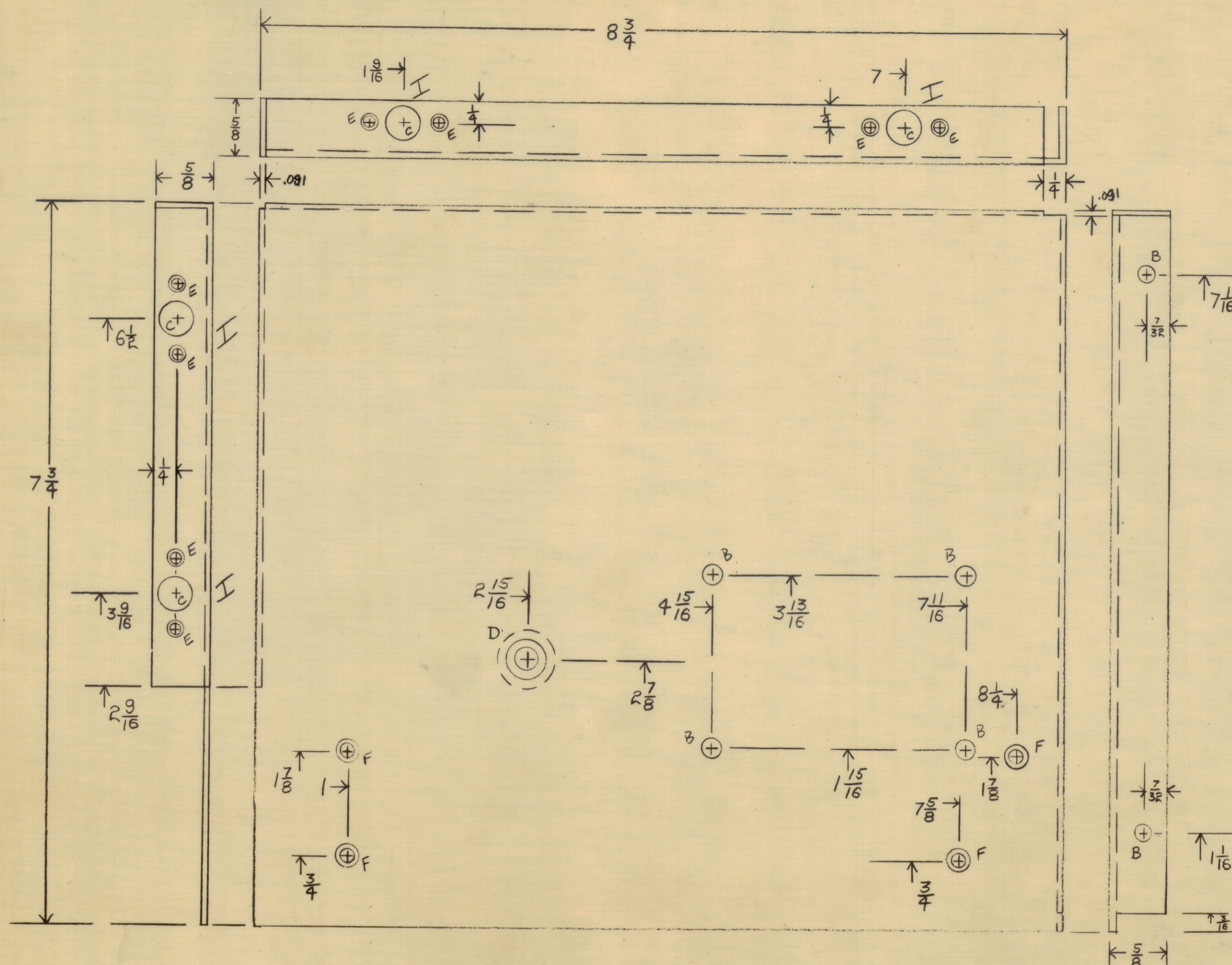


REVISIONS						
ZONE	SYM	DESCRIPTION	DATE	E.M.N. NO.	DRAFT	CHKD
	Ø	ORIGINAL RELEASE FOR PRODUCTION	7/10/69	Ø	Ø	

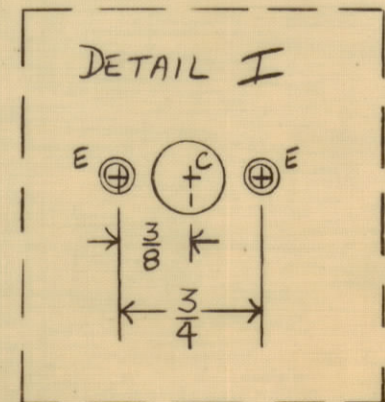


KEY	DESCRIPTION	QTY.
A		
B	7/32" HOLE	6
C	3/8" HOLE	4
D	.411-.413	1
E	4-40 CKS	8
F	8-32 CKS	4

NOTE

D- 5/16"-24 NUT-STEEL-NICKEL FINISH.
INSERT BEFORE IRIDITING PLATE
TO BE SUPPLIED BY

MATERIAL: .091 ALUMINUM 5052-H32
FINISH: #14 IRIDITE



LEFT SIDE PLATE SHOWN — MS 4348-1

RIGHT SIDE PLATE — MS 4348-2

PUNCHING DETAIL IDENTICAL
TO LEFT SIDE.
BENDS REVERSED
C'SNKS ON OPPOSITE SIDE
PEM NUTS- INSERTED ON OPPOSITE SIDE.

REQ'D.	ITEM	PART NUMBER	DESCRIPTION	SYMBOL
LIST OF MATERIAL				
MATERIAL		THE TECHNICAL MATERIEL CORP. MAMARONECK, NEW YORK		
FINISH		TITLE PLATE, SIDE, LEFT & RT.		
UNLESS OTHERWISE SPECIFIED DIMENSIONS ARE IN INCHES AND INCLUDE CHEMICALLY APPLIED OR PLATED FINISHES		DRAWN	DATE	FINAL APPROVAL
		CHECKED	DATE	DATE
		ELECT. DES.	DATE	DATE
		MECH. DES.	DATE	DATE
		SHEET		REV. LTR.

FSA		
Q'TY./UNIT	MODEL USED ON	ASS'Y. NO.
	CODE	5401- (B10510a)

THE CONTENTS OF THIS DRAWING ARE THE EXCLUSIVE PROPERTY
OF THE TECHNICAL MATERIEL CORP. ITS UNAUTHORIZED USE OR
REPRODUCTION IN WHOLE OR IN PART IS STRICTLY FORBIDDEN.

NOTES

MS 4348