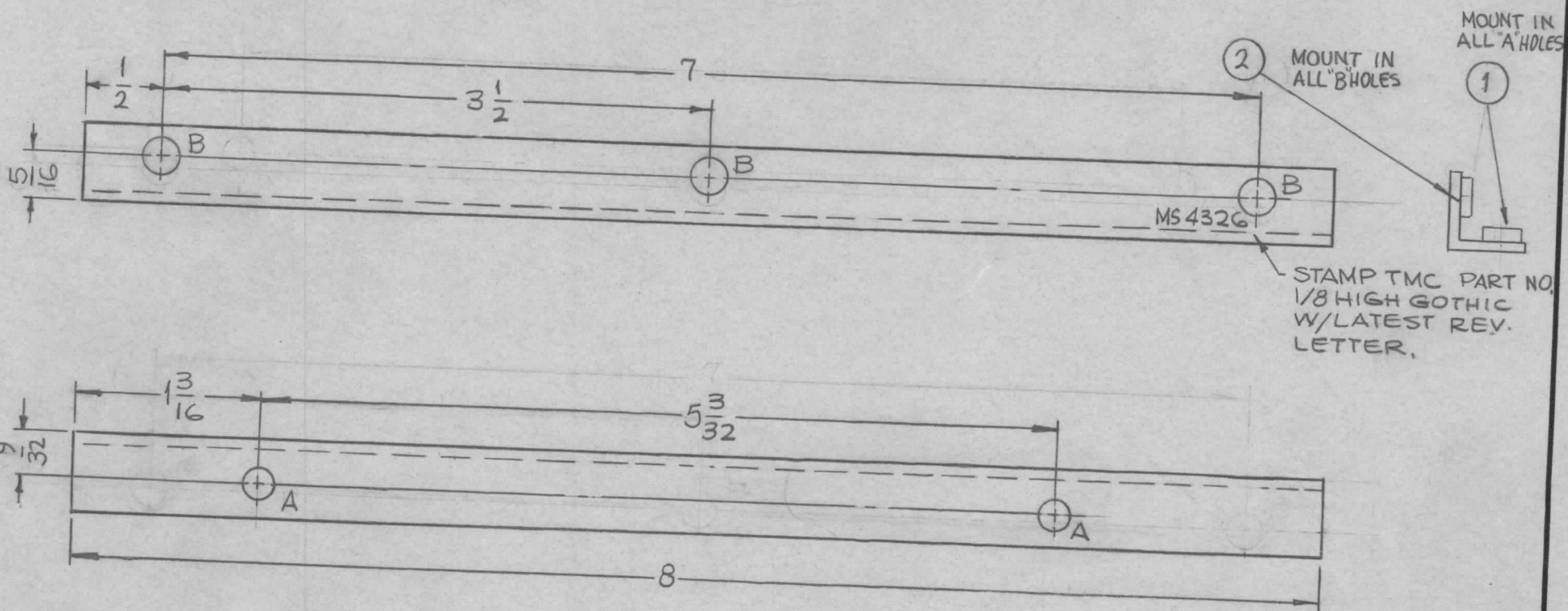


REQ. PER UNIT	USED ON			MS4326	Ø
	MODEL	ASS'Y. NO.	DATE		
1	RFTA-1		12-8-64		



HOLES
 A-.191-.194 DIA. (3REQ.)
 B-.221-.224 DIA. (3REQ.)

Ø	ORIGINAL RELEASE FOR PRODUCTION	5/19/66	Ø	CV						3	2	NT129-832-4	NUT, PLAIN, SPLINE	B
X ₁	5/16 WAS 7/32	12-18-64	x ₁	SRG						3	1	NT129-632-4	NUT, PLAIN, SPLINE	A
X	EXP. RELEASE	12-8-64	X	SRG						REQ. ITEM		PART NO.	F. BUDETTI	DESCRIPTION
SYM	DESCRIPTION	DATE	CH. NO.	DRAFTS	CHECKER	ENG. APP.						1/2 X 1/2 X .081		SYMBOL
UNLESS OTHERWISE SPECIFIED DIMENSIONS ARE IN INCHES AND INCLUDE CHEMICALLY APPLIED OR PLATED FINISHES										THE TECHNICAL MATERIEL CORP. MAMARONECK, NEW YORK				
TOLERANCES										BRACKET, ANGLE				
SCALE 1:1										ALUMINUM				
DECIMALS .X ± .05 .XX ± .01 .XXX ± .005										5052-H32				
FRACTIONS ± 1/64 ANGLES ± 0° 30'										TYPE & TEMPER S404 YELLOW IRIDITE				
CODE A										HEAT TREAT. SPEC.				
										FINISH & SPEC. NO.				
										DRAWN SRG				
										CHECKED JCB				
										FINAL APPROVAL				
										ELEC. DES. APP. MECH. DES. APP.				
										MS4326 Ø				