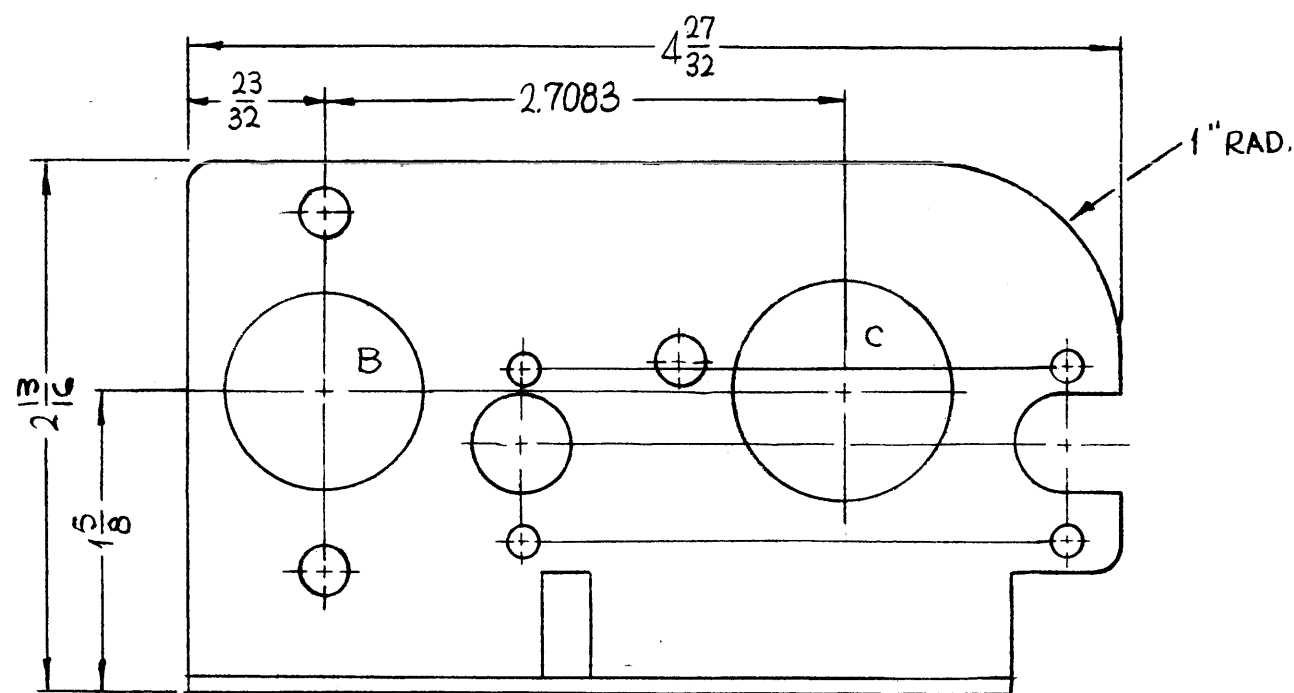


MARK TMC
PART NO. 1/8 HIGH
GOTHIC W/LATEST
REV. LETTER.



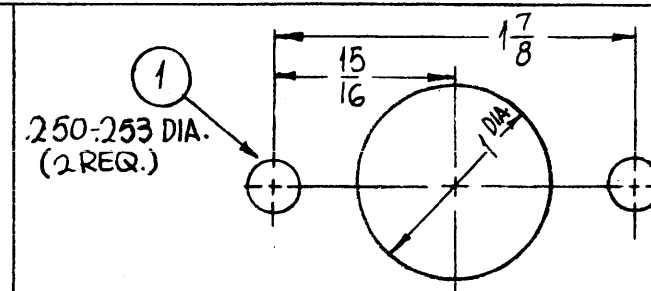
MS4319

REVISIONS

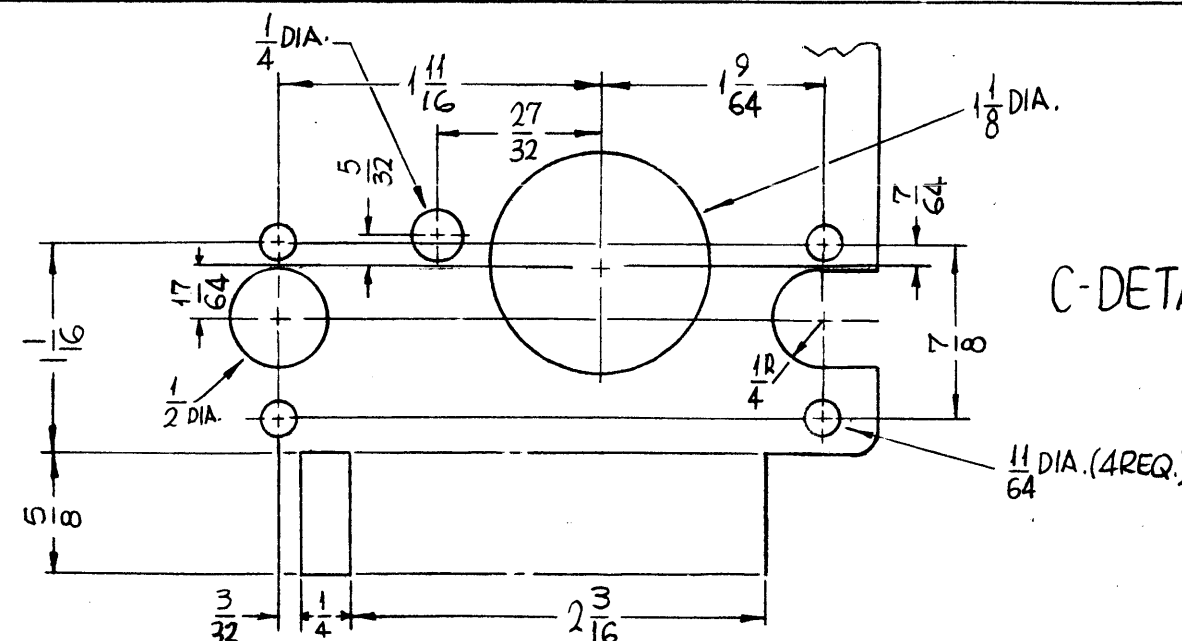
SYM	DESCRIPTION	DATE	E.M.N. NO.	DRAFT	CHKD	APPD
X	EXPERIMENTAL RELEASE	12-2-64	X	SRG		
X ₁	NT REMOVED FROM A HOLES DIM. 11/32 WAS 1/2, 4.9/32 WAS 4 7/16, 23/32 WAS 7/8, 4.27/32 WAS 5	12-16-64	X ₁	SRG		
X ₂	2 NT ADDED TO B DETAIL, 1" RAD. ADDED	1-12-65	X ₂	SRG		
X ₃	1/4 WAS 11/32, SLOTS WERE 13/64 D., 2 13/16 WAS 2 3/4, 1 5/8 WAS 1 9/16	6-9-65	X ₃	SRG		
Ø	ORIGINAL RELEASE FOR PRODUCTION	6-23-66	-#	WHO		

HOLES

A- 3/16 X 3/8 SLOTS (3 REQ.)



B-DETAIL



C-DETAIL

REQ'D.	ITEM	PART NUMBER	DESCRIPTION	SYMBOL
2	1	NT 129-1032-4	NUT, PLAIN, SPLINE	B

F. BUDETTI LIST OF MATERIAL

MATERIAL	THE TECHNICAL MATERIEL CORP.
.081 THICK ALUMINUM 5052-H32	MAMARONECK, NEW YORK
FINISH	TITLE
S404 YELLOW IRIDITE	BRACKET, MOTOR, SWITCH MTG.

UNLESS OTHERWISE SPECIFIED DIMENSIONS ARE IN INCHES AND INCLUDE CHEMICALLY APPLIED OR PLATED FINISHES	DRAWN SRG	DATE 12-2-64	FINAL APPROVAL <i>[Signature]</i>	DATE 6/20/66
DECIMALS .X ± .05 .XX ± .01 .XXX ± .005	CHECKED <i>[Signature]</i>	DATE 6/23/66	MS4319	Ø
FRACTIONS ± 1/64 ANGLES ± 0° 30'	ELECT. DES. <i>[Signature]</i>	DATE		
TOLERANCES	MECH. DES. <i>[Signature]</i>	DATE		

UNLESS OTHERWISE SPECIFIED:

- USE MATERIAL THICKNESS FOR MAXIMUM RADIUS ON ALL BENDS
- ALL ANGULAR BENDS 90 DEGREES
- REMOVE ALL BURRS AND SHARP EDGES
- MOUNT INSERTS AFTER FINISHING

NOTES

1	RFTA-1	
QTY./UNIT	MODEL USED ON	ASS'Y. NO.
SCALE 1:1	CODE A	
THE CONTENTS OF THIS DRAWING ARE THE EXCLUSIVE PROPERTY OF THE TECHNICAL MATERIEL CORP. ITS UNAUTHORIZED USE OR REPRODUCTION IN WHOLE OR IN PART IS STRICTLY FORBIDDEN.		

REF: LD 1768.