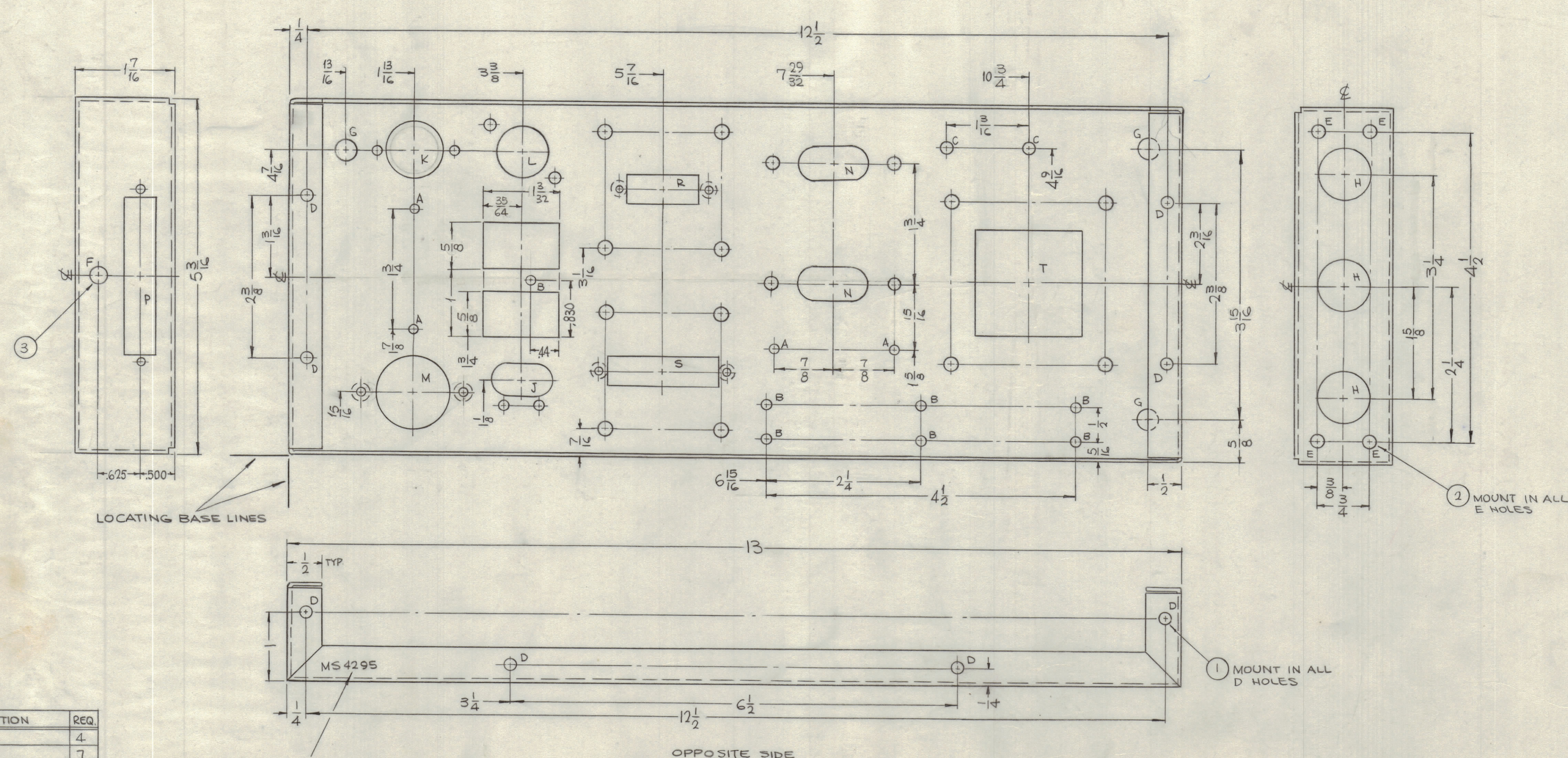


REVISIONS						
ZONE	SYM	DESCRIPTION	DATE	E.M.N. NO.	DRAFT	CHKD
X1		ON K DETAIL 13/16 WAS 11/16, ON M 1 1/8 WAS 1 1/16 - 1 1/2 WAS 1 5/16 ON N DETAIL 1-15/16 WAS 1-25/32, 7/8 DIM WAS 1-3/4 DIM. 1.094 WAS 1-1/8, GSC WAS 11/16, ASS' NOS ADDED	4-20-65	X1	SRG	LA
X2		2 # 1 B HOLES ADDED, CUTOUTS WERE .656 X 1.094	5-12-65	X2	SRG	
X3		ORIGINAL RELEASE FOR PRODUCTION	5-19-67			CV

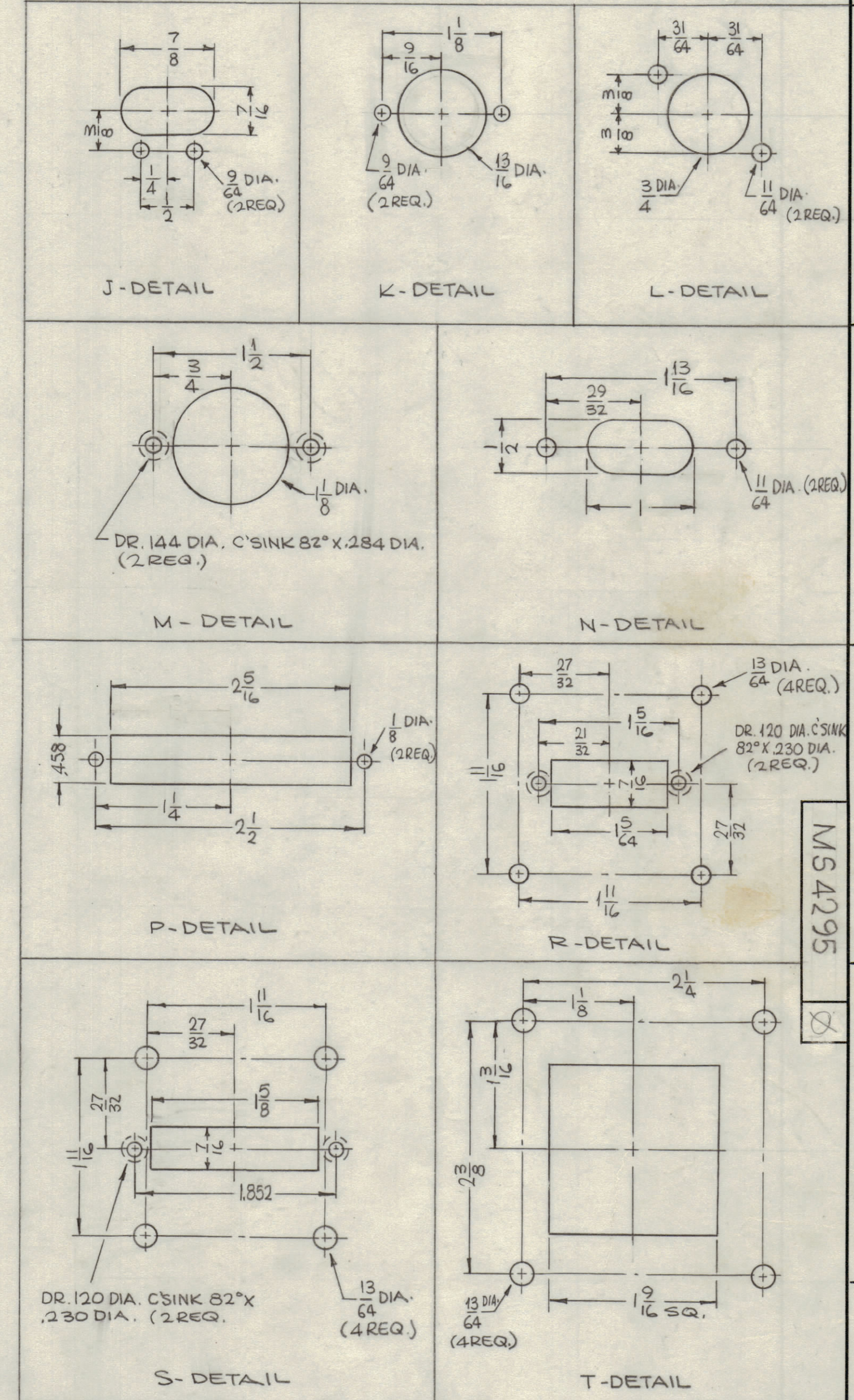


HOLES	DESCRIPTION	REQ.
A	1/8 DIA.	4
B	9/64 DIA.	7
C	11/64 DIA.	2
D	1/64 - 1/64 DIA.	12
E	.191 - .194 DIA.	4
F	.250 - .253 DIA.	1
G	5/16 DIA.	3
H	3/4 DIA.	3
J	SEE DETAIL	1
K		
L		
M		
N		
P		
R		
S		
T	SEE DETAIL	1

METAL STAMP TMC PART NO. MS4295
1/8 HIGH GOTHIC W/LATEST REV. LETTER.

OPPOSITE SIDE SAME

- UNLESS OTHERWISE SPECIFIED:
1. USE MATERIAL THICKNESS FOR MAXIMUM RADIUS ON ALL BENDS
 2. ALL ANGULAR BENDS 90 DEGREES
 3. REMOVE ALL BURRS AND SHARP EDGES
 4. MOUNT INSERTS AFTER FINISHING
 5. MOUNT ALL NT'S INSIDE OF CHASSIS.



REQ'D.	ITEM	PART NUMBER	DESCRIPTION	SYMBOL
1	3	NT129-1032-4	NUT, PLAIN, SPLINE	F
4	2	NT129-632-4	NUT, PLAIN, SPLINE	E
12	1	NT129-440-4	NUT, PLAIN, SPLINE	D

MATERIAL		LIST OF MATERIAL	
1	TSTE 10K	AZ-109	
1	TSTE 10K	AZ-107	
1	TSTE 10K	AZ-105	
.064 THICK ALUMINUM 5052-H32		THE TECHNICAL MATERIEL CORP. MAMARONECK, NEW YORK	
S404 YEL. IRIDITE		TITLE: CHASSIS, SERVO MODULE	
SCALE: 1:1	CODE: A	ASSY. NO.	
UNLESS OTHERWISE SPECIFIED DIMENSIONS ARE IN INCHES AND INCLUDE CHEMICALLY APPLIED OR PLATED FINISHES		DRAWN: SRG	DATE: 3-22-63
DECIMALS: .X ± .05	FRACTIONS: ± 1/64	CHECKED:	DATE:
.XX ± .01	ANGLES: ± 0° 30'	ELECT. DES.:	DATE:
.XXX ± .005		MECH. DES.:	DATE:
THE CONTENTS OF THIS DRAWING ARE THE EXCLUSIVE PROPERTY OF THE TECHNICAL MATERIEL CORP. ITS UNAUTHORIZED USE OR REPRODUCTION IN WHOLE OR IN PART IS STRICTLY FORBIDDEN.		DATE: MS 4295	
		REV. LTR.	

NOTES