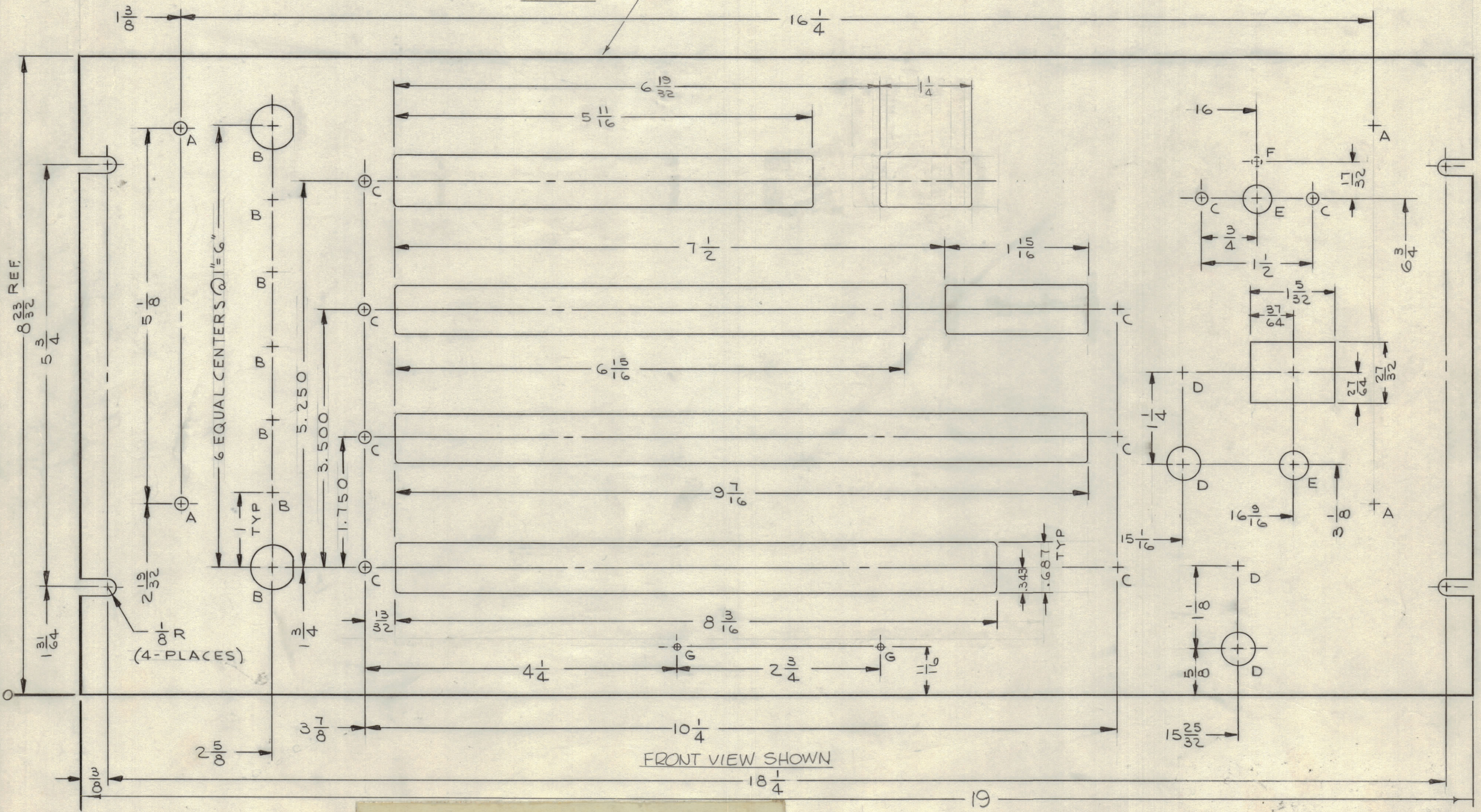


REVISIONS						
ZONE	SYM	DESCRIPTION	DATE	E.M.N. NO.	DRAFT	CHKD APPD
	X	EXP. RELEASE	1/6/65	X	JL	
F2	X1	ON (2) "C" & (1) "E" HOLE, LOCATING DIM 6-3/4 ADDED	1-19-65	X1	<i>[Signature]</i>	W.J.
	X2	TMC P/N WAS MS 4053	1-19-65	X2	<i>[Signature]</i>	W.J.
G3,4	X3	ON TOP, DIM 6-19/32 WAS 6-11/16 ON CUTOUT, DIM 1-1/4 WAS 1-1/16	3-24-65	X3	<i>[Signature]</i>	W.J.
	Ø	ORIGINAL RELEASE FOR PRODUCTION	5/24/65	-AA	<i>[Signature]</i>	

METAL STAMP TMC PT. NO. 1/8 HIGH GOTHIC
W/LATEST REV. LETTER ON REAR.



MS42530

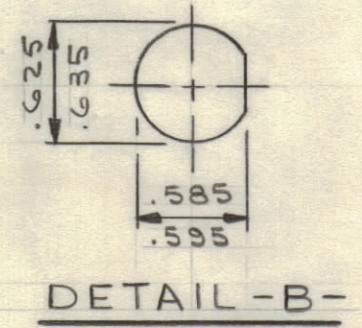
HOLE LEGEND		
HOLE	DESCRIPTION	REQD
A	13/64 DIA	4
B	SEE DETAIL	7
C	3/16 DIA	9
D	15/32 DIA	4
E	13/32 DIA	2
F	5/32 DIA. X 1/80P. ON REAR	1
G	NO. 48 (.0760) DR	2

MACHINING:

- MILL ALL EDGES.
- HOLES MUST BE DRILLED, UNLESS OTHERWISE SPECIFIED.
- LATERAL BOW OF PANEL MUST BE KEPT TO .031 TOLERANCE.
- PANEL MUST BE FREE OF ALL MACHINING MARKS, GOUGES AND SCRATCHES. IF NECESSARY, SAND FRONT OF PANEL WITH NO. 120 GRIT SANDPAPER.

FINISH NOTES:

- S404 - IRIDITE 14-2 AL-COAT.
- S114 - ZINC CHROMATE PRIMER) FRONT AND
- S115 - SMOOTH GRAY ENAMEL) EDGES ONLY



REF.: LD 1720

REQ'D.	ITEM	PART NUMBER	DESCRIPTION	SYMBOL
F.E. EATON LIST OF MATERIAL				
MATERIAL		THE TECHNICAL MATERIEL CORP.		
3/16 THK ALUMINUM		MAMARONECK, NEW YORK		
2024-T3		TITLE		
FINISH		PANEL, FRONT		
SEE NOTES		DRAWN J. LESHINSKI		
		DATE 1/6/65		
		CHECKED <i>[Signature]</i>		
		DATE 5/24/65		
		ELECT. DES. DATE		
		MECH. DES. W. JORDAN		
		DATE 5/25/65		
		SHEET		
		REV. LTR.		

1		RTPE-1		ASS'Y. NO.	
Q'TY./UNIT	MODEL USED ON	SCALE	CODE	DATE	DATE
1		1:1	A		

THE CONTENTS OF THIS DRAWING ARE THE EXCLUSIVE PROPERTY OF THE TECHNICAL MATERIEL CORP. ITS UNAUTHORIZED USE OR REPRODUCTION IN WHOLE OR IN PART IS STRICTLY FORBIDDEN.

NOTES