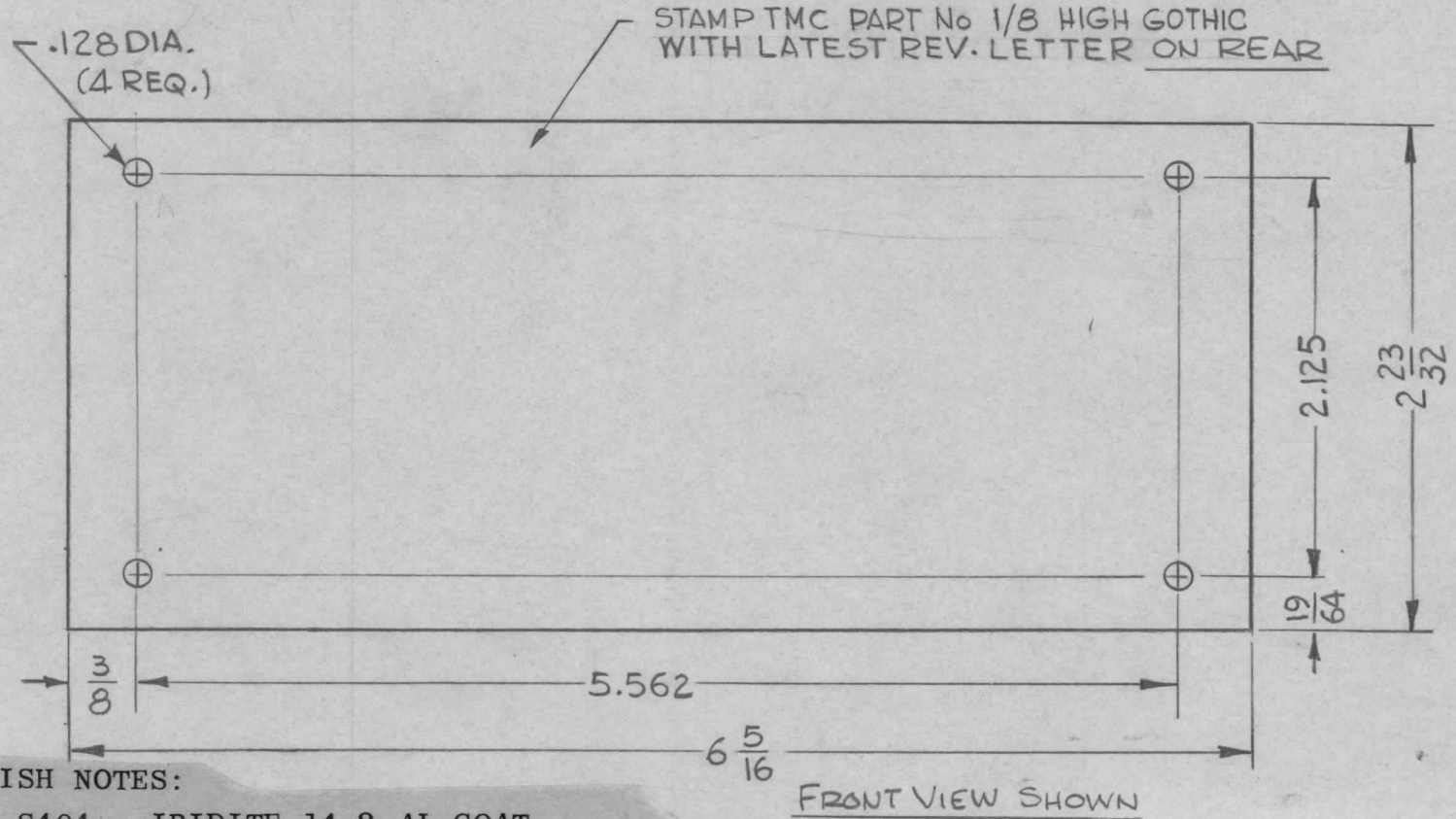


REQ. PER UNIT	USED ON			MS 4246 Ø
	MODEL	ASS'Y. NO.	DATE	
1	LFCA-1		1-6-65	



**FINISH NOTES:**

- S404 - IRIDITE 14-2 AL-COAT.
- S114 - ZINC CHROMATE PRIMER } FRONT AND
- S115 - SMOOTH GRAY ENAMEL } EDGES ONLY

OR  
PRIME AND PAINT PER CUSTOMER'S SPECIFICATIONS.

REQ.	ITEM	PART NO.	O. POSE			DESCRIPTION	SYMBOL
Ø	ORIGINAL RELEASE FOR PRODUCTION	7-12-66	Ø	HLA		.018 THK STOCK SIZE ELEC. SILICON STEEL MATERIAL THE TECHNICAL MATERIEL CORP. MAMARONECK. NEW YORK SHIELD, ELECTRO MAGNETIC	Ø
X1	FINISH NOTES ADDED, METAL STAMP PUT ON REAR	9/14/65	-M	JC			
X	EXPER. RELEASE	1-6-65		G.D.L			
SYM	DESCRIPTION	DATE	CH. NO.	DRAFTS	CHECKER		
UNLESS OTHERWISE SPECIFIED DIMENSIONS ARE IN INCHES AND INCLUDE CHEMICALLY APPLIED OR PLATED FINISHES		SCALE		1:1			
DECIMALS .X ± .05 .XX ± .01 .XXX ± .005		FRACTIONS ± 1/64 ANGLES ± 0° 30'		TOLERANCES		CODE A	
SEE NOTES		TYPE & TEMPER		HEAT TREAT. SPEC.		DRAWN G.D.L 1-6-65	
FINISH & SPEC. NO.		ELEC. DES. APP.		MECH. DES. APP.		MS4246 Ø	