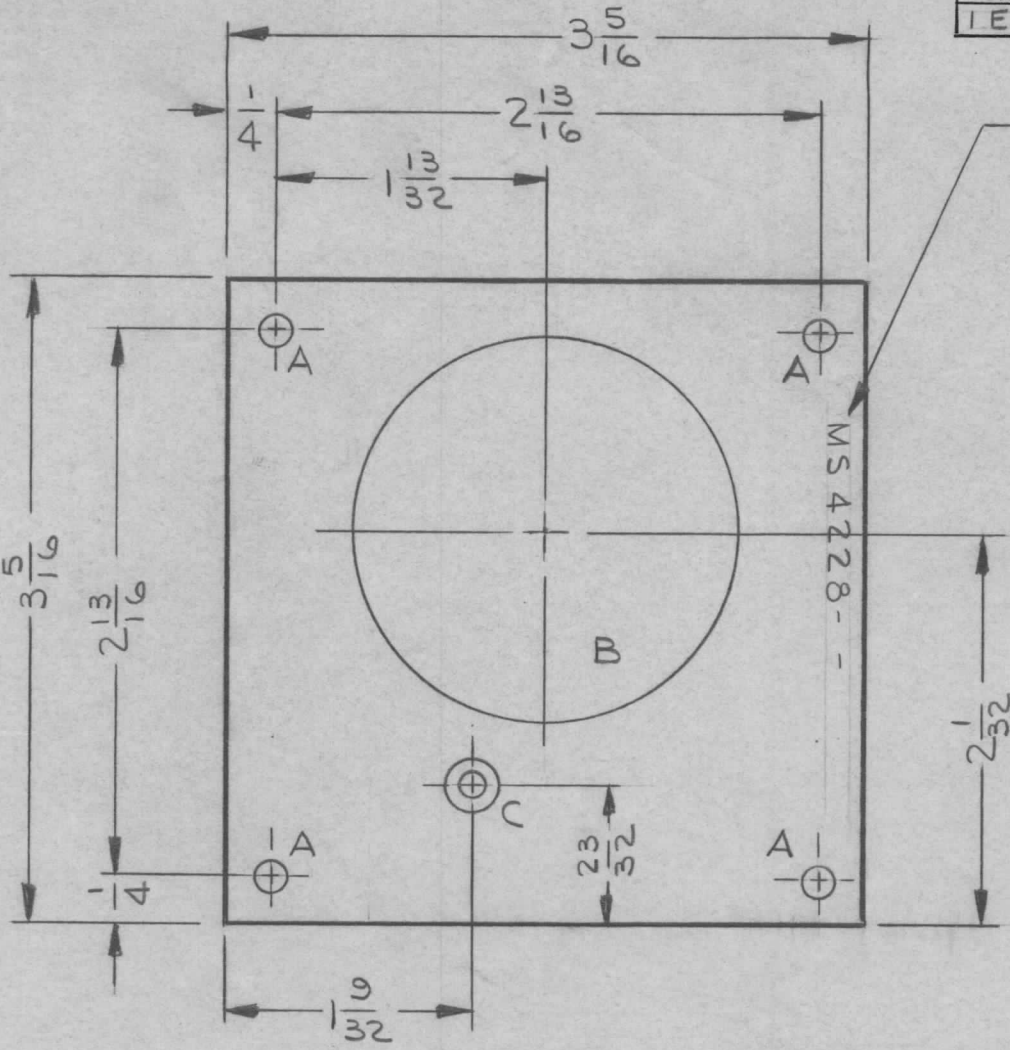


REQ. PER UNIT	USED ON		MS4228	Ø
	MODEL	ASS'Y. NO.		
1 EA.	GPT-10KLF		2-26-65	



MARK TMC PART NO. 1/8  
HIGH GOTHIC W/LATEST REV. LETTER

HOLE LEGEND		
HOLE	DESCRIPTION	REQ'D
A	3/16 DIA	4
B	2" DIA	1
C	.144 DIA & C'SINK 82° X .284 DIA (ON -1 ONLY, REMOVE FOR -2)	1

MS4228 - AS SHOWN (REF. LD1704)  
MS4228-2 - AS SHOWN EXCEPT FOR LEFT  
WIRE REMOVAL OF "C" HOLE.  
(REF. LD2056)

REF.: LD1704, LD2056

SYM	DESCRIPTION	DATE	CH. NO.	DRAFTS	CHECKER	ENG. APP.	REQ. ITEM	PART NO.	BUDETTI	DESCRIPTION	SYMBOL	
Ø	ORIGINAL RELEASE FOR PRODUCTION	2-18-66	-A-	JC			.064 THK			THE TECHNICAL MATERIEL CORP. MAMARONECK, NEW YORK PLATE, PICK UP LOOP, SWR COUPLER	Ø	
XI	MS4228-1 & MS4228-2 WAS PT. 1 & PT. 2.	6-24-65	-A-	JC			STOCK SIZE					
X	EXP. RELEASE	2/26/65		JL			ALUMINUM					
							MATERIAL					
UNLESS OTHERWISE SPECIFIED DIMENSIONS ARE IN INCHES AND INCLUDE CHEMICALLY APPLIED OR PLATED FINISHES		SCALE	1/1				5052-H32		J. LESHINSKI			
DECIMALS .X ± .05 .XX ± .01 .XXX ± .005	TOLERANCES	FRACTIONS ± 1/64 ANGLES ± 0° 30'	CODE				YELLOW IRIDITE PER S404					
							FINISH & SPEC. NO.		ELEC. DES. APP.	MECH. DES. APP.	MS4228	Ø