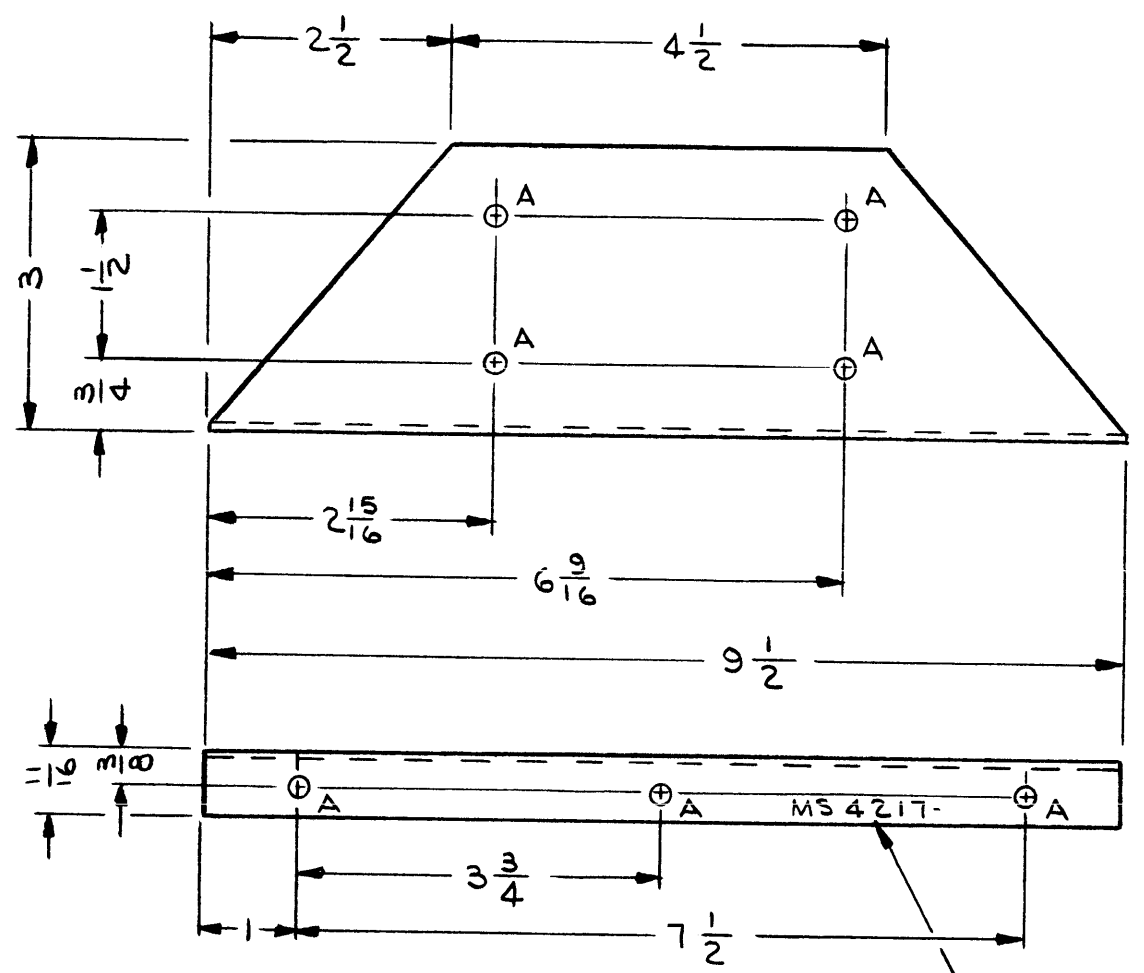


MS4217

REVISIONS

SYM	DESCRIPTION	DATE	E.M.N. NO.	DRAFT	CHKD	APPD
X	EXP. RELEASE	2/4/65		JL		
Ø	ORIGINAL RELEASE FOR PRODUCTION	12/21/65	Ø			JL



HOLE LEGEND		
HOLE	DESCRIPTION	REQ'D
A	3/16 DIA	7

METAL STAMP 1/8 HIGH GOTHIC
TMC PT. NO. W/LATEST REV. LETTER

UNLESS OTHERWISE SPECIFIED:

1. USE MATERIAL THICKNESS FOR MAXIMUM RADIUS ON ALL BENDS
2. ALL ANGULAR BENDS 90 DEGREES
3. REMOVE ALL BURRS AND SHARP EDGES
4. MOUNT INSERTS AFTER FINISHING

NOTES

1	GPT-10KLF	
Q'TY./UNIT	MODEL USED ON	ASS'Y. NO.
SCALE 1/2	CODE	
THE CONTENTS OF THIS DRAWING ARE THE EXCLUSIVE PROPERTY OF THE TECHNICAL MATERIEL CORP. ITS UNAUTHORIZED USE OR REPRODUCTION IN WHOLE OR IN PART IS STRICTLY FORBIDDEN.		

REQ'D.	ITEM	PART NUMBER	DESCRIPTION	SYMBOL
LIST OF MATERIAL				
MATERIAL		THE TECHNICAL MATERIEL CORP. MAMARONECK, NEW YORK		
.064 THK ALUMINUM 5052-H32		TITLE PLATE, SIDE, LEFT-ZENER BD		
FINISH		DRAWN		
YELLOW IRIDITE PER TMC SPEC S404		J. LESHINSKI		DATE
UNLESS OTHERWISE SPECIFIED		DATE		FINAL APP'D
DIMENSIONS ARE IN INCHES AND INCLUDE		6-24-65		DATE
CHEMICALLY APPLIED OR PLATED FINISHES		DATE		MS4217
DECIMALS		ELECT. DES.		REV. LTR.
.X ± .05		DATE		
.XX ± .01		MECH. DES.		
.XXX ± .005		DATE		
TOLERANCES		MIL		
FRACTIONS		12-22-65		
± 1/64		SHEET		
ANGLES		REV. LTR.		
± 0° 30'				