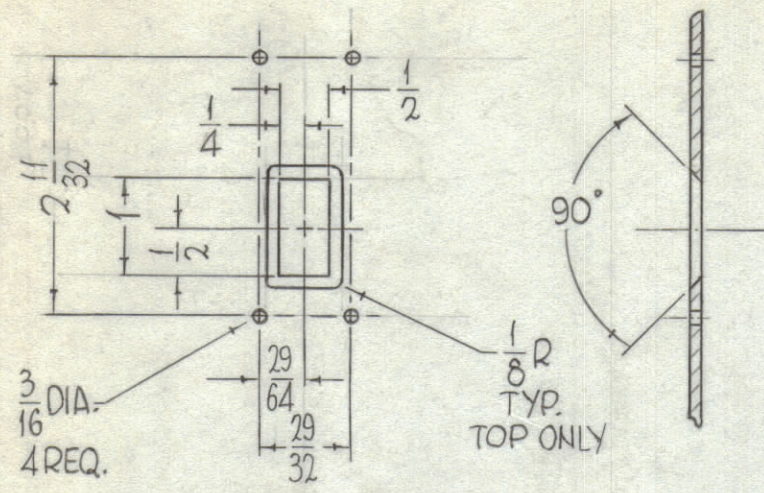
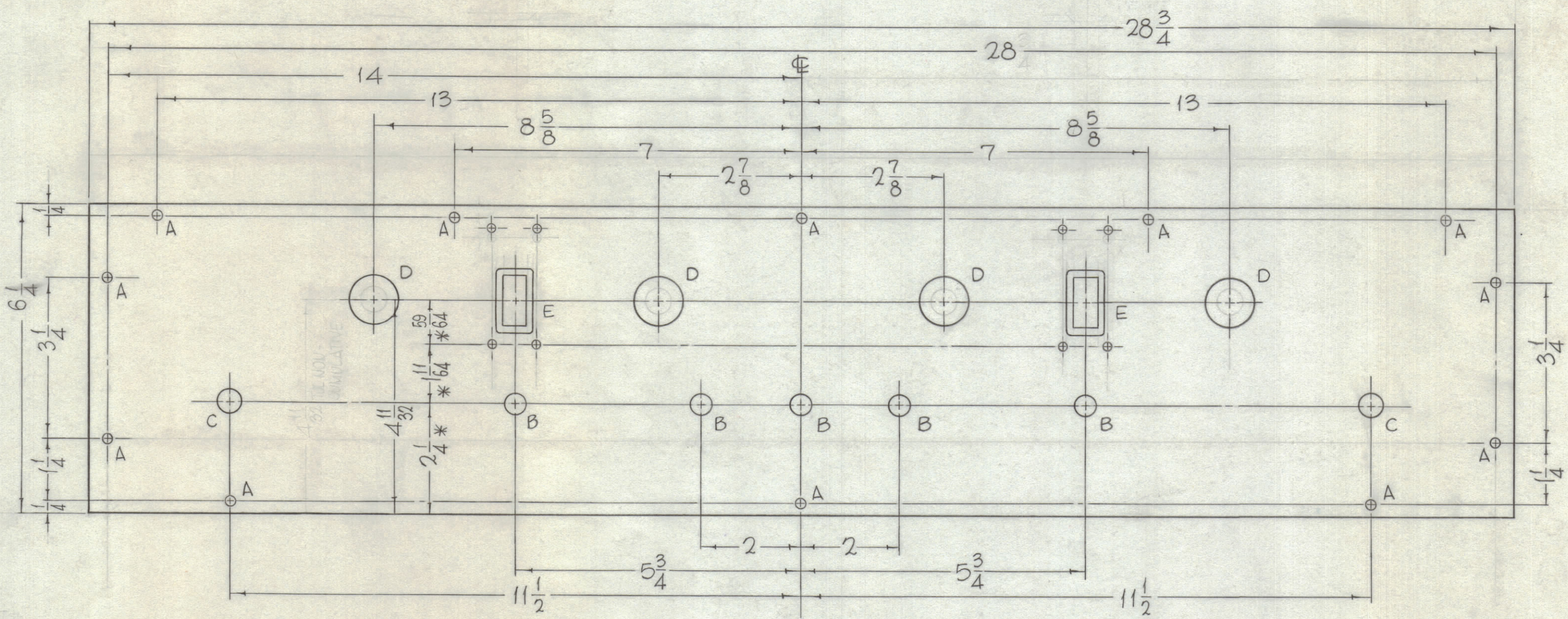


| HOLES | REQ. |
|----------------|------|
| A - 15/64 DIA. | 12 |
| B - 25/64 DIA. | 5 |
| C - 1/2 DIA. | 2 |
| D - 1" DIA. | 4 |
| E - SEE DETAIL | 2 |



"E" DETAIL 2 REQ.

| REVISIONS | | | | | | | |
|-----------|-----|---------------------------------|----------|------------|-------|------|------|
| ZONE | SYM | DESCRIPTION | DATE | E.M.N. NO. | DRAFT | CHKD | APPD |
| X | | EXPERIMENTAL RELEASE | 2.5.65 | X | JSP | | |
| Ø | | ORIGINAL RELEASE FOR PRODUCTION | 12/20/65 | Ø | | | JLW |



FRONT VIEW SHOWN

METAL STAMP TMC PART NO. MS4205 - 1/8 HIGH GOTHIC, WITH LATEST REVISION LETTER, ON REAR.

MS4205 Ø

REF - TMC DWG. LD1686

* TOLERANCE NON-CUMULATIVE ON THESE DIMENSIONS.

MACHINING:

- MILL ALL EDGES.
- HOLES MUST BE DRILLED, UNLESS OTHERWISE SPECIFIED.
- LATERAL BOW OF PANEL MUST BE KEPT TO .031 TOLERANCE.
- PANEL MUST BE FREE OF ALL MACHINING MARKS, GOUGES AND SCRATCHES. IF NECESSARY, SAND FRONT OF PANEL WITH NO. 120 GRIT SANDPAPER.

FINISH NOTES:

- S404 - IRIDITE 14-2 AL-COAT.
- S114 - ZINC CHROMATE PRIMER) FRONT AND
- S115 - SMOOTH GRAY ENAMEL) EDGES ONLY

NOTES

THE CONTENTS OF THIS DRAWING ARE THE EXCLUSIVE PROPERTY OF THE TECHNICAL MATERIEL CORP. ITS UNAUTHORIZED USE OR REPRODUCTION IN WHOLE OR IN PART IS STRICTLY FORBIDDEN.

| REQ'D. | ITEM | PART NUMBER | DESCRIPTION | SYMBOL |
|--|------|---------------|---|--------|
| LIST OF MATERIAL | | | | |
| MATERIAL 1/8 THICK, ALUMINUM, 5052 - H32 | | | THE TECHNICAL MATERIEL CORP. MAMARONECK, NEW YORK | |
| FINISH SEE NOTES | | | TITLE PANEL, FRONT | |
| DRAWN John C Biele | | DATE 1-14-65 | FINAL APPROVAL | |
| CHECKED JCB | | DATE 6-24-65 | DATE 12/20/65 | |
| ELECT. DES. | | DATE | MS4205 Ø | |
| MECH. DES. | | DATE | SHEET | |
| | | DATE 12/20/65 | REV. LTR. | |