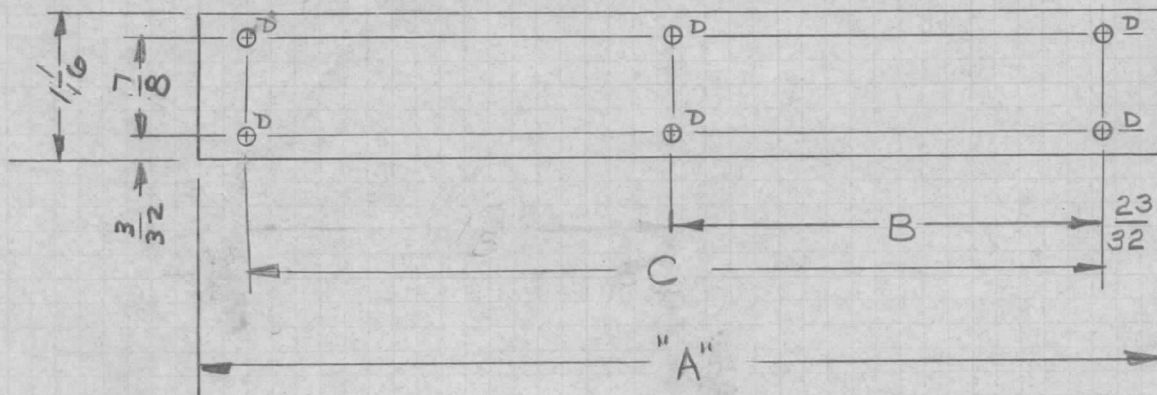


| TMC PART NO. | DIM. "A" | DIM. "B" | USED ON | C | D | | REQ. PER UNIT | USED ON | | | |
|--------------|----------|----------|----------|-------|------|------|---------------|---------|------------|------|-----------|
| | | | | | SIZE | QTY. | | MODEL | ASS'Y. NO. | DATE | |
| MS4101-1 | 5-1/16 | 1 7/8 | RTRS-1 | 3 3/4 | 3/32 | 6 | 1 | RTRS-1 | | | MS 4101 B |
| MS4101-2 | 5-11/16 | 1 7/8 | RTRS-1B | 3 3/4 | 3/32 | 6 | | | | | |
| MS4101-3 | 4-1/2 | 1 7/8 | RTRS-209 | — | 3/32 | 4 | | | | | |
| MS4101-4 | 3-7/8 | 1 7/8 | RTRS-216 | — | 3/32 | 4 | | | | | |
| MS4101-5 | 2-5/8 | 1 7/8 | RTRS-236 | — | 3/32 | 4 | | | | | |



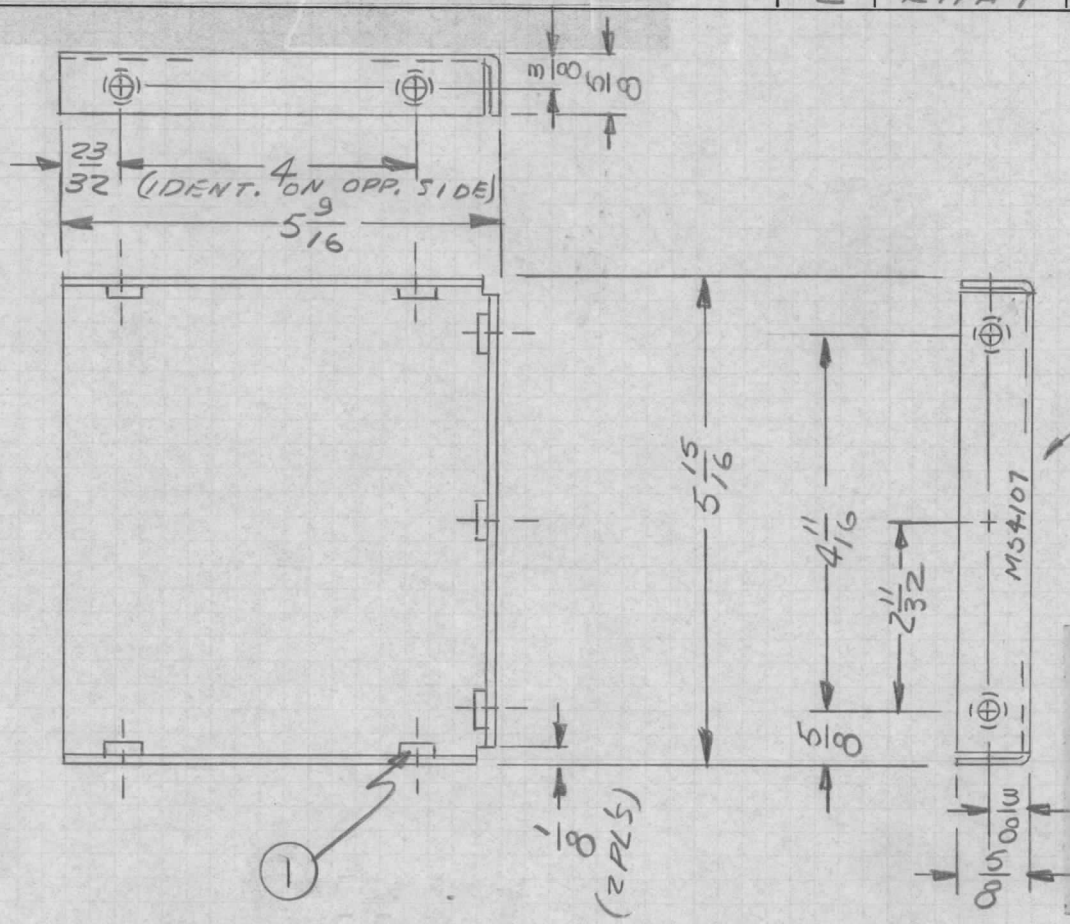
METAL STAMP TMC PART NO. 1/8 HIGH GOTHIC ON REAR WITH LATEST REVISION LETTER.

FINISH NOTES:

1. S404 - IRIDITE 14-2 AL-COAT.
2. S114 - ZINC CHROMATE PRIMER) FRONT AND
3. S115 - SMOOTH GRAY ENAMEL) EDGES ONLY

| SYM | DESCRIPTION | DATE | CH. NO. | DRAFTS | CHECKER | ENG. APP. | REQ. ITEM | PART NO. | DESCRIPTION | SK-3011-MS-1 | SYMBOL | |
|----------------|---|----------|---------|--------|---------|-----------|-----------|--------------------|--|-----------------|-----------|----------------|
| B | 3 4/8, 1 7/8, RTRS-209, 3/32, 4 COL. CHD, 3 3/8, 1 7/8, RTRS-216, 3/32, 4 ADD | 7-7-65 | 14402 | JL | JCB | JCB | | | | | | |
| A | P/N CHART ADD; ON PICT'S LETTERS WERE DIM; METAL STAMP NOTE ADD. | 2-3-65 | 13412 | JL | JCB | | | .031 THK | THE TECHNICAL MATERIEL CORP. MAMARONECK, NEW YORK | | | |
| Ø | ORIGINAL RELEASE FOR PRODUCTION | 1-12-65 | Ø | JL | | | | STOCK SIZE | COVER, CUTOUT, SWITCH | | | |
| X ₁ | 1 1/16 DIM WAS 1; 7/8 WAS 3/16; 19/32 WAS 5/8; 5/16 | 11/25/64 | | JL | | W.S. | | ALUMINUM | (FRONT PANEL) | | | |
| | | | | | | | | MATERIAL | | | | |
| | | | | | | | | 5052-H32 | JL | @ | JCB | |
| | | | | | | | | TYPE & TEMPER | HEAT TREAT. SPEC. | DRAWN | CHECKED | FINAL APPROVAL |
| | | | | | | | | SEE NOTES | J. E. Eaton | W. JORDAN | | |
| | | | | | | | | FINISH & SPEC. NO. | ELEC. DES. APP. | MECH. DES. APP. | MS 4101 B | |

| | | | | |
|---------------|---------|------------|---------|--------------------|
| REQ. PER UNIT | USED ON | | | MS4107 \emptyset |
| | MODEL | ASS'Y. NO. | DATE | |
| 2 | RTPA-1 | A4050 | 11-4-64 | |



ALL HOLES
.221-.224 DIA. - 7 REQ.

METAL STAMP TMC P/N.
W/LATEST REVISION LETTER,
1/8 GOTHIC.

UNLESS OTHERWISE SPECIFIED:

1. USE MATERIAL THICKNESS FOR MAXIMUM RADIUS ON ALL BENDS
2. ALL ANGULAR BENDS 90 DEGREES
3. REMOVE ALL BURRS AND SHARP EDGES
4. MOUNT INSERTS AFTER FINISHING

MOUNT IN ALL
"A" HOLES

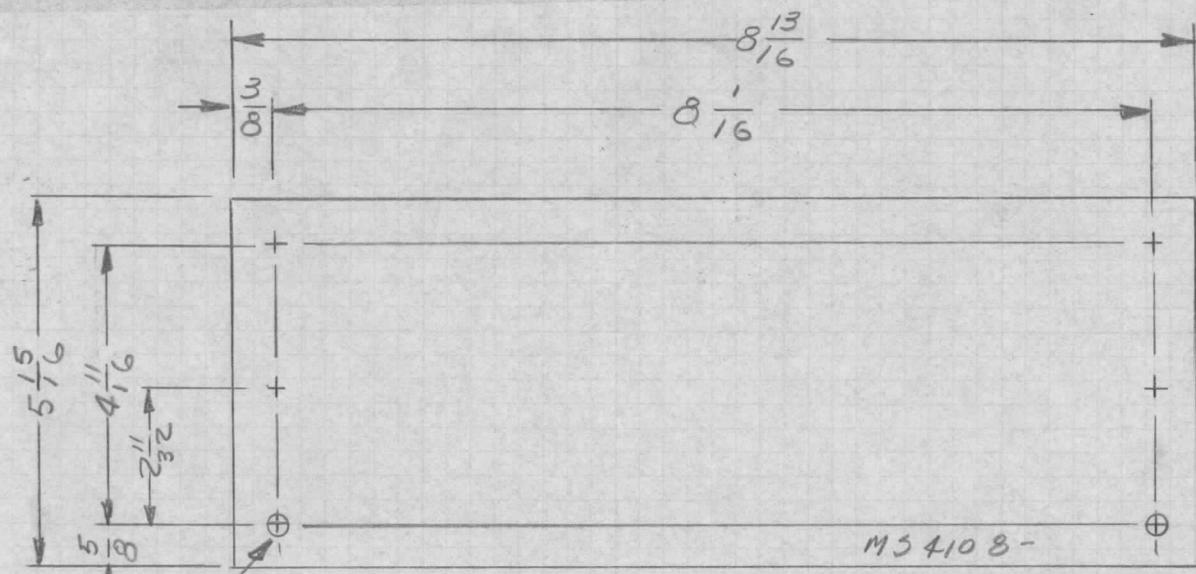
| | | | | | | | | | | |
|--|--|--|--|--|--|-----------|---|--------------------|--|--------------------------|
| | | | | | | 7 | 1 | NT129-832-4 | NUT, PLAIN, SPLINE | |
| | | | | | | REQ. ITEM | | PART NO. | EATON | DESCRIPTION SK-3071-M5-7 |
| | | | | | | | | .081 THK | THE TECHNICAL MATERIEL CORP. MAMARONECK, NEW YORK | |
| | | | | | | | | ALUMINUM | BRACKET, MTG, SUPPORT (P.C. CARD BIN) | |
| | | | | | | | | 5052-H32 | | |
| | | | | | | | | TYPE & TEMPER | HEAT TREAT. SPEC. | DRAWN |
| | | | | | | | | YELLOW IRIDITE | | W. JORDAN |
| | | | | | | | | 5909 | | 2/8/65 |
| | | | | | | | | FINISH & SPEC. NO. | ELEC. DES. APP. | MECH. DES. APP. |
| | | | | | | | | | | MS4107 \emptyset |

ORIGINAL RELEASE FOR PRODUCTION 2-10-65
EXPER. RELEASE 1-26-65
UNLESS OTHERWISE SPECIFIED DIMENSIONS ARE IN INCHES AND INCLUDE CHEMICALLY APPLIED OR PLATED FINISHES
TOLERANCES
DECIMALS
.X \pm .05
.XX \pm .01
.XXX \pm .005
FRACTIONS
 \pm 1/64
ANGLES
 \pm 0° 30'

SCALE #
CODE A

DATE 2-10-65
CH. NO. 22
DRAFTS JCB
CHECKER JM
ENG. APP. J.L.
DRAWN JCB
CHECKED RJC
FINAL APPROVAL W. JORDAN 2/8/65

| | | | | | |
|---------------|---------|------------|---------|--------|---|
| REQ. PER UNIT | USED ON | | | MS4108 | B |
| | MODEL | ASS'Y. NO. | DATE | | |
| 1 | RTPA-1 | A4050 | 1-26-65 | | |



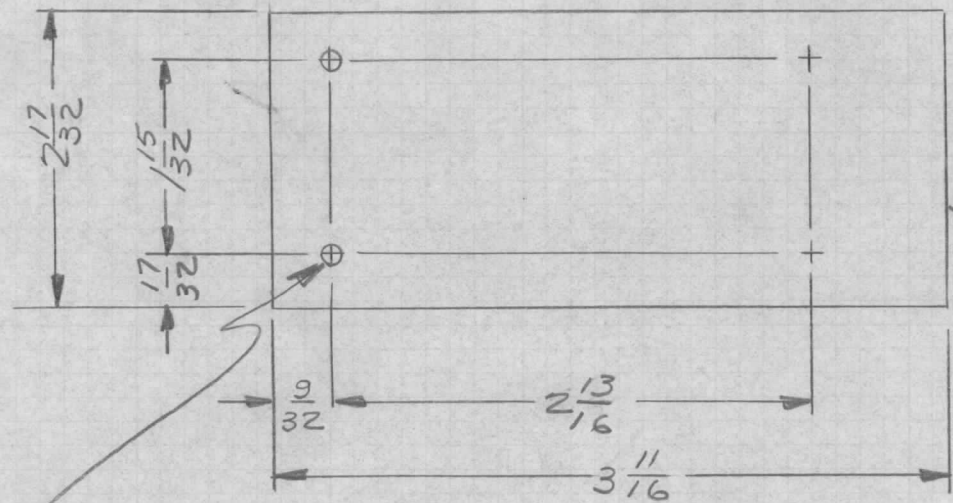
ALL HOLES
3/16 DIA. (G-REQ'D)

METAL STAMP TMC P/N
W/ LATEST REVISION LETTER
1/8 GOTHIC.

LD 2055 (RTPA-1)
REF: LD 1974 (RTPD, F, G)

| | | | | | | | | | | | | | |
|---|---------------------------------|---|--------------|--------------------|----------------|------------------------|------------|-----------------------|--|---------------------|--------------|----------------|---|
| B | ADD. REF: LD2055 | 3-28-66 | 16013 | HLA | JCS | JEE | REQ. ITEM | PART NO. | EATON | DESCRIPTION | SK-3071-MS-8 | SYMBOL | |
| A | CLERICAL CHANGE | 7-27-65 | X | DW | JCS | JEE | -081 THK | | THE TECHNICAL MATERIEL CORP. MAMARONECK, NEW YORK | | | | |
| A | ORIGINAL RELEASE FOR PRODUCTION | 2-10-65 | X | DL | JCS | | STOCK SIZE | | PLATE, COVER, REAR | | | | |
| X | EXPER. RELEASE | 1-26-65 | X | JF | JM | | ALUMINUM | | (P.C. CARD BIN SUPPORT) | | | | |
| SYM | DESCRIPTION | DATE | CH. NO. | DRAFTS | CHECKER | ENG. APP. | MATERIAL | | | | | | |
| UNLESS OTHERWISE SPECIFIED DIMENSIONS ARE IN INCHES AND INCLUDE CHEMICALLY APPLIED OR PLATED FINISHES | | SCALE | | 50 52-H32 | | -44 | | J.L. | | JCS | | RJC | |
| | | | | TYPE & TEMPER | | HEAT TREAT. SPEC. | | DRAWN | | CHECKED | | FINAL APPROVAL | |
| DECIMALS .X ± .05 .XX ± .01 .XXX ± .005 | | FRACTIONS ± 1/64 ANGLES ± 0° 30' | | CODE A | | YELLOW IRIDITE 5404 | | J.S. JORDAN 2/8/65 | | W. JORDAN 2/8/65 | | MS4108 | B |
| TOLERANCES | | | | FINISH & SPEC. NO. | | | | ELEC. DES. APP. | | MECH. DES. APP. | | | |

| | | | | |
|---------------|---------|------------|------|--------------------|
| REQ. PER UNIT | USED ON | | | MS4109 \emptyset |
| | MODEL | ASS'Y. NO. | DATE | |
| 1 | RTPA-1 | | | |



METAL STAMP TMC PT. NO. MS 4109- , 1/8 GOTHIC W/LATEST REV. LETTER, ON REAR.

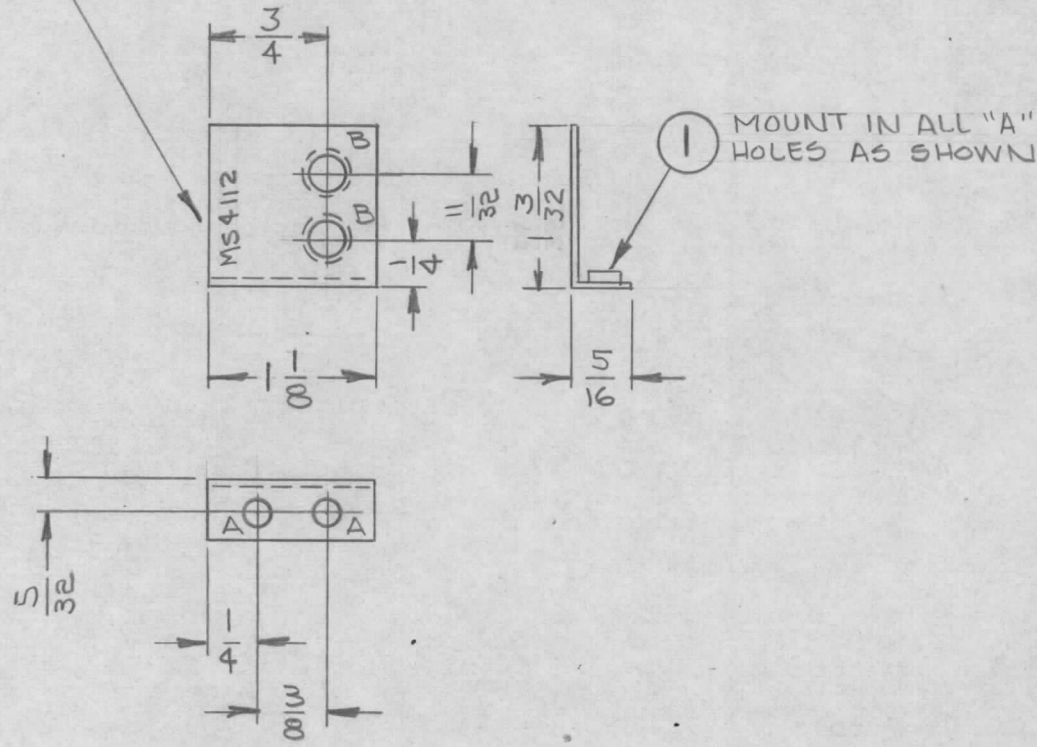
1/8 DIA HOLE
4-REQD

FRONT VIEW SHOWN

| | | | | | | | | | | | | | |
|---|---------------------------------|--|-------------|--------|---------|-----------|---------------------|-------------------|--|------------------|--------------------|--------|--|
| | | | | | | | REQ. ITEM | PART NO. | EATON | DESCRIPTION | SK-3071-M-10 | SYMBOL | |
| | | | | | | | | .062 THK | THE TECHNICAL MATERIEL CORP. MAMARONECK. NEW YORK | | | | |
| | | | | | | | | ALUMINUM | COVER - RELAY PLATE | | | | |
| \emptyset | ORIGINAL RELEASE FOR PRODUCTION | 2/10/65 | \emptyset | 21 | JCB | | | | | | | | |
| SYM | DESCRIPTION | DATE | CH. NO. | DRAFTS | CHECKER | ENG. APP. | MATERIAL | | | | | | |
| UNLESS OTHERWISE SPECIFIED DIMENSIONS ARE IN INCHES AND INCLUDE CHEMICALLY APPLIED OR PLATED FINISHES | | SCALE | | | | | 5052-H32 | | | J.L. | JM JCB | RAL | |
| DECIMALS .X \pm .05 .XX \pm .01 .XXX \pm .005 | | FRACTIONS \pm 1/64 ANGLES \pm 0° 30' | | CODE | | | TYPE & TEMPER | HEAT TREAT. SPEC. | DRAWN | CHECKED | FINAL APPROVAL | | |
| TOLERANCES | | | | | | | YELLOW IRIDITE 5402 | | J.P. Eaton 2/8/65 | W. JORDAN 2/8/65 | MS4109 \emptyset | | |
| | | | | | | | FINISH & SPEC. NO. | | ELEC. DES. APP. | MECH. DES. APP. | | | |

METAL STAMP TMC PART NO. 1/8
HIGH GOTHIC, WITH LATEST
REVISION LETTER.

| REQ. PER UNIT | USED ON | | | MS4112 | A |
|---------------|--------------|------------|----------|--------|---|
| | MODEL | ASS'Y. NO. | DATE | | |
| 1 | VLRB-1/EX208 | A3750 | 10-28-64 | | |



| HOLE | DESCRIPTION | REQ. |
|------|--|------|
| A | .136 - .139 DIA | 2 |
| B | .167 DIA, C'SINK 60°, .015 DP, ON REAR | 2 |

UNLESS OTHERWISE SPECIFIED:

1. USE MATERIAL THICKNESS FOR MAXIMUM RADIUS ON ALL BENDS
2. ALL ANGULAR BENDS 90 DEGREES
3. REMOVE ALL BURRS AND SHARP EDGES
4. MOUNT INSERTS AFTER FINISHING

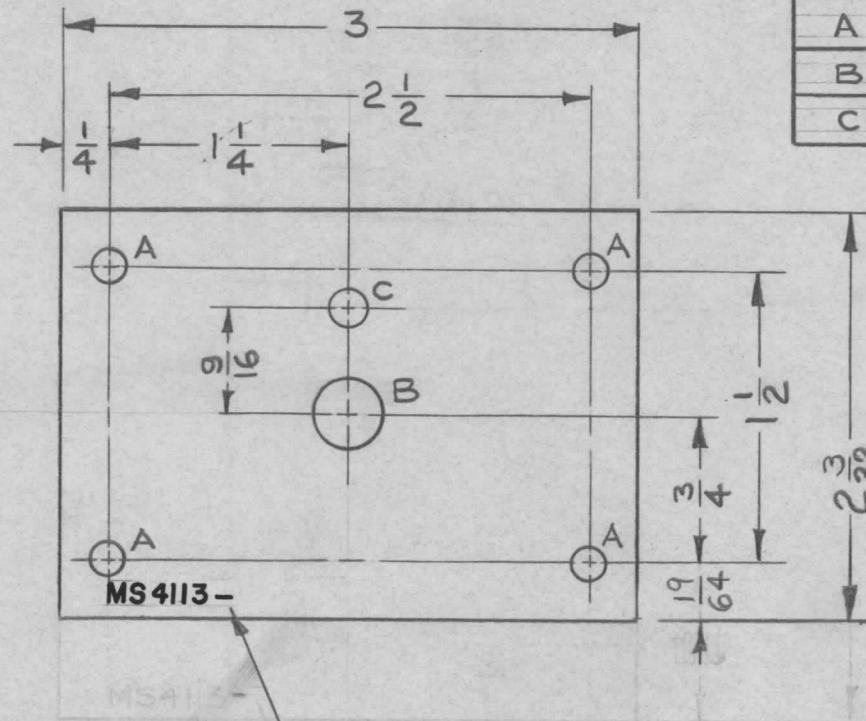
| | | | | |
|---|---|--------------------|--|---------------------------------|
| 2 | 1 | NT129-256-3 | NUT, PLAIN, SPLINE | A |
| REQ. ITEM | PART NO. | | GELLMAN DESCRIPTION | SYMBOL |
| A | .040 THK | | THE TECHNICAL MATERIEL CORP. MAMARONECK, NEW YORK | |
| Ø | STOCK SIZE | | SHIELD, R.F. | |
| X | COPPER | | | |
| SYM | DESCRIPTION | | MATERIAL | |
| UNLESS OTHERWISE SPECIFIED DIMENSIONS ARE IN INCHES AND INCLUDE CHEMICALLY APPLIED OR PLATED FINISHES | | SCALE | 1:1 | |
| DECIMALS .X ± .05 .XX ± .01 .XXX ± .005 | FRACTIONS ± 1/64 ANGLES ± 0° 30' | CODE | A | |
| TOLERANCES | | TYPE & TEMPER | | HEAT TREAT. SPEC. |
| | | DRAWN | | CHECKED |
| | | FINISH & SPEC. NO. | | ELEC. DES. APP. MECH. DES. APP. |
| | | G. Swann @ 11-3-64 | | FINAL APPROVAL |
| | | M. Haffner | | MS4112 A |

NOTE:

REMOVE ALL BURRS AND SHARP EDGES

| | | | | | |
|---------------|---------|------------|----------|--------|---|
| REQ. PER UNIT | USED ON | | | MS4113 | A |
| | MODEL | ASS'Y. NO. | DATE | | |
| 1 | TTR-10 | AX418 | 10.28.64 | | |

| HOLE | DESCRIPTION | REQ |
|------|-------------|-----|
| A | 5/32 DIA | 4 |
| B | 3/8 DIA | 1 |
| C | 3/16 DIA | 1 |



METAL STAMP TMC P/N
1/8 HIGH GOTHIC WITH
LATEST REV. LETTER

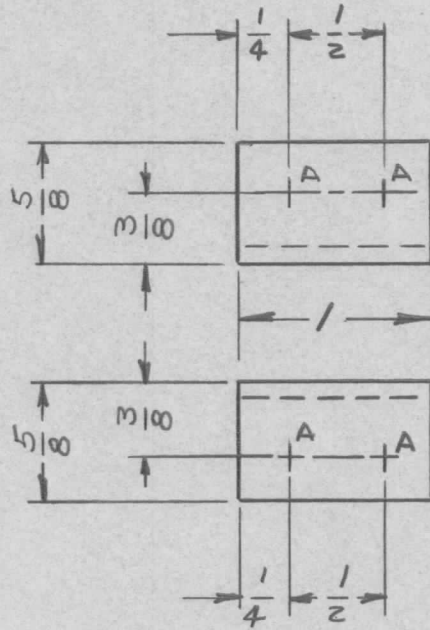
REF: LD1644

| SYM | DESCRIPTION | DATE | CH. NO. | DRAFTS | CHECKER | ENG. APP. | REQ. ITEM | PART NO. | O. POSE | DESCRIPTION | SYMBOL | |
|---|---------------------------------|----------|---------|--------|---------|-----------|--------------------|-------------------|-----------------|--|----------------|---------------|
| A | 2 3/32 WAS 2 5/8, 1/4 WAS 5/64 | 8-4-65 | 14602 | REV. | JCB | MM | .064 THK | | | THE TECHNICAL MATERIEL CORP. MAMARONECK, NEW YORK | A | |
| Ø | ORIGINAL RELEASE FOR PRODUCTION | 12-28-64 | Ø | J.L. | | | STOCK SIZE | | | | | |
| X | EXPER. RELEASE | 12.9.64 | X | J.B. | | | ALUMINUM | | | | | PLATE, DETENT |
| UNLESS OTHERWISE SPECIFIED DIMENSIONS ARE IN INCHES AND INCLUDE CHEMICALLY APPLIED OR PLATED FINISHES | | | | | | | SCALE | | | | | |
| | | | | | | | 1:1 | | | | | |
| | | | | | | | 5052-H32 | | JNB | @ 12-23-64 | RJC | |
| | | | | | | | TYPE & TEMPER | HEAT TREAT. SPEC. | DRAWN | CHECKED | FINAL APPROVAL | |
| | | | | | | | S404 YELL. IRIDITE | | J.D. 12-23-64 | J.R. | MS4113 | |
| | | | | | | | FINISH & SPEC. NO. | | ELEC. DES. APP. | MECH. DES. APP. | | |

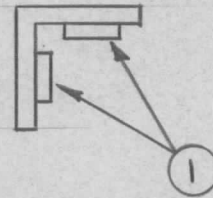
UNLESS OTHERWISE SPECIFIED:

1. USE MATERIAL THICKNESS FOR MAXIMUM RADIUS ON ALL BENDS
2. ALL ANGULAR BENDS 90 DEGREES
3. REMOVE ALL BURRS AND SHARP EDGES
4. MOUNT INSERTS AFTER FINISHING

| REQ. PER UNIT | USED ON | | | MS4114 | Ø |
|---------------|---------|------------|---------|--------|---|
| | MODEL | ASS'Y. NO. | DATE | | |
| 4 | RTIA-1 | A4063 | 1-25-65 | | |



| HOLE | DESCRIPTION | REQ |
|------|---------------|-----|
| A | .191-.194 DIA | 4 |



1 MOUNT IN ALL "A" HOLES AS SHOWN AFTER FINISHING.

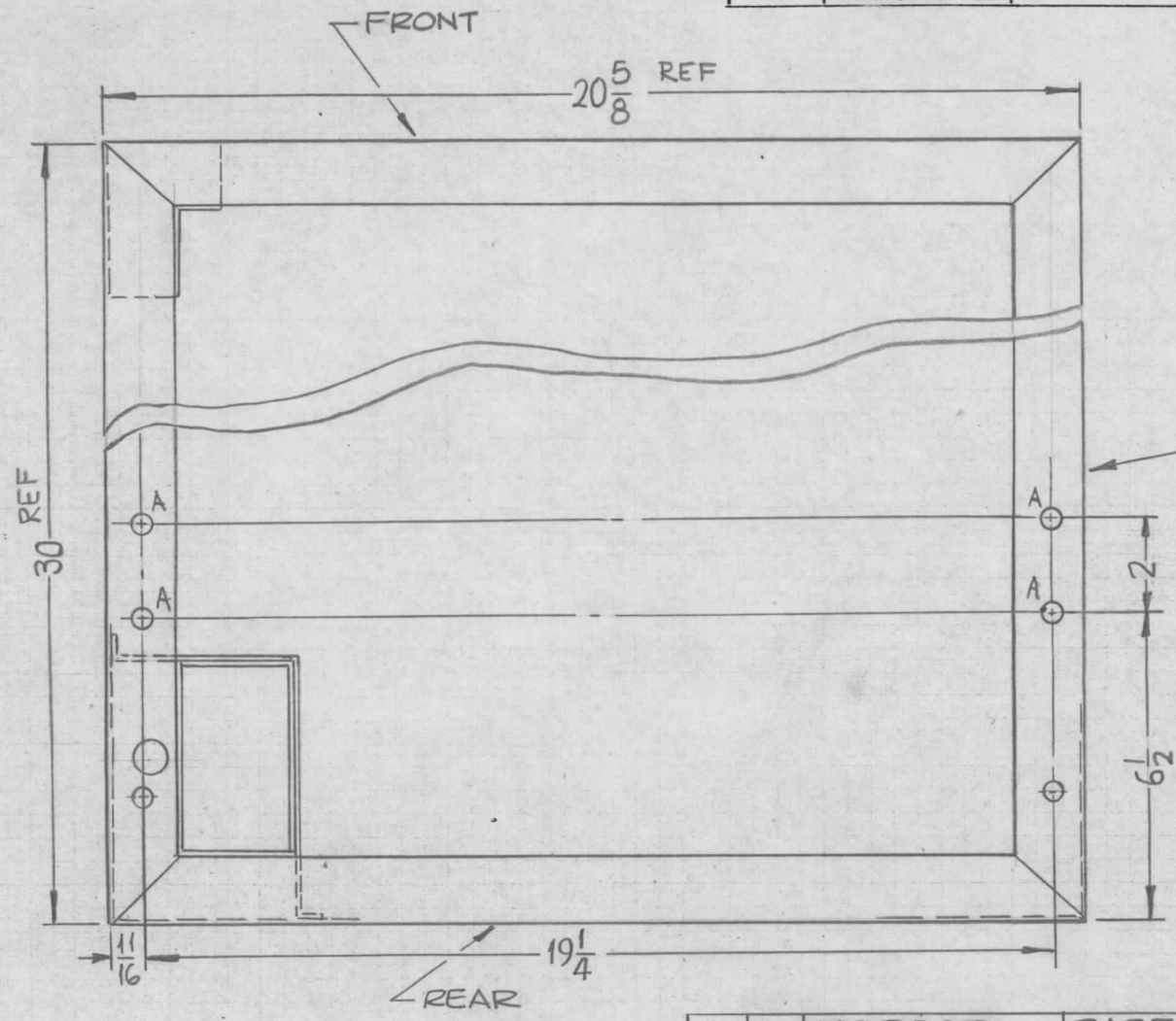
| REQ. ITEM | PART NO. | DESCRIPTION | SYMBOL |
|-----------|----------|--------------------------------|---|
| 4 | 1 | NT129-632-4 NUT, PLAIN, SPLINE | A |
| | | .081 THK STOCK SIZE | THE TECHNICAL MATERIEL CORP. MAMARONECK, NEW YORK |
| | | ALUMINIUM MATERIAL | BRACKET, MTG - REINFORCING BRACE |
| | | 5052-H32 | Ø |
| | | TYPE & TEMPER | HEAT TREAT. SPEC. |
| | | 3104 YELLOW IRDTE | W. JORDAN |
| | | FINISH & SPEC. NO. | ELEC. DES. APP. MECH. DES. APP. |
| | | | MS4114 |

| SYM | DESCRIPTION | DATE | CH. NO. | DRAFTS | CHECKER | ENG. APP. |
|-----|---------------------------------|---------|---------|--------|---------|-----------|
| Ø | ORIGINAL RELEASE FOR PRODUCTION | 2-8-65 | Ø | P.L. | | |
| X1 | REDRAWN - NO CHANGES | 1-25-65 | X1 | Ø | JM | |

| UNLESS OTHERWISE SPECIFIED DIMENSIONS ARE IN INCHES AND INCLUDE CHEMICALLY APPLIED OR PLATED FINISHES | | SCALE |
|---|--|-------|
| | | 1/4 |

| DECIMALS | FRACTIONS | CODE |
|-------------|-----------|------|
| .X ± .05 | ± 1/64 | A |
| .XX ± .01 | ANGLES | |
| .XXX ± .005 | ± 0° 30' | |

| | | | | |
|---------------|---------|------------|---------|----------|
| REQ. PER UNIT | USED ON | | | MS4122 Ø |
| | MODEL | ASS'Y. NO. | DATE | |
| 1 | COPA-2 | | 11-9-64 | |



| HOLE | DESCRIPTION | REQ. |
|------|-------------|------|
| A | 15/64 DIA. | 4 |

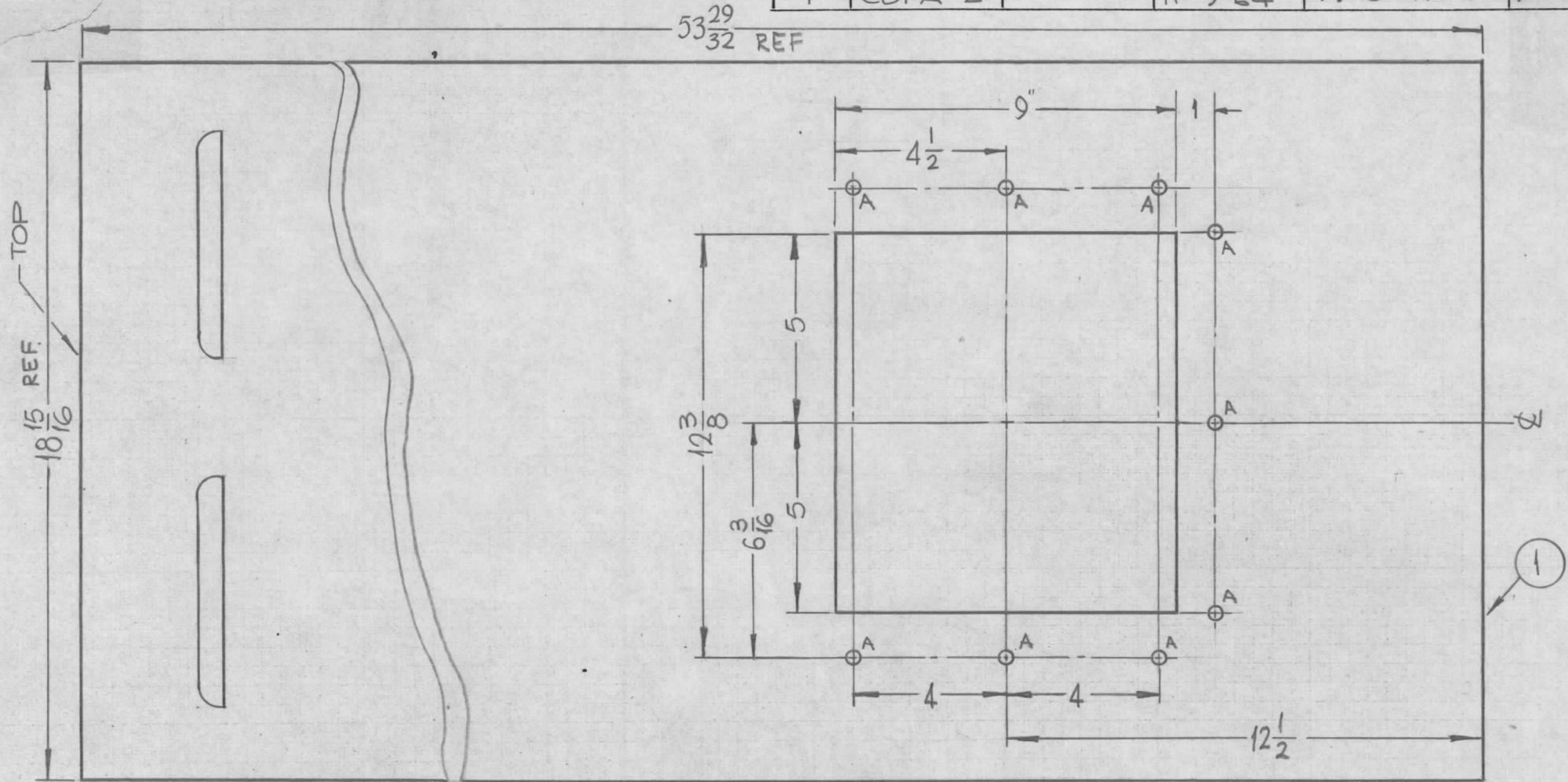
① MODIFIED BY ADDING "A" HOLES

| | | | | | | | |
|---|---------------------------------|--------------------|----------|-------------------|--|-----------------|------------|
| | | 1 | 1 | MS 3863 | BASE, ELECTRICAL EQUIP. | | |
| | | REQ. ITEM | PART NO. | | M. STURMER DESCRIPTION | | SYMBOL |
| Ø | ORIGINAL RELEASE FOR PRODUCTION | 11-17-64 | Ø | 9.L. | THE TECHNICAL MATERIEL CORP. MAMARONECK, NEW YORK | | |
| X | EXP. RELEASE | 11-9-64 | X | SRG | BASE, ELECTRICAL EQUIP. | | |
| SYM | DESCRIPTION | DATE | CH. NO. | DRAFTS | CHECKER | ENG. APP. | |
| UNLESS OTHERWISE SPECIFIED DIMENSIONS ARE IN INCHES AND INCLUDE CHEMICALLY APPLIED OR PLATED FINISHES | | SCALE | | | | | |
| | | 1/4:1 | | | | | |
| DECIMALS | FRACTIONS | CODE | | | | | |
| .X ± .05 | ± 1/64 | A | | | | | |
| .XX ± .01 | ANGLES ± 0° 30' | | | | | | |
| XXX ± .005 | | | | | | | |
| | | TYPE & TEMPER | | HEAT TREAT. SPEC. | | DRAWN | CHECKED |
| | | | | | | SRG | @ 11-16-64 |
| | | FINISH & SPEC. NO. | | ELEC. DES. APP. | | MECH. DES. APP. | MS4122 Ø |
| | | | | | | | |

| HOLE | DESCRIPTION | REQ. |
|------|-------------|------|
| A | 13/64 DIA. | 9 |

| REQ. PER UNIT | USED ON | |
|---------------|---------|---------|
| | MODEL | DATE |
| 1 | COPA-2 | 11-9-64 |

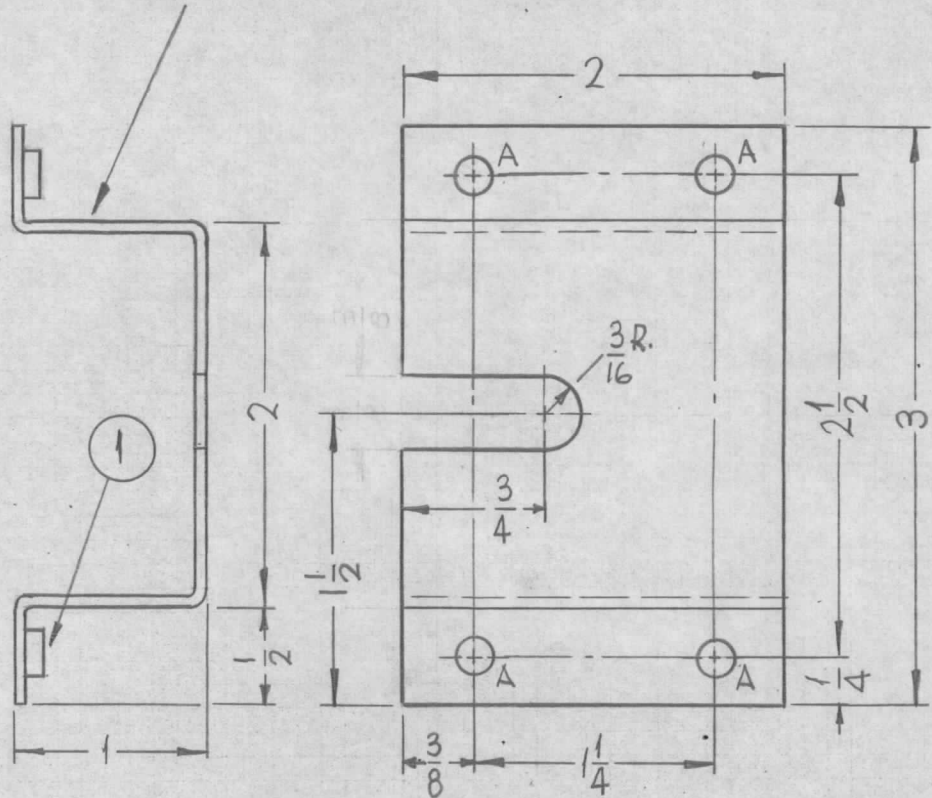
MS4123 Ø



| REQ. | ITEM | PART NO. | DESCRIPTION | SYMBOL | | | | |
|---|-------------|---------------------------------|--|--------|---------|-----------|----------|--|
| 1 | 1 | MS 3865 | COVER, REAR | | | | | |
| — # — | | | THE TECHNICAL MATERIEL CORP. MAMARONECK, NEW YORK | | | | | |
| Ø | | ORIGINAL RELEASE FOR PRODUCTION | 11-17-64 | Ø 2L | | | | |
| X | | EXP. RELEASE | 11-9-64 | X SRG | | | | |
| SYM | DESCRIPTION | DATE | CH. NO. | DRAFTS | CHECKER | ENG. APP. | MATERIAL | |
| UNLESS OTHERWISE SPECIFIED DIMENSIONS ARE IN INCHES AND INCLUDE CHEMICALLY APPLIED OR PLATED FINISHES | | SCALE | 1/4:1 | | | | | |
| DECIMALS | FRACTIONS | CODE | TYPE & TEMPER | | | | | |
| X ± .05 | ± 1/64 | A | HEAT TREAT. SPEC. | | | | | |
| .XX ± .01 | ANGLES | | DRAWN | | | | | |
| XXX ± .005 | ± 0° 30' | | CHECKED | | | | | |
| | | | FINISH & SPEC. NO. | | | | | |
| | | | ELEC. DES. APP. | | | | | |
| | | | MECH. DES. APP. | | | | | |
| | | | SRG @ 11-16-64 | | | | | |
| | | | RAC | | | | | |
| | | | 11-16-64 | | | | | |
| | | | MS4123 Ø | | | | | |

| | | | | | |
|---------------|---------|------------|---------|--------|---|
| REQ. PER UNIT | USED ON | | | MS4126 | Ø |
| | MODEL | ASS'Y. NO. | DATE | | |
| 2 | COPA-2 | | 11-5-64 | | |

METAL STAMP TMC PART NO.
(MS4126-) 1/8 HIGH GOTHIC
W/LATEST REV. LETTER



| HOLE | DESCRIPTION | REQ |
|------|--------------|-----|
| A | .191-194 DIA | 4 |

- UNLESS OTHERWISE SPECIFIED:
1. USE MATERIAL THICKNESS FOR MAXIMUM RADIUS ON ALL BENDS
 2. ALL ANGULAR BENDS 90 DEGREES
 3. REMOVE ALL BURRS AND SHARP EDGES
 4. MOUNT INSERTS AFTER FINISHING

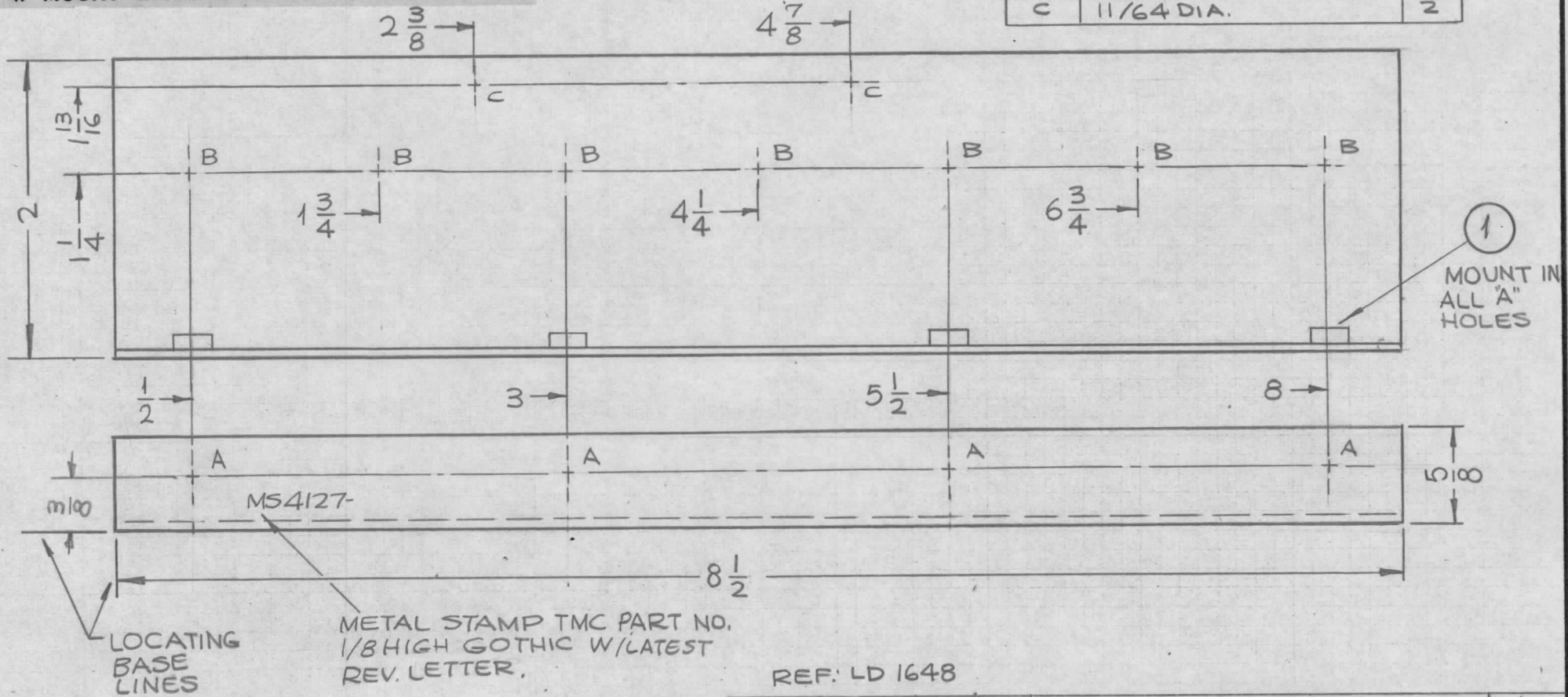
| | | | | | |
|---|---|--------------|--|-------------------|-------------------|
| 4 | 1 | NT-129-632-4 | NUT, PLAIN, SPLINE | | A |
| REQ. ITEM | PART NO. | | STURMER DESCRIPTION | | SYMBOL |
| | .064 THICK | | THE TECHNICAL MATERIEL CORP. MAMARONECK, NEW YORK | | |
| | ALUMINUM | | BRACKET, MTG, REEL ROD | | |
| UNLESS OTHERWISE SPECIFIED DIMENSIONS ARE IN INCHES AND INCLUDE CHEMICALLY APPLIED OR PLATED FINISHES | | SCALE | | | |
| | | 1:1 | | | |
| DECIMALS .X ± .05 .XX ± .01 .XXX ± .005 | FRACTIONS ± 1/64 ANGLES ± 0° 30' | CODE A | 5052-H32 | — | SRG @11-16-64 RJE |
| TOLERANCES | | | TYPE & TEMPER | HEAT TREAT. SPEC. | DRAWN |
| | | | S404 YELLOW IRIDITE | | CHECKED |
| | | | FINISH & SPEC. NO. | ELEC. DES. APP. | MECH. DES. APP. |
| | | | | | MS4126 Ø |

UNLESS OTHERWISE SPECIFIED:

1. USE MATERIAL THICKNESS FOR MAXIMUM RADIUS ON ALL BENDS
2. ALL ANGULAR BENDS 90 DEGREES
3. REMOVE ALL BURRS AND SHARP EDGES
4. MOUNT INSERTS AFTER FINISHING

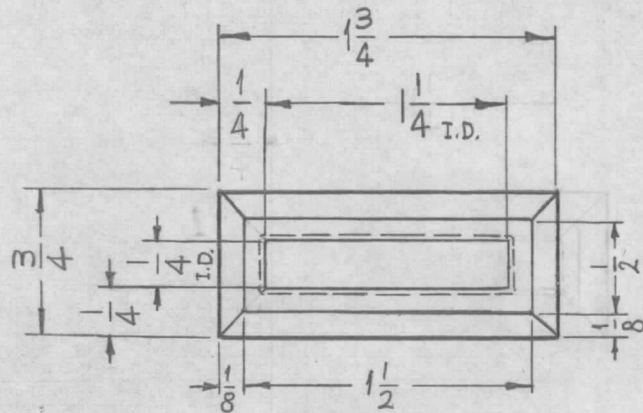
| | | | | |
|---------------|---------|------------|---------|---|
| REQ. PER UNIT | USED ON | | MS4127 | Φ |
| | MODEL | ASS'Y. NO. | | |
| 1 | COPA-2 | | 11-5-64 | |

| HOLE | DESCRIPTION | REQ |
|------|----------------|-----|
| A | .191-.194 DIA. | 4 |
| B | 7/16 DIA. | 7 |
| C | 11/64 DIA. | 2 |



| | | | | | |
|---|---------------------------------|--------------|------------------------------|-------------------|-----------------|
| 4 | 1 | NT 129-632-4 | NUT, PLAIN, SPLINE | | A |
| REQ. | ITEM | PART NO. | DESCRIPTION | | SYMBOL |
| Φ | | .064 THICK | THE TECHNICAL MATERIEL CORP. | | |
| X | | STOCK SIZE | MAMARONECK, NEW YORK | | |
| SYM | DESCRIPTION | DATE | CH. NO. | DRAFTS | CHECKER |
| | ORIGINAL RELEASE FOR PRODUCTION | 11-18-64 | Φ | @ | |
| | EXP. RELEASE | 11-5-64 | X | SRG | |
| UNLESS OTHERWISE SPECIFIED DIMENSIONS ARE IN INCHES AND INCLUDE CHEMICALLY APPLIED OR PLATED FINISHES | | SCALE | MATERIAL | | |
| | | 1:1 | 5052-H32 | | |
| DECIMALS | | FRACTIONS | TYPE & TEMPER | HEAT TREAT. SPEC. | DRAWN |
| .X ± .05 | TOLERANCES | ± 1/64 | 5404 YELLOW IRIDITE | | @ 11-18-64 |
| .XX ± .01 | | ANGLES | FINISH & SPEC. NO. | | CHECKED |
| .XXX ± .005 | | ± 0° 30' | ELEC. DES. APP. | | MECH. DES. APP. |
| | | CODE | ELEC. DES. APP. | | MECH. DES. APP. |
| | | A | MS4127 | | Φ |

| | | | | | |
|---------------|---------|------------|---------|--------|---|
| REQ. PER UNIT | USED ON | | | MS4130 | Ø |
| | MODEL | ASS'Y. NO. | DATE | | |
| 2 | COPA-2 | | 11-6-64 | | |



NOTE:
REMOVE ALL BURRS &
SHARP EDGES.

STAINLESS STEEL .025 THICK



SILVER SOLDER
AROUND & GRIND
SMOOTH.

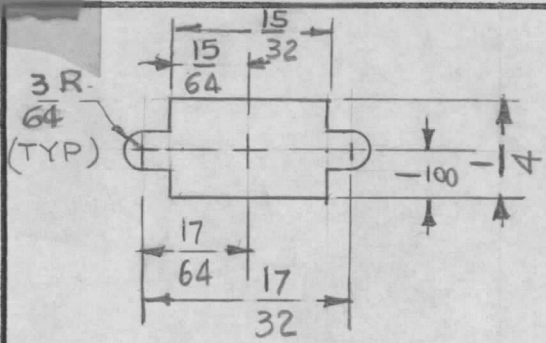
1°
(4 PLACES)

MS4130-

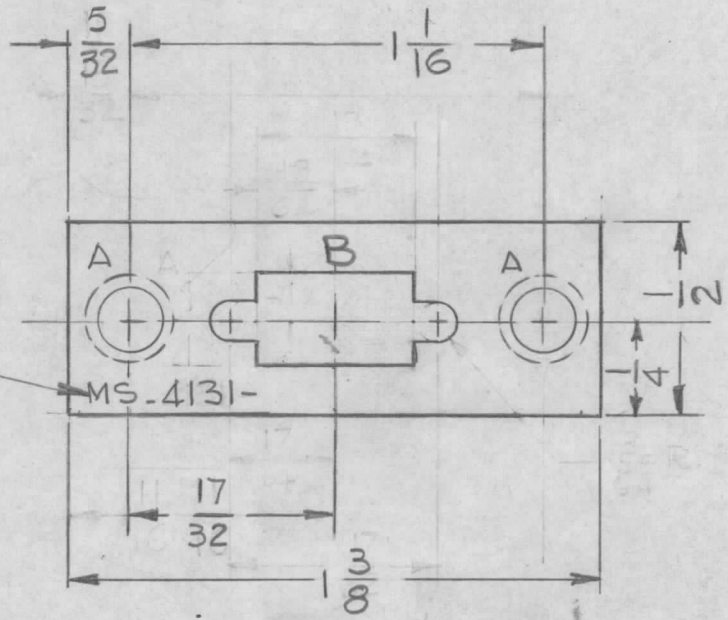
FORMED COPPER TUBING .031 THICK

METAL STAMP TMC
PART NO., 1/8 HIGH
GOTHIC W/LATEST
REV. LETTER

| SYM | DESCRIPTION | DATE | CH. NO. | DRAFTS | CHECKER | ENG. APP. | REQ. ITEM | PART NO. | M. STURMER DESCRIPTION | SYMBOL | |
|-----|---|------------|---|--------|---------|-----------|---------------------------|-------------------|--|------------|----------------|
| | | | | | | | AS NOTED | | THE TECHNICAL MATERIEL CORP. MAMARONECK. NEW YORK | | |
| Ø | ORIGINAL RELEASE FOR PRODUCTION | 11-17-64 | Ø | RL | | | STOCK SIZE | | | | |
| X | EXP. RELEASE | 11-6-64 | X | SRG | | | AS NOTED | | GUIDE, TAPE | | |
| | | | | | | | MATERIAL | | | | |
| | UNLESS OTHERWISE SPECIFIED DIMENSIONS ARE IN INCHES AND INCLUDE CHEMICALLY APPLIED OR PLATED FINISHES | SCALE | 1:1 | | | | — | — | SRG | @ 11-13-64 | RL |
| | DECIMALS .X ± .05 .XX ± .01 .XXX ± .005 | TOLERANCES | FRACTIONS ± 1/64 ANGLES ± 0° 30' | CODE | A R+R | | TYPE & TEMPER | HEAT TREAT. SPEC. | DRAWN | CHECKED | FINAL APPROVAL |
| | | | | | | | S-135 NICKEL PLATE BRIGHT | | | 11-16-64 | MS4130 |
| | | | | | | | FINISH & SPEC. NO. | ELEC. DES. APP. | MECH. DES. APP. | | Ø |



DETAIL "B"



HOLES - REQ.
 A - .161 - .164 DIA. 2
 B - SEE DETAIL 1

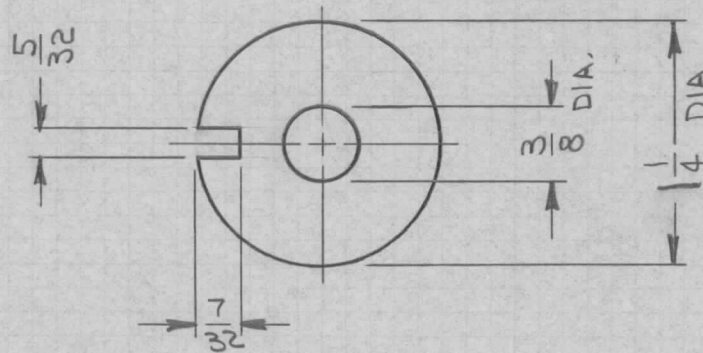
1 MOUNT IN 2 "A" HOLES

METAL STAMP TMC P/N.
 1/8 HIGH GOTHIC W/LATEST
 REVISION LETTER

REMOVE ALL BURRS AND SHARP EDGES.
 MOUNT INSERTS AFTER FINISHING

| REQ. PER UNIT | MODEL | ASS'Y. NO. | DATE | USED ON | | | | | | | | |
|---|---------------------------------|---|---------|----------|---------|-----------|-----------|--------------------|--|-----------------|-----------------|----------------|
| 2 | SMRA-1 | | 11-3-64 | MS4131 A | | | | | | | | |
| SYM | DESCRIPTION | DATE | CH. NO. | DRAFTS | CHECKER | ENG. APP. | REQ. ITEM | PART NO. | AALTONEN DESCRIPTION | SYMBOL | | |
| A | MODEL WAS SMR-1 | 2-12-65 | 13624 | 92 | RU | | 1 | NT129-440-4 | NUT, PLAIN, SPLINE | A | | |
| Ø | ORIGINAL RELEASE FOR PRODUCTION | 12-1-64 | Ø | 92 | | | | .064 THK | THE TECHNICAL MATERIEL CORP. MAMARONECK, NEW YORK | | | |
| X | EXP. RELEASE | 11-3-64 | | GDL | | | | ALUMINUM | | PLATE, MOUNTING | | |
| | | | | | | | | | | CONNECTOR | | |
| UNLESS OTHERWISE SPECIFIED DIMENSIONS ARE IN INCHES AND INCLUDE CHEMICALLY APPLIED OR PLATED FINISHES | | SCALE | | 2:1 | | | | 5052-H32 | | G.D.L. 11-3-64 | @ | RAJ |
| DECIMALS .X ± .05 .XX ± .01 .XXX ± .005 | | FRACTIONS ± 1/64 ANGLES ± 0° 30' | | CODE | | A | | TYPE & TEMPER | HEAT TREAT. SPEC. | DRAWN | CHECKED | FINAL APPROVAL |
| TOLERANCES | | | | | | | | S404 YEL IRIDITE | | Tka | | MS4131 A |
| | | | | | | | | FINISH & SPEC. NO. | | ELEC. DES. APP. | MECH. DES. APP. | |

| | | | | |
|---------------|---------|------------|----------|----------|
| REQ. PER UNIT | USED ON | | | MS4142 Ø |
| | MODEL | ASS'Y. NO. | DATE | |
| 1 | PFCB-1 | | 11-12-64 | |

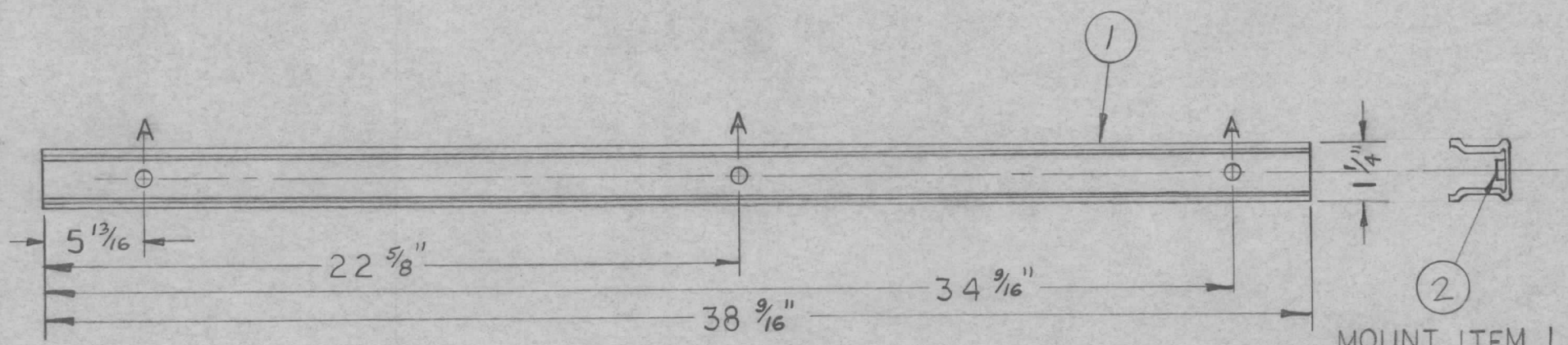


NOTE:
REMOVE BURRS & SHARP EDGES.

| SYM | DESCRIPTION | DATE | CH. NO. | DRAFTS | CHECKER | ENG. APP. | REQ. ITEM | PART NO. | O. POSE | DESCRIPTION | SYMBOL | |
|-----|---|---|---------|------------|---------|-----------|-----------|---------------------|-------------------|--|-----------------|----------------|
| Ø | ORIGINAL RELEASE FOR PRODUCTION | 11-30-64 | Ø | @ | | | | .064 THK | | THE TECHNICAL MATERIEL CORP. MAMARONECK, NEW YORK | SPACER | |
| X | EXPER. RELEASE | 11-12-64 | X | <i>Jim</i> | | | | ALUMINUM | | | | |
| | | | | | | | | MATERIAL | | | | |
| | UNLESS OTHERWISE SPECIFIED DIMENSIONS ARE IN INCHES AND INCLUDE CHEMICALLY APPLIED OR PLATED FINISHES | SCALE | 1:1 | | | | | 5052-H32 | — | <i>G. Jensen</i> @ 11-13-64 | <i>RJR</i> | |
| | DECIMALS .X ± .05 .XX ± .01 .XXX ± .005 | FRACTIONS ± 1/64 ANGLES ± 0° 30' | CODE | A | | | | TYPE & TEMPER | HEAT TREAT. SPEC. | DRAWN | CHECKED | FINAL APPROVAL |
| | TOLERANCES | | | | | | | S404 YELLOW IRIDITE | | <i>[Signature]</i> | | MS4142 Ø |
| | | | | | | | | FINISH & SPEC. NO. | | ELEC. DES. APP. | MECH. DES. APP. | |

| | | | | | |
|---------------|---------|------------|------|--------|---|
| REQ. PER UNIT | USED ON | | | MS4144 | Ø |
| | MODEL | ASS'Y. NO. | DATE | | |
| 1 | RAK106 | A-4021 | | | |

-HOLE-
A-.191-.194 DIA. 3 REQ.



MOUNT ITEM 1 IN A HOLES AS SHOWN AFTER FINISHING.

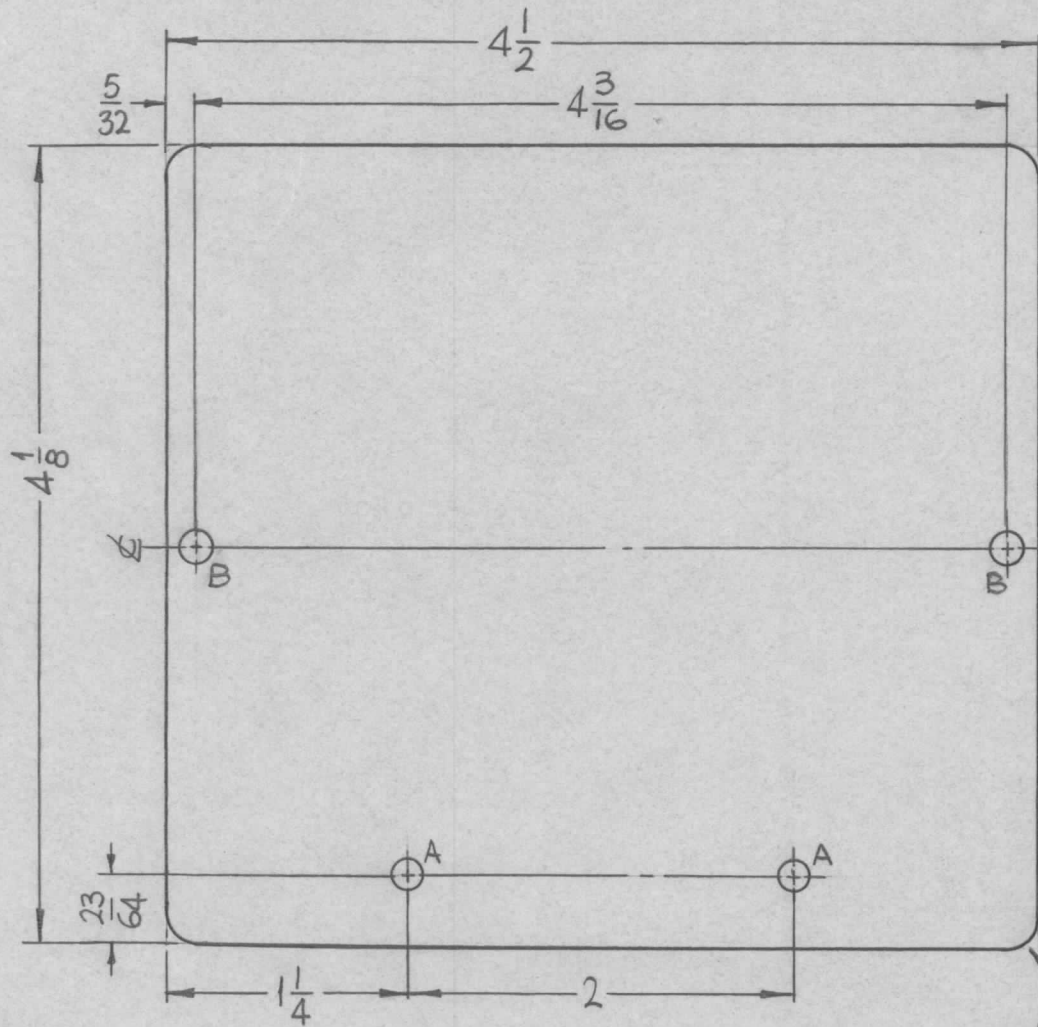
MATERIAL: ...
... MODIFIED AS SHOWN.

| | | | | | | |
|---|----------|-------------|---|-----------------|---------|----------------|
| 3 | 2 | NT129-632-3 | NUT, ROUND, SWAGE TYPE | | | |
| 1 | 1 | PO-160 | CHANNEL (MODIFIED AS SHOWN) | | | |
| REQ. ITEM | PART NO. | | DESCRIPTION | SYMBOL | | |
| STOCK SIZE | | | THE TECHNICAL MATERIEL CORP. MAMARONECK, NEW YORK AC STRIP CHANNEL | | | |
| SEE NOTE | | | | | | |
| MATERIAL | | | | | | |
| TOLERANCES | | | SCALE: NONE | | | |
| DEC. DIM. ± FRAC. DIM. ± ANGULAR DIM. ± | | | MAXIMUM ALLOWABLE TOLERANCES HAVE BEEN DETERMINED AND ANY DEVIATIONS WILL BE CAUSE FOR REJECTION. REMOVE ALL BURRS AND SHARP EDGES | | | |
| TYPE & TEMPER | | | HEAT TREAT. SPEC. | DRAWN | CHECKED | FINAL APPROVAL |
| FINISH & SPEC. NO. | | | ELEC. DES. APP. | MECH. DES. APP. | MS4144 | |

| | | | | | | | |
|-------|------------------|--------------|------|---------|--------|---------|-----------|
| Ø | ORIGINAL RELEASE | 13/8/65 | | | | | |
| ISSUE | ITEM | CHANGED FROM | DATE | CH. NO. | DRAFTS | CHECKER | ENG. APP. |

I. J. [Signature] 12/8/65 [Signature]
 MS4144 Ø

FRONT VIEW



| REQ. PER UNIT | USED ON | | |
|---------------|---------|------------|----------|
| | MODEL | ASS'Y. NO. | DATE |
| 1 | PFCB-1 | | 11-19-64 |

MS4145

| HOLE | DESCRIPTION | REQ. |
|------|-------------|------|
| A | 9/64 DIA. | 2 |
| B | 5/32 DIA. | 2 |

METAL STAMP TMC PART NO. (MS4145-)
1/8 HIGH GOTHIC W/LATEST REVISION
LETTER (ON REAR).

MACHINING:

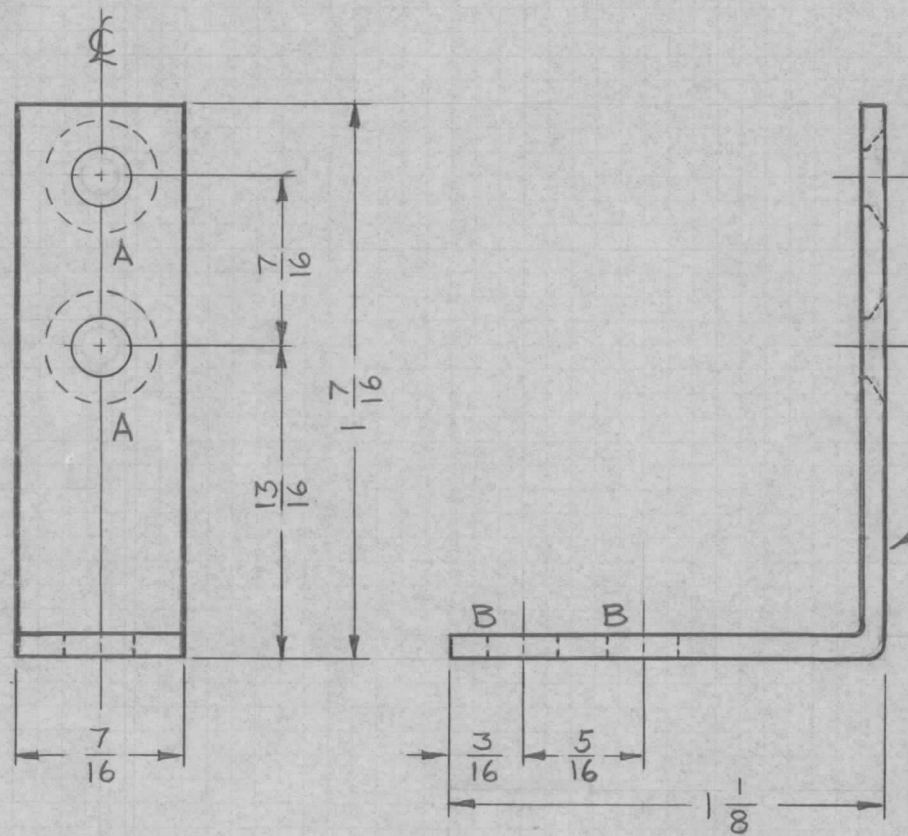
1. MILL ALL EDGES.
2. HOLES MUST BE DRILLED, UNLESS OTHERWISE SPECIFIED.
3. LATERAL BOW OF PANEL MUST BE KEPT TO .031 TOLERANCE.
4. PANEL MUST BE FREE OF ALL MACHINING MARKS, GOUGES AND SCRATCHES, IF NECESSARY, SAND FRONT OF PANEL WITH NO. 120 GRIT SANDPAPER.

FINISH NOTES:

1. S404 - IRIDITE 14-2 AL-COAT.
2. S114 - ZINC CHROMATE PRIMER } FRONT AND
3. S115 - SMOOTH GRAY ENAMEL } EDGES ONLY

| SYM | DESCRIPTION | DATE | CH. NO. | DRAFTS | CHECKER | ENG. APP. | REQ. ITEM | PART NO. | D. POSE | DESCRIPTION | SYMBOL | |
|--|---|---|----------------|--------|---------|-----------|---------------|--------------------|-----------------|--|--------------------|--|
| Ø | ORIGINAL RELEASE FOR PRODUCTION | 11-25-64 | Ø | @ | | | .081 THICK | | | THE TECHNICAL MATERIEL CORP. MAMARONECK, NEW YORK | | |
| X ₁ | ON TITLE BLOCK, "INTERCONNECT MODULE" WAS "DOPPLER CORRECTOR" | 11-23-64 | X ₁ | g.f. | | | STOCK SIZE | | | | | |
| X | EXP. RELEASE | 11-18-64 | X | SRG | | | ALUMINUM | | | | FRONT PANEL, BLANK | |
| | | | | | | | | | | INTERCONNECT MODULE | | |
| | UNLESS OTHERWISE SPECIFIED DIMENSIONS ARE IN INCHES AND INCLUDE CHEMICALLY APPLIED OR PLATED FINISHES | SCALE | | | | | 5052-H32 | | SRG @ | | | |
| | | 1:1 | | | | | TYPE & TEMPER | HEAT TREAT. SPEC. | DRAWN | CHECKED | FINAL APPROVAL | |
| DECIMALS .X ± .05 .XX ± .01 .XXX ± .005 | TOLERANCES | FRACTIONS ± 1/64 ANGLES ± 0° 30' | CODE A | | | | | SEE NOTES | | | | |
| | | | | | | | | FINISH & SPEC. NO. | ELEC. DES. APP. | MECH. DES. APP. | MS4145 Ø | |

| | | | | | |
|---------------|---------|------------|------|---------|---|
| REQ. PER UNIT | USED ON | | | MS 4147 | Φ |
| | MODEL | ASS'Y. NO. | DATE | | |
| 1 | KIT 217 | | | | |



| HOLE | DESCRIPTION | REQ |
|------|--------------------------------|-----|
| A | .144 DIA.-CSK 82° TO .284 DIA. | 2 |
| B | 11/64 DIA. | 2 |

METAL STAMP TMC PART NO. 3/32 HIGH GOTHIC WITH LATEST REVISION LETTER.

UNLESS OTHERWISE SPECIFIED:

1. USE MATERIAL THICKNESS FOR MAXIMUM RADIUS ON ALL BENDS
2. ALL ANGULAR BENDS 90 DEGREES
3. REMOVE ALL BURRS AND SHARP EDGES

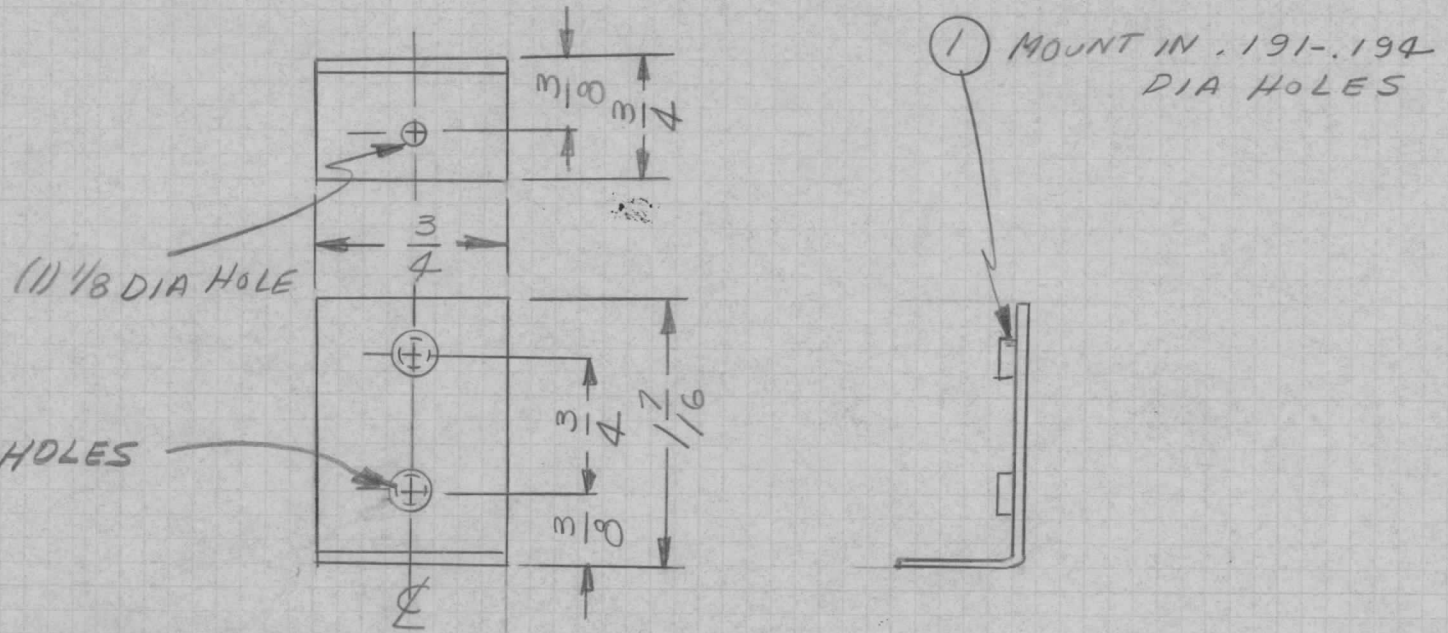
| SYM | DESCRIPTION | DATE | CH. NO. | DRAFTS | CHECKER | ENG. APP. | REQ. ITEM | PART NO. | O. POSE | DESCRIPTION | SYMBOL | |
|-----|---|---------|---------|--------|---------|-----------|-----------|---------------------|-------------------|--|-----------------|----------------|
| | | | | | | | | .064 | | THE TECHNICAL MATERIEL CORP. MAMARONECK, NEW YORK | | |
| | | | | | | | | STOCK SIZE | | | | |
| Φ | ORIGINAL RELEASE FOR PRODUCTION | 12-1-64 | Φ | @ | @ | | | ALUMINUM | | BRACKET, MOUNTING | | |
| | | | | | | | | | | | | |
| | UNLESS OTHERWISE SPECIFIED DIMENSIONS ARE IN INCHES AND INCLUDE CHEMICALLY APPLIED OR PLATED FINISHES | | | | | | | 5052-H32 | | J. Lukars @ | | |
| | | SCALE | | | | | | TYPE & TEMPER | HEAT TREAT. SPEC. | DRAWN | CHECKED | FINAL APPROVAL |
| | | 2:1 | | | | | | 5404 YELLOW IRIDITE | | | | |
| | | | | | | | | FINISH & SPEC. NO. | | ELEC. DES. APP. | MECH. DES. APP. | |
| | | | | | | | | | | | | MS 4147 |
| | | | | | | | | | | | | Φ |

DECIMALS
.X ± .05
.XX ± .01
.XXX ± .005

FRACTIONS
± 1/64
ANGLES
± 0° 30'

TOLERANCES

| | | | | | |
|---------------|---------|------------|------|--------|---|
| REQ. PER UNIT | USED ON | | | MS4149 | Ø |
| | MODEL | ASS'Y. NO. | DATE | | |
| 2 | HFSR-1 | | | | |



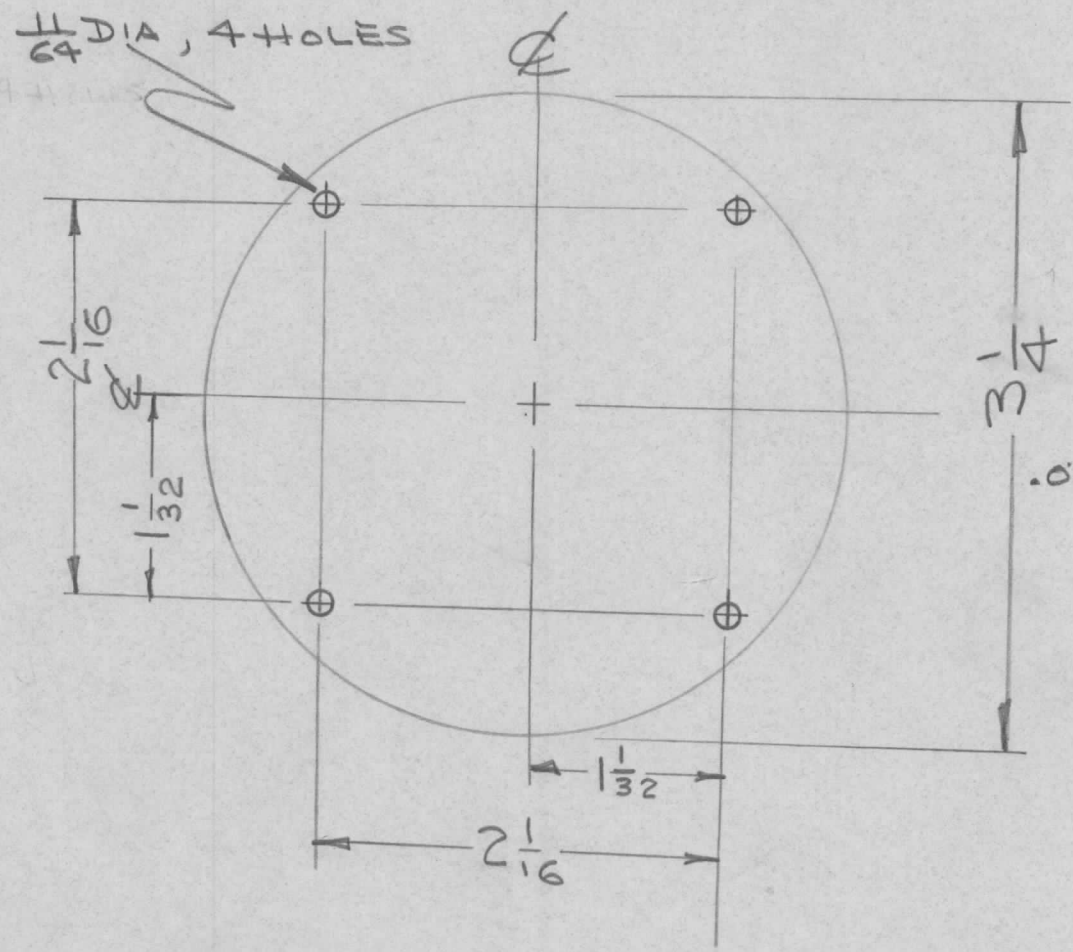
UNLESS OTHERWISE SPECIFIED:

1. USE MATERIAL THICKNESS FOR MAXIMUM RADIUS ON ALL BENDS
2. ALL ANGULAR BENDS 90 DEGREES
3. REMOVE ALL BURRS AND SHARP EDGES
4. MOUNT INSERTS AFTER FINISHING

2 | 1 | WT-129-632-4 | NUT, PLAIN, SPLINE

| | | | | | | | | | | | |
|---|---------------------------------|----------|---------|--------|---------|-----------|--|----------|--------------|--------|--|
| Ø | ORIGINAL RELEASE FOR PRODUCTION | 1-29-65 | # | @ | | | REQ. ITEM | PART NO. | DESCRIPTION | SYMBOL | |
| X | EXP. RELEASE | 11/23/60 | | JL | | | | | SK-3071-MS-5 | | |
| SYM | DESCRIPTION | DATE | CH. NO. | DRAFTS | CHECKER | ENG. APP. | THE TECHNICAL MATERIEL CORP. MAMARONECK, NEW YORK | | | | |
| UNLESS OTHERWISE SPECIFIED DIMENSIONS ARE IN INCHES AND INCLUDE CHEMICALLY APPLIED OR PLATED FINISHES | | | | | | | BRACKET, MTG - LEDEX COVER | | | | |
| SCALE | | | | | | | MATERIAL | | | | |
| DECIMALS .X ± .05 .XX ± .01 .XXX ± .005 | | | | | | | 5052-H32 | | | | |
| FRACTIONS ± 1/64 ANGLES ± 0° 30' | | | | | | | ALUMINUM | | | | |
| TOLERANCES | | | | | | | YELLOW IRIDITE | | | | |
| CODE | | | | | | | 5902 | | | | |
| | | | | | | | FINISH & SPEC. NO. | | | | |
| | | | | | | | DRAWN | | | | |
| | | | | | | | HEAT TREAT. SPEC. | | | | |
| | | | | | | | CHECKED | | | | |
| | | | | | | | FINAL APPROVAL | | | | |
| | | | | | | | ELEC. DES. APP. | | | | |
| | | | | | | | MECH. DES. APP. | | | | |
| | | | | | | | MS4149 | | | | |
| | | | | | | | Ø | | | | |

| | | | | |
|---------------|---------|------------|--------|---|
| REQ. PER UNIT | USED ON | | MS4153 | Ø |
| | MODEL | ASS'Y. NO. | | |
| 1 | TPC-11 | | 6-7-65 | |



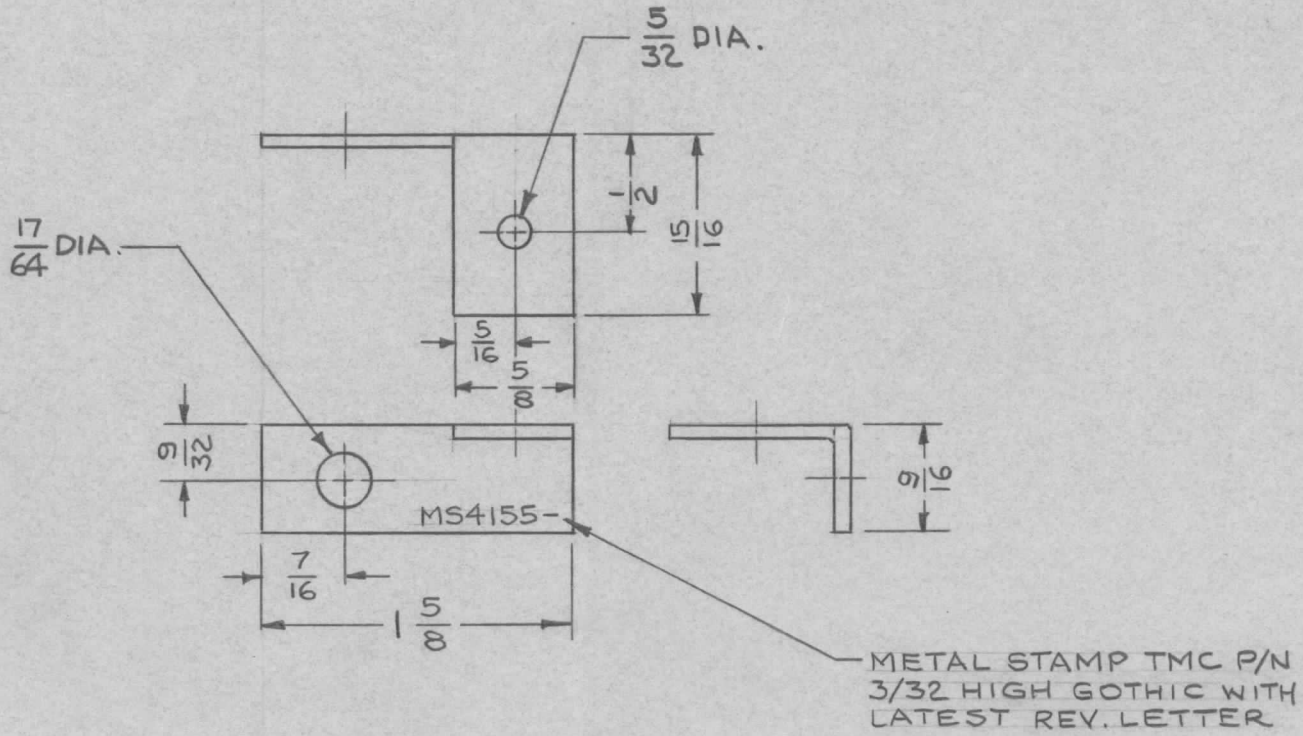
MATERIAL:
 .051 ALUMINUM, PERFORATED,
 .070 DIA HOLES, STAGGERED
 5052-H32
 FINISH:
 S404 yellow IRIDITE
 S197 BLACK, SEMI-GLOSS

| SYM | DESCRIPTION | DATE | CH. NO. | DRAFTS | CHECKER | ENG. APP. | REQ. ITEM | PART NO. | DESCRIPTION | SYMBOL | |
|---|----------------------------------|---|---------|--------|---------|-----------|--------------------|-------------------|-----------------|--|----------------|
| Ø | ORIGINAL RELEASE FOR PRODUCTION. | 6-7-65 | # | JDE | | | .051 | | Johnson | | |
| | | | | | | | STOCK SIZE | | | | |
| | | | | | | | SEE NOTE | | | THE TECHNICAL MATERIEL CORP. MAMARONECK, NEW YORK | |
| | | | | | | | MATERIAL | | | GRILLE, SPEAKER | |
| UNLESS OTHERWISE SPECIFIED DIMENSIONS ARE IN INCHES AND INCLUDE CHEMICALLY APPLIED OR PLATED FINISHES | | SCALE | # | | | | | | | | |
| DECIMALS .X ± .05 .XX ± .01 .XXX ± .005 | TOLERANCES | FRACTIONS ± 1/64 ANGLES ± 0° 30' | CODE | A | | | | | | | |
| | | | | | | | TYPE & TEMPER | HEAT TREAT. SPEC. | DRAWN | CHECKED | FINAL APPROVAL |
| | | | | | | | SEE NOTE | | | | |
| | | | | | | | FINISH & SPEC. NO. | ELEC. DES. APP. | MECH. DES. APP. | | |
| | | | | | | | | | | MS4153 | Ø |

UNLESS OTHERWISE SPECIFIED:

1. USE MATERIAL THICKNESS FOR MAXIMUM RADIUS ON ALL BENDS
2. ALL ANGULAR BENDS 90 DEGREES
3. REMOVE ALL BURRS AND SHARP EDGES

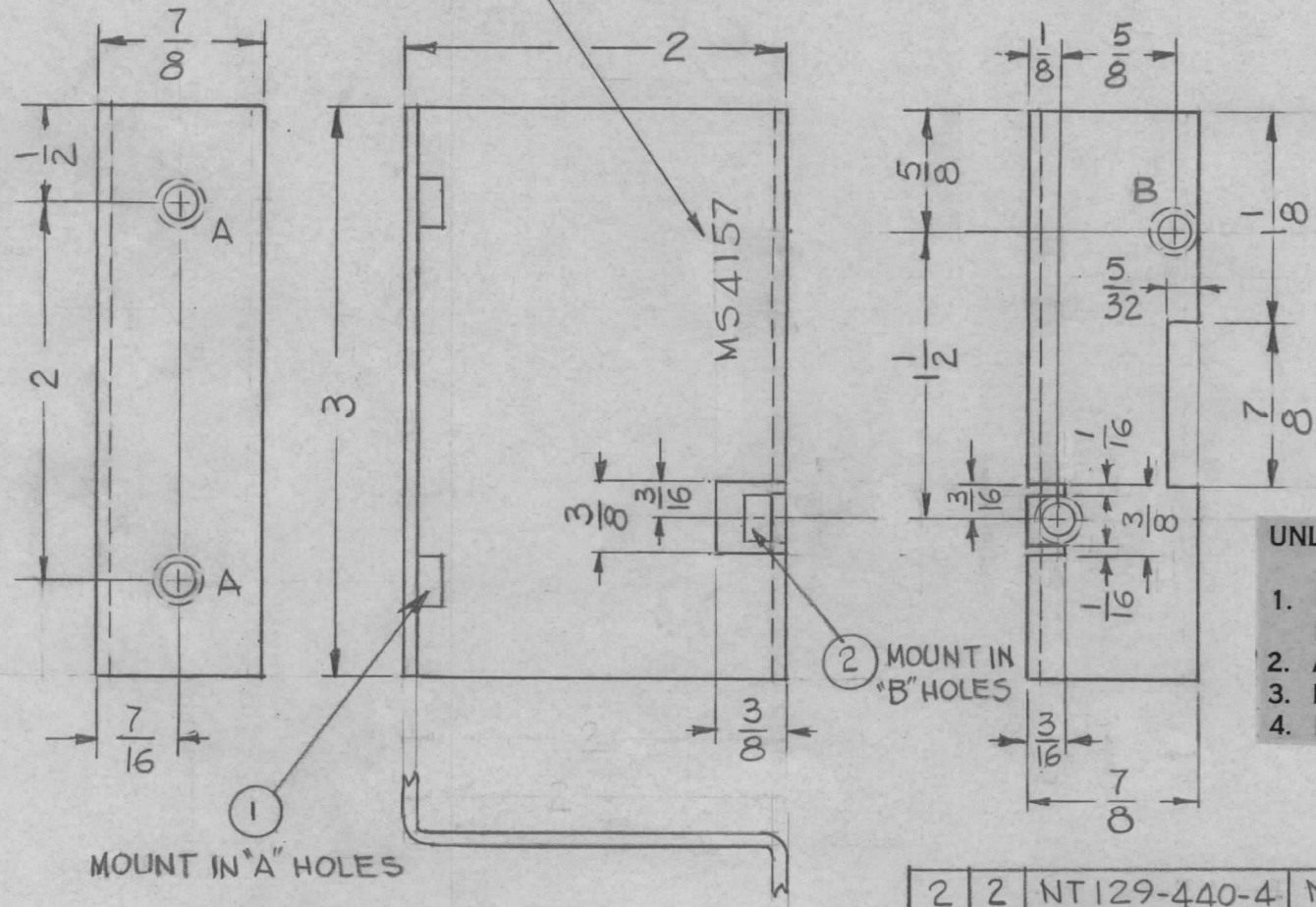
| | | | | | |
|---------------|------------|------------|----------|--------|---|
| REQ. PER UNIT | USED ON | | | MS4155 | Ø |
| | MODEL | ASS'Y. NO. | DATE | | |
| 1 | TER3500-50 | | 11.23.64 | | |



| | | | | | | | | | | | | |
|---|--|-----------|--|------|--|--|--------------------|-------------------|------------------------------|-----------------|----------------|--|
| | | | | | | | REQ. ITEM | PART NO. | BUDETTI | DESCRIPTION | SYMBOL | |
| | | | | | | | .051 THK | | THE TECHNICAL MATERIEL CORP. | | | |
| | | | | | | | STOCK SIZE | | MAMARONECK, NEW YORK | | | |
| | | | | | | | ALUMINUM | | BRACKET, MTG., CAPACITOR | | | |
| | | | | | | | MATERIAL | | | | | |
| | | | | | | | 5052-H32 | | bs | @ | RC | |
| | | | | | | | TYPE & TEMPER | HEAT TREAT. SPEC. | DRAWN | CHECKED | FINAL APPROVAL | |
| | | | | | | | S404 YELL. IRIDITE | | DB | JP | MS4155 Ø | |
| | | | | | | | FINISH & SPEC. NO. | | ELEC. DES. APP. | MECH. DES. APP. | | |
| UNLESS OTHERWISE SPECIFIED DIMENSIONS ARE IN INCHES AND INCLUDE CHEMICALLY APPLIED OR PLATED FINISHES | | | | | | | SCALE | | | | | |
| | | | | | | | 1:1 | | | | | |
| DECIMALS | | FRACTIONS | | CODE | | | | | | | | |
| .X ± .05 | | ± 1/64 | | A | | | | | | | | |
| .XX ± .01 | | ANGLES | | | | | | | | | | |
| .XXX ± .005 | | ± 0° 30' | | | | | | | | | | |
| TOLERANCES | | | | | | | | | | | | |

METAL STAMP TMC PART NO. 1/8 HIGH GOTHIC.
WITH LATEST REVISION LETTER

| | | | | |
|---------------|---------|------------|--------|----------|
| REQ. PER UNIT | USED ON | | | MS4157 Ø |
| | MODEL | ASS'Y. NO. | DATE | |
| | RAK-106 | | 1-4-54 | |



| HOLE | DESCRIPTION | REQ |
|------|-----------------|-----|
| A | .191 - .194 DIA | 2 |
| B | .161 - .164 DIA | 2 |

- UNLESS OTHERWISE SPECIFIED:
1. USE MATERIAL THICKNESS FOR MAXIMUM RADIUS ON ALL BENDS
 2. ALL ANGULAR BENDS 90 DEGREES
 3. REMOVE ALL BURRS AND SHARP EDGES
 4. MOUNT INSERTS AFTER FINISHING

| | | | | |
|------|------|-------------|--------------------|--------|
| 2 | 2 | NT129-440-4 | NUT, PLAIN, SPLINE | B |
| 2 | 1 | NT129-632-4 | NUT, PLAIN, SPLINE | A |
| REQ. | ITEM | PART NO. | DESCRIPTION | SYMBOL |
| | | | O. POSE | |

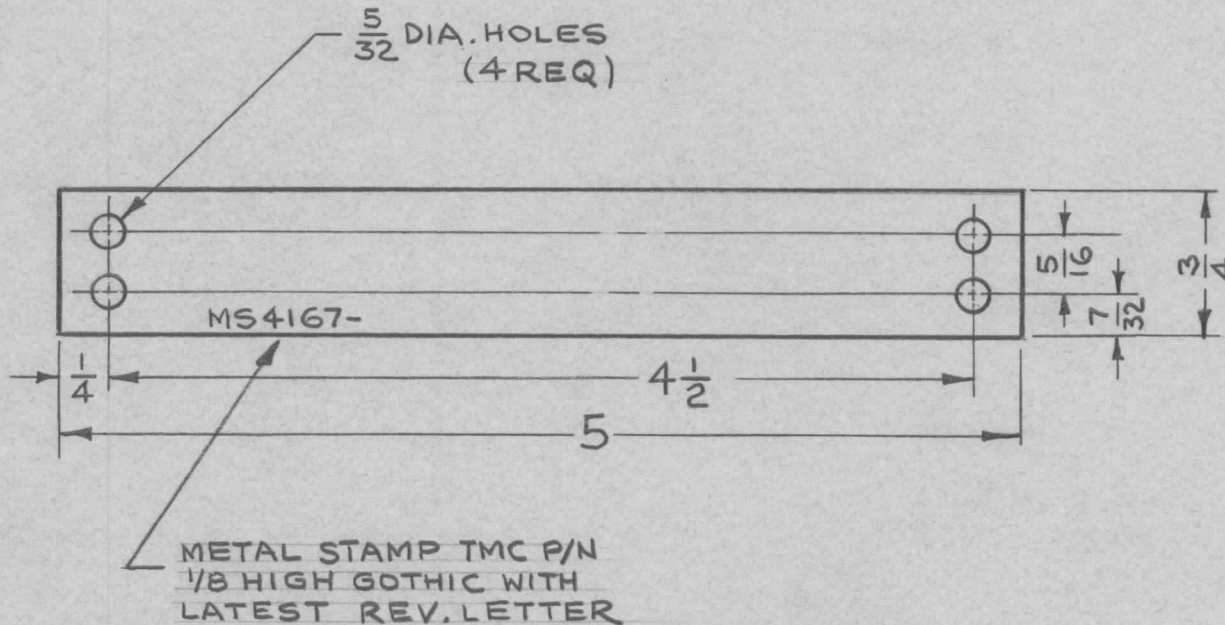
| | | | | | | |
|---|---------------------------------|---|-----------|--------|---------|-----------|
| Ø | ORIGINAL RELEASE FOR PRODUCTION | 12865 | Ø | 92 | | |
| X | EXPER. RELEASE | 1-4-64 | | | | |
| SYM | DESCRIPTION | DATE | CH. NO. | DRAFTS | CHECKER | ENG. APP. |
| UNLESS OTHERWISE SPECIFIED DIMENSIONS ARE IN INCHES AND INCLUDE CHEMICALLY APPLIED OR PLATED FINISHES | | SCALE 1:1 | | | | |
| DECIMALS .X ± .05 .XX ± .01 .XXX ± .005 | TOLERANCES | FRACTIONS ± 1/64 ANGLES ± 0° 30' | CODE A | | | |

| | | | | |
|------------------|--------------------|--|-----------------|-----------------|
| .064 THK | | THE TECHNICAL MATERIEL CORP. MAMARONECK, NEW YORK | | |
| STOCK SIZE | | BRACKET, MTG. RELAY | | |
| ALUMINUM | | MATERIAL | | |
| 5052-H32 | TYPE & TEMPER | HEAT TREAT. SPEC. | DRAWN | CHECKED |
| 5404 YEL IRIDITE | FINISH & SPEC. NO. | | ELEC. DES. APP. | MECH. DES. APP. |
| | | G.D.L. [Signature] [Signature] | | |
| | | FINAL APPROVAL | | |
| | | MS4157 Ø | | |

NOTE:

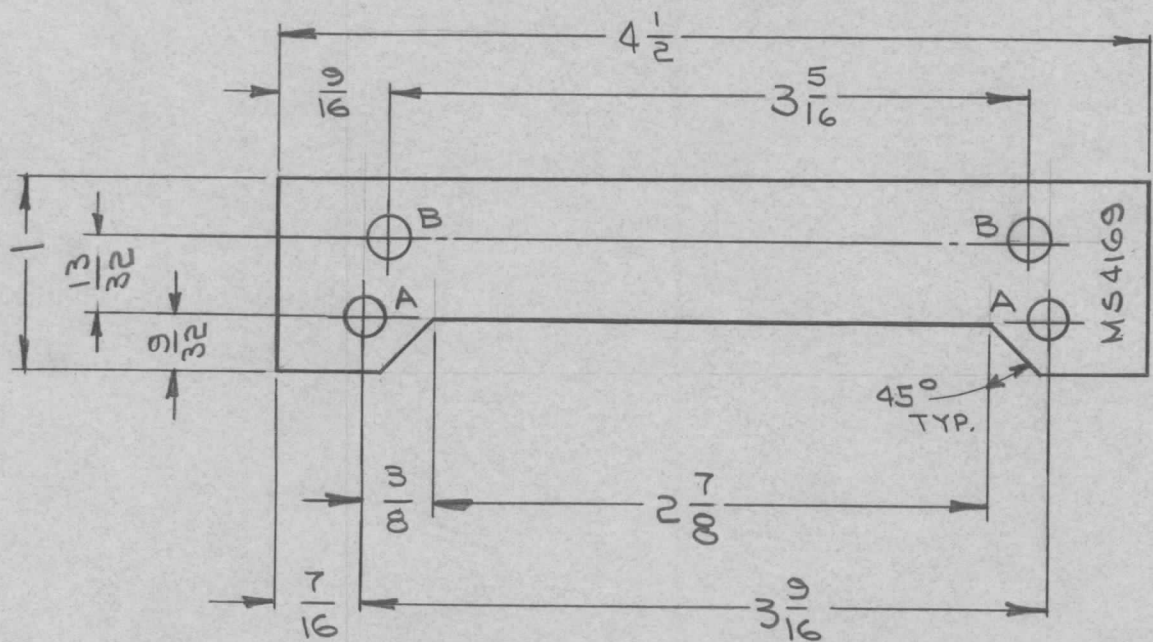
REMOVE ALL BURRS AND SHARP EDGES

| | | | | |
|---------------|---------|------------|----------|--------------------|
| REQ. PER UNIT | USED ON | | | MS4167 \emptyset |
| | MODEL | ASS'Y. NO. | DATE | |
| 1 | TTR-10 | AX 418 | 10.28.64 | |



| REQ. ITEM | PART NO. | O. POSE | DESCRIPTION | SYMBOL |
|---|--------------------|---|--|--------------------|
| | .064 THK | | THE TECHNICAL MATERIEL CORP. MAMARONECK, NEW YORK | |
| | STOCK SIZE | | COVER, TERM. BD CUTOUT | |
| | ALUMINUM | | | |
| | MATERIAL | | | |
| | 5052-H32 | hwb | @ 12-23-64 | RJC |
| | TYPE & TEMPER | HEAT TREAT. SPEC. | DRAWN | CHECKED |
| | S404 YELL. IRIDITE | Q.D. 12-23-64 | | FINAL APPROVAL |
| | FINISH & SPEC. NO. | ELEC. DES. APP. | MECH. DES. APP. | MS4167 \emptyset |
| UNLESS OTHERWISE SPECIFIED DIMENSIONS ARE IN INCHES AND INCLUDE CHEMICALLY APPLIED OR PLATED FINISHES | | SCALE 1:1 | | |
| DECIMALS .X \pm .05 .XX \pm .01 .XXX \pm .005 | TOLERANCES | FRACTIONS \pm 1/64 ANGLES \pm 0° 30' | CODE A | |

| | | | | |
|---------------|----------|------------|---------|----------|
| REQ. PER UNIT | USED ON | | | MS4169 Ø |
| | MODEL | ASS'Y. NO. | DATE | |
| 2 | BSP1,2,3 | AZ102 | 12-8-64 | |



METAL STAMP TMC PART NO. 1/8 HIGH GOTHIC WITH LATEST REVISION LETTER

| HOLE | DESCRIPTION | REQ |
|------|-------------|-----|
| A | .189 DIA. | 2 |
| B | .201 DIA. | 2 |

NOTE:
REMOVE ALL BURRS & SHARP EDGES

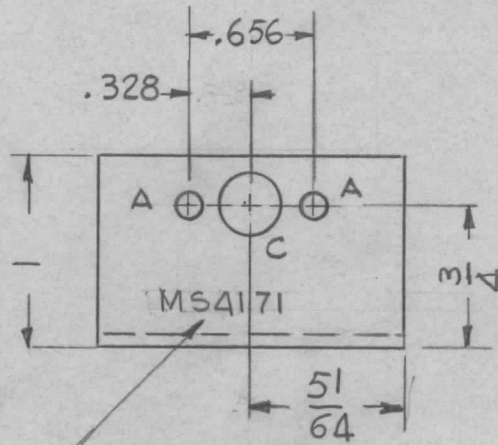
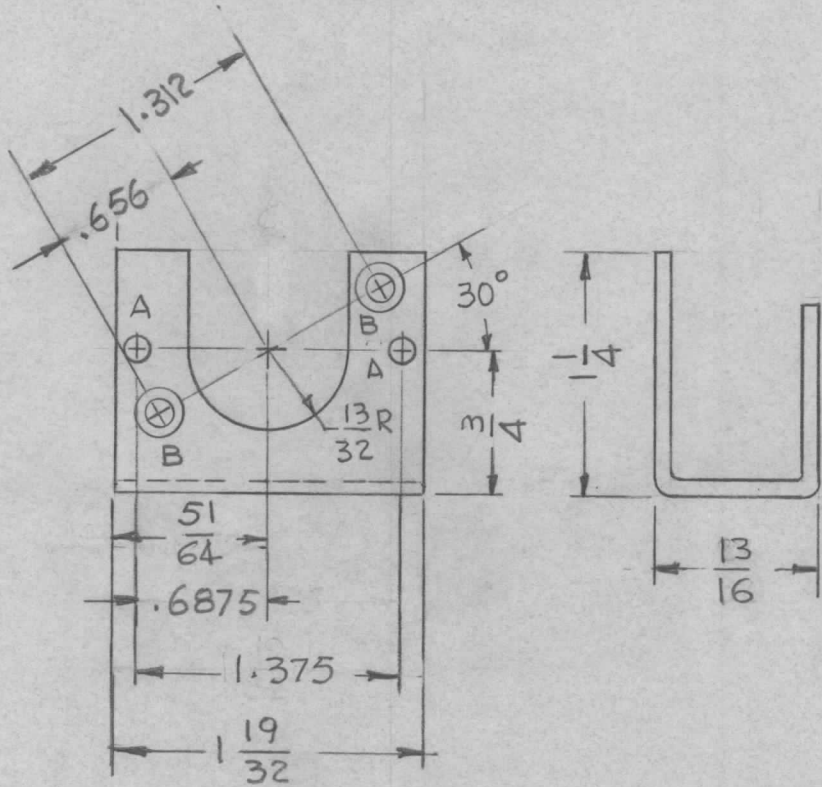
| | | | | | |
|---|------------|---|-----------|--------------------------------------|-------------------|
| REQ. ITEM | PART NO. | R HAY | | DESCRIPTION | SYMBOL |
| | .064 | | | THE TECHNICAL MATERIEL CORP. | |
| | STOCK SIZE | | | MAMARONECK. | NEW YORK |
| | ALUMINIUM | | | PLATE, ADAPTER | |
| | MATERIAL | | | | |
| UNLESS OTHERWISE SPECIFIED DIMENSIONS ARE IN INCHES AND INCLUDE CHEMICALLY APPLIED OR PLATED FINISHES | SCALE | 1:1 | | 3052-H32 | |
| DECIMALS .X ± .05 .XX ± .01 .XXX ± .005 | TOLERANCES | FRACTIONS ± 1/64 ANGLES ± 0° 30' | CODE A | TYPE & TEMPER 5404 YELLOW IRIDIUM | HEAT TREAT. SPEC. |
| | | | | DRAWN | CHECKED |
| | | | | FINAL APPROVAL | |
| | | | | ELEC. DES. APP. | MECH. DES. APP. |
| | | | | MS4169 Ø | |

| HOLE | DESCRIPTION | REQ. |
|------|--|------|
| A | 1/8 DIA. | 4 |
| B | .120 DIA. & C'SINK 82° TO .230 DIA. | 2 |
| C | 5/16 DIA | 1 |

| REQ. PER UNIT | USED ON | | | MS4171 | Ø |
|---------------|---------|------------|----------|--------|---|
| | MODEL | ASS'Y. NO. | DATE | | |
| 1 | PFCB-1 | | 12-24-64 | | |

UNLESS OTHERWISE SPECIFIED:

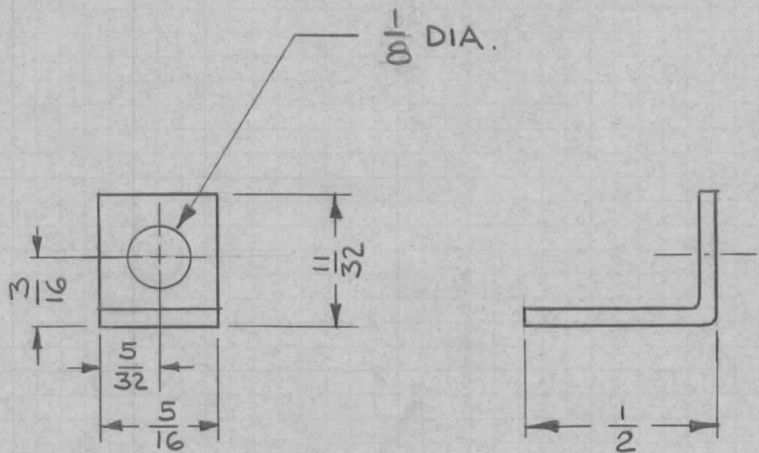
- USE MATERIAL THICKNESS FOR MAXIMUM RADIUS ON ALL BENDS
- ALL ANGULAR BENDS 90 DEGREES
- REMOVE ALL BURRS AND SHARP EDGES



METAL STAMP TMC P/NO
1/8 HIGH GOTHIC WITH
LATEST REV. LETTER

| SYM | DESCRIPTION | DATE | CH. NO. | DRAFTS | CHECKER | ENG. APP. | REQ. ITEM | PART NO. | O-POSE DESCRIPTION | SYMBOL | | |
|---|---------------------------------|------------|---------|---|---------|-------------------|--------------------|-------------------|--|-----------------|---------|----------------|
| Ø | ORIGINAL RELEASE FOR PRODUCTION | 5.5.65 | Ø | 9L | | | .080 THK | | THE TECHNICAL MATERIEL CORP. MAMARONECK. NEW YORK | Ø | | |
| X | EXPER. RELEASE | 12-2464 | | C.D.L. | | | STOCK SIZE | | | | | |
| | | | | | | | ALUMINUM | BRACKET, VERNIER | | | | |
| | | | | | | | | | DOPPLER, CONNECTOR | | | |
| UNLESS OTHERWISE SPECIFIED DIMENSIONS ARE IN INCHES AND INCLUDE CHEMICALLY APPLIED OR PLATED FINISHES | | | | | | | SCALE | 1:1 | | | | |
| DECIMALS .X ± .05 .XX ± .01 .XXX ± .005 | | TOLERANCES | | FRACTIONS ± 1/64 ANGLES ± 0° 30' | | CODE A | 5052-H32 | | G.D.L. ¹²⁻²⁴⁻⁶⁴ | | | |
| | | | | | | TYPE & TEMPER | | HEAT TREAT. SPEC. | DRAWN | | CHECKED | FINAL APPROVAL |
| | | | | | | S404 YEL. IRIDITE | | | | | | MS4171 |
| | | | | | | | FINISH & SPEC. NO. | | ELEC. DES. APP. | MECH. DES. APP. | Ø | |

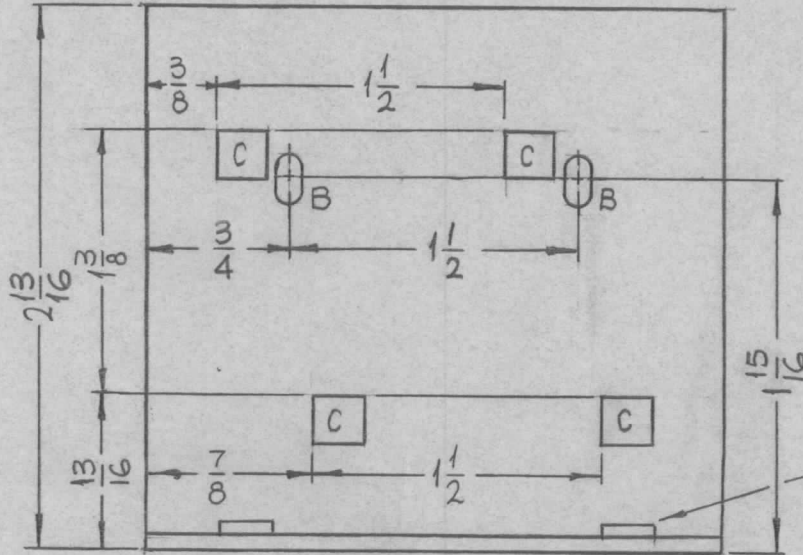
| | | | | | |
|---------------|---------|------------|----------|--------|---|
| REQ. PER UNIT | USED ON | | | MS4173 | ⊘ |
| | MODEL | ASS'Y. NO. | DATE | | |
| 2 | LPFC-1 | | 12.11.64 | | |



DWG. NO LONGER NECESSARY.
 INFORMATION ADDED TO
 MS4172

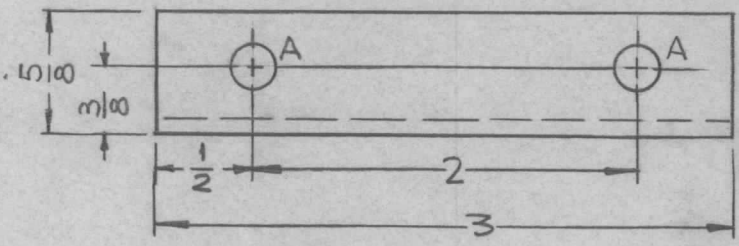
| SYM | DESCRIPTION | DATE | CH. NO. | DRAFTS | CHECKER | ENG. APP. | REQ. ITEM | PART NO. | DESCRIPTION | SYMBOL | | | |
|---|---------------------------------|---|----------------|-------------|---------|-----------|-----------|------------------------|---|-------------------|-------|---------|----------------|
| ⊘ | ORIGINAL RELEASE FOR PRODUCTION | 4-29-65 | ⊘ | SL | | | | | THE TECHNICAL MATERIEL CORP. MAMARONECK, NEW YORK SUPPORT BRACKET, CARD | | | | |
| X ₁ | DWG. ADDED TO MS 4172 | 1-12-65 | X ₁ | HLA | | | | .046 THK STOCK SIZE | | | | | |
| X | EXPER. RELEASE | 12.16.64 | X | LSB | | | | COPPER | | | | | |
| | | | | | | | | MATERIAL | | | | | |
| UNLESS OTHERWISE SPECIFIED DIMENSIONS ARE IN INCHES AND INCLUDE CHEMICALLY APPLIED OR PLATED FINISHES | | SCALE | | 2:1 | | | | | LSB @ 1-27-65 | MMW 4/27/65 | | | |
| DECIMALS .X ± .05 .XX ± .01 .XXX ± .005 | TOLERANCES | FRACTIONS ± 1/64 ANGLES ± 0° 30' | CODE A | CAL 5010-13 | | | | | TYPE & TEMPER | HEAT TREAT. SPEC. | DRAWN | CHECKED | FINAL APPROVAL |
| | | | | | | | | | | | | | MS4173 ⊘ |
| | | | | | | | | FINISH & SPEC. NO. | ELEC. DES. APP. | MECH. DES. APP. | | | |

| | | | | | |
|---------------|---------|------------|----------|--------|---|
| REQ. PER UNIT | USED ON | | | MS4181 | Ø |
| | MODEL | ASS'Y. NO. | DATE | | |
| 1 | APP-10 | | 12-21-64 | | |



| HOLES | DESCRIPTION | REQ. |
|-------|------------------|------|
| A | .221-.224 | 2 |
| B | 1/8 X 1/4 SLOT | 2 |
| C | 1/4 X 1/4 SQUARE | 4 |

① MOUNT IN ALL 1/8" HOLES.



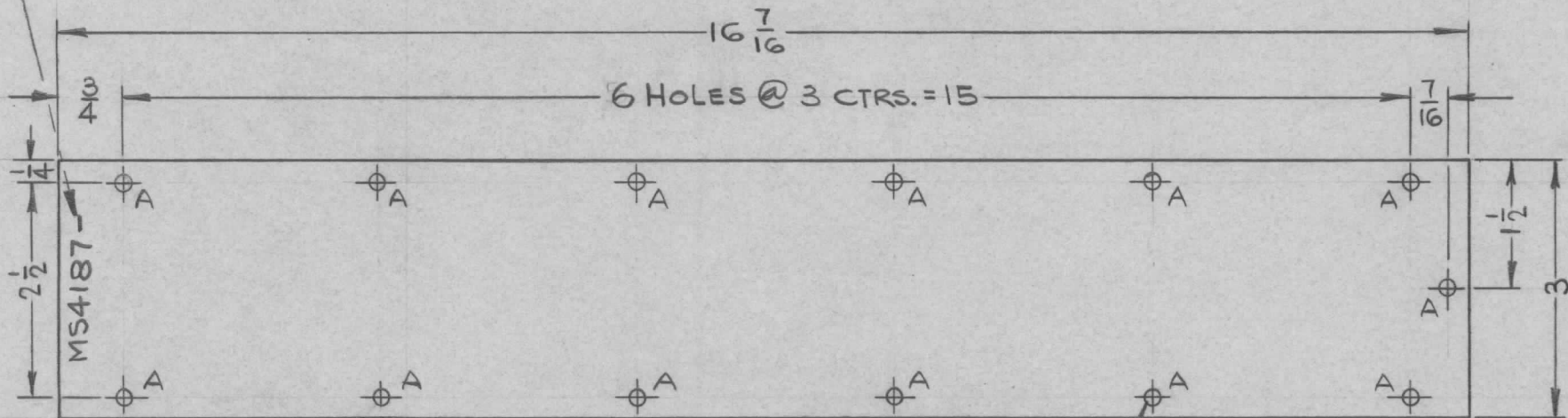
- UNLESS OTHERWISE SPECIFIED:
1. USE MATERIAL THICKNESS FOR MAXIMUM RADIUS ON ALL BENDS
 2. ALL ANGULAR BENDS 90 DEGREES
 3. REMOVE ALL BURRS AND SHARP EDGES
 4. MOUNT INSERTS AFTER FINISHING

| | | | | | | | | | | | | |
|---|-------------|--|--|--|--|--|---|-------------------|--|------------------------|----------------|--|
| | | | | | | | 2 | 1 | NT 129-832-4 | NUT, PLAIN, SPLINE | A | |
| | | | | | | | REQ. ITEM | PART NO. | | F. BUDETTI DESCRIPTION | SYMBOL | |
| | | | | | | | 3/32 THICK | | THE TECHNICAL MATERIEL CORP. MAMARONECK, NEW YORK | | | |
| | | | | | | | ALUMINUM | | PLATE, MTG, CIRCUIT BREAKER | | | |
| | | | | | | | MATERIAL | | | | | |
| | | | | | | | 5052-H32 | SRG | <i>SRG</i> | <i>RDC</i> | FINAL APPROVAL | |
| | | | | | | | TYPE & TEMPER | HEAT TREAT. SPEC. | DRAWN | CHECKED | | |
| | | | | | | | S404 YELLOW IRIDITE | | <i>SRG</i> | | | |
| | | | | | | | FINISH & SPEC. NO. | | ELEC. DES. APP. | MECH. DES. APP. | | |
| | | | | | | | | | MS4181 | | Ø | |
| UNLESS OTHERWISE SPECIFIED DIMENSIONS ARE IN INCHES AND INCLUDE CHEMICALLY APPLIED OR PLATED FINISHES | | | | | | | SCALE 1:1 | | | | | |
| DECIMALS .X ± .05 .XX ± .01 .XXX ± .005 | | | | | | | FRACTIONS ± 1/64 ANGLES ± 0° 30' | | CODE A | | | |
| TOLERANCES | | | | | | | | | | | | |
| ORIGINAL RELEASE FOR PRODUCTION 1-4-65 | | | | | | | Ø <i>SRG</i> | | | | | |
| EXP. RELEASE 12-18-64 | | | | | | | X <i>SRG</i> | | | | | |
| SYM | DESCRIPTION | | | | | | DATE | CH. NO. | DRAFTS | CHECKER | ENG. APP. | |

METAL STAMP TMC PART NO. 1/8 HIGH GOTHIC,
WITH LATEST REV. LETTER.

| REQ. PER UNIT | USED ON | | |
|---------------|---------|------------|----------|
| | MODEL | ASS'Y. NO. | DATE |
| 1 | HVRB-1 | | 12-23-64 |
| 1 | HVRC-1 | | 12-23-64 |

MS4187 \emptyset



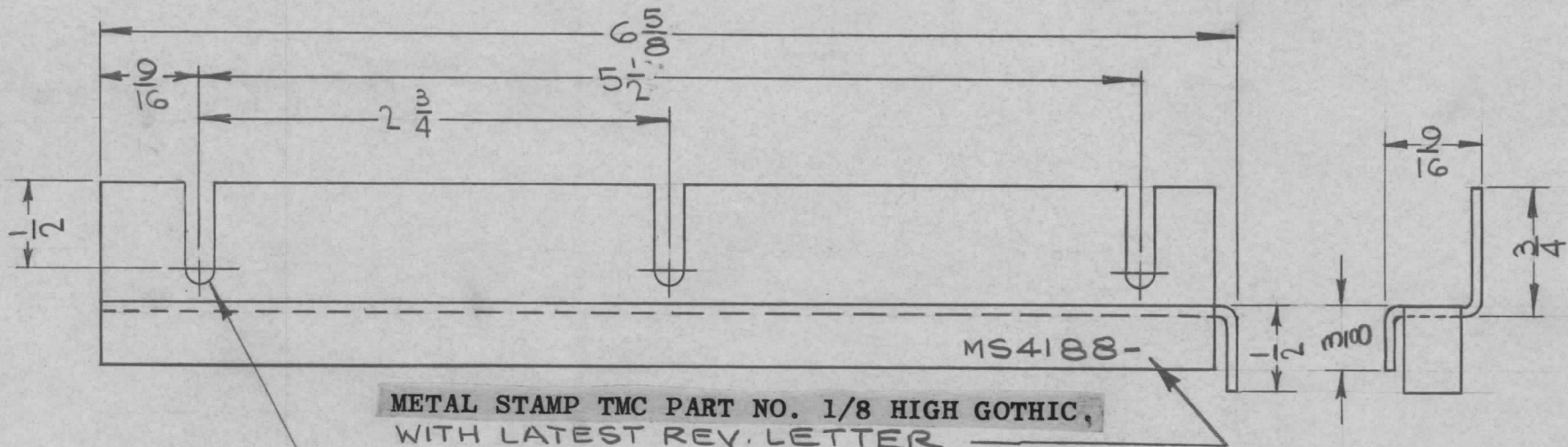
① MOUNT IN ALL "A" HOLES
AFTER FINISHING.

| HOLE | DESCRIPTION | REQ. |
|------|----------------|------|
| A | .191-.194 DIA. | 13 |

NT # 6 32 NT IN ALL HOLES
AFTER FINISH.

| REQ. | ITEM | PART NO. | DESCRIPTION | SYMBOL |
|---|------|---|------------------------------|--------------------|
| 13 | 1 | NT-129-632-4 | NUT, PLAIN, SPLINE | A |
| | | .064 THK. | THE TECHNICAL MATERIEL CORP. | |
| | | STOCK SIZE | MAMARONECK, NEW YORK | |
| | | ALUMINUM | PLATE, MTG. | |
| | | MATERIAL | AIR CHAMBER | |
| UNLESS OTHERWISE SPECIFIED DIMENSIONS ARE IN INCHES AND INCLUDE CHEMICALLY APPLIED OR PLATED FINISHES | | SCALE HALF SIZE | 5052 H32 | H.AUSTIN |
| DECIMALS .X ± .05 .XX ± .01 .XXX ± .005 | | FRACTIONS ± 1/64 ANGLES ± 0° 30' | TYPE & TEMPER | HEAT TREAT. SPEC. |
| TOLERANCES | | CODE | IRIDITE | FINISH & SPEC. NO. |
| | | | ELEC. DES. APP. | MECH. DES. APP. |
| | | | MS4187 \emptyset | |

| TMC PART NO. | DESCRIPTION | REQ. PER UNIT | USED ON | | MS4188 \emptyset |
|--------------|----------------------|---------------|---------|------------|--------------------|
| | | | MODEL | ASS'Y. NO. | |
| MS4188-1 | LEFT HAND, AS SHOWN | 1 | | | 12-22-64 |
| MS4188-2 | RIGHT HAND, OPPOSITE | | | | |



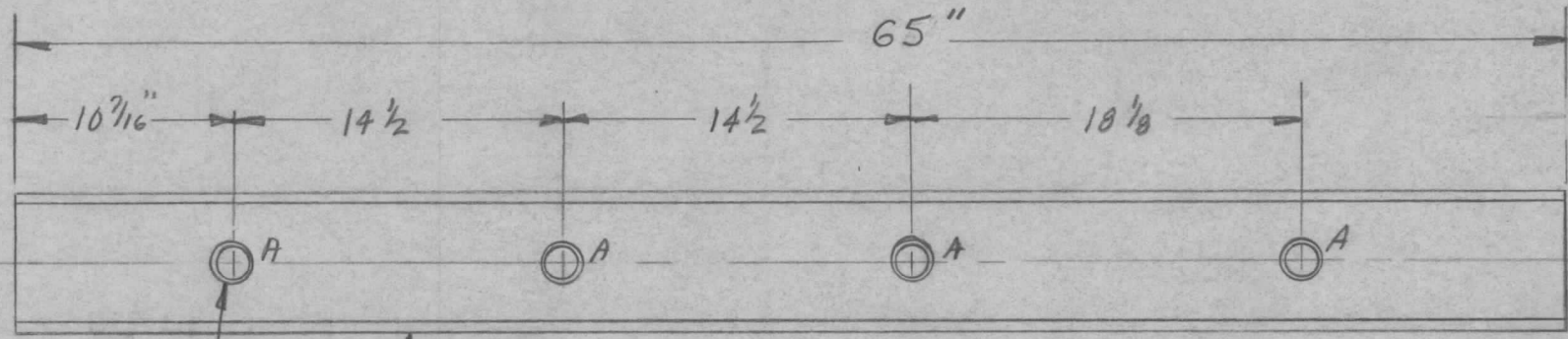
METAL STAMP TMC PART NO. 1/8 HIGH GOTHIC,
WITH LATEST REV. LETTER

11/64 D. - 3 REQ'D.

- UNLESS OTHERWISE SPECIFIED:
1. USE MATERIAL THICKNESS FOR MAXIMUM RADIUS ON ALL BENDS
 2. ALL ANGULAR BENDS 90 DEGREES
 3. REMOVE ALL BURRS AND SHARP EDGES

| SYM | DESCRIPTION | DATE | CH. NO. | DRAFTS | CHECKER | ENG. APP. | REQ. ITEM | PART NO. | DESCRIPTION | SYMBOL | |
|-----|---|------------|---|--------|---------|-----------|--------------------|-------------------|--|-------------|--------------------|
| | | | | | | | | .064 THK. | THE TECHNICAL MATERIEL CORP. MAMARONECK, NEW YORK | \emptyset | |
| | ORIGINAL RELEASE FOR PRODUCTION | 2.26.65 | | | JL. WS | | | STOCK SIZE | | | |
| X | EXPER. RELEASE | 12-22-64 | | | HLA | | | ALUMINUM | SUPPORT, FILTER | | |
| | | | | | | | | MATERIAL | | | |
| | UNLESS OTHERWISE SPECIFIED DIMENSIONS ARE IN INCHES AND INCLUDE CHEMICALLY APPLIED OR PLATED FINISHES | SCALE | 1:1 | | | | | 5052-H32 | H. AUSTIN | JCS RDC | |
| | | | | | | | TYPE & TEMPER | HEAT TREAT. SPEC. | DRAWN | CHECKED | FINAL APPROVAL |
| | DECIMALS .X \pm .05 .XX \pm .01 .XXX \pm .005 | TOLERANCES | FRACTIONS \pm 1/64 ANGLES \pm 0° 30' | CODE | | | S404 IRIDITE | | JCS | JCS | MS4188 \emptyset |
| | | | | | | | FINISH & SPEC. NO. | ELEC. DES. APP. | MECH. DES. APP. | | |

| | | | | |
|---------------|---------|------------|------|--------------------|
| REQ. PER UNIT | USED ON | | | MS4190 \emptyset |
| | MODEL | ASS'Y. NO. | DATE | |
| 1 | RAK20B | A4075 | | |



②
①

A-.191-.194 DIA. (+) REQ.

MOUNT ITEM 2 AS SHOWN IN "A" HOLES

| | | | | | |
|------------------------------|---|-------------|--|-------------------|---------------------------------|
| 4 | 2 | NT129-632-3 | NUT, ROUND, SWAGE TYPE | | |
| 60 | 1 | PO 160 | CHANNEL, STRIP, AC | | |
| REQ. ITEM | PART NO. | | B.NAP | DESCRIPTION | SYMBOL |
| STOCK SIZE | | | THE TECHNICAL MATERIEL CORP. MAMARONECK, NEW YORK | | |
| MATERIAL | | | CHANNEL, STRIP, AC | | |
| TOLERANCES | | SCALE: # | B.NAP | 8/18/65 | FINAL APPROVAL |
| DEC. DIM. \pm | MAXIMUM ALLOWABLE TOLERANCES HAVE BEEN DETERMINED AND ANY DEVIATIONS WILL BE CAUSE FOR REJECTION. | | TYPE & TEMPER | HEAT TREAT. SPEC. | |
| FRAC. DIM. \pm $\sqrt{64}$ | REMOVE ALL BURRS AND SHARP EDGES | | FINISH & SPEC. NO. | | ELEC. DES. APP. MECH. DES. APP. |
| ANGULAR DIM. \pm | | | | | MS4190 \emptyset |

| | | | | | | | | |
|-------|------|---------------------------------|--------------|---------|---------|--------|---------|-----------|
| ISSUE | ITEM | ORIGINAL RELEASE FOR PRODUCTION | CHANGED FROM | DATE | CH. NO. | DRAFTS | CHECKER | ENG. APP. |
| | | | | 9/23/65 | | | | |