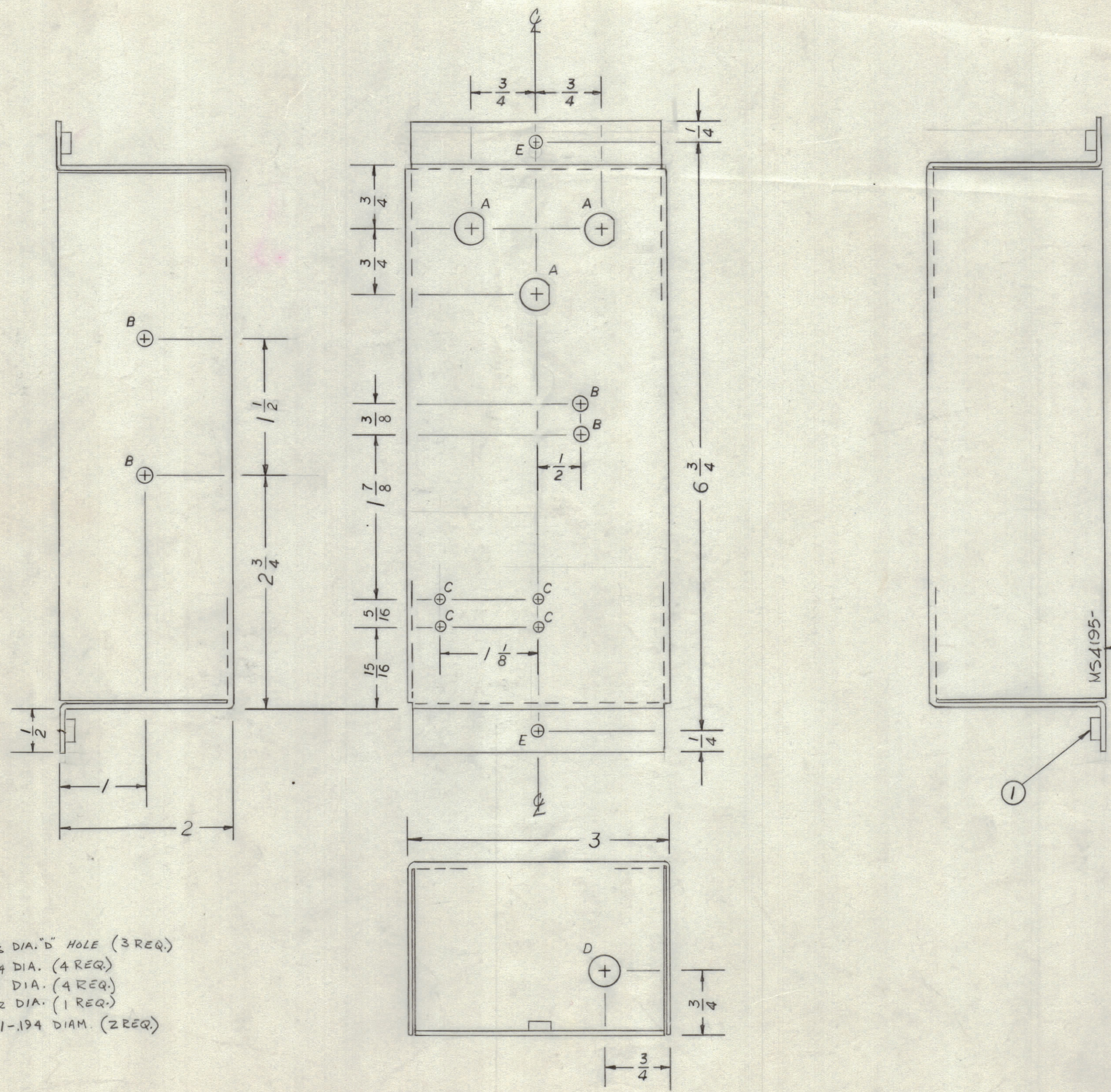


REVISIONS							
ZONE	SYM	DESCRIPTION	DATE	E.M.N. NO.	DRAFT	CHKD	APPD
X		EXPERIMENTAL RELEASE	5/1/65		MS		
		ORIGINAL RELEASE FOR PRODUCTION	10/4/65		MS		



METAL STAMP TMC
PART NO. 1/8 HIGH
GOTHIC W/LATEST
REVISION LETTER

- A - 7/16 DIA. "D" HOLE (3 REQ.)
- B - 9/64 DIA. (4 REQ.)
- C - 1/8 DIA. (4 REQ.)
- D - 1/32 DIA. (1 REQ.)
- E - .191-.194 DIAM. (2 REQ.)

UNLESS OTHERWISE SPECIFIED:

1. USE MATERIAL THICKNESS FOR MAXIMUM RADIUS ON ALL BENDS
2. ALL ANGULAR BENDS 90 DEGREES
3. REMOVE ALL BURRS AND SHARP EDGES
4. MOUNT INSERTS AFTER FINISHING

REF. LD1887

REQ'D.	ITEM	PART NUMBER	DESCRIPTION	SYMBOL
2	1	NT129-632-4	NUT, PLAIN, SPLINE	E

STURMER LIST OF MATERIAL

MATERIAL .064 ALUM.	TITLE CHASSIS, RELAY
FINISH S404 YEL. IRIDITE	

UNLESS OTHERWISE SPECIFIED DIMENSIONS ARE IN INCHES AND INCLUDE CHEMICALLY APPLIED OR PLATED FINISHES	DRAWN M.H. STURMER DATE 4-24-65	FINAL APPROVAL DATE 10/4/65	DATE 10/4/65
DECIMALS .X ± .05 .XX ± .01 .XXX ± .005	TOLERANCES ± 1/64 ANGLES ± 0° 30'	ELECT. DES. DATE 10/4/65	REV. LTR. REV. LTR.

QTY./UNIT	MODEL USED ON	ASS'Y. NO.
1	RAK-22B	
1	RAK-9G-2	
1	RAK-55	

SCALE

THE CONTENTS OF THIS DRAWING ARE THE EXCLUSIVE PROPERTY OF THE TECHNICAL MATERIEL CORP. ITS UNAUTHORIZED USE OR REPRODUCTION IN WHOLE OR IN PART IS STRICTLY FORBIDDEN.

NOTES

MS4195