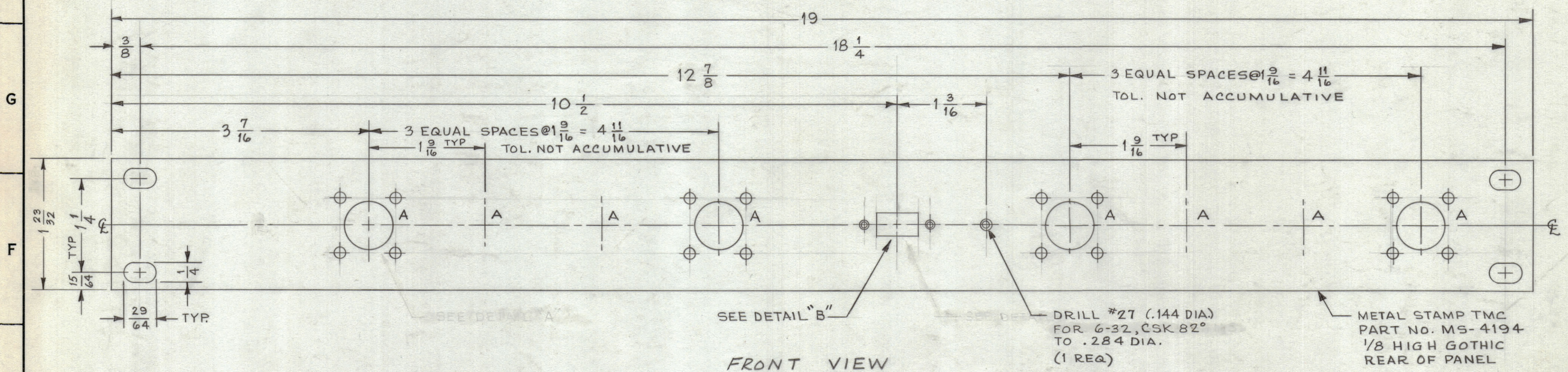
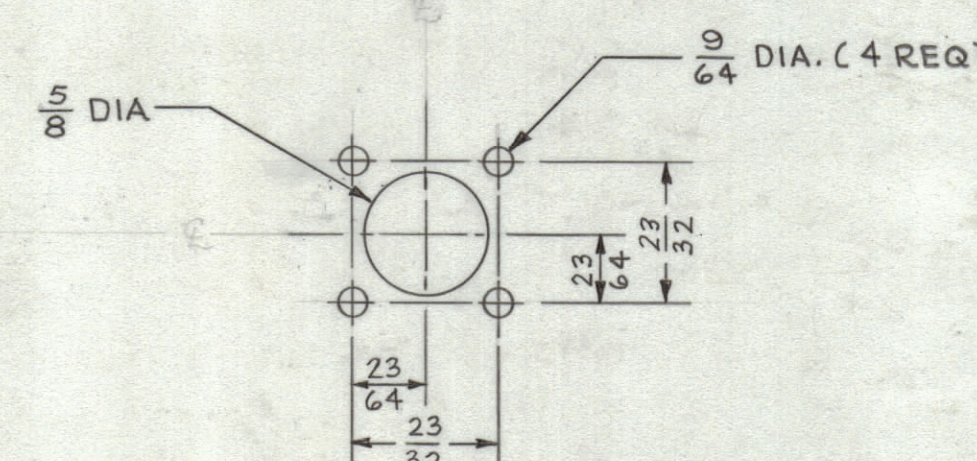


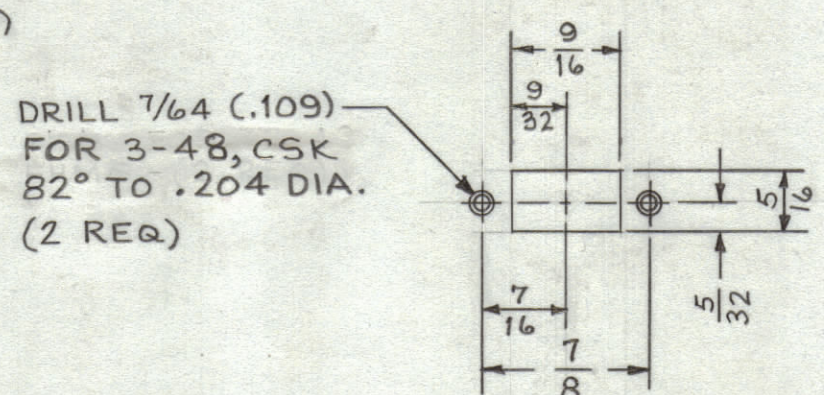
REVISIONS					
ZONE	SYM	DESCRIPTION	DATE	E.M.N. NO.	APPD
	2	ORIGINAL RELEASE FOR PRODUCTION	12/65		



FRONT VIEW



DETAIL "A"
(8 REQ)



DETAIL "B"
(1 REQ)

DRILL 7/64 (.109) FOR 3-48, CSK 82° TO .204 DIA. (2 REQ)

MACHINING:

- MILL ALL EDGES.
- HOLES MUST BE DRILLED, UNLESS OTHERWISE SPECIFIED.
- LATERAL BOW OF PANEL MUST BE KEPT TO .031 TOLERANCE.
- PANEL MUST BE FREE OF ALL MACHINING MARKS, GOUGES AND SCRATCHES. IF NECESSARY, SAND FRONT OF PANEL WITH NO. 120 GRIT SANDPAPER.

FINISH NOTES:

- S404 - IRIDITE 14-2 AL-COAT.
- PAINT, ENAMEL, AS INDICATED ON LD-1683.

NOTES

THE CONTENTS OF THIS DRAWING ARE THE EXCLUSIVE PROPERTY OF THE TECHNICAL MATERIEL CORP. ITS UNAUTHORIZED USE OR REPRODUCTION IN WHOLE OR IN PART IS STRICTLY FORBIDDEN.

REQ'D.	ITEM	PART NUMBER	DESCRIPTION	SYMBOL
MARTINENGO LIST OF MATERIAL				
MATERIAL		ALUMINUM-2023-T3 3/16 THICK		
FINISH		SEE NOTES		
TITLE		THE TECHNICAL MATERIEL CORP. MAMARONECK, NEW YORK PANEL, FRONT, MACHINING		
QTY./UNIT	MODEL USED ON	ASS'Y. NO.	DATE	DATE
1	QDP-PA-111-7		12-28-64	
SCALE	CODE		DATE	DATE
#			1-4-65	
UNLESS OTHERWISE SPECIFIED DIMENSIONS ARE IN INCHES AND INCLUDE CHEMICALLY APPLIED OR PLATED FINISHES		DRAWN		DATE
		M. TANTILLO		12-28-64
		CHECKED		DATE
		HDe		1-4-65
		ELECT. DES.		DATE
		MECH. DES.		DATE
		M		1-4-65
DECIMALS		FRACTIONS		
.X ± .05		± 1/64		
.XX ± .01		ANGLES		
.XXX ± .005		± 0° 30'		
TOLERANCES		DATE		
		1-4-65		
		SHEET		
		MS-4194		
		REV. LTR.		

MS-4194