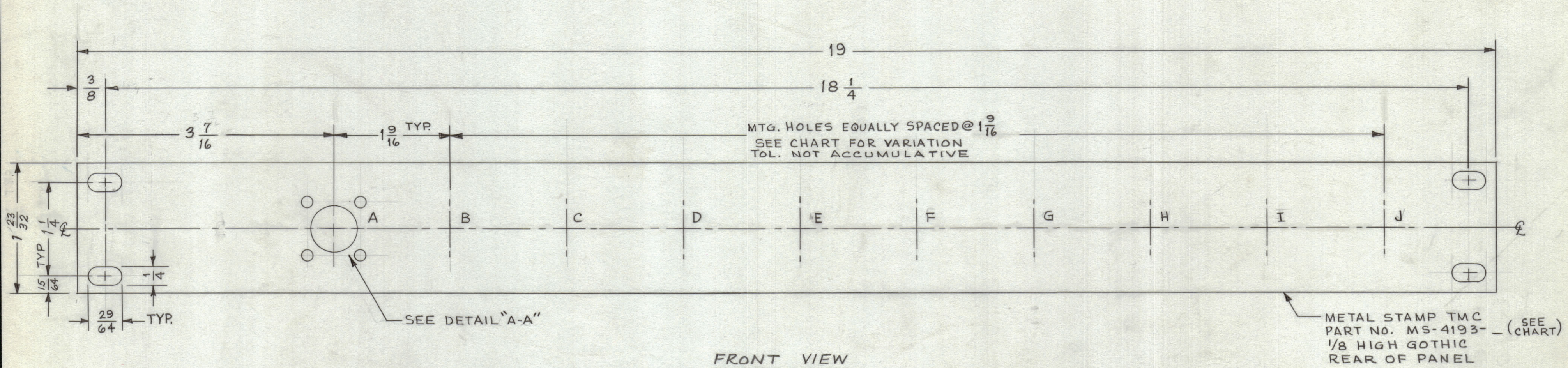
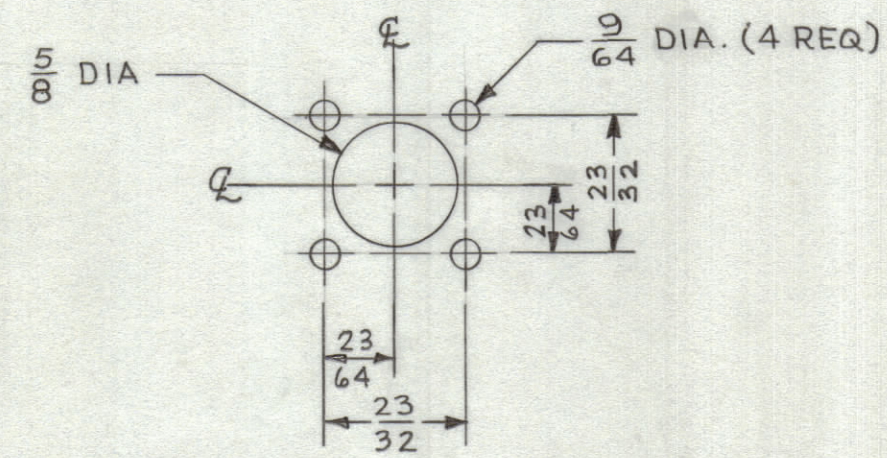


REVISIONS						
ZONE	SYM	DESCRIPTION	DATE	E.M.N. NO.	DRAFT	CHKD APPD
		ORIGINAL FOR PRODUCTION	1/4/65		1/00	



FRONT VIEW

TMC DWG NO.	DASH NO.	DETAL "A-A" REQUIRED	LD DWG NO.	DASH NO.	MODEL NO.	DASH NO.
MS-4193	1	A B C D E F G H I J	LD-1683	1	QDP-PA-111	1
MS-4193	2,3	A C D E F G H I J	LD-1683	2,3	QDP-PA-111	2,3
MS-4193	4,9,11	A B C D G H I J	LD-1683	4,9,11	QDP-PA-111	4,9,11
MS-4193	5	B C D E F G H I J	LD-1683	5	QDP-PA-111	5
MS-4193	6,10,12	A B C D E F G H I	LD-1683	6,10,12	QDP-PA-111	6,10,12
NOT APPLICABLE	-	SEE MS-4194	LD-1683	7	QDP-PA-111	7
MS-4193	8	A B C D F G H I J	LD-1683	8	QDP-PA-111	8



DETAIL "A-A"
(SEE CHART)

MS-4193

MACHINING:

- MILL ALL EDGES.
- HOLES MUST BE DRILLED, UNLESS OTHERWISE SPECIFIED.
- LATERAL BOW OF PANEL MUST BE KEPT TO .031 TOLERANCE.
- PANEL MUST BE FREE OF ALL MACHINING MARKS, GOUGES AND SCRATCHES. IF NECESSARY, SAND FRONT OF PANEL WITH NO. 120 GRIT SANDPAPER.

FINISH NOTES:

- S404 - IRIDITE 14-2 AL-COAT.
- PAINTE, ENAMEL, AS INDICATED ON LD-1683. AS INDICATED ON LD-1683.

NOTES

THE CONTENTS OF THIS DRAWING ARE THE EXCLUSIVE PROPERTY OF THE TECHNICAL MATERIEL CORP. ITS UNAUTHORIZED USE OR REPRODUCTION IN WHOLE OR IN PART IS STRICTLY FORBIDDEN.

REQ'D.	ITEM	PART NUMBER	DESCRIPTION	SYMBOL
MARTINENGO LIST OF MATERIAL				
MATERIAL		ALUMINUM 2023-T3 3/16 THICK	THE TECHNICAL MATERIEL CORP. MAMARONECK, NEW YORK	
FINISH		SEE NOTES	TITLE PANEL, FRONT, MACHINING	
UNLESS OTHERWISE SPECIFIED DIMENSIONS ARE IN INCHES AND INCLUDE CHEMICALLY APPLIED OR PLATED FINISHES		DRAWN M. TANTILLO	DATE 12-28-64	FINAL APPROVAL DATE
DECIMALS .X ± .05 .XX ± .01 .XXX ± .005		TOLERANCES	FRACTIONS ± 1/64 ANGLES ± 0° 30'	CHECKED DATE 1-4-65
QTY./UNIT SCALE		SEE CHART	MECH. DES. DATE 1-4-65	SHEET MS-4193
MODEL USED ON CODE		ASS'Y. NO.	REV. LTR.	