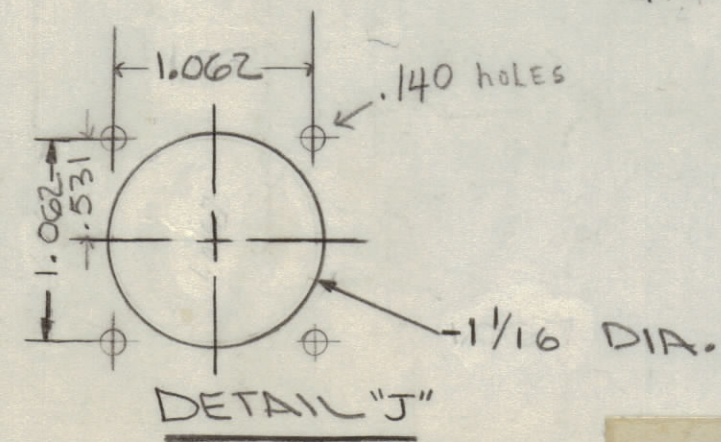
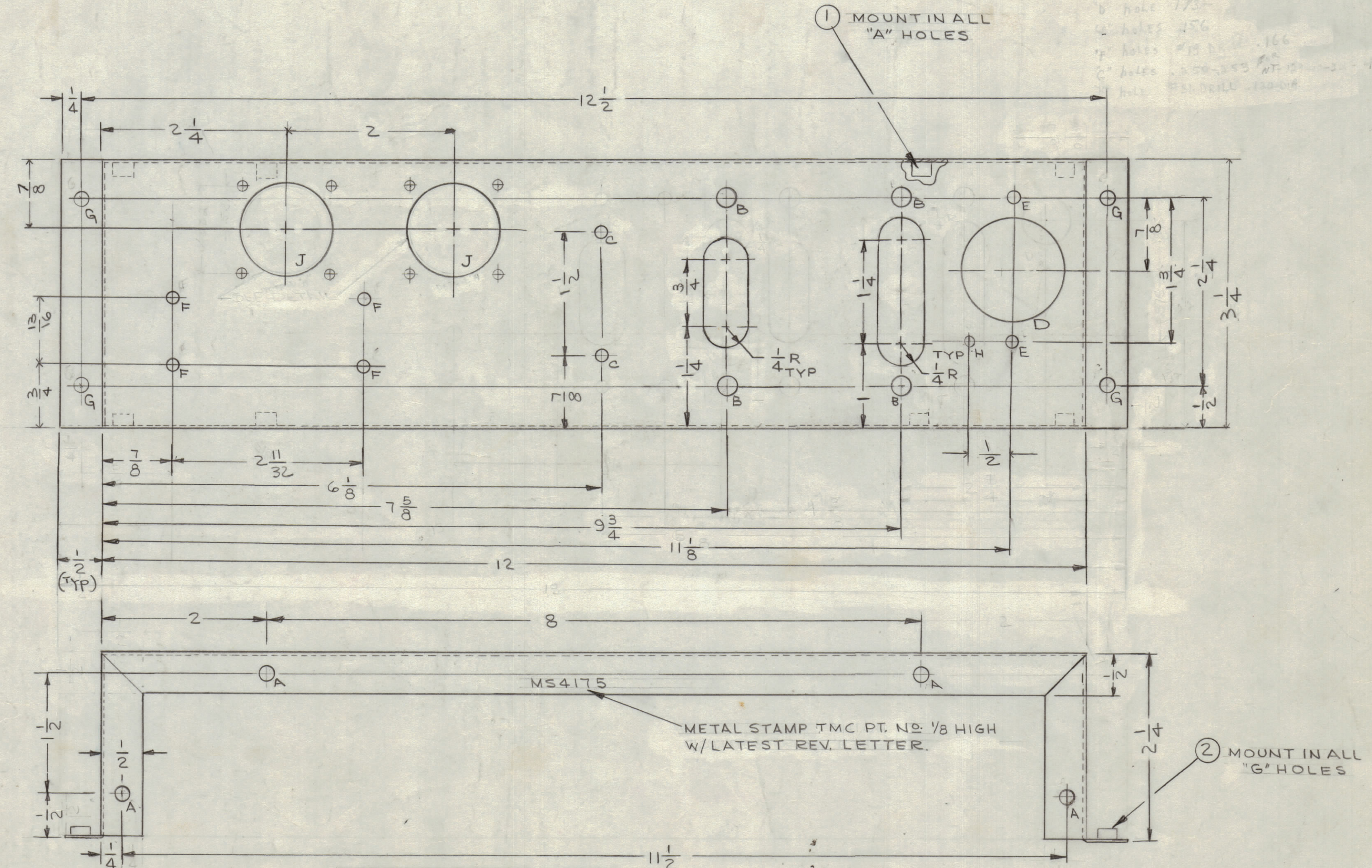


REVISIONS						
ZONE	SYM	DESCRIPTION	DATE	E.M.N. NO.	DRAFT	CHKD
		ORIGINAL RELEASE FOR PRODUCTION	10/25/65			
A		CLERICAL CHANGE	11/18/65	CC	JLV	JLV
B		G HOLES WERE .250-.252 DIA.	2-2-66	15693	JLV	JLV



HOLE	DESCRIPTION	REQ
A	.191-.194 DIA.	8
B	3/16 DIA.	4
C	5/32 DIA.	2
D	17/32 DIA.	1
E	.180 DIA.	2
F	#19 DRILL (.100)	4
G	.221-.224 DIA.	4
H	#31 DRILL (.120)	1
J	SEE DETAIL	2

UNLESS OTHERWISE SPECIFIED:

1. USE MATERIAL THICKNESS FOR MAXIMUM RADIUS ON ALL BENDS
2. ALL ANGULAR BENDS 90 DEGREES
3. REMOVE ALL BURRS AND SHARP EDGES
4. MOUNT INSERTS AFTER FINISHING

NOTES

1	TPCK-1	A4206
Q'TY./UNIT	MODEL USED ON	ASS'Y. NO.
SCALE	CODE	

THE CONTENTS OF THIS DRAWING ARE THE EXCLUSIVE PROPERTY OF THE TECHNICAL MATERIEL CORP. ITS UNAUTHORIZED USE OR REPRODUCTION IN WHOLE OR IN PART IS STRICTLY FORBIDDEN.

REF: LD1678

REQ'D.	ITEM	PART NUMBER	DESCRIPTION	SYMBOL
4	2	NT129-832-4	NUT PLAIN, SPLINED.	G
8	1	NT129-632-4	NUT PLAIN, SPLINED	A

LIST OF MATERIAL

MATERIAL .064 THK ALUMINUM 5052-H32	THE TECHNICAL MATERIEL CORP. MAMARONECK, NEW YORK			
FINISH S404 YEL IRIDITE	TITLE POWER SUPPLY CHASSIS			
DRAWN EANZA	DATE 12/2/65	FINAL APPROVAL JLV		DATE 12/2/65
CHECKED J.L.	DATE 9/28/65	ELECT. DES. DATE		MECH. DES. DATE
SHEET		MS4175 B		REV. LTR.

MS4175 B