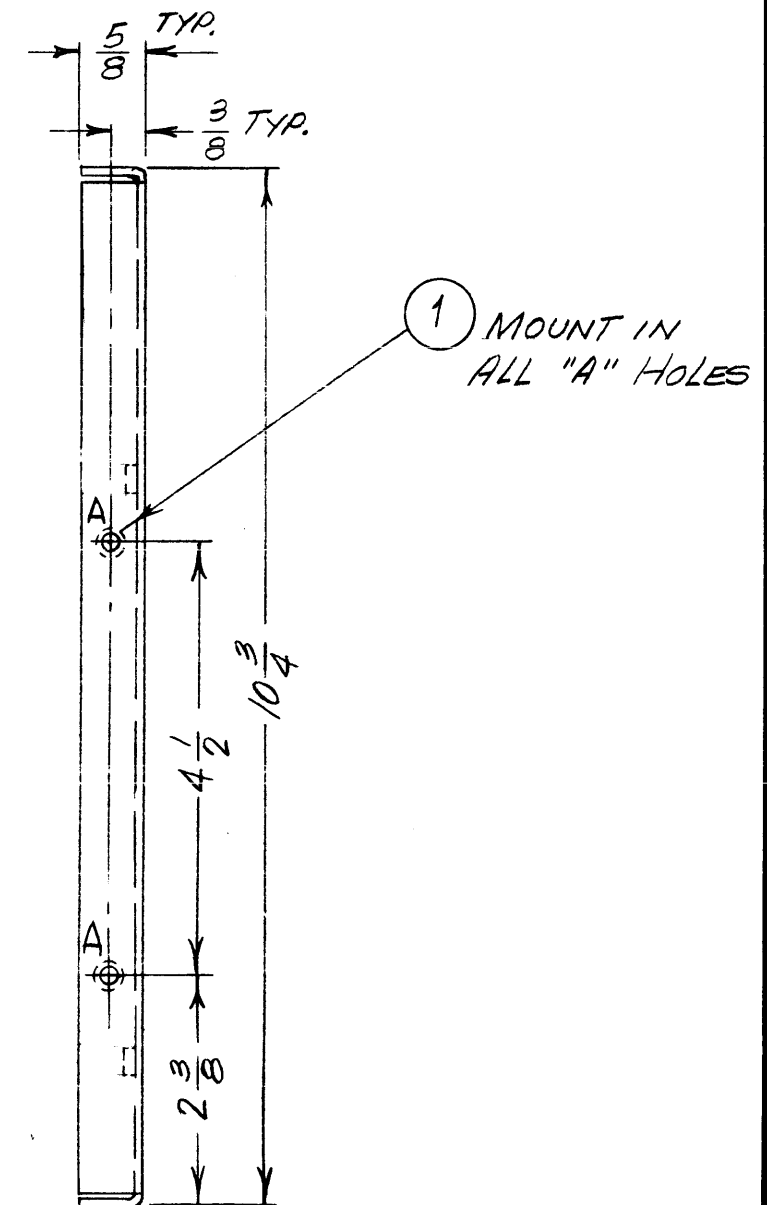
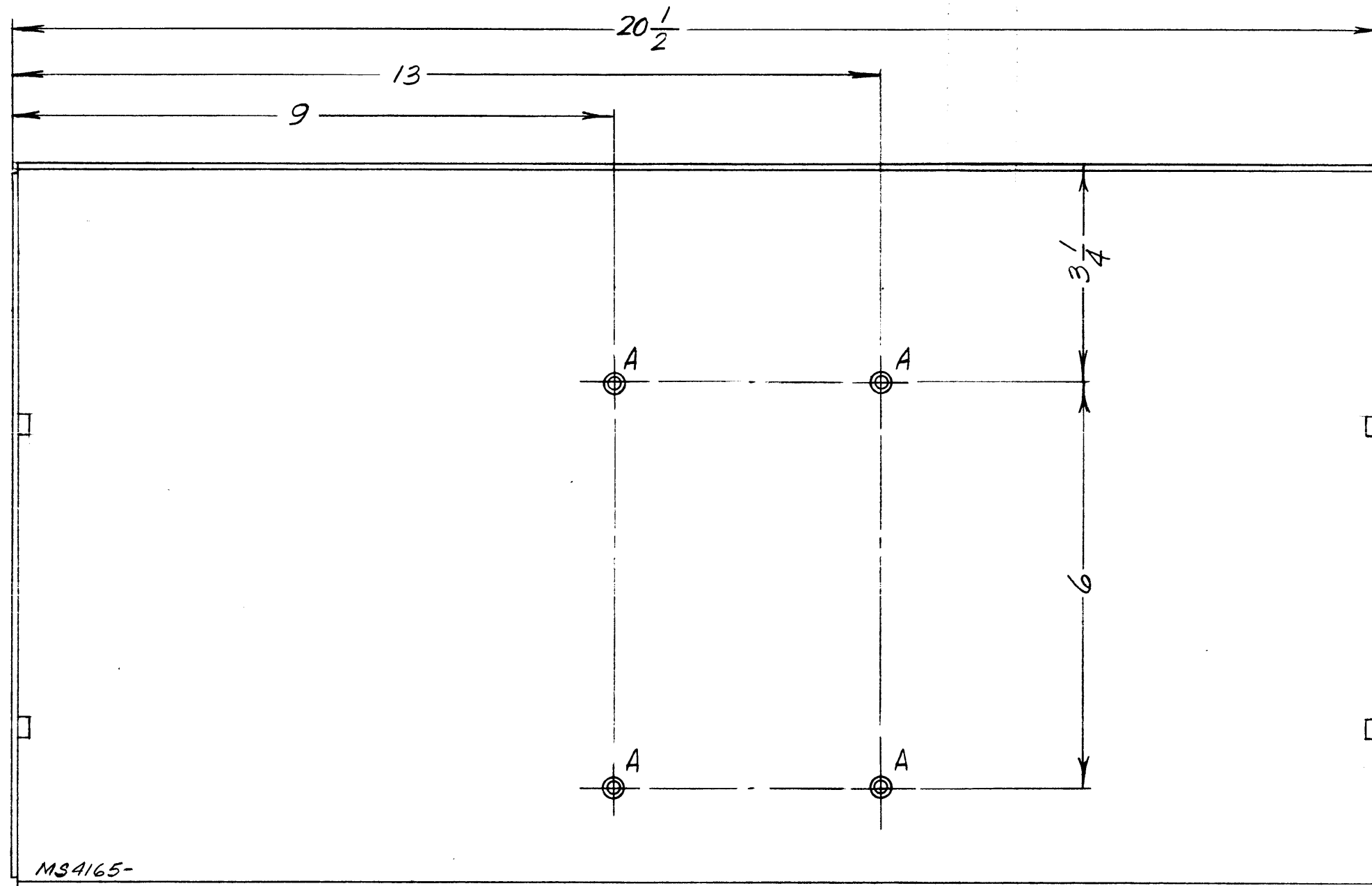


HOLE	DESCRIPTION	REQ.
A	.191-.194 DIA.	8

MS4165 ϕ

REVISIONS						
SYM	DESCRIPTION	DATE	E.M.N. NO.	DRAFT	CHKD	APPD
ϕ	ORIGINAL RELEASE FOR PRODUCTION	9/25/69		CU		



UNLESS OTHERWISE SPECIFIED:

1. USE MATERIAL THICKNESS FOR MAXIMUM RADIUS ON ALL BENDS
2. ALL ANGULAR BENDS 90 DEGREES
3. REMOVE ALL BURRS AND SHARP EDGES
4. MOUNT INSERTS AFTER FINISHING

NOTES

1	COPA-2	A4017
Q'TY./UNIT	MODEL USED ON	ASS'Y. NO.
SCALE 1/2 = 1	CODE A	

THE CONTENTS OF THIS DRAWING ARE THE EXCLUSIVE PROPERTY OF THE TECHNICAL MATERIEL CORP. ITS UNAUTHORIZED USE OR REPRODUCTION IN WHOLE OR IN PART IS STRICTLY FORBIDDEN.

8	1	NT129-632-4	NUT, SWAGE TYPE	
REQ'D.	ITEM	PART NUMBER	DESCRIPTION	SYMBOL

EATON		LIST OF MATERIAL		
MATERIAL		THE TECHNICAL MATERIEL CORP. MAMARONECK, NEW YORK		
.081 ALUMINUM, 5052-H32		TITLE BRACKET, TAPE REEL		
FINISH 5404, 5115, 5520 BLU TEX		DRAWN H. AUSTIN		
UNLESS OTHERWISE SPECIFIED DIMENSIONS ARE IN INCHES AND INCLUDE CHEMICALLY APPLIED OR PLATED FINISHES		DATE 6-18-66	FINAL APPROVAL <i>[Signature]</i>	DATE 9/25/69
DECIMALS .X ± .05 .XX ± .01 .XXX ± .005		DATE 6-20-66	MS4165	
FRACTIONS ± 1/64 ANGLES ± 0° 30'		DATE	φ	
TOLERANCES		DATE	SHEET	
		DATE	REV. LTR.	

M/L