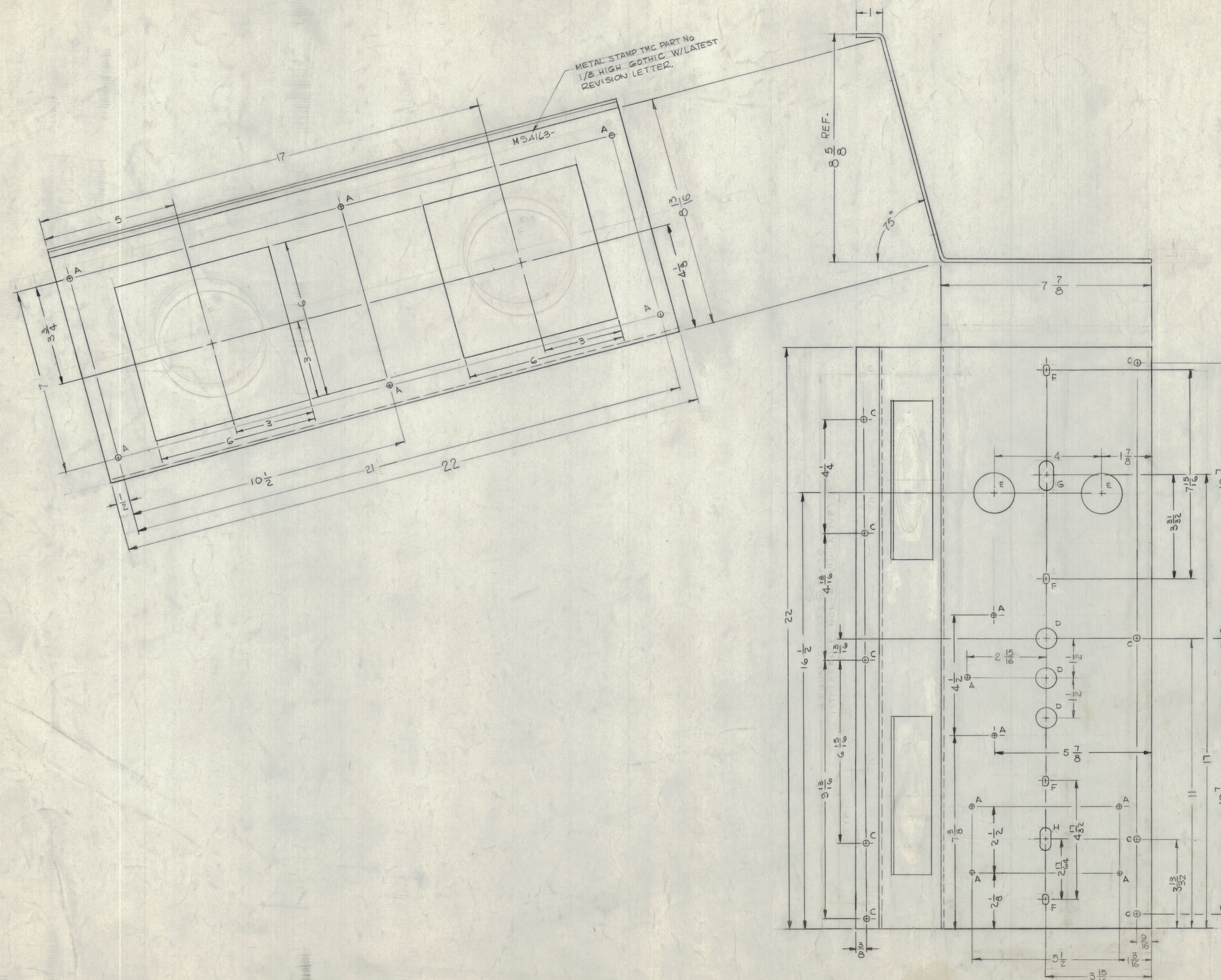
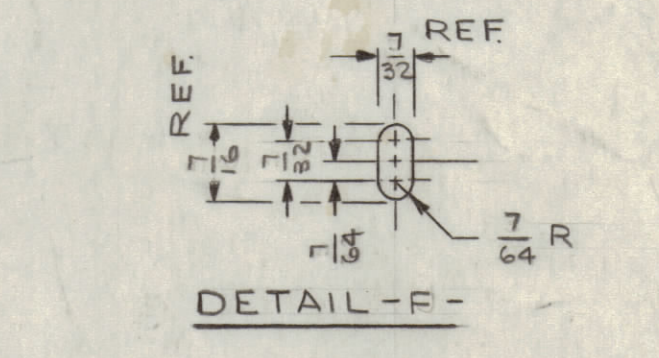
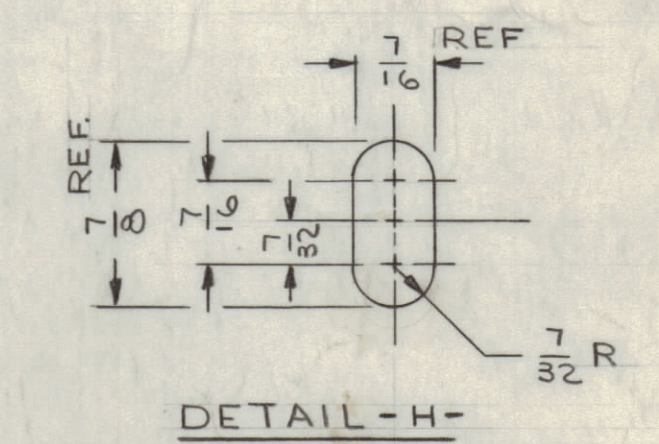
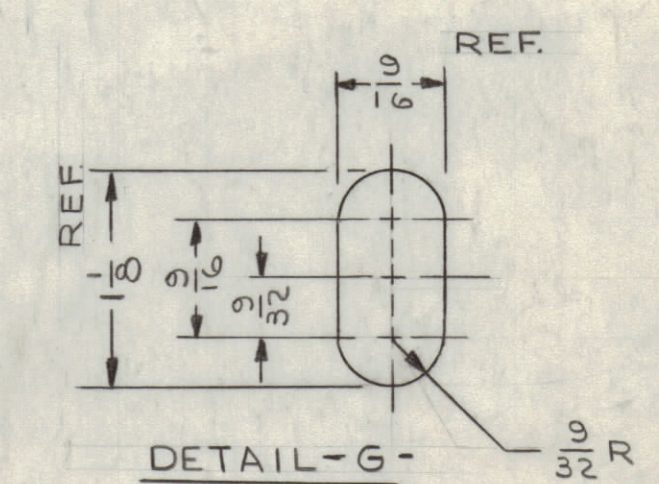


REVISIONS							
ZONE	SYM	DESCRIPTION	DATE	E.M.N. NO.	DRAFT	CHKD	APPD
	X1	COMPLETELY REVISED	2/21/65		JL		
	X2	CUTOUTS WERE 4" HOLES, HOLE LEGEND REVISED	11-8-65	X1	JL		
	X3	3-13/32 WAS 3-3/8, 17 WAS 17/32	2-17-66	X3	JL		
	Ø	ORIGINAL RELEASE FOR PRODUCTION	2-17-66	-#-	Jc		



HOLE	DESCRIPTION	REQ'D
A	3/16 DIA.	13
B	DELETED	
C	7/32 DIA.	9
D	3/4 DIA.	3
E	1 1/2 DIA.	2
F	SEE DETAIL	4
G	SEE DETAIL	1
H	SEE DETAIL	1
J	SEE DETAIL	4



QTY./UNIT	MODEL USED ON	ASSY. NO.
1	GPT-10KLF	AX531

SCALE: 1/2

THE CONTENTS OF THIS DRAWING ARE THE EXCLUSIVE PROPERTY OF THE TECHNICAL MATERIEL CORP. ITS UNAUTHORIZED USE OR REPRODUCTION IN WHOLE OR IN PART IS STRICTLY FORBIDDEN.

DECIMALS: .X ± .05, .XX ± .01, .XXX ± .005

FRACTIONS: ± 1/64, ANGLES: ± 0° 30'

USE MATERIAL THICKNESS FOR MAX. RADIUS ON ALL BENDS UNLESS OTHERWISE SPECIFIED

LD1671

REQ'D.	ITEM	PART NUMBER	DESCRIPTION	SYMBOL
	Ø			

LIST OF MATERIAL

MATERIAL	TITLE
1/8 THK. ALUMINUM 5052-H32	THE TECHNICAL MATERIEL CORP. MAMARONECK, NEW YORK
FINISH: 5404 YEL. IRIDITE	OUPUT TRANSFORMER, CHASSIS

DRAWN	DATE	FINAL APPROVAL	DATE
G.D.L.	4-9-63	<i>[Signature]</i>	2/17/66
CHECKED: <i>[Signature]</i>	DATE: 6-28-65		
ELECT. DESI:	DATE:		
MECH. DESI:	DATE:		

MS 4163

2/ML arl 2/17/66

MS 4163