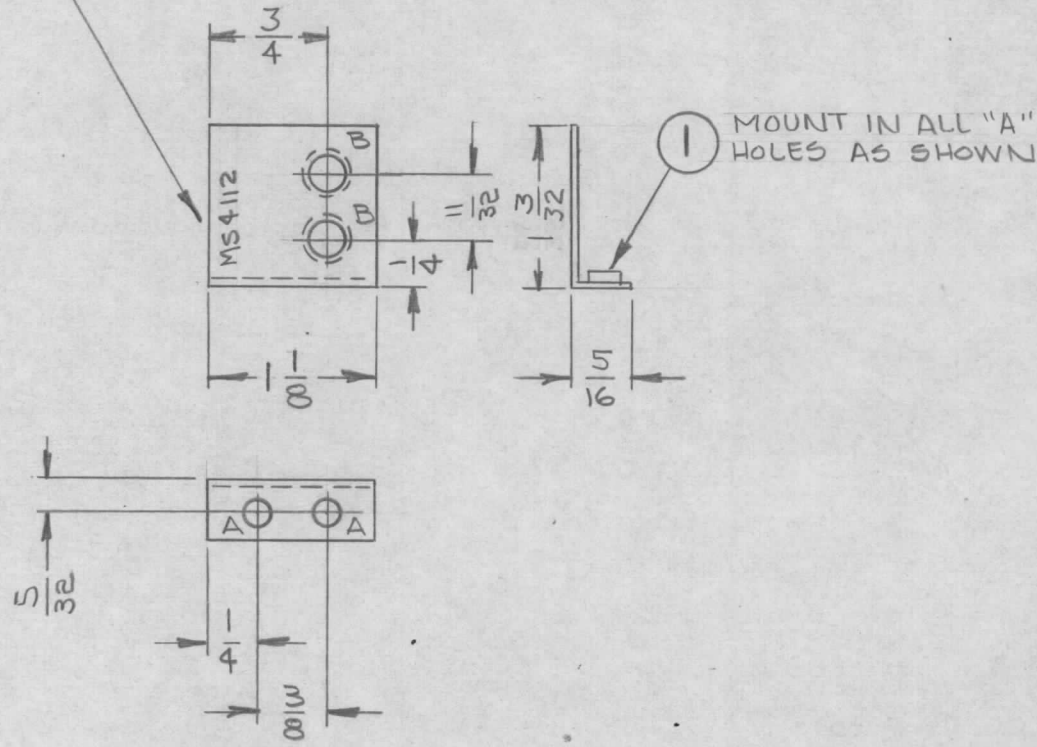


METAL STAMP TMC PART NO. 1/8  
HIGH GOTHIC, WITH LATEST  
REVISION LETTER.

REQ. PER UNIT	USED ON			MS4112	A
	MODEL	ASS'Y. NO.	DATE		
1	VLRB-1/EX208	A3750	10-28-64		



HOLE	DESCRIPTION	REQ.
A	.136 - .139 DIA	2
B	.167 DIA, C'SINK 60°, .015 DP, ON REAR	2

UNLESS OTHERWISE SPECIFIED:

1. USE MATERIAL THICKNESS FOR MAXIMUM RADIUS ON ALL BENDS
2. ALL ANGULAR BENDS 90 DEGREES
3. REMOVE ALL BURRS AND SHARP EDGES
4. MOUNT INSERTS AFTER FINISHING

2	1	NT129-256-3	NUT, PLAIN, SPLINE	A
REQ. ITEM	PART NO.		GELLMAN DESCRIPTION	SYMBOL
A	.040 THK		THE TECHNICAL MATERIEL CORP. MAMARONECK, NEW YORK	
Ø	STOCK SIZE		SHIELD, R.F.	
X	COPPER			
SYM	DESCRIPTION		MATERIAL	
UNLESS OTHERWISE SPECIFIED DIMENSIONS ARE IN INCHES AND INCLUDE CHEMICALLY APPLIED OR PLATED FINISHES		SCALE	1:1	
DECIMALS .X ± .05 .XX ± .01 .XXX ± .005	FRACTIONS ± 1/64 ANGLES ± 0° 30'	CODE A	TYPE & TEMPER —H—	HEAT TREAT. SPEC. —H—
TOLERANCES		DATE	DRAWN	CHECKED
		11-13-64	G. Swann @ 11-3-64	J. [Signature]
		10-28-64	M. Haffner	MS4112
			ELEC. DES. APP.	MECH. DES. APP.