

IF IT IS FOUND DESIRABLE TO CHANGE ANY TOLERANCE OR OTHER DETAIL SPECIFIED ON THIS DRAWING NOTIFY THE PURCHASER PROMPTLY.

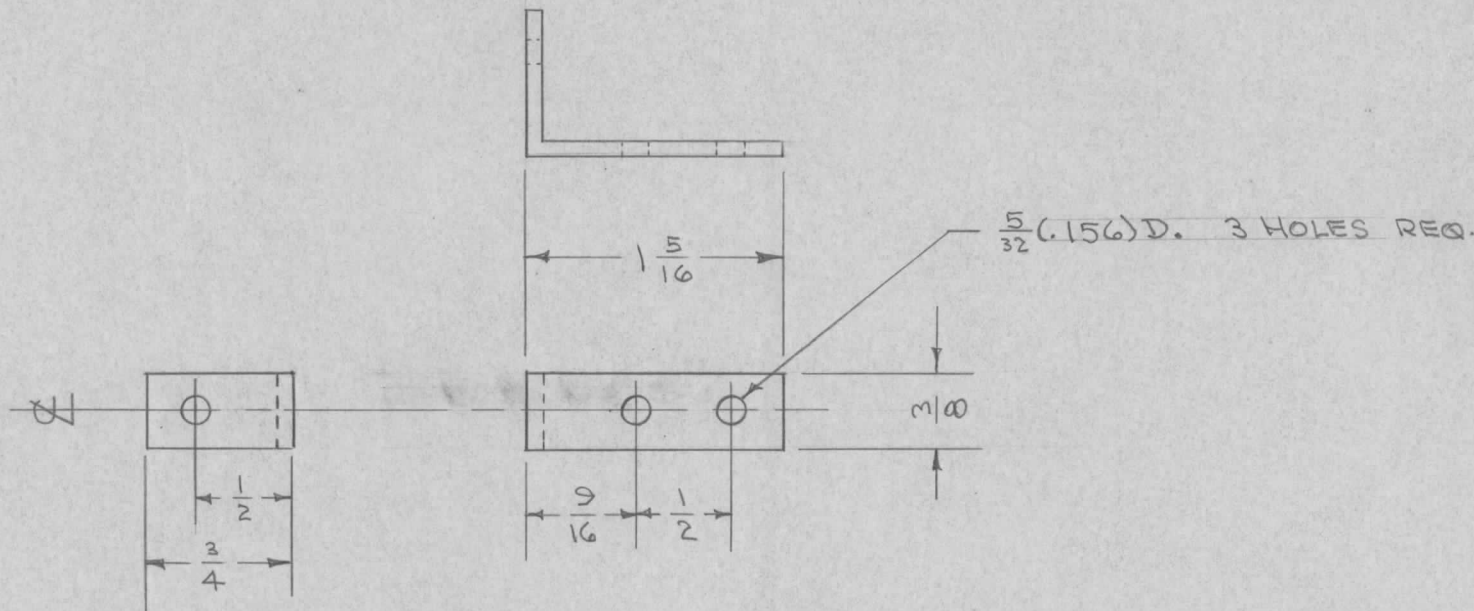
MS-405

A

MAXIMUM ALLOWABLE TOLERANCES HAVE BEEN DETERMINED AND DEVIATIONS WILL BE CAUSE FOR REJECTION. REMOVE ALL BURRS AND SHARP EDGES

USED ON

MODEL	PROJECT NO.	ASS'Y. NO.	DATE
RSC-1 <i>abcidje</i>	170	A-553	9-30-53



REQ.	ITEM	PART NO.	DESCRIPTION	SYMBOL
		.064	THE TECHNICAL MATERIEL CORP.	
		STOCK SIZE	MAMARONECK, NEW YORK	
	ALUMINUM	#	BRACKET, TERM. BD.	
	MATERIAL	WEIGHT PER PC.	RSC-1	
		52S-H32		
		TYPE & TEMPER	G.D.D. 9-30-53	G.T.O
			DRAWN	ELEC. DES. APP. MECH. DES. APP.
		HEAT TREAT. SPEC.	JAD. JB	G.T.O
		FINISH & SPEC. NO.	CHECKED	FINAL APPROVAL
				MS-405 A

A	1	5404-IRIDITE WAS 3101-CAUSTIC DIP	12-7 59	1001	P	EMN
ISSUE	ITEM	CHANGED FROM	DATE	CN. NO.	DRAFTS CHECKER	ENG. APP.

TOLERANCES

SCALE #

ALL OTHERS
DEC. DIM. \pm
FRAC. DIM. $\pm \frac{1}{64}$
ANGULAR DIM. \pm

DRILL, PUNCH, COMMERCIAL STOCK SIZES AND MANUFACTURERS TOLERANCES ARE NOT INCLUDED.

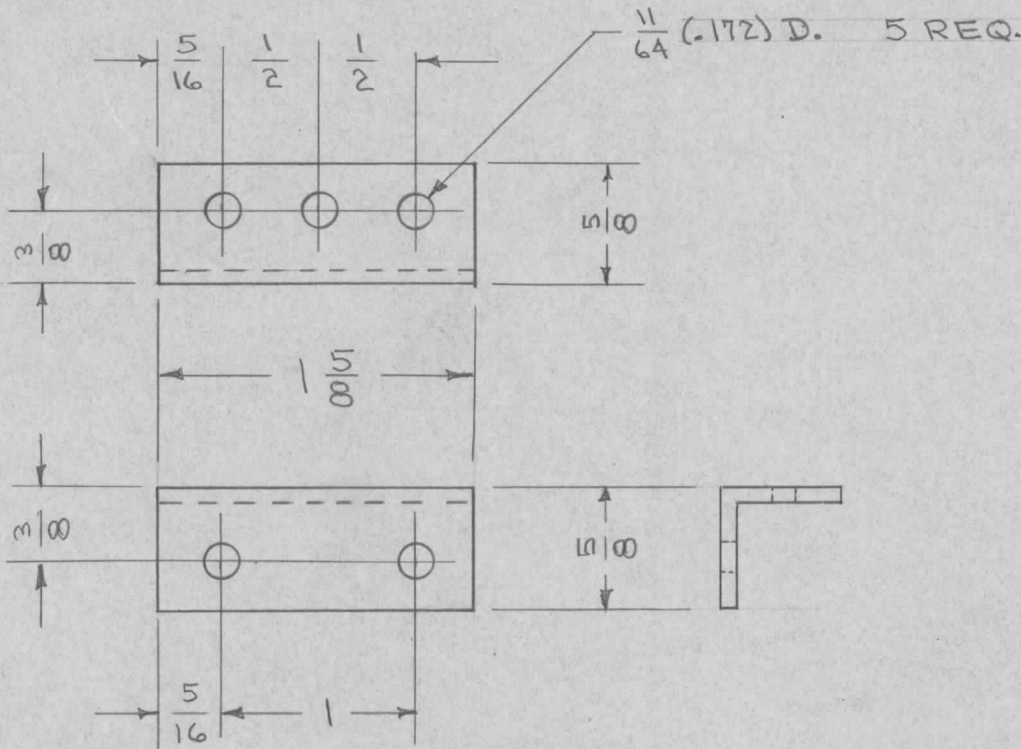
IF IT IS FOUND DESIRABLE TO CHANGE ANY TOLERANCE OR OTHER DETAIL SPECIFIED ON THIS DRAWING NOTIFY THE PURCHASER PROMPTLY.

MS-406 A

MAXIMUM ALLOWABLE TOLERANCES HAVE BEEN DETERMINED AND DEVIATIONS WILL BE CAUSE FOR REJECTION. REMOVE ALL BURRS AND SHARP EDGES

USED ON

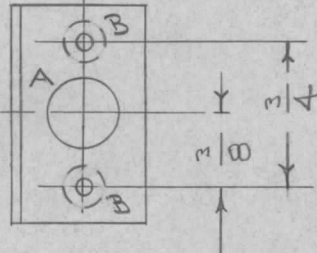
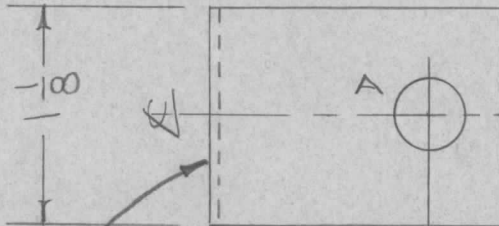
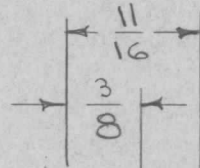
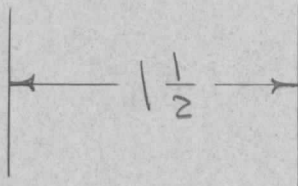
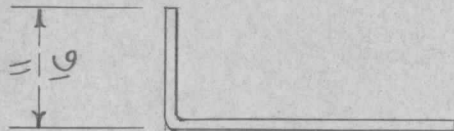
MODEL	PROJECT NO.	ASS'Y. NO.	DATE
RSC-1	170		10-1-53



REQ.	ITEM	PART NO.	DESCRIPTION	SYMBOL
		.064	THE TECHNICAL MATERIEL CORP. MAMARONECK. NEW YORK	
		ALUMINUM	RESISTOR BRACKET	
		52S-H32	RSC-1	
			ADD. 10-1-53	G.T.O. <i>WDC</i>
			DRAWN	ELEC. DES. APP. MECH. DES. APP.
			HEAT TREAT. SPEC.	<i>WDC</i>
		S404 IRIDITE	CHECKED	FINAL APPROVAL
				MS-406 A

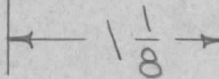
ISSUE	ITEM	CHANGED FROM	DATE	CN. NO.	DRAFTS	CHECKER	ENG. APP.
A	1	S404- IRIDITE WAS S101- CAUSTIC DIP	12-7 59	1001	P		EMN
TOLERANCES		SCALE					
ALL OTHERS	DEC. DIM. ± FRAC. DIM. ±1/64 ANGULAR DIM. ±	DRILL, PUNCH, COMMERCIAL STOCK SIZES AND MANUFACTURERS TOLERANCES ARE NOT INCLUDED.					

REQ. PER UNIT	USED ON			MS-410	C
	MODEL	ASS'Y. NO.	DATE		
1	XFK	A-685	10-6-53		



A - 3/8 (.375) D. 2 REQ.
 B - DRILL & C'SINK 3-48 2 "

NOTE:
 C'SINK FROM TOP SIDE OF LIP



BLANK SIZE 2 1/64 X 1 1/8

UNLESS OTHERWISE SPECIFIED DIMENSIONS ARE IN INCHES AND INCLUDE CHEMICALLY APPLIED OR PLATED FINISHES		
DECIMALS	TOLERANCES	FRACTIONS
.X ± .05		± 1/64
.XX ± .01		ANGLES
.XXX ± .005		± 0° 30'

CUT HERE
 GUARANTEED
 2-66

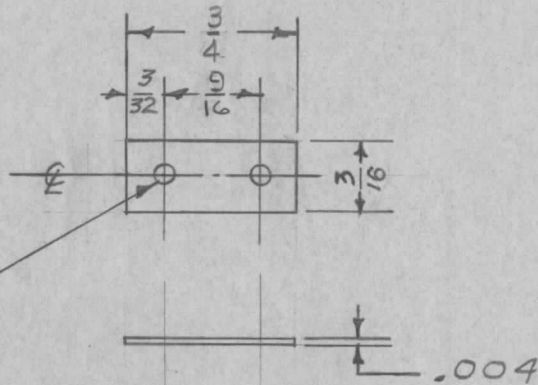
REQ.	ITEM	PART NO.	DESCRIPTION				SYMBOL
		.051	THE TECHNICAL MATERIEL CORP.				
		STOCK SIZE	MAMARONECK, NEW YORK				
C	1	5404 - IRIDITE WAS S101 - CAUSTIC DIP	12-3 53	1001	EMN	COVER BRACKET	
B	1	NOTE ADDED, PICTORIAL CORR.	11/29/56	2	ALUMINUM	XFK	
A	1	COMPLETE REVISION	5/28/56	1			
ISSUE	ITEM	CHANGED FROM	DATE	CH. NO.	DRAFTS	CHECKER	ENG. APP.
TOLERANCES			SCALE:				
DEC. DIM. ±			MAXIMUM ALLOWABLE TOLERANCES HAVE BEEN DETERMINED AND ANY DEVIATIONS WILL BE CAUSE FOR REJECTION.				
FRAC. DIM. ±			REMOVE ALL BURRS AND SHARP EDGES				
ANGULAR DIM. ±							
		5052 H32	DRAWN		CHECKED	FINAL APPROVAL	
		S404 IRIDITE	ELEC. DES. APP.		MECH. DES. APP.	MS-410	
		FINISH & SPEC. NO.				C	

IF IT IS FOUND DESIRABLE TO CHANGE ANY TOLERANCE OR OTHER DETAIL SPECIFIED ON THIS DRAWING NOTIFY THE PURCHASER PROMPTLY.

MAXIMUM ALLOWABLE TOLERANCES HAVE BEEN DETERMINED AND DEVIATIONS WILL BE CAUSE FOR REJECTION. REMOVE ALL BURRS AND SHARP EDGES

MS-413 B

QUAN. PER UNIT	MODEL	USED ON		
		PROJECT NO.	ASS'Y. NO.	DATE
1	VOX	101	A-584	11-11-53
1	PMO ₂	285	A-584	8-17-54
1	VOX-2	291		1-24-55
1	RTF			2-1-56
1	RTF-2	M/O		11-10-58
1	AD-100		A-1742	



#55 DR. (.052) 2 REQ.

UNLESS OTHERWISE SPECIFIED DIMENSIONS ARE IN INCHES AND INCLUDE CHEMICALLY APPLIED OR PLATED FINISHES		
DECIMALS	TOLERANCES	FRACTIONS
.X ± .05		± 1/64
.XX ± .01		ANGLES
.XXX ± .005		± 0° 30'

Ref. ms-318

CUT HERE
GUARANTEED
2-66

REQ.	ITEM	PART NO.	DESCRIPTION	SYMBOL
		.004 THK	THE TECHNICAL MATERIEL CORP. MAMARONECK, NEW YORK	
		STOCK SIZE		
		BRASS	CAM, STRIP EXTENSION	
		MATERIAL	WEIGHT PER PC.	(OSC. ASSY.)
		TYPE & TEMPER	16 11-11-53	ATT
		HEAT TREAT. SPEC.	DRAWN	ELEC. DES. APP.
		FINISH & SPEC. NO.	CHECKED	MECH. DES. APP.
			FINAL APPROVAL	
			MS-413 B	

ISSUE	ITEM	CHANGED FROM	DATE	CN. NO.	DRAFTS	CHECKER	ENG. APP.
B		DIM. CHG. 3/4 WAS 1/2 9/16 WAS 5/16	10/15/59	1424	AC	WDE	WDE
A	2	1/2 WAS 7/16	1/13/54	CR10	CD.D.	WDE	WDE
	1	5/16 WAS 1/4					

TOLERANCES		SCALE	TWICE
ALL OTHERS	DEC. DIM. ± FRAC. DIM. ± ANGULAR DIM. ±	DRILL, PUNCH, COMMERCIAL STOCK SIZES AND MANUFACTURERS TOLERANCES ARE NOT INCLUDED.	

IF IT IS FOUND DESIRABLE TO CHANGE ANY TOLERANCE OR OTHER DETAIL SPECIFIED ON THIS DRAWING NOTIFY THE PURCHASER PROMPTLY.

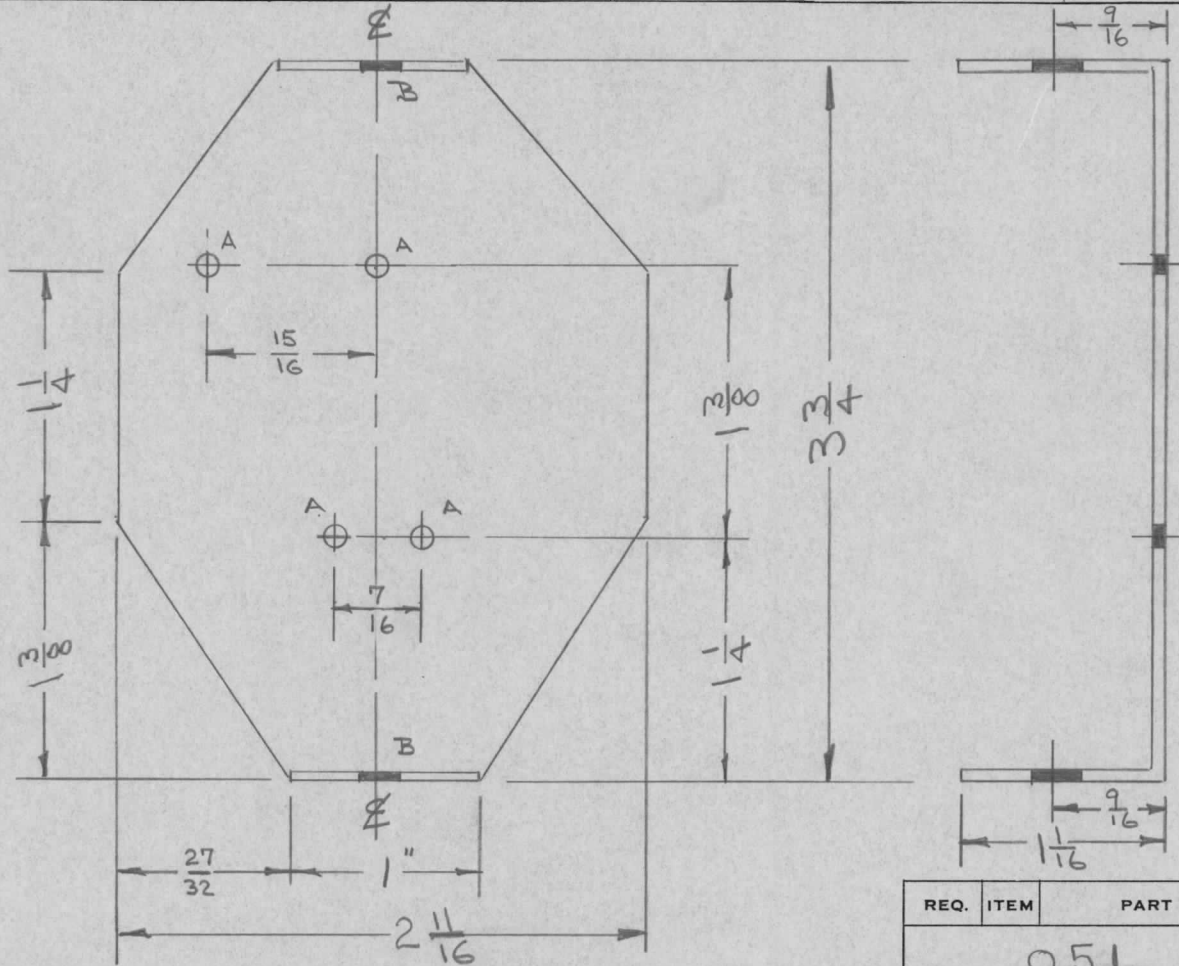
MS-415 A

MAXIMUM ALLOWABLE TOLERANCES HAVE BEEN DETERMINED AND DEVIATIONS WILL BE CAUSE FOR REJECTION. REMOVE ALL BURRS AND SHARP EDGES

REQ. PER UNIT

USED ON

MODEL	PROJECT NO.	ASS'Y. NO.	DATE
DAC	180	A-G23	12-9-53



A = $\frac{1}{8}D$ = 4 Holes
 B = $\frac{5}{16}D$ = 2 Holes

REQ.	ITEM	PART NO.	DESCRIPTION	SYMBOL
		.051	THE TECHNICAL MATERIEL CORP.	
		STOCK SIZE	MAMARONECK, NEW YORK	
		ALUMINUM	MOUNTING PLATE	
		MATERIAL	WEIGHT PER PC.	
		52S-H32	DAC	
		TYPE & TEMPER	<i>H.A.D.</i>	<i>APP</i>
		HEAT TREAT. SPEC.	<i>C.D.D.</i>	<i>APP</i>
		FINISH & SPEC. NO.	S404 IRIDITE	
			CHECKED	FINAL APPROVAL
				MS-415 A

ISSUE	ITEM	CHANGED FROM	DATE	CN. NO.	DRAFTS	CHECKER	ENG. APP.
A	1	S404-IRIDITE WAS S101-CAUSTIC DIP	12-7-59	1001	P		EMN

TOLERANCES

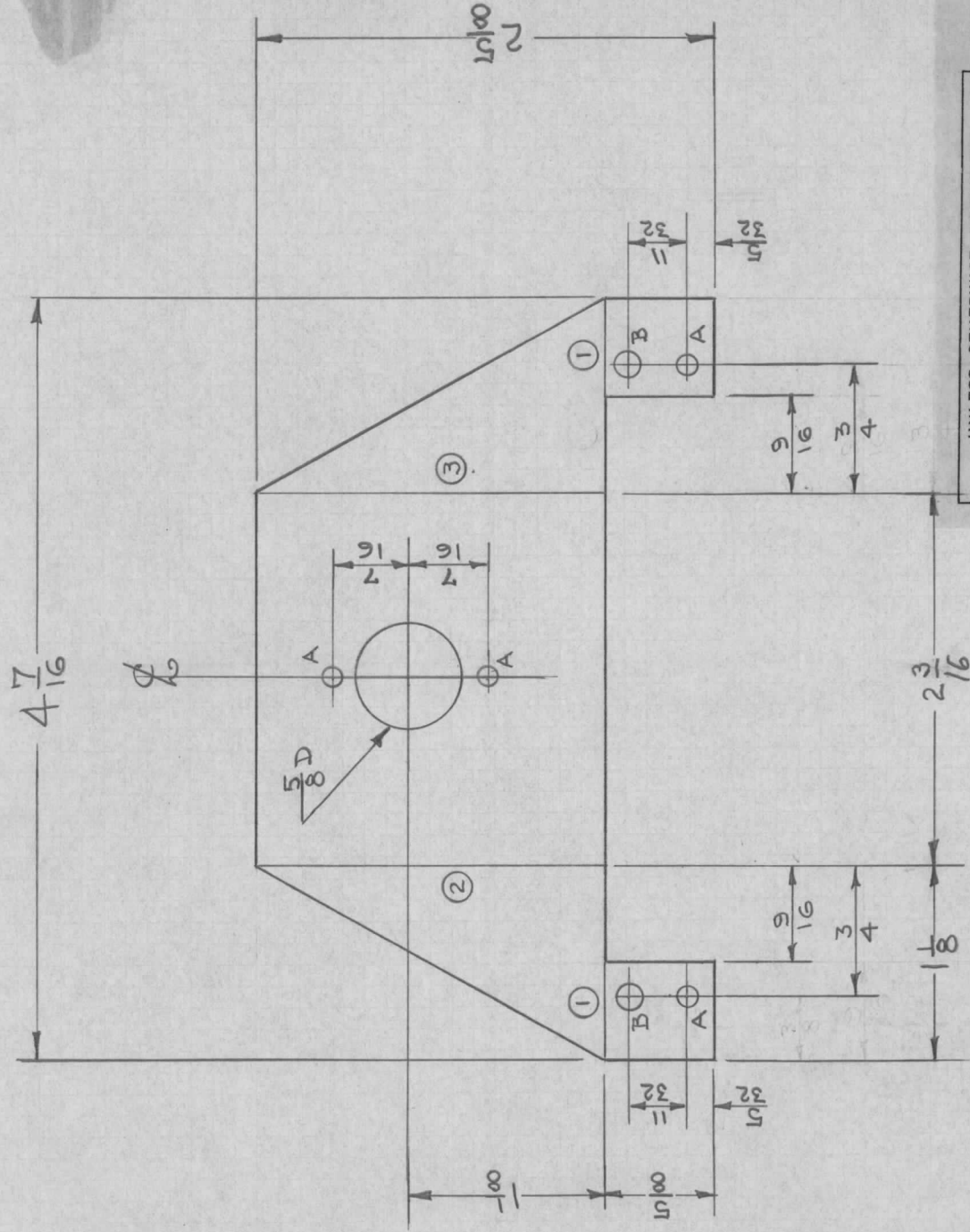
SCALE

ALL OTHERS
 DEC. DIM. \pm
 FRAC. DIM. \pm $\frac{1}{64}$
 ANGULAR DIM. \pm

DRILL, PUNCH, COMMERCIAL STOCK SIZES AND MANUFACTURERS TOLERANCES ARE NOT INCLUDED.

MS-4116

- Bending Procedure
 Bend ① Up Holding Lip
 Bend ② Up Holding Lip
 Bend ③ Up Holding Lip



Note:
 Stamp GAL5 on Bracket.
 V22

Required: One Per Unit
 Finish: Alkali Etch & Lacquer
 Material: 525-H32 Aluminum .051

CUT HERE
 2-66
 GUARANTEED

UNLESS OTHERWISE SPECIFIED DIMENSIONS ARE IN INCHES AND INCLUDE CHEMICALLY APPLIED OR PLATED FINISHES	
DECIMALS	FRACTIONS
.X ± .05	± 1/64
.XX ± .01	ANGLES
.XXX ± .005	± 0° 30'

Legend
 A = 9/64 - 4 Holes
 B = 11/64 - 2 Holes.

REF: A-648

DATE 4-9-52

DRN. JADe

CHKD. PM

APPD. PM

TUBE BRACKET
 Osc. Modification Kit
 First Run Serial # 101-162
 Model CFA

THE TECHNICAL MATERIEL
 CORPORATION
 MAMARONECK, NEW YORK

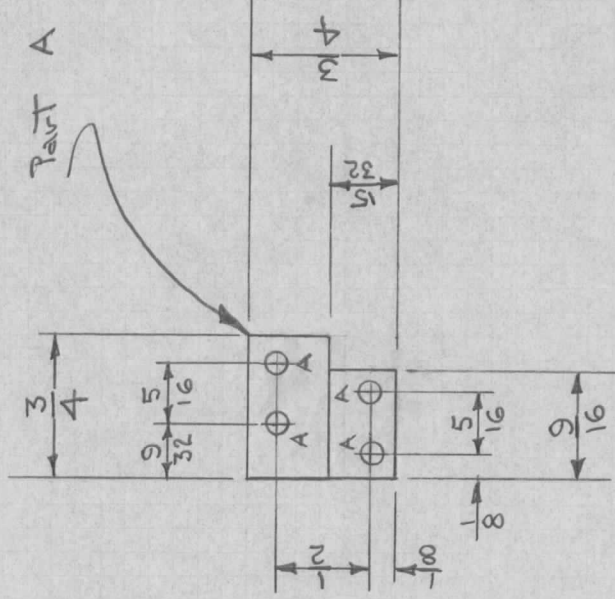
SHEET OF

NO. MS-416

MS-417

Bending Procedure

Bend Up on Bend Line Holding Part A



Legend

A = 9/64 D - 4 Holes Req.

UNLESS OTHERWISE SPECIFIED DIMENSIONS ARE IN INCHES AND INCLUDE CHEMICALLY APPLIED OR PLATED FINISHES	
DECIMALS	FRACTIONS
X ± .05	± 1/64
.XX ± .01	ANGLES
.XXX ± .005	± 0° 30'

CUT HERE
2-66
GUARANTEED

Required: One Per Unit
Material: 525-H32 Aluminum .051

REF: A-648

DATE 4-11-52

DRN. JADe

CHKD. WDC.

APPD. PNY

BRACKET

OSC. Modification Kit

First Run Serial #101-162

Model CFA

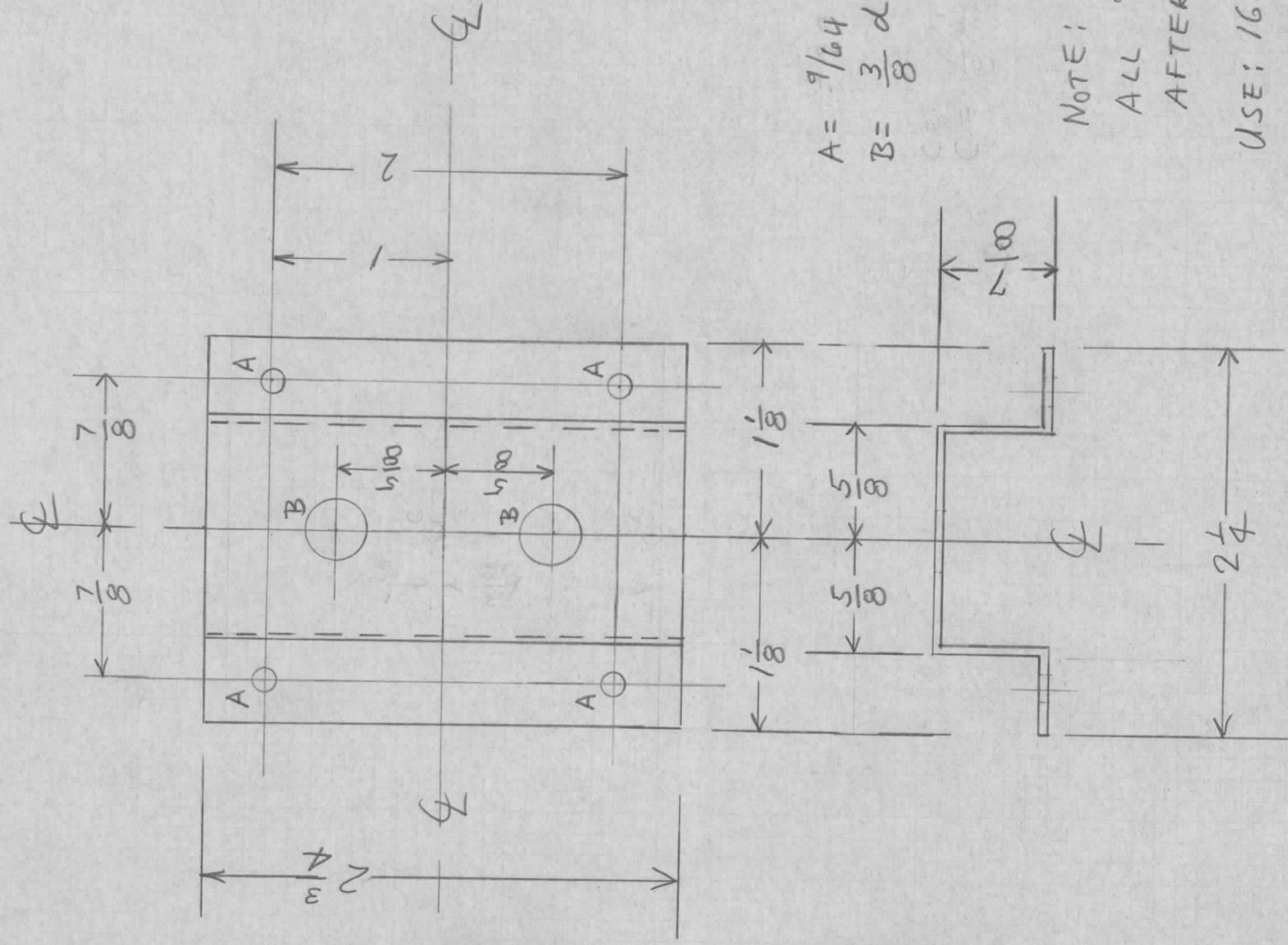
THE TECHNICAL MATERIEL
CORPORATION
MAMARONECK, NEW YORK

SHEET

OF

NO. MS-417

MS-424



A = $\frac{1}{64}$ PUNCH 4 REQ'D
 B = $\frac{3}{8}$ d 2 REQ'D

NOTE:

ALL DIMENSIONS
 AFTER BENDING

USE: 16 GA $\frac{1}{4}$ HARD
 ALUM

FINISH: ALKALI ETCH
 LACQUER FINISH

ONE PER UNIT

WAS AMS056

UNLESS OTHERWISE SPECIFIED DIMENSIONS ARE IN INCHES AND INCLUDE CHEMICALLY APPLIED OR PLATED FINISHES	
DECIMALS	FRACTIONS
.X ± .05	± 1/64
.XX ± .01	ANGLES
.XXX ± .005	± 0° 30'

CUT HERE
 2-66
 GUARANTEED

DATE JAN. 15, 1951
 DRN. P. B.
 CHKD. R. B.
 APPD. *fm*

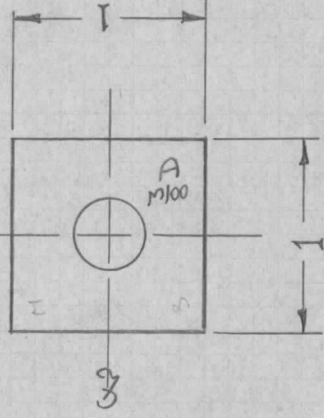
Potentiometer Brkt.
 TKM-RC
 POTENTIOMETER BRACKET

THE TECHNICAL MATERIEL
 CORPORATION
 MAMARONECK, NEW YORK

SHEET OF NO. MS-424

Material: .032 Aluminum, Required: 1 Per Unit

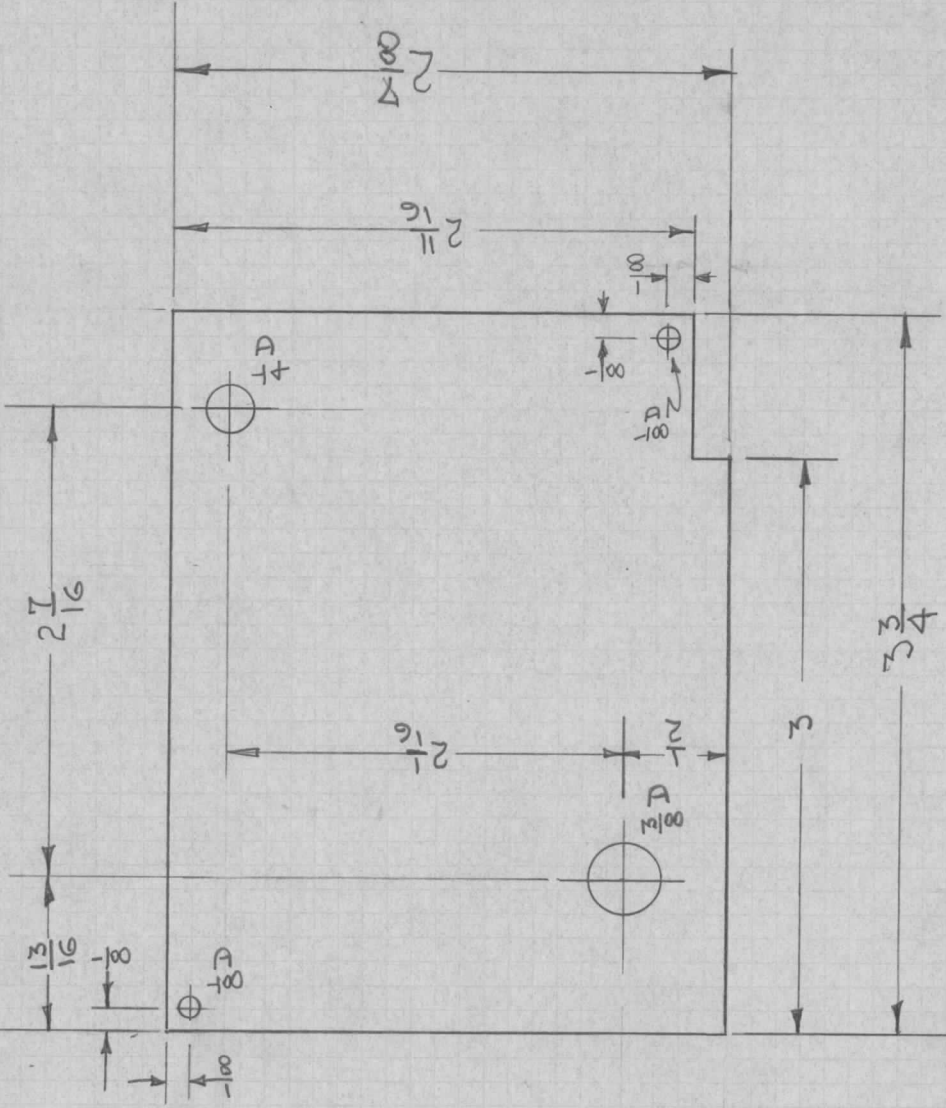
"A"



Blank Size
1 x 1

SUPERCEDED BY

9-23-57
D.



Blank Size 2 7/8 x 3 3/4

UNLESS OTHERWISE SPECIFIED DIMENSIONS ARE IN INCHES AND INCLUDE CHEMICALLY APPLIED OR PLATED FINISHES	
DECIMALS	FRACTIONS
.X ± .05	± 1/64
.XX ± .01	ANGLES
.XXX ± .005	± 0° 30'

CUT HERE
2-66
GUARANTEED

WAS AMS192
2/4/54

"B"

Material: .032 Aluminum 24ST Required: 1 Per Unit

DATE 8-27-51

DRN. *ARB*

CHKD. *ARB*

APPD. *ARB*

- NAME PLATES

THE TECHNICAL MATERIEL
CORPORATION
MAMARONECK, NEW YORK

DMK-1

SHEET

OF

NO. MS-434

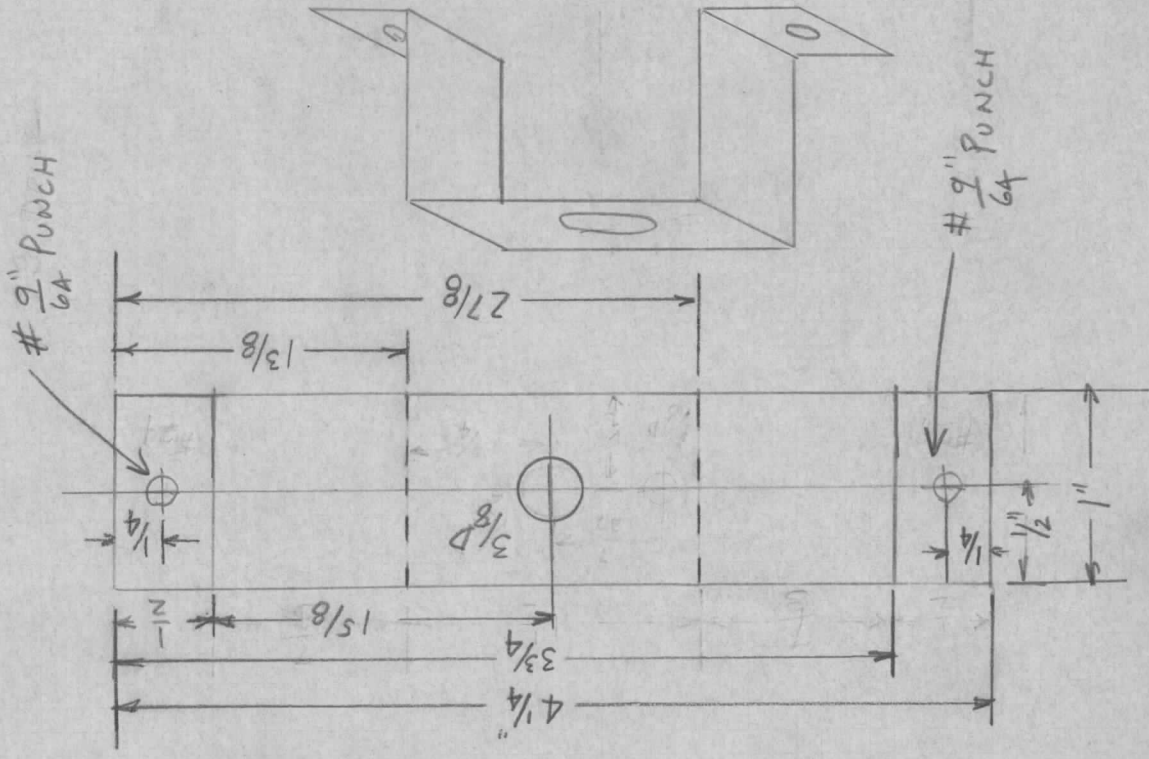
MS-434

MS-435

USE: 16 Ga $\frac{1}{4}$ hard Alum
FINISH: Alkali etch + Lacquer
MAT. SIZE 1" x $4\frac{1}{4}$ "

UNLESS OTHERWISE SPECIFIED DIMENSIONS ARE IN INCHES AND INCLUDE CHEMICALLY APPLIED OR PLATED FINISHES	
DECIMALS	FRACTIONS
.X \pm .05	\pm 1/64
.XX \pm .01	ANGLES
.XXX \pm .005	\pm 0° 30'
TOLERANCES	

CUT HERE
GUARANTEED
2-66



~~OVER~~

WAS AMS038 11/27/53

DATE 12/19/50	POTENIOMETER BRACKET	THE TECHNICAL MATERIEL CORPORATION	SHEET
DRN. CMH	TMC Standard	MAMARONECK, NEW YORK	OF
CHKD. R.B.			
APPD. fm			NO. MS-435

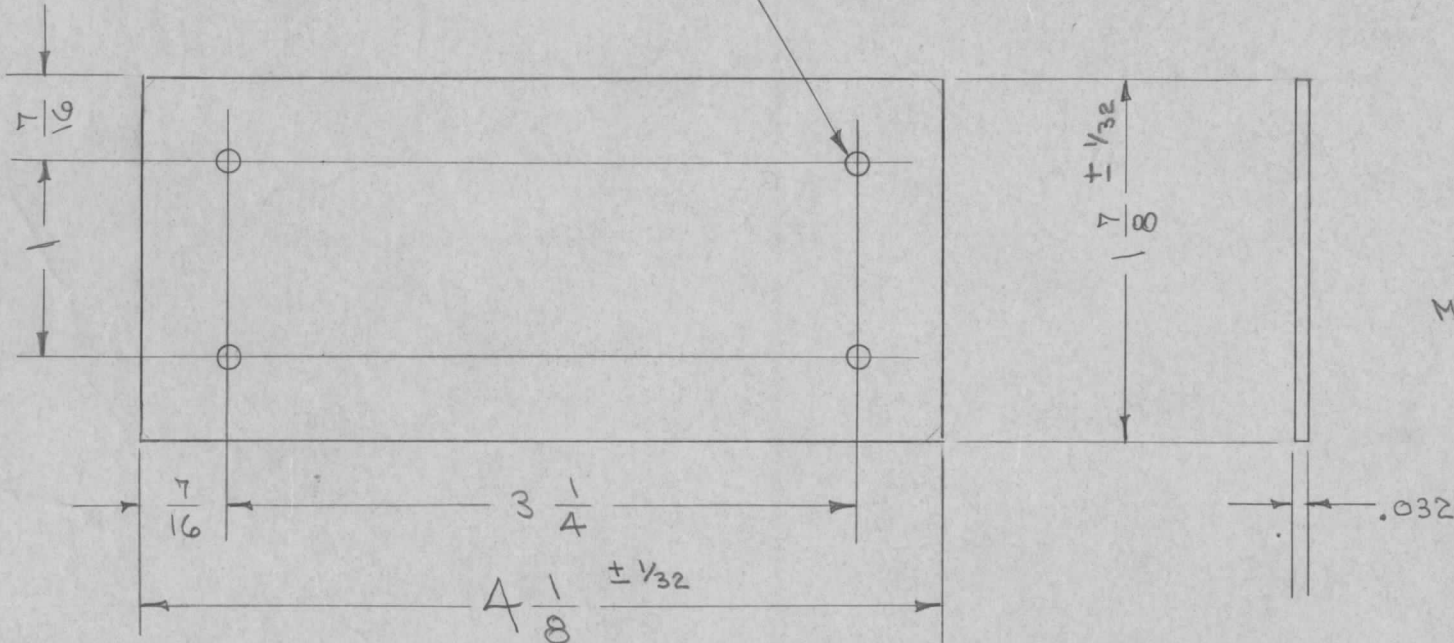
IF IT IS FOUND DESIRABLE TO CHANGE ANY TOLERANCE OR OTHER DETAIL SPECIFIED ON THIS DRAWING NOTIFY THE PURCHASER PROMPTLY.

MS-443

MAXIMUM ALLOWABLE TOLERANCES HAVE BEEN DETERMINED AND DEVIATIONS WILL BE CAUSE FOR REJECTION. REMOVE ALL BURRS AND SHARP EDGES

REQ. PER UNIT	USED ON			
	MODEL	PROJECT NO.	ASS'Y. NO.	DATE
1	TAC-1	132	A-644	1-6-54

$\frac{1}{8}$ (.125) D. 4 REQ.



RIVET TO COVER (DWG. MS-447) AS PER DWG. A-644

UNLESS OTHERWISE SPECIFIED DIMENSIONS ARE IN INCHES AND INCLUDE CHEMICALLY APPLIED OR PLATED FINISHES		
DECIMALS	TOLERANCES	FRACTIONS
.X ± .05		± 1/64
.XX ± .01		ANGLES
.XXX ± .005		± 0° 30'

CUT HERE GUARANTEED 2-66

REQ.	ITEM	PART NO.	DESCRIPTION	SYMBOL
		20 GA. (.032)	THE TECHNICAL MATERIEL CORP.	
		STOCK SIZE	MAMARONECK. NEW YORK	
		BRASS	GROUND PLATE	
		MATERIAL	TAC-1	
		WEIGHT PER PC.		
		TYPE & TEMPER		
		HEAT TREAT. SPEC.		
		SILVER PLATE .0003		
		FINISH & SPEC. NO.		

ISSUE	ITEM	CHANGED FROM	DATE	CN. NO.	DRAFTS	CHECKER	ENG. APP.
TOLERANCES			SCALE				
ALL OTHERS	DEC. DIM. ± FRAC. DIM. ± 1/64 ANGULAR DIM. ±		DRILL, PUNCH, COMMERCIAL STOCK SIZES AND MANUFACTURERS TOLERANCES ARE NOT INCLUDED.				

C.D.D. *AKS*
 DRAWN *AKS* ELEC. DES. APP. *WDC* MECH. DES. APP. *WDC*
 CHECKED *AKS* FINAL APPROVAL *WDC*
 MS-443

IF IT IS FOUND DESIRABLE TO CHANGE ANY TOLERANCE OR OTHER DETAIL SPECIFIED ON THIS DRAWING NOTIFY THE PURCHASER PROMPTLY.

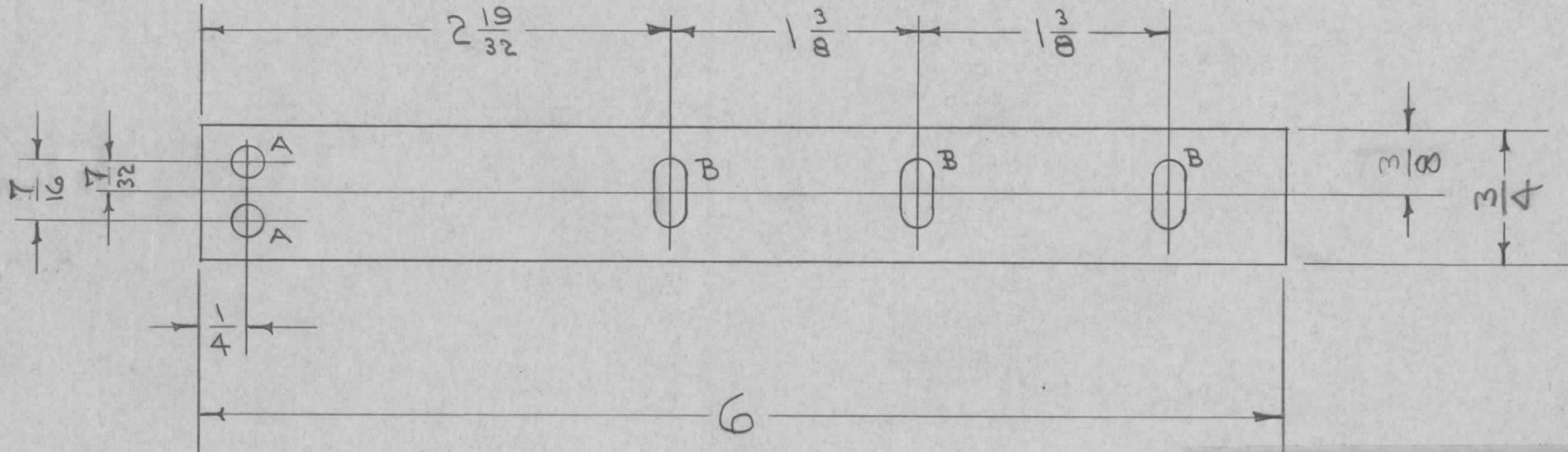
MS-452 B

MAXIMUM ALLOWABLE TOLERANCES HAVE BEEN DETERMINED AND DEVIATIONS WILL BE CAUSE FOR REJECTION. REMOVE ALL BURRS AND SHARP EDGES

REQ PER UNIT

USED ON

REQ PER UNIT	MODEL	PROJECT NO.	ASS'Y. NO.	DATE
1	TAC-1	132	A-715	1-20-54



A - 3/16 (.187) D. 2 HOLES REQ.

B - 1/64 X 11/32 3 SLOTS "

UNLESS OTHERWISE SPECIFIED DIMENSIONS ARE IN INCHES AND INCLUDE CHEMICALLY APPLIED OR PLATED FINISHES	
DECIMALS .X ± .05 .XX ± .01 .XXX ± .005	FRACTIONS ± 1/64 ANGLES ± 0° 30'
TOLERANCES	

CUT HERE
GUARANTEED
2-66

REQ.	ITEM	PART NO.	DESCRIPTION	SYMBOL
		(.032) THK.	THE TECHNICAL MATERIEL CORP. MAMARONECK, NEW YORK	
		STOCK SIZE		
		BRASS	GROUND STRAP, COIL	
		MATERIAL	TAC-1	
		WEIGHT PER PC.	C.D.D.	
		HALF HARD	A/R/B	
		TYPE & TEMPER	DRAWN	
		II	ELEC. DES. APP.	
		HEAT TREAT. SPEC.	CHECKED	
		SILVER PLATE .0003	FINAL APPROVAL	
		FINISH & SPEC. NO.	MS-452 B	

ISSUE	ITEM	CHANGED FROM	DATE	CN. NO.	DRAFTS	CHECKER	ENG. APP.
B	1	3/4 WAS 7/8	6/27/57	2	JAG	16	WJ
A	4	7/8 WAS 3/4	3/10/54	1	C.D.D	WJ	WJ
	3	7/16 " 3/8					
	2	7/16 " 5/16					
	1	7/16 " 5/32					

TOLERANCES		SCALE
ALL OTHERS	DEC. DIM. ± FRAC. DIM. ± 1/64 ANGULAR DIM. ±	DRILL, PUNCH, COMMERCIAL STOCK SIZES AND MANUFACTURERS TOLERANCES ARE NOT INCLUDED.

IF IT IS FOUND DESIRABLE TO CHANGE ANY TOLERANCE OR OTHER DETAIL SPECIFIED ON THIS DRAWING NOTIFY THE PURCHASER PROMPTLY.

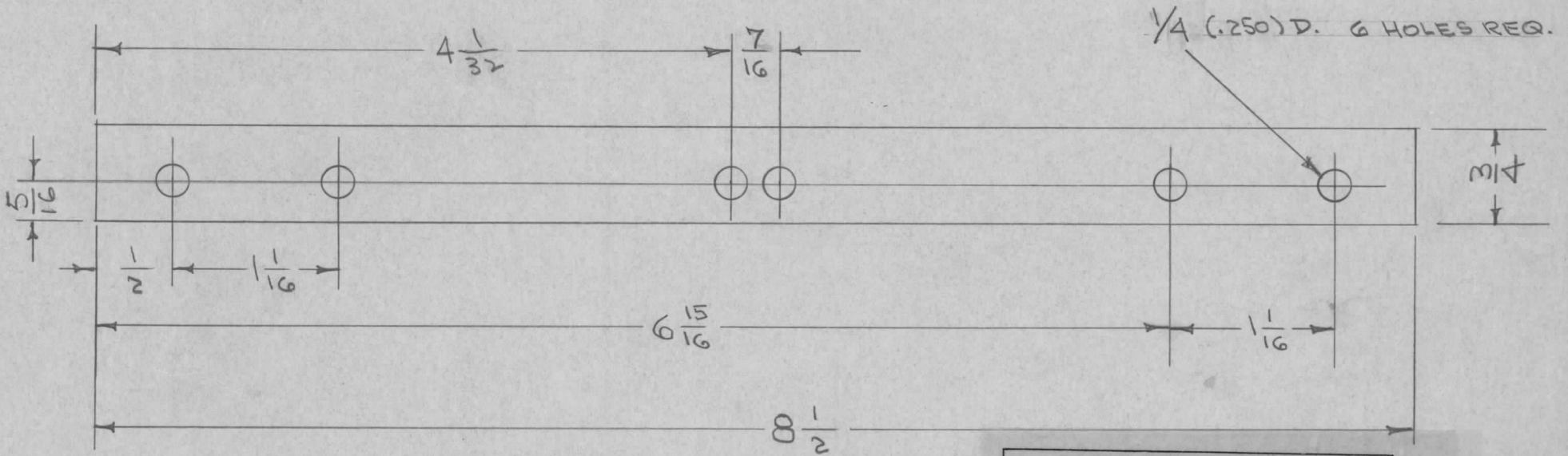
MS-453 B

MAXIMUM ALLOWABLE TOLERANCES HAVE BEEN DETERMINED AND DEVIATIONS WILL BE CAUSE FOR REJECTION. REMOVE ALL BURRS AND SHARP EDGES

REQ. PER UNIT

USED ON

REQ. PER UNIT	MODEL	PROJECT NO.	ASS'Y. NO.	DATE
1	TAC-1	132	A-715	1-20-54



UNLESS OTHERWISE SPECIFIED DIMENSIONS ARE IN INCHES AND INCLUDE CHEMICALLY APPLIED OR PLATED FINISHES

DECIMALS	TOLERANCES	FRACTIONS
.X ± .05		± 1/64
.XX ± .01		ANGLES
.XXX ± .005		± 0° 30'

B	1	3/4 WAS 5/8	4/27/57	2	JAD	B	
	3	7/16 WAS 5/16					
A	2	4/32 WAS 4/32	3/10/54	1	CDD	WOC	WOC
	1	HOLES WERE 7/32					

REQ.	ITEM	PART NO.	DESCRIPTION	SYMBOL
		(.032) THK.	THE TECHNICAL MATERIEL CORP.	
		STOCK SIZE	MAMARONECK, NEW YORK	
		BRASS	GROUND STRAP, SWITCH	
		WEIGHT PER PC.	TAC-1	
		HALF HARD	C.D.D.	
		TYPE & TEMPER	ARB	WOC
		II	DRAWN	ELEC. DES. APP. MECH. DES. APP.
		HEAT TREAT. SPEC.	JAD	ARB WOC
		SILVER PLATE .0003	CHECKED	FINAL APPROVAL
		FINISH & SPEC. NO.		MS-453 B

ISSUE	ITEM	CHANGED FROM	DATE	CN. NO.	DRAFTS	CHECKER	ENG. APP.
		TOLERANCES			SCALE		
ALL OTHERS		DEC. DIM. ±			DRILL, PUNCH, COMMERCIAL STOCK		
		FRAC. DIM. ± 1/64			SIZES AND MANUFACTURERS		
		ANGULAR DIM. ±			TOLERANCES ARE NOT INCLUDED.		

IF IT IS FOUND DESIRABLE TO CHANGE ANY TOLERANCE OR OTHER DETAIL SPECIFIED ON THIS DRAWING NOTIFY THE PURCHASER PROMPTLY.

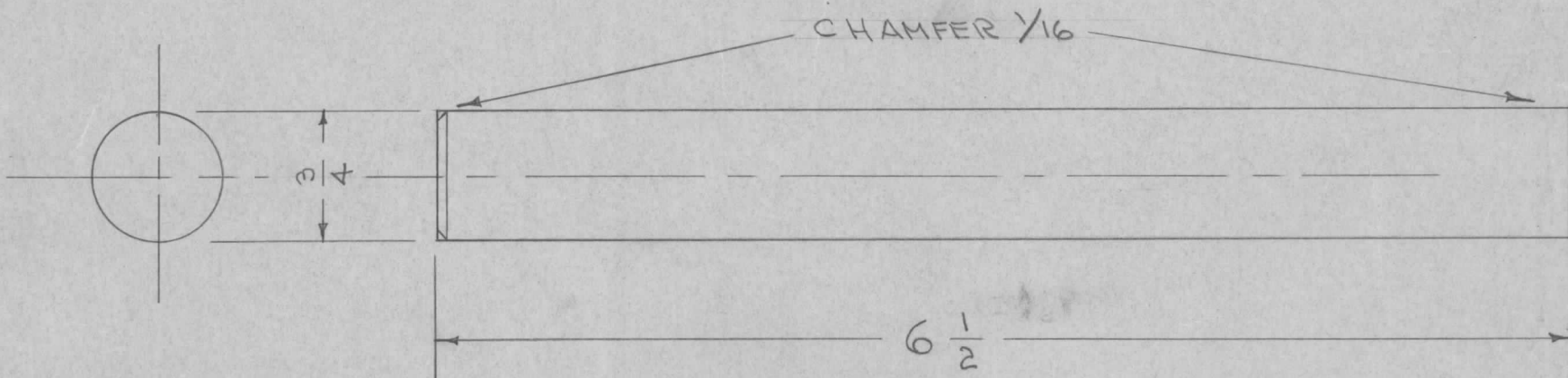
MS-454

MAXIMUM ALLOWABLE TOLERANCES HAVE BEEN DETERMINED AND DEVIATIONS WILL BE CAUSE FOR REJECTION. REMOVE ALL BURRS AND SHARP EDGES

REQ. PER UNIT

USED ON

REQ. PER UNIT	MODEL	PROJECT NO.	ASS'Y. NO.	DATE
1	TAC-1	132	A-719	1-22-54



UNLESS OTHERWISE SPECIFIED DIMENSIONS ARE IN INCHES AND INCLUDE CHEMICALLY APPLIED OR PLATED FINISHES

DECIMALS	TOLERANCES	FRACTIONS
.X ± .05		± 1/64
.XX ± .01		ANGLES
.XXX ± .005		± 0° 30'

CUT HERE GUARANTEED 2-66

REQ.	ITEM	PART NO.	DESCRIPTION	SYMBOL
	3/4	ROD	THE TECHNICAL MATERIEL CORP. MAMARONECK. NEW YORK	
		STOCK SIZE		
	BRASS	— II —	SHORTING BAR	
		MATERIAL WEIGHT PER PC.	TAC-1	
		TYPE & TEMPER	C.D.I.D.	
		II	DRAWN	ELEC. DES. APP. MECH. DES. APP.
		HEAT TREAT. SPEC.	FADE	
		SILVER PLATE .0003	CHECKED	FINAL APPROVAL
		FINISH & SPEC. NO.		MS-454

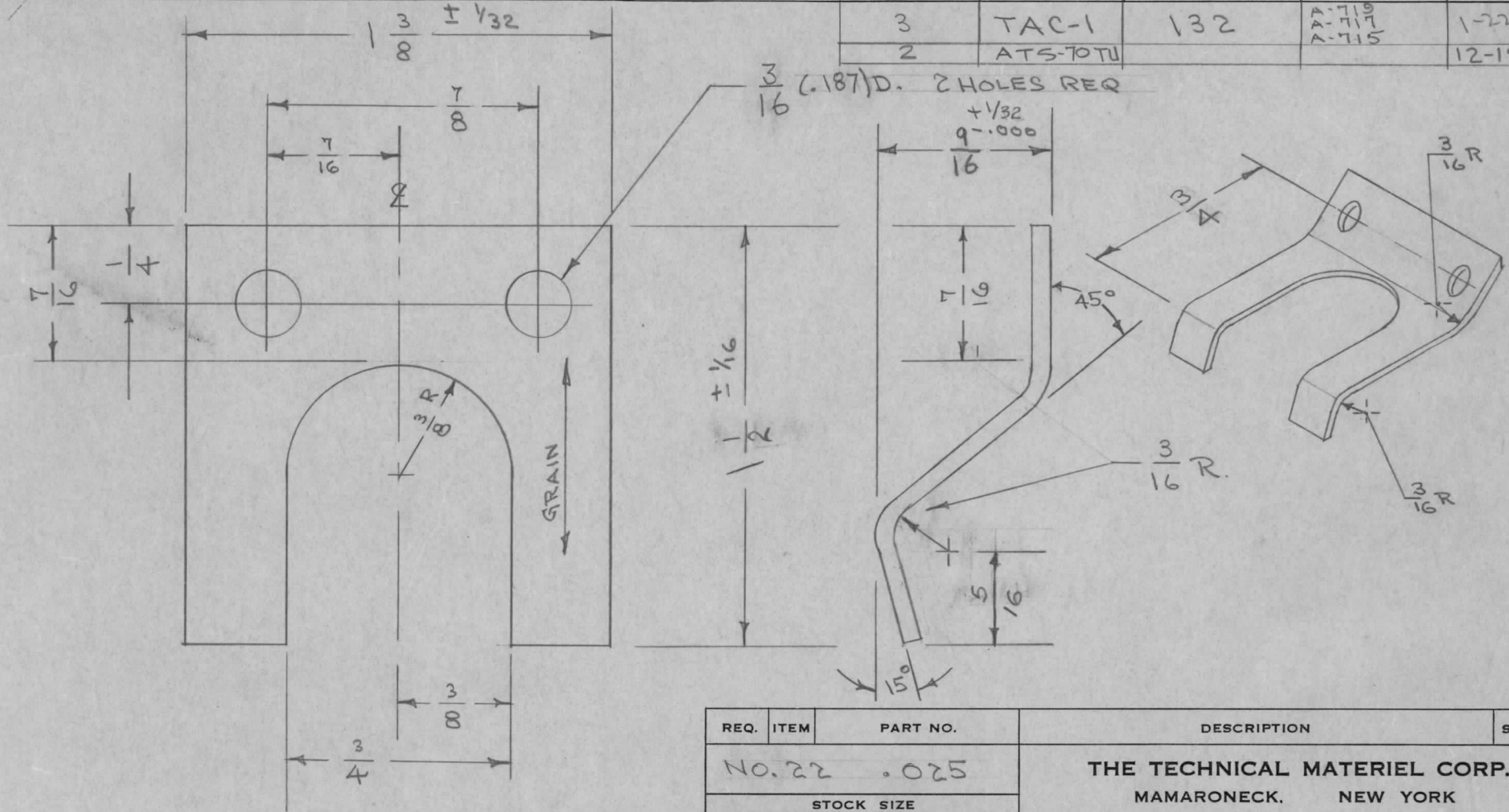
ISSUE	ITEM	CHANGED FROM	DATE	CN. NO.	DRAFTS	CHECKER	ENG. APP.
TOLERANCES			SCALE: 1				
ALL OTHERS	DEC. DIM. ±	FRAC. DIM. ± 1/16	DRILL, PUNCH, COMMERCIAL STOCK SIZES AND MANUFACTURERS TOLERANCES ARE NOT INCLUDED.				
	ANGULAR DIM. ±						

IF IT IS FOUND DESIRABLE TO CHANGE ANY TOLERANCE OR OTHER DETAIL SPECIFIED ON THIS DRAWING NOTIFY THE PURCHASER PROMPTLY.

MS-457 B

MAXIMUM ALLOWABLE TOLERANCES HAVE BEEN DETERMINED AND DEVIATIONS WILL BE CAUSE FOR REJECTION. REMOVE ALL BURRS AND SHARP EDGES

REQ. PER UNIT	USED ON			
	MODEL	PROJECT NO.	ASS'Y. NO.	DATE
3	TAC-1	132	A-719 A-717 A-715	1-22-57
2	ATS-70TU			12-18-57



REQ.	ITEM	PART NO.	DESCRIPTION	SYMBOL
		NO. 22 .025	THE TECHNICAL MATERIEL CORP.	
		STOCK SIZE	MAMARONECK. NEW YORK	
		PHOSPHOR BRONZE, #	SPRING CONTACT	
		MATERIAL WEIGHT PER PC.	TAC-1	
		GRADE "A"		
		TYPE & TEMPER		
		HEAT TREAT. SPEC.		
		SILVER PLATE S245		
		IRIDITE S423		
		FINISH & SPEC. NO.		

ISSUE	ITEM	CHANGED FROM	DATE	CN. NO.	DRAFTS	CHECKER	ENG. APP.
B	1	FINISH WAS SILVER PLATE .001	12.30.64	13013	HRB		
A	2	5/16 WAS 1/4	3/14/55	1	P.B.		
A	1	1/32 TOLL. WAS 1/16					

TOLERANCES		SCALE
ALL OTHERS	DEC. DIM. ± FRAC. DIM. ± 1/64 ANGULAR DIM. ±	DRILL, PUNCH, COMMERCIAL STOCK SIZES AND MANUFACTURERS TOLERANCES ARE NOT INCLUDED.

DRAWN	ELEC. DES. APP.	MECH. DES. APP.
ARB	ARB	WDE
ARB	ARB	WDE
CHECKED		FINAL APPROVAL
		MS-457 B

IF IT IS FOUND DESIRABLE TO CHANGE ANY TOLERANCE OR OTHER DETAIL SPECIFIED ON THIS DRAWING NOTIFY THE PURCHASER PROMPTLY.

MS-458 A

MAXIMUM ALLOWABLE TOLERANCES HAVE BEEN DETERMINED AND DEVIATIONS WILL BE CAUSE FOR REJECTION. REMOVE ALL BURRS AND SHARP EDGES

REQ. PER UNIT

USED ON

MODEL

PROJECT NO.

ASS'Y. NO.

DATE

6

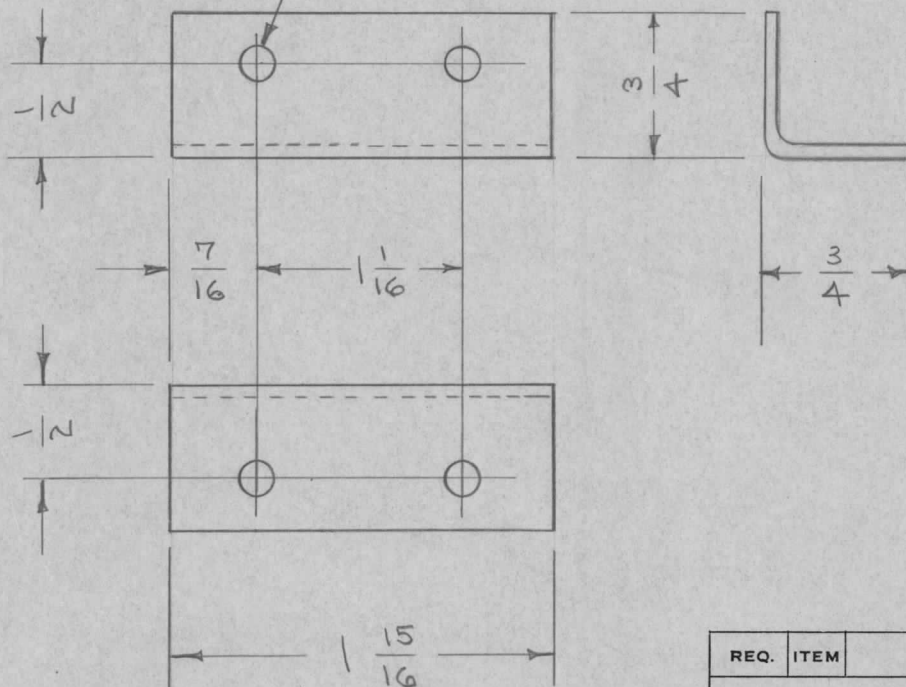
TAC-1

132

A-719 A-720
A-717 A-722

1-22-54

$\frac{7}{32}$ (.218) D. 4 REQ.



UNLESS OTHERWISE SPECIFIED
DIMENSIONS ARE IN INCHES AND INCLUDE
CHEMICALLY APPLIED OR PLATED FINISHES

DECIMALS
.X ± .05
.XX ± .01
.XXX ± .005

TOLERANCES

FRACTIONS
± 1/64
ANGLES
± 0° 30'

CUT HERE
GUARANTEED
2-66

REQ.	ITEM	PART NO.	DESCRIPTION	SYMBOL
		.081	THE TECHNICAL MATERIEL CORP. MAMARONECK, NEW YORK	
		ALUMINUM	BRACKET, CEN. SUP.	
		52S H32	TAC-1	
		TYPE & TEMPER	C.D.D. 11-19-53	
		HEAT TREAT. SPEC.	AMB	WDC
		FINISH & SPEC. NO.	7. B	WDC
			CHECKED	FINAL APPROVAL
				MS-458 A

A 1 8404-IRIDITE WAS 12-7 12-7
S101-CAUSTIC DIP 59 59 P EMN

ISSUE ITEM CHANGED FROM DATE CN. NO. DRAFTS CHECKER ENG. APP.

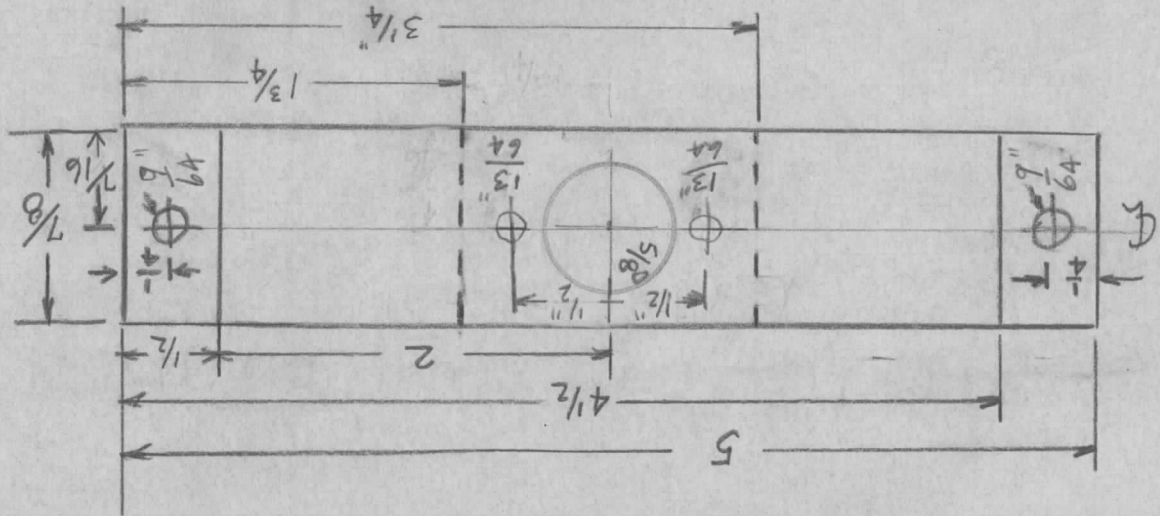
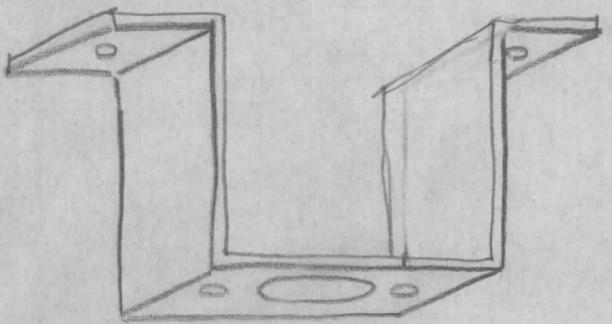
TOLERANCES SCALE

ALL OTHERS DEC. DIM. ±
FRAC. DIM. ±
ANGULAR DIM. ±
DRILL, PUNCH, COMMERCIAL STOCK
SIZES AND MANUFACTURERS
TOLERANCES ARE NOT INCLUDED.

MS-473

UNLESS OTHERWISE SPECIFIED	
DIMENSIONS ARE IN INCHES AND INCLUDE	
CHEMICALLY APPLIED OR PLATED FINISHES	
DECIMALS	FRACTIONS
.X ± .05	± 1/64
.XX ± .01	ANGLES
.XXX ± .005	± 90° 30'

CUT HERE
GUARANTEED
2-66



One per Unit
 USE: 16 Ga 1/4 Hard Alum
 Finish: Alkali etch + lacquer
 MAT SIZE 7/8" X 5"

WAS AWS039
 1/26/54

DATE	12/18/50
DRN.	CMH
CHKD.	R.B.
APPD.	<i>fw</i>

BRACKET FOR
 VARISTOR-TAK.1

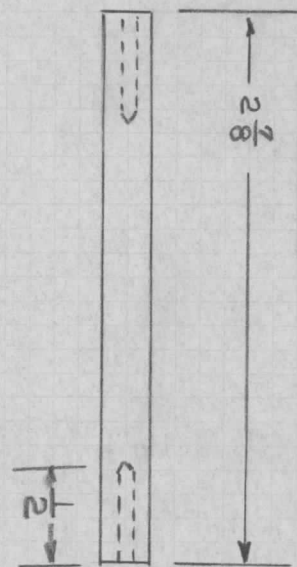
THE TECHNICAL MATERIEL	
CORPORATION	
MAMARONECK, NEW YORK	
SHEET	OF
NO.	MS-473

MS-478

UNLESS OTHERWISE SPECIFIED DIMENSIONS ARE IN INCHES AND INCLUDE CHEMICALLY APPLIED OR PLATED FINISHES	
DECIMALS	TOLERANCES
.X ± .05	FRACTIONS
.XX ± .01	± 1/64
.XXX ± .005	ANGLES
	± 0° 30'

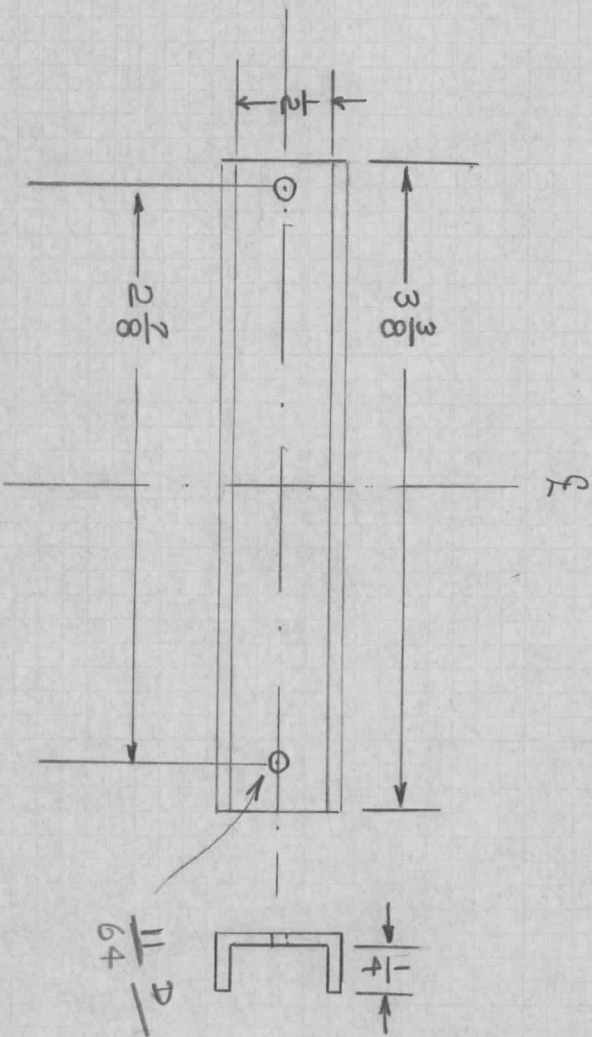
CUT HERE
GUARANTEED
2-66

MATERIAL 1/4" BR. ROD
FINISH BR. N.P.
2 PER UNIT



DRILL & TAP BOTH
ENDS FOR 6-32 SCREW

7



MATERIAL 1/4" HARD 16 GA. ALUMINUM
FINISH - ALKALI ETCH - LAQUER
1 PER UNIT

WAS AMS063
1/26/54

DATE	1/24/51	CLAMP	THE TECHNICAL MATERIEL
DRN.	A.R.B	MAGNETIC DIODE COIL	CORPORATION
CHKD.		TAK-1	MAMARONECK, NEW YORK
APPD.	fw		
			SHEET
			OF
			NO. MS-478

IF IT IS FOUND DESIRABLE TO CHANGE ANY TOLERANCE OR OTHER DETAIL SPECIFIED ON THIS DRAWING NOTIFY THE PURCHASER PROMPTLY.

MS-490 B

MAXIMUM ALLOWABLE TOLERANCES HAVE BEEN DETERMINED AND DEVIATIONS WILL BE CAUSE FOR REJECTION. REMOVE ALL BURRS AND SHARP EDGES

REQ. PER UNIT

USED ON

5

MODEL

PROJECT NO.

ASS'Y. NO.

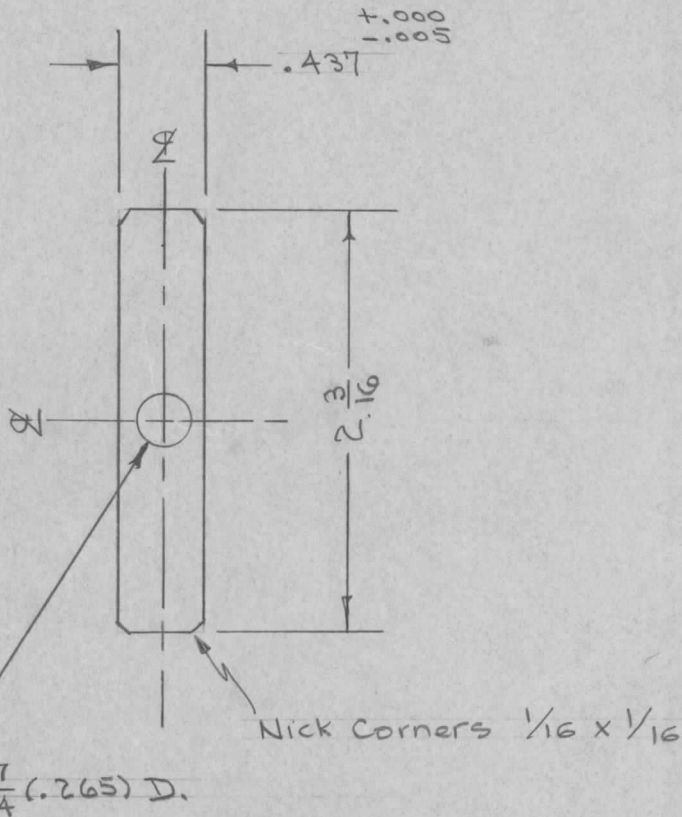
DATE

TAC-1

132

A-667

12-29-53



REQ.	ITEM	PART NO.	DESCRIPTION	SYMBOL
		.016	THE TECHNICAL MATERIEL CORP. MAMARONECK, NEW YORK	
		STOCK SIZE		
		PHOSPHUR BRONZE	CONTACT LEAF, DOUBLE	
		MATERIAL		
		WEIGHT PER PC.		
		SPRING TEMPER - GRADE A	TAC-1	
		TYPE & TEMPER	e.d.d.	
			DRAWN	ELEC. DES. APP.
			CHECKED	MECH. DES. APP.
		HEAT TREAT. SPEC.		
		FINISH & SPEC. NO.		

B	2	Temp was Commercial Soft	1/7/61	3933	RU	JCB	
A	1	3. SIZE WAS .014 MAT'L WAS NICKEL SILVER	2/9/57	1	16	JCB	
ISSUE	ITEM	CHANGED FROM	DATE	CN. NO.	DRAFTS	CHECKER	ENG. APP.

TOLERANCES		SCALE	DRILL, PUNCH, COMMERCIAL STOCK SIZES AND MANUFACTURERS TOLERANCES ARE NOT INCLUDED.				
ALL OTHERS	DEC. DIM. ± 1/64						
	FRAC. DIM. ± 1/64						
	ANGULAR DIM. ±						

IF IT IS FOUND DESIRABLE TO CHANGE ANY TOLERANCE OR OTHER DETAIL SPECIFIED ON THIS DRAWING NOTIFY THE PURCHASER PROMPTLY.

MS-493 B

MAXIMUM ALLOWABLE TOLERANCES HAVE BEEN DETERMINED AND DEVIATIONS WILL BE CAUSE FOR REJECTION. REMOVE ALL BURRS AND SHARP EDGES

REQ. PER UNIT

USED ON

5

MODEL

TAC-1

PROJECT NO.

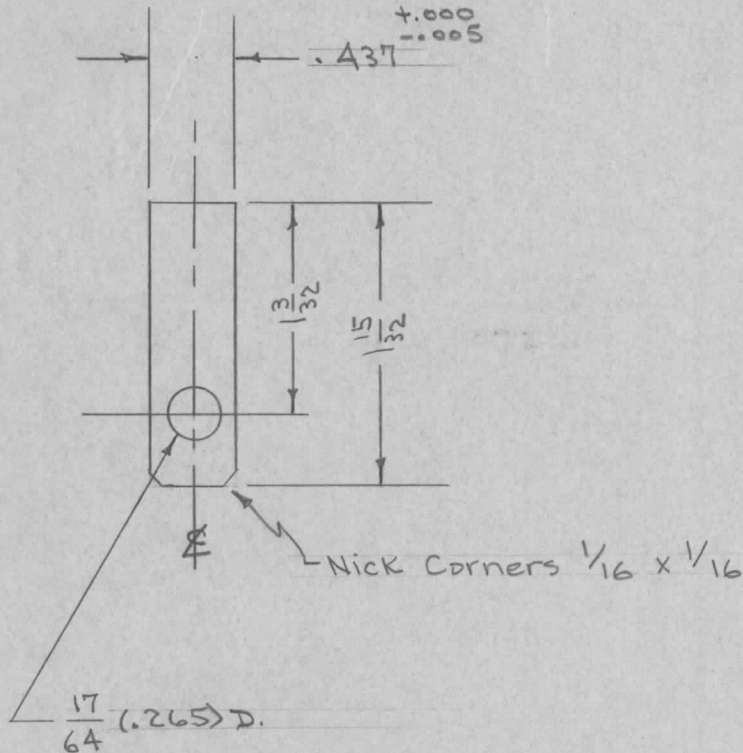
132

ASS'Y. NO.

A-666

DATE

12-29-53



REQ.	ITEM	PART NO.	DESCRIPTION	SYMBOL
		.014	THE TECHNICAL MATERIEL CORP. MAMARONECK, NEW YORK	
		STOCK SIZE	CONTACT LEAF, SINGLE	
		PHOSPHOR BRONZE GRADE A	TAC-1	
		MATERIAL		
		WEIGHT PER PC.		
		SPRING TEMPER		
		TYPE & TEMPER	C.D.D.	
			APP	WDC
			DRAWN	ELEC. DES. APP.
			JAR	CYB
		HEAT TREAT. SPEC.	CHECKED	FINAL APPROVAL
		FINISH & SPEC. NO.		
			MS-493	B

ISSUE	ITEM	CHANGED FROM	DATE	CN. NO.	DRAFTS	CHECKER	ENG. APP.
B	2	TYPE WAS COMMERCIAL SOFT	6-20-61	5100	W.A.F.	JCB	ETM
A	1	MAT'L. WAS NICKEL SILVER	4/9/57	1	15	JAR	
		Corner Nicks Added					

TOLERANCES		SCALE	DRILL, PUNCH, COMMERCIAL STOCK SIZES AND MANUFACTURERS TOLERANCES ARE NOT INCLUDED.
ALL OTHERS	DEC. DIM. ± FRAC. DIM. ± 1/64 ANGULAR DIM. ±		

IF IT IS FOUND DESIRABLE TO CHANGE ANY TOLERANCE OR OTHER DETAIL SPECIFIED ON THIS DRAWING NOTIFY THE PURCHASER PROMPTLY.

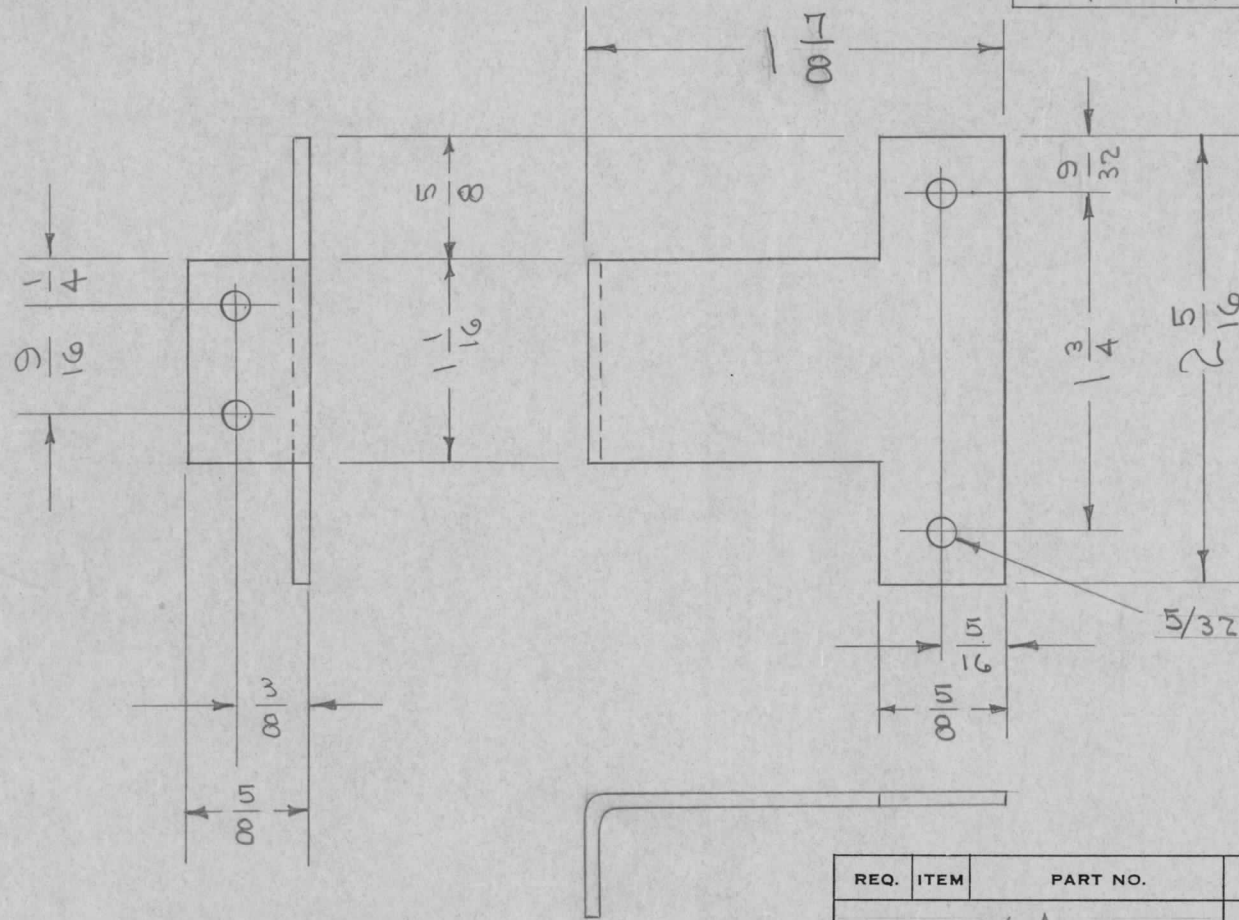
MS-495 B

MAXIMUM ALLOWABLE TOLERANCES HAVE BEEN DETERMINED AND DEVIATIONS WILL BE CAUSE FOR REJECTION. REMOVE ALL BURRS AND SHARP EDGES

REQ. PER UNIT

USED ON

MODEL	PROJECT NO.	ASS'Y. NO.	DATE
TAC-1	132	A-717	1-21-54



BLANK SIZE
2 5/16 X 2 13/32

5/32 (.156) D. 4 HOLES REQ.

REQ.	ITEM	PART NO.	DESCRIPTION	SYMBOL
		.064	THE TECHNICAL MATERIEL CORP. MAMARONECK. NEW YORK	BRACKET, THERMO COUPLE
		STOCK SIZE		
		ALUMINUM #		
		MATERIAL	WEIGHT PER PC.	TAC-1
		52S H32		
		TYPE & TEMPER		
		#		
		HEAT TREAT. SPEC.		
		S404 IRIDITE		
		FINISH & SPEC. NO.		

B	1	S404-IRIDITE WAS 5101-CAUSTIC	12-7 59	100	P		EMN
A	1	1 7/8 WAS 2 7/8	3/10/54	1	C.D.D	ADD	WDE
ISSUE	ITEM	CHANGED FROM	DATE	CN. NO.	DRAFTS	CHECKER	ENG. APP.

TOLERANCES		SCALE	
ALL OTHERS	DEC. DIM. ± FRAC. DIM. ± 1/64 ANGULAR DIM. ±	DRILL, PUNCH, COMMERCIAL STOCK SIZES AND MANUFACTURERS TOLERANCES ARE NOT INCLUDED.	