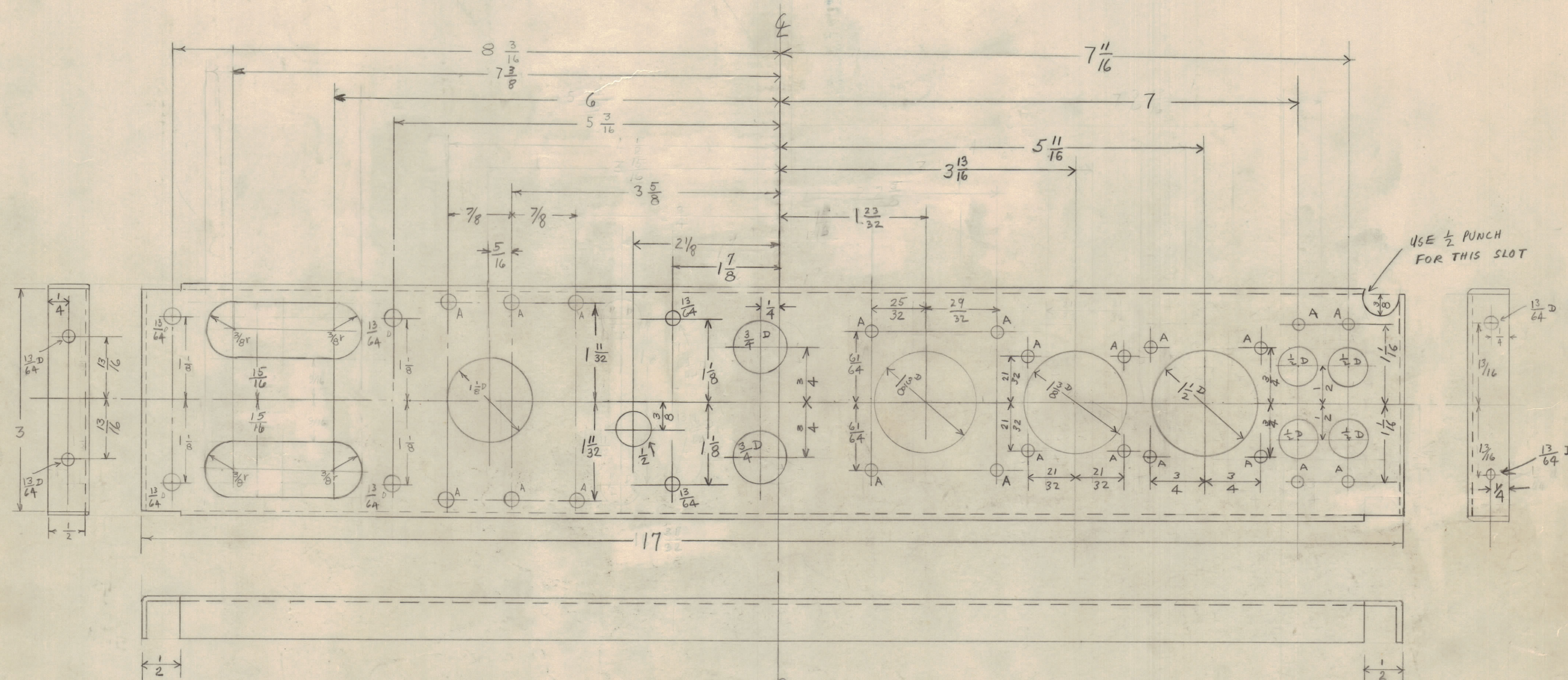


NOTICE TO PERSONS RECEIVING THIS DRAWING

THE TECHNICAL MATERIEL CORPORATION claims proprietary right in the material disclosed hereon. This drawing is issued in confidence for engineering information only and may not be reproduced or used to manufacture anything shown hereon without permission from THE TECHNICAL MATERIEL CORPORATION to the user. This drawing is loaned for mutual assistance and is subject to recall at any time.

Property of:  
THE TECHNICAL MATERIEL CORPORATION  
MAMARONECK, NEW YORK



A =  $\frac{1}{64}$  PUNCH 22 Holes Reg'd

Material - 16 Ga.  $\frac{1}{4}$  Hard Alum.

Finish - Alkali Etch & Lacquer

One per unit

MAT Size  $4" \times 17\frac{15}{16}$

THE TECHNICAL MATERIEL CORPORATION  
121 SPENCER PLACE  
MAMARONECK, N. Y.

CENTER CHASSIS ELEMENT

MODEL TAK-1

FULL SCALE TOL  $\frac{1}{64}"$

DWNS: cmh APPVD: *hu*

CHKD: RB

DATE 1/4/51 Dwg No. MS-480

WAS CMS022  
1/26/54