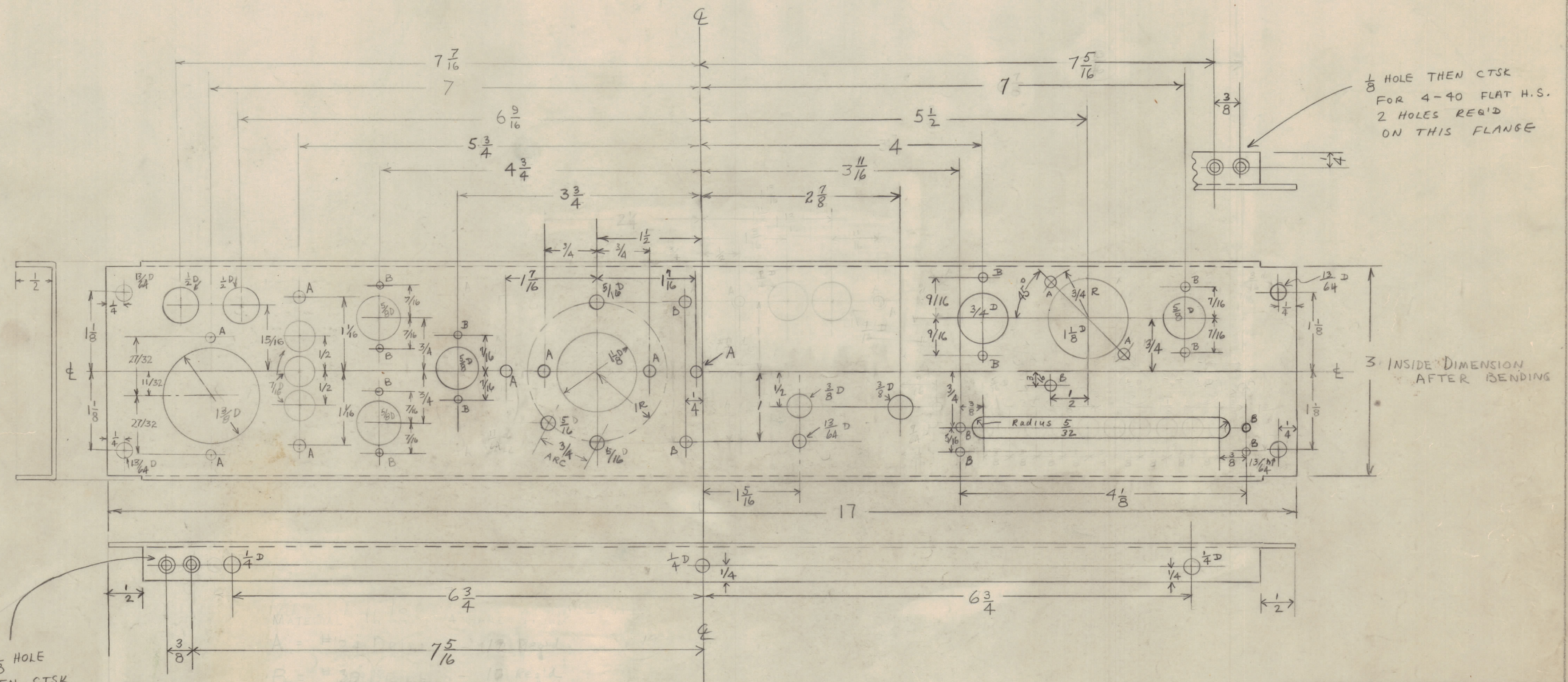


NOTICE TO PERSONS RECEIVING THIS DRAWING

THE TECHNICAL MATERIEL CORPORATION claims proprietary right in the material disclosed hereon. This drawing is issued in confidence for engineering information only and may not be reproduced or used to manufacture anything shown hereon without permission from THE TECHNICAL MATERIEL CORPORATION to the user. This drawing is loaned for mutual assistance and is subject to recall at any time.

Property of:  
 THE TECHNICAL MATERIEL CORPORATION  
 MAMARONECK, NEW YORK



$\frac{1}{8}$  HOLE THEN CTSK FOR 4-40 FLAT H.S. 2 HOLES REQ'D ON THIS FLANGE

FINISH - ALKALI ETCHED & LACQUERED

ONE PER UNIT  
 MAT size 4" x 17"  
 A =  $\frac{11}{64}$  PUNCH  
 B =  $\frac{9}{64}$  PUNCH  
 USE: 16 GA  $\frac{1}{4}$  HARD ALUM

FULL SCALE TOL $\frac{1}{64}$ "	
REAR CHASSIS ELEMENT MODEL TAK-1	
THE TECHNICAL MATERIEL CORPORATION 121 SPENCER PLACE MAMARONECK, N. Y.	
DWN BY: CMH	APPVD: <i>fm</i>
CHECKED: R.B.	
DATE 12/14/50	Dwg. No. MS-479
WAS CMS021 1/26/54	