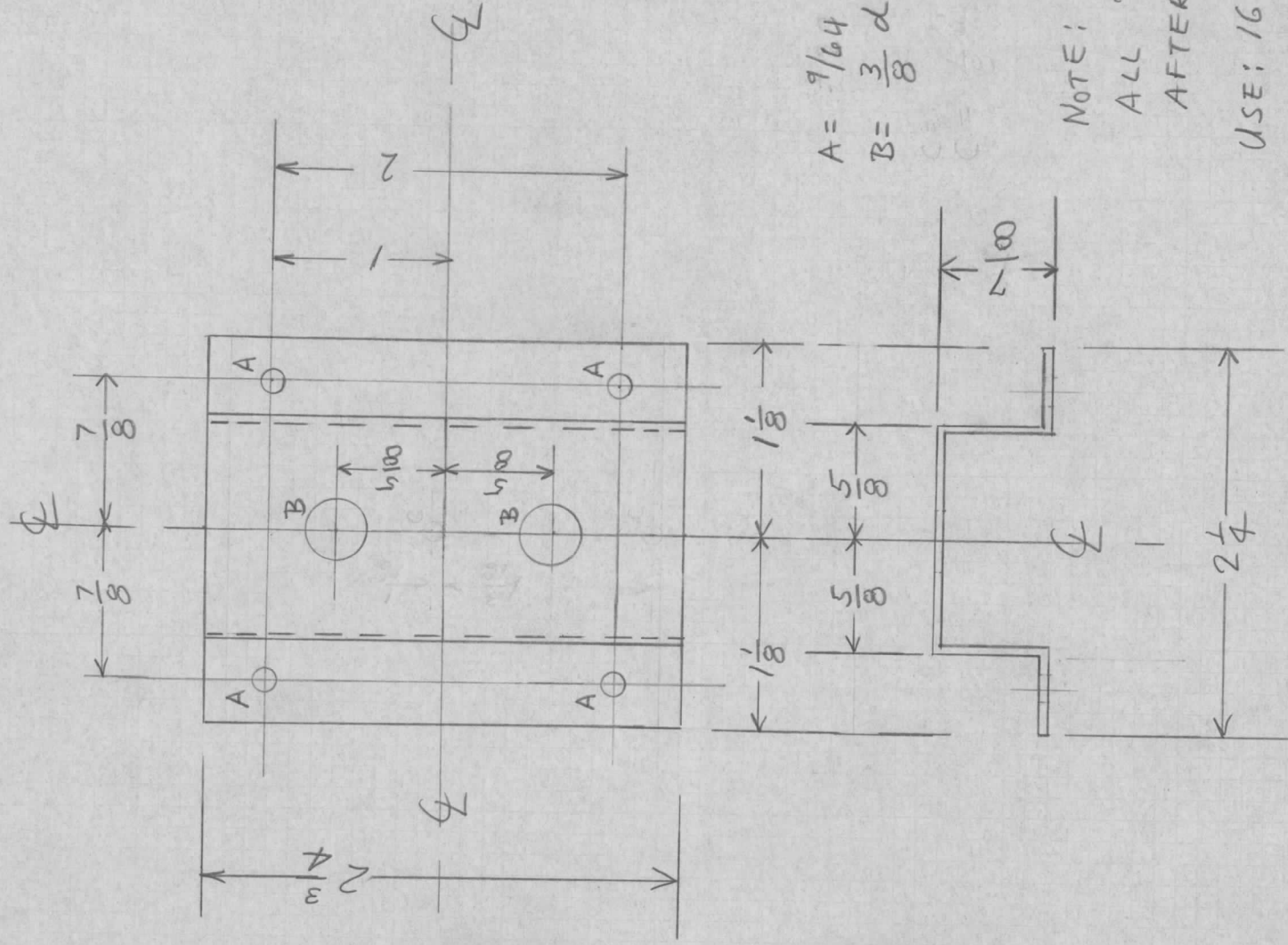


MS-424



A = $\frac{1}{16}$ 4 PUNCH 4 REQ'D
 B = $\frac{3}{8}$ d 2 REQ'D

NOTE:

ALL DIMENSIONS
 AFTER BENDING

USE: 16 GA $\frac{1}{4}$ HARD
 ALUM

FINISH: ALKALI ETCH
 LACQUER FINISH

ONE PER UNIT

WAS AMS056

CUT HERE
 2-66
 GUARANTEED

DECIMALS	TOLERANCES	FRACTIONS
.X ± .05		± 1/64
.XX ± .01		ANGLES
.XXX ± .005		± 0° 30'

DATE JAN. 15, 1951

DRN. P. B.

CHKD. R. B.

APPD. *fm*

Potentiometer Brkt.

TKM-RC

POTENTIOMETER BRACKET

THE TECHNICAL MATERIEL
 CORPORATION
 MAMARONECK, NEW YORK

SHEET OF NO. MS-424