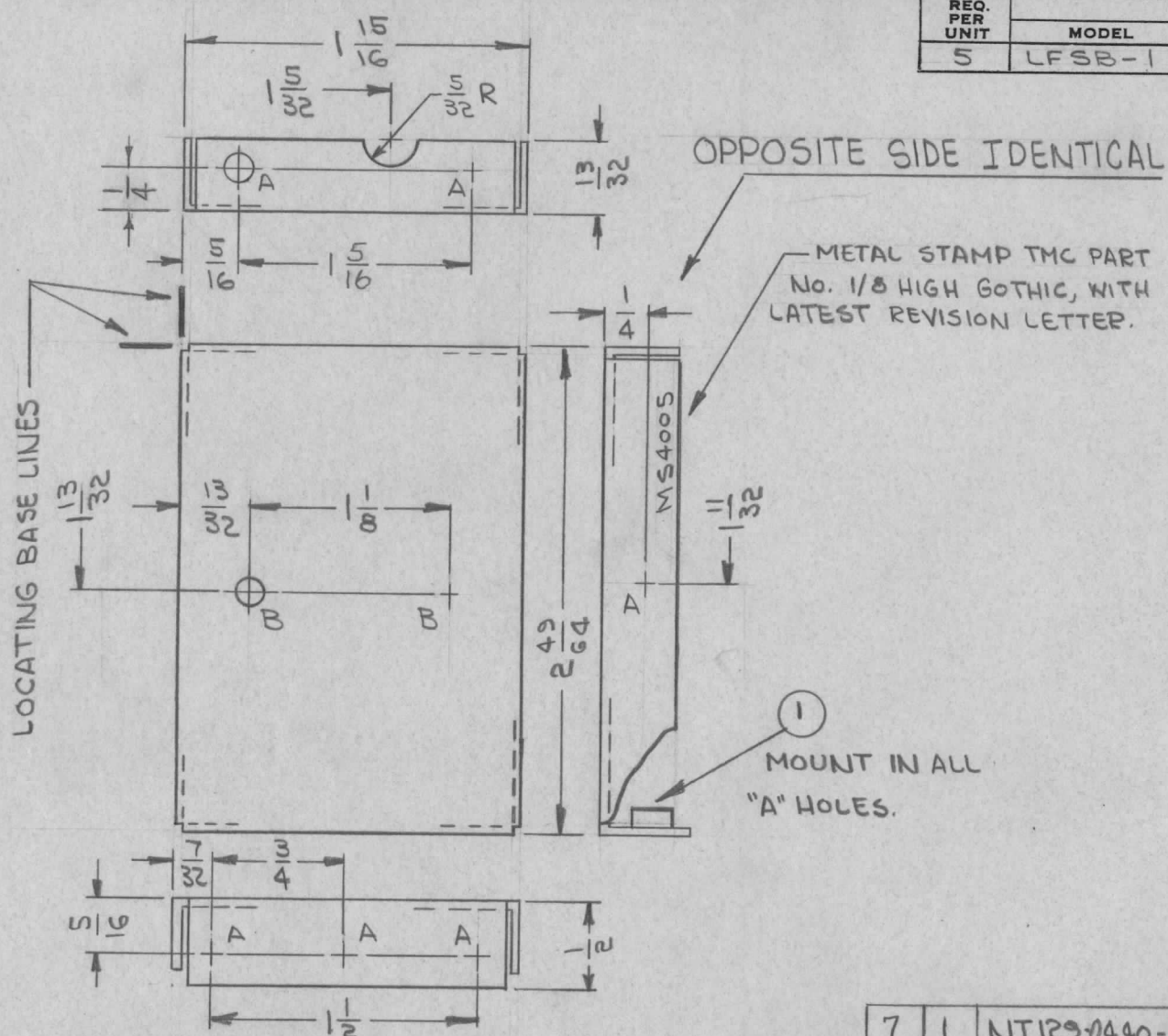


REQ. PER UNIT	USED ON			MS4005 \emptyset
	MODEL	ASS'Y. NO.	DATE	
5	LFSB-1		8-24-64	



HOLE	DESCRIPTION	REQ.
A	.161-.164 DIA	7
B	5/32 DIA	2

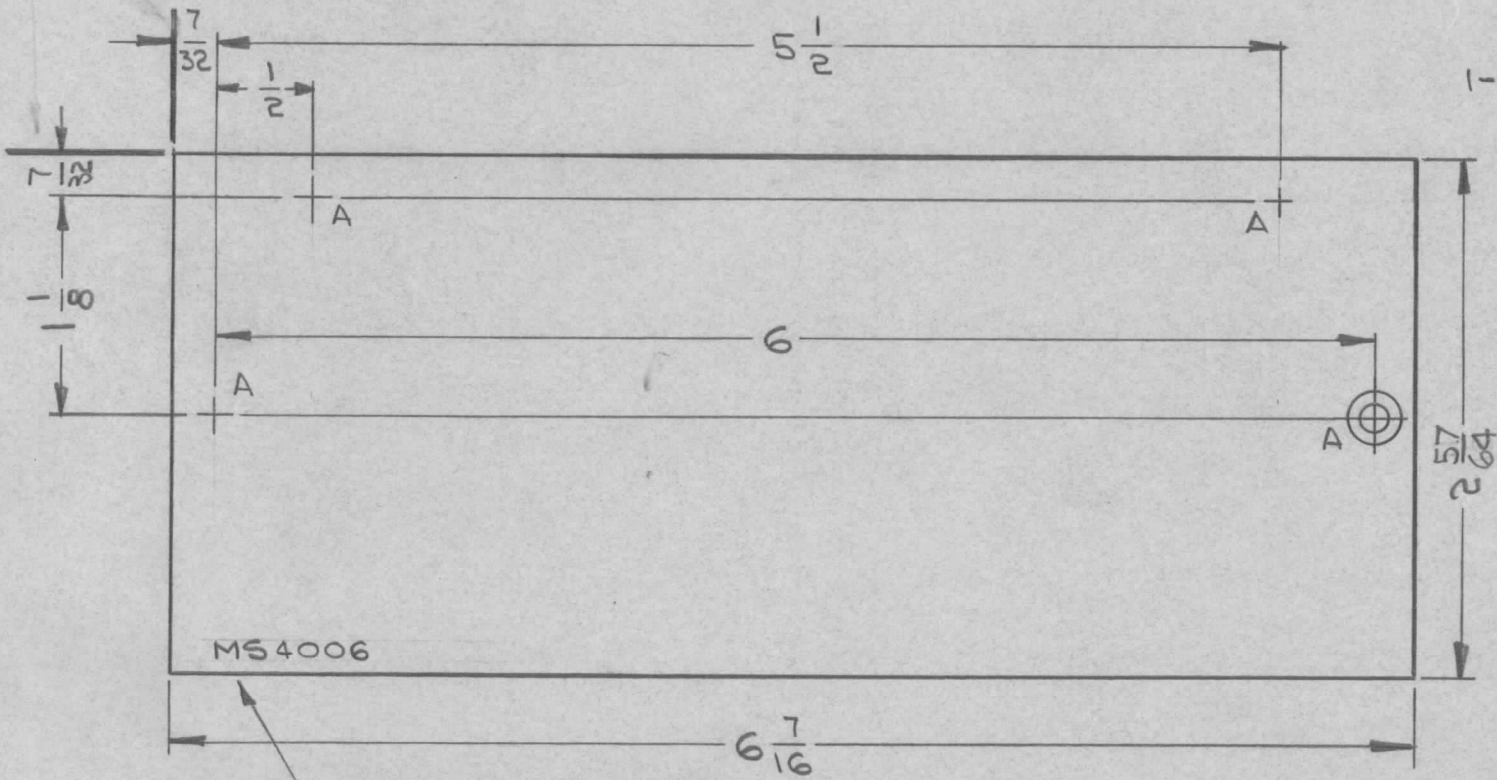
UNLESS OTHERWISE SPECIFIED:

1. USE MATERIAL THICKNESS FOR MAXIMUM RADIUS ON ALL BENDS
2. ALL ANGULAR BENDS 90 DEGREES
3. REMOVE ALL BURRS AND SHARP EDGES
4. MOUNT INSERTS AFTER FINISHING

\emptyset	ORIGINAL RELEASE FOR PRODUCTION	9-28-64	\emptyset	gcl		
X ₁	1 5/16 WAS 1 1/2, 1/4 ADDED	9-8-64	X ₁	gcl		
X	EXPER. RELEASE	8-24-64	X	gcl		
SYM	DESCRIPTION	DATE	CH. NO.	DRAFTS	CHECKER	ENG. APP.
UNLESS OTHERWISE SPECIFIED DIMENSIONS ARE IN INCHES AND INCLUDE CHEMICALLY APPLIED OR PLATED FINISHES		SCALE 1:1				
DECIMALS .X \pm .05 .XX \pm .01 .XXX \pm .005	TOLERANCES	FRACTIONS \pm 1/64 ANGLES \pm 0° 30'	CODE A			

7	1	NT1290440-3	NUT, ROUND, SWAGE TYPE	A
REQ. ITEM	PART NO.		DESCRIPTION	SYMBOL
	.040		THE TECHNICAL MATERIEL CORP. MAMARONECK, NEW YORK	
	STOCK SIZE			
	ALUMINIUM			
	MATERIAL		PLATE, REAR (SPECTRUM FILTER)	
5052-H32			DRAWN: <i>[Signature]</i> @ 9-15-64 CHECKED: <i>[Signature]</i> FINAL APPROVAL: <i>[Signature]</i>	
TYPE & TEMPER		HEAT TREAT. SPEC.		
S404 YELLOW IRIDITE				
FINISH & SPEC. NO.		ELEC. DES. APP.	MECH. DES. APP.	MS4005 \emptyset

REQ. PER UNIT	USED ON		MS4006	Ø
	MODEL	ASSY. NO.		
10	LFSB-1		8-24-64	



UNLESS OTHERWISE SPEC.
1-REMOVE ALL BURRS &
SHARP EDGES.

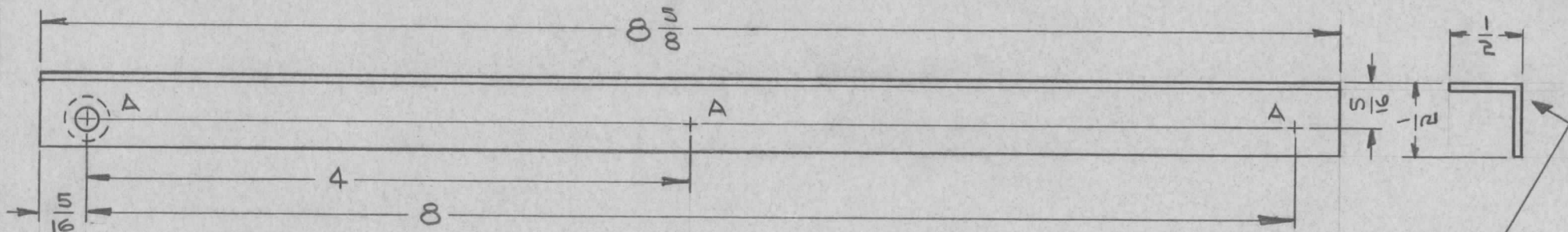
MS4006

METAL STAMP TMC
PART NO. 1/8 HIGH
GOTHIC, WITH LATEST
REVISION LETTER.

HOLE	DESCRIPTION	REQ
A	.120 DIA HOLE, C'SINK 82° TO .230 DIA	4

SYM	DESCRIPTION	DATE	CH. NO.	DRAFTS	CHECKER	ENG. APP.	REQ. ITEM	PART NO.	GELLMAN	DESCRIPTION	SYMBOL
Ø	ORIGINAL RELEASE FOR PRODUCTION	9.28.64	Ø	ØL				.032 THK		THE TECHNICAL MATERIEL CORP. MAMARONECK, NEW YORK COVER, SIDE (SPECTRUM FILTER)	
X1	2 ⁵⁷ / ₆₄ WAS 2 ¹¹ / ₁₆	9/11/64	X1	@				STOCK SIZE			
X	EXPER. RELEASE	8-24-64	X	<i>[Signature]</i>				ALUMINUM			
								MATERIAL			
	UNLESS OTHERWISE SPECIFIED DIMENSIONS ARE IN INCHES AND INCLUDE CHEMICALLY APPLIED OR PLATED FINISHES	SCALE	1:1					5052-H32	<i>[Signature]</i> @ 9-15-64	<i>[Signature]</i>	
DECIMALS .X ± .05 .XX ± .01 .XXX ± .005	TOLERANCES	FRACTIONS ± 1/64 ANGLES ± 0° 30'	CODE A				TYPE & TEMPER	HEAT TREAT. SPEC.	DRAWN	CHECKED	FINAL APPROVAL
							5404-YELLOW IRIDITE		<i>[Signature]</i>		MS4006 Ø
							FINISH & SPEC. NO.		ELEC. DES. APP.	MECH. DES. APP.	

REQ. PER UNIT	USED ON			MS4009 \emptyset
	MODEL	ASS'Y. NO.	DATE	
11	LFSB-1		8-28-64	



METAL STAMP TMC
PART NO. 1/8 HIGH GOTHIC,
WITH LATEST REVISION
LETTER, ON REAR.

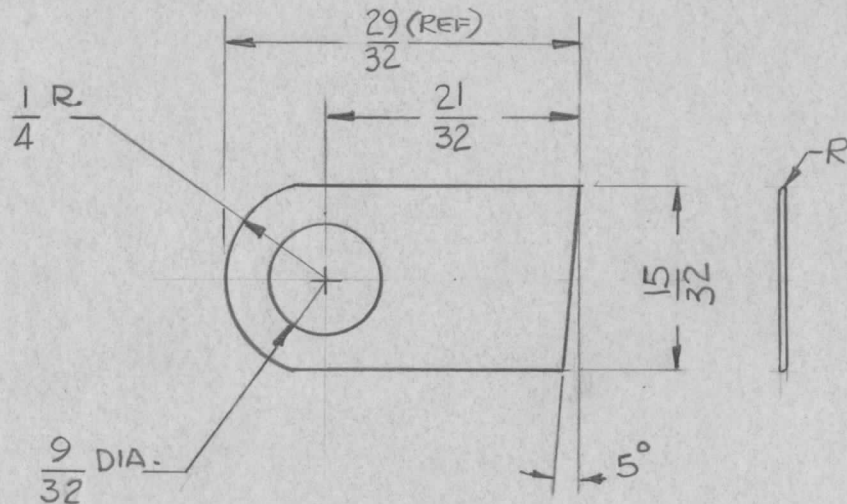
UNLESS OTHERWISE SPECIFIED:

1. USE MATERIAL THICKNESS FOR MAXIMUM RADIUS ON ALL BENDS
2. ALL ANGULAR BENDS 90 DEGREES
3. REMOVE ALL BURRS AND SHARP EDGES
4. MOUNT INSERTS AFTER FINISHING

HOLE	DESCRIPTION	REQ.
A	.144 DIA. HOLE, C'SINK 82° TO .284 DIA, ON REAR. (6-32)	3

SYM	DESCRIPTION	DATE	CH. NO.	DRAFTS	CHECKER	ENG. APP.	REQ. ITEM	PART NO.	GELMAN	DESCRIPTION	SYMBOL	
\emptyset	ORIGINAL RELEASE FOR PRODUCTION	9.28.64	\emptyset	g.f.				.064		THE TECHNICAL MATERIEL CORP. MAMARONECK, NEW YORK		
X	EXP RELEASE	8-28-64	X	ghm				ALUMINUM		SUPPORT, PRINTED CIRCUIT		
	UNLESS OTHERWISE SPECIFIED DIMENSIONS ARE IN INCHES AND INCLUDE CHEMICALLY APPLIED OR PLATED FINISHES	SCALE	1:1					5052-H32		ly. Swan @	RJC	
	DECIMALS .X \pm .05 .XX \pm .01 .XXX \pm .005	FRACTIONS \pm 1/64 ANGLES \pm 0° 30'	CODE	A				5404-YELLOW IRIDITE				MS4009 \emptyset
	TOLERANCES						FINISH & SPEC. NO.		ELEC. DES. APP.	MECH. DES. APP.		

REQ. PER UNIT	USED ON			MS4013	Ø
	MODEL	ASS'Y. NO.	DATE		
2	GPT-40K	A3535	9-3-64		



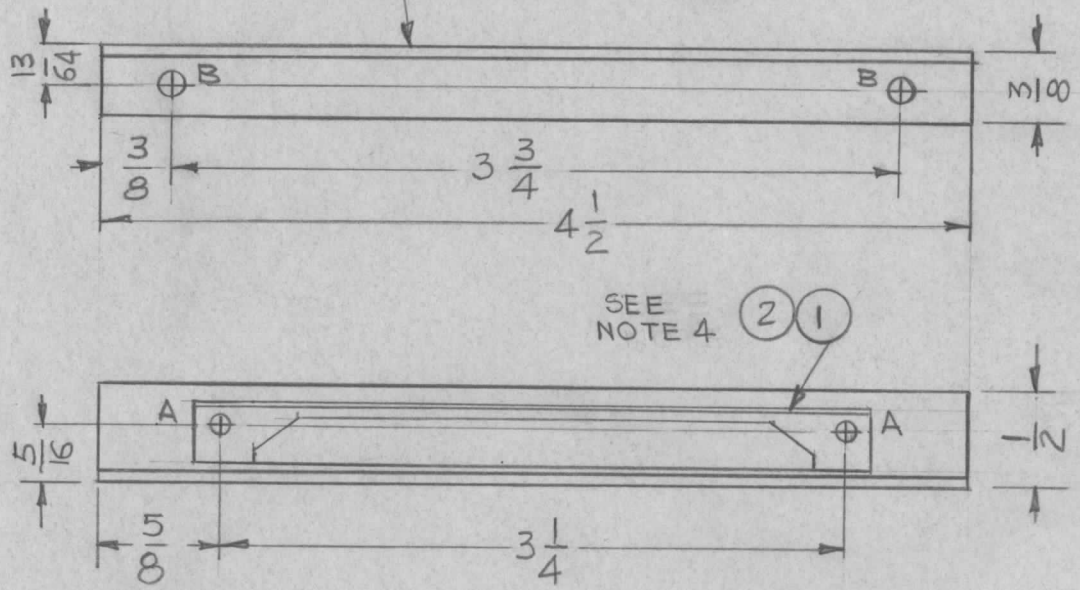
REMOVE ALL BURRS AND SHARP EDGES

REQ. ITEM	PART NO.	F. BUDETTI	DESCRIPTION	SYMBOL						
	.050 THK.		THE TECHNICAL MATERIEL CORP. MAMARONECK, NEW YORK							
Ø	ORIGINAL RELEASE FOR PRODUCTION	9-4-64	Ø JL							
X	EXP. RELEASE	9-3-64	# G.D.L							
	COPPER		STRAP, CONNECTOR							
SYM	DESCRIPTION	DATE	CH. NO.	DRAFTS	CHECKER	ENG. APP.	MATERIAL			
UNLESS OTHERWISE SPECIFIED DIMENSIONS ARE IN INCHES AND INCLUDE CHEMICALLY APPLIED OR PLATED FINISHES		SCALE		2:1		1/2 HARD		G.D.L	@ 9-3-64	JTC
DECIMALS .X ± .05 .XX ± .01 .XXX ± .005	TOLERANCES	FRACTIONS ± 1/64 ANGLES ± 0° 30'	CODE A	TYPE & TEMPER		HEAT TREAT. SPEC.	DRAWN	CHECKED	FINAL APPROVAL	
				NATURAL			OB	JTC	MS4013 Ø	
				FINISH & SPEC. NO.		ELEC. DES. APP.	MECH. DES. APP.			

REQ. PER UNIT	USED ON		
	MODEL	ASS'Y. NO.	DATE
2	LESB-1		9-1-64

MS4014 A

METAL STAMP TMC PART NO. 1/8
HIGH GOTHIC W/LATEST REVISION LETTER



HOLE	DESCRIPTION	REQ.
A	.067 DIA.	2
B	1/8 DIA.	2

UNLESS OTHERWISE SPECIFIED:

1. USE MATERIAL THICKNESS FOR MAXIMUM RADIUS ON ALL BENDS
2. ALL ANGULAR BENDS 90 DEGREES
3. REMOVE ALL BURRS AND SHARP EDGES
4. MOUNT INSERTS AFTER FINISHING

2	2	EY100-5	EYELET, ROLLED FLANGE	A
1	1	CU157-4	RETAINER, P.C. BOARD	A
REQ. ITEM		PART NO.	GELLMAN DESCRIPTION	SYMBOL

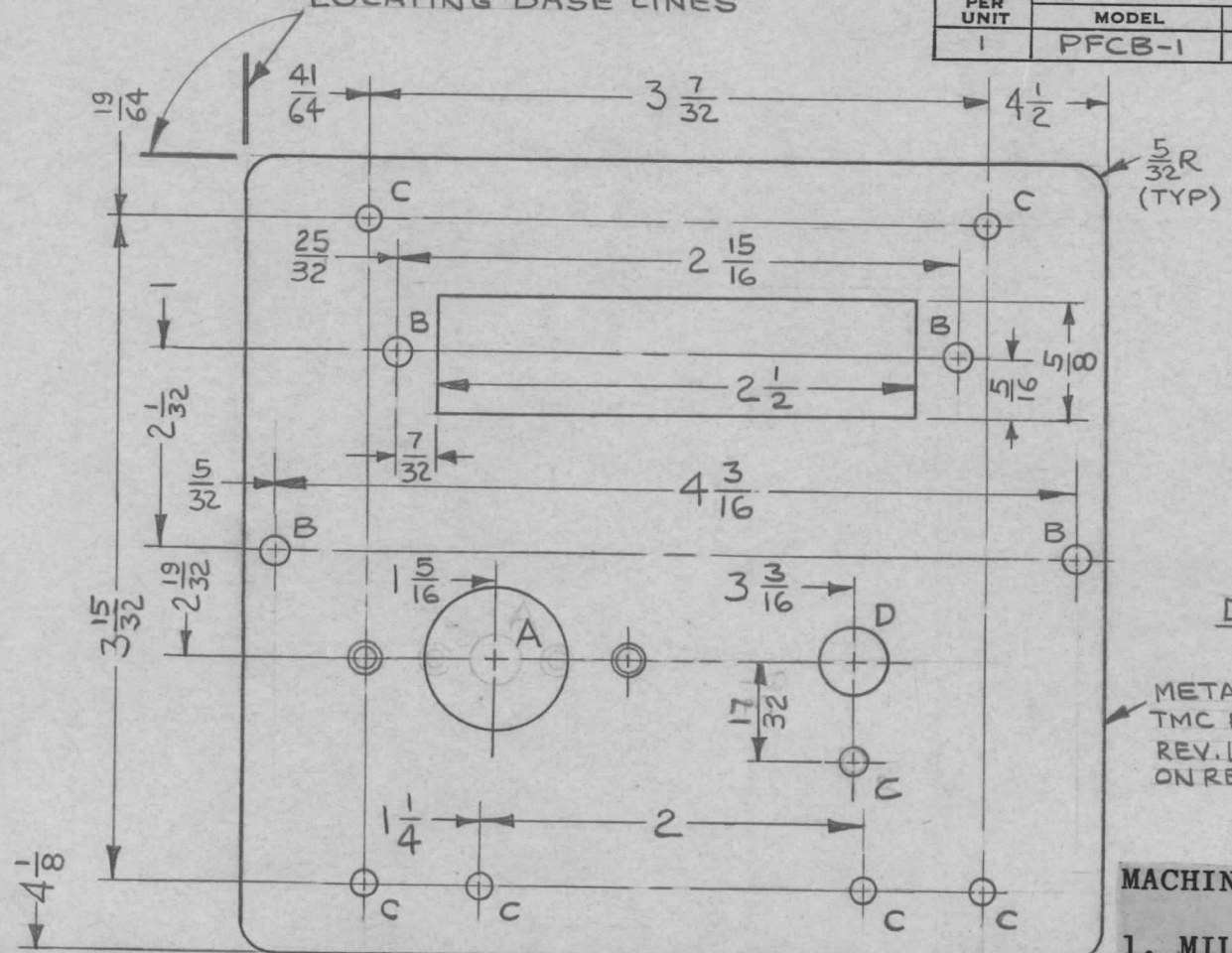
A	IT. 1 WAS CU 157-1. IT. 2 WAS EY101-3. A HOLE WAS .090 DIA.	6-28-65	14359	D.V.V.		
Ø	ORIGINAL RELEASE FOR PRODUCTION	9-28-64	Ø	DL		
X	EXP. RELEASE	9-1-64	→	G.D.L.		
SYM	DESCRIPTION	DATE	CH. NO.	DRAFTS	CHECKER	ENG. APP.
UNLESS OTHERWISE SPECIFIED DIMENSIONS ARE IN INCHES AND INCLUDE CHEMICALLY APPLIED OR PLATED FINISHES		SCALE 1:1				
DECIMALS .X ± .05 .XX ± .01 .XXX ± .005	TOLERANCES	FRACTIONS ± 1/64 ANGLES ± 0° 30'	CODE A			

.064 THK		THE TECHNICAL MATERIEL CORP. MAMARONECK, NEW YORK			
ALUMINUM		BRACKET, SUPPORT DUMMY CARD			
MATERIAL					
5052-H32		G.D.L. 9-1-64	@	RAC	
TYPE & TEMPER	HEAT TREAT. SPEC.	DRAWN	CHECKED	FINAL APPROVAL	
5404 YEL. IRIDITE				MS4014 A	
FINISH & SPEC. NO.		ELEC. DES. APP.	MECH. DES. APP.		

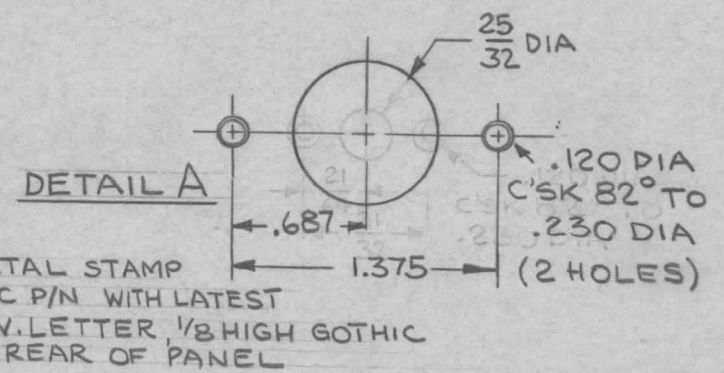
LOCATING BASE LINES

REQ. PER UNIT	USED ON		
	MODEL	ASS'Y. NO.	DATE
1	PFCB-1		

MS4030 A



HOLE	DESCRIPTION	REQ
A	SEE DETAIL	1
B	5/32 DIA	4
C	9/64 DIA	7
D	3/8 DIA	1



METAL STAMP
TMC P/N WITH LATEST
REV. LETTER, 1/8 HIGH GOTHIC
ON REAR OF PANEL

- MACHINING:**
1. MILL ALL EDGES.

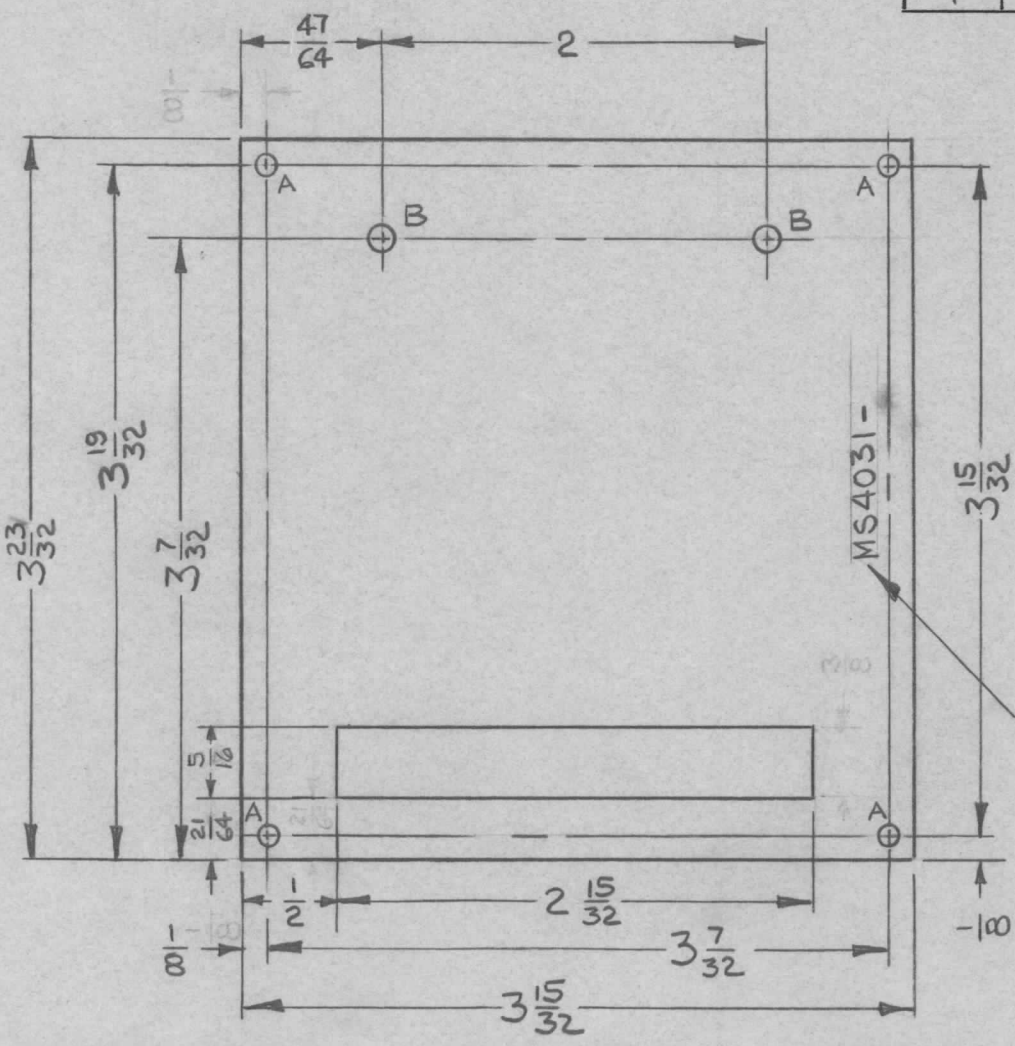
FINISH NOTES:

1. S404 - IRIDITE 14-2 AL-COAT.
2. S114 - ZINC CHROMATE PRIMER) FRONT AND
3. S115 - SMOOTH GRAY ENAMEL) EDGES ONLY

2. HOLES MUST BE DRILLED, UNLESS OTHERWISE SPECIFIED.
3. LATERAL BOW OF PANEL MUST BE KEPT TO .031 TOLERANCE.
4. PANEL MUST BE FREE OF ALL MACHINING MARKS, GOUGES AND SCRATCHES. IF NECESSARY, SAND FRONT OF PANEL WITH NO. 120 GRIT SANDPAPER.

UNLESS OTHERWISE SPECIFIED DIMENSIONS ARE IN INCHES AND INCLUDE CHEMICALLY APPLIED OR PLATED FINISHES							SCALE	1:1			REQ. ITEM	PART NO.	REF: LD1606	DESCRIPTION	SYMBOL
A	DETAIL "A" REV. HOLE 25/32 W. 9/32		12.23.64	13157	hB					1/8 THICK	THE TECHNICAL MATERIEL CORP. MAMARONECK, NEW YORK				
Ø	ORIGINAL RELEASE FOR PRODUCTION		12.11.64	Ø	J.L.					STOCK SIZE	PANEL, FRONT				
X ₁	REDRAWN W/CHANGES		10.16.64	X ₁	hB					ALUMINUM	DOPPLER CORRECTOR				
SYM	DESCRIPTION		DATE	CH. NO.	DRAFTS	CHECKER	ENG. APP.			MATERIAL					
										2024 T3		10.16.64	@ 10-22-64		
	DECIMALS .X ± .05 .XX ± .01 .XXX ± .005		FRACTIONS ± 1/64 ANGLES ± 0° 30'		CODE					TYPE & TEMPER	HEAT TREAT. SPEC.	DRAWN	CHECKED	FINAL APPROVAL	
	TOLERANCES				A					SEE NOTES				MS4030 A	
										FINISH & SPEC. NO.	ELEC. DES. APP.		MECH. DES. APP.		

REQ. PER UNIT	USED ON			MS4031 Ø
	MODEL	ASS'Y. NO.	DATE	
1	PFCB-1			



A ~ 1/8 DIA ~ 4 REQ
 B ~ 5/32 DIA ~ 2 REQ

NOTE:
 REMOVE ALL BURRS AND SHARP EDGES

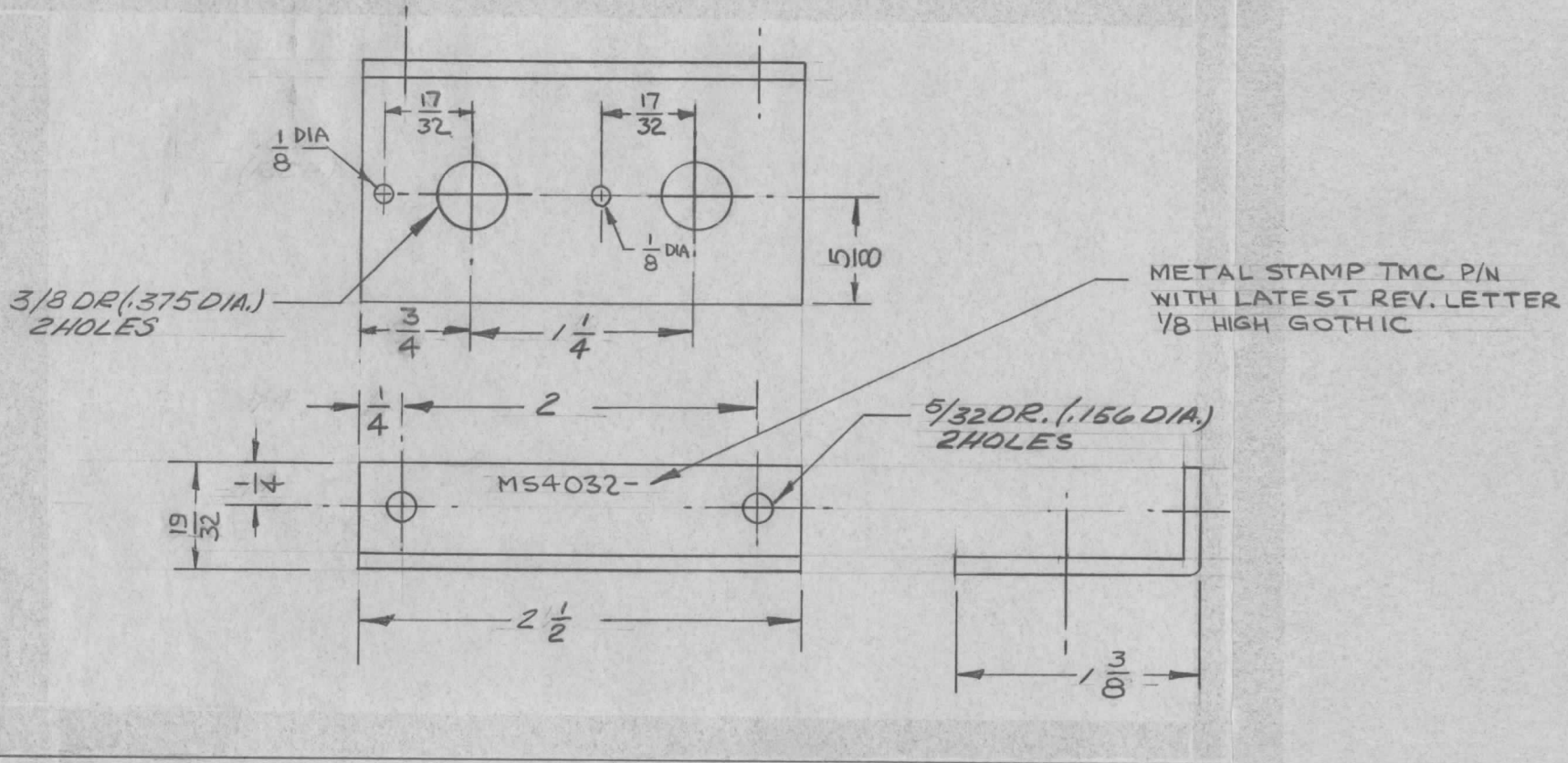
METAL STAMP TMC P/N, WITH LATEST REVISION LETTER 1/8 HIGH GOTHIC.

SYM	DESCRIPTION	DATE	CH. NO.	DRAFTS	CHECKER	ENG. APP.	REQ. ITEM	PART NO.	DESCRIPTION	SYMBOL	
Ø	ORIGINAL RELEASE FOR PRODUCTION	12.1.64	Ø	2L					THE TECHNICAL MATERIEL CORP. MAMARONECK, NEW YORK		
X ₁	REDRAWN W/CHANGES	10.16.64	X ₁	hB						PLATE, REAR	
										DOPPLER CORRECTOR	
	UNLESS OTHERWISE SPECIFIED DIMENSIONS ARE IN INCHES AND INCLUDE CHEMICALLY APPLIED OR PLATED FINISHES	SCALE	1:1					50-52 H32	#	10.16.64 @ 10-22-64	RJC
	DECIMALS .X ± .05 .XX ± .01 .XXX ± .005	FRACTIONS ± 1/64 ANGLES ± 0° 30'	CODE A				YELLOW IRIDITE				
	TOLERANCES						FINISH & SPEC. NO.		ELEC. DES. APP.	MECH. DES. APP.	MS4031 Ø

UNLESS OTHERWISE SPECIFIED:

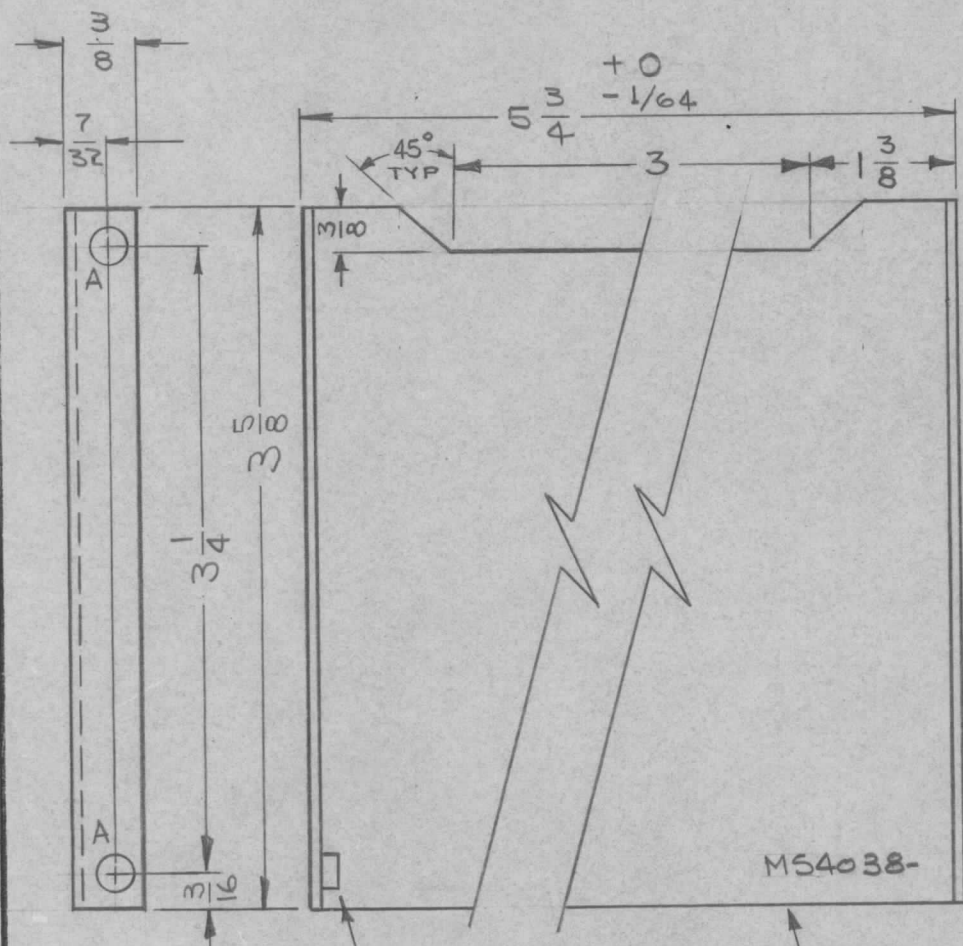
1. USE MATERIAL THICKNESS FOR MAXIMUM RADIUS ON ALL BENDS
2. ALL ANGULAR BENDS 90 DEGREES
3. REMOVE ALL BURRS AND SHARP EDGES

REQ. PER UNIT	USED ON		MS4032	Ø
	MODEL	ASS'Y. NO.		
1	PFCB-1			



REF: LD 1636

REQ. ITEM	PART NO.	DESCRIPTION	SYMBOL
Ø	ORIGINAL RELEASE FOR PRODUCTION	12.11.64	Ø JL
X	REDRAWN W/CHANGES	10.16.64	X, LB
SYM	DESCRIPTION	DATE	CH. NO. DRAFTS CHECKER ENG. APP.
UNLESS OTHERWISE SPECIFIED DIMENSIONS ARE IN INCHES AND INCLUDE CHEMICALLY APPLIED OR PLATED FINISHES		SCALE	NONE
DECIMALS .X ± .05 .XX ± .01 .XXX ± .005	TOLERANCES	FRACTIONS ± 1/64 ANGLES ± 0° 30'	CODE A
.081 THICK STOCK SIZE		THE TECHNICAL MATERIEL CORP. MAMARONECK. NEW YORK	
ALUMINUM MATERIAL		BRACKET	
50-52 H32 TYPE & TEMPER		DOPPLER CORRECTOR, POT SUPPORT	
HEAT TREAT. SPEC.		10.16.64 LB	10-22-64 @ J.S. RAL
YELLOW IRIDITE FINISH & SPEC. NO.		DRAWN	CHECKED
		FINAL APPROVAL	
		MS4032 Ø	
		ELEC. DES. APP.	MECH. DES. APP.



REQ. PER UNIT	USED ON			MS4038 B
	MODEL	ASS'Y. NO.	DATE	
5	PFCB-1		9-18-64	

HOLE	DESCRIPTION	REQ.
A	.161-.164 DIA	4

- UNLESS OTHERWISE SPECIFIED:
1. USE MATERIAL THICKNESS FOR MAXIMUM RADIUS ON ALL BENDS .
 2. ALL ANGULAR BENDS 90 DEGREES
 3. REMOVE ALL BURRS AND SHARP EDGES
 4. MOUNT INSERTS AFTER FINISHING

OPPOSITE SIDE IDENTICAL

1 MOUNT IN ALL "A" HOLES

METAL STAMP TMC PART NO. 1/8 HIGH, WITH LATEST REVISION LETTER.

SYM	DESCRIPTION	DATE	CH. NO.	DRAFTS	CHECKER	ENG. APP.
B	U/O! QTY/UNIT WAS 7.	1-12-65	13256	9L		
A	45° CUTOUT ADDED.	10-9-64	12604	bstb		
Ø	ORIGINAL RELEASE FOR PRODUCTION	9-25-64	Ø.	9L		
X	EXPER. RELEASE	9-18-64	X			
UNLESS OTHERWISE SPECIFIED DIMENSIONS ARE IN INCHES AND INCLUDE CHEMICALLY APPLIED OR PLATED FINISHES		SCALE 1:1				
DECIMALS .X ± .05 .XX ± .01 .XXX ± .005		FRACTIONS ± 1/64 ANGLES ± 0° 30'		CODE A		

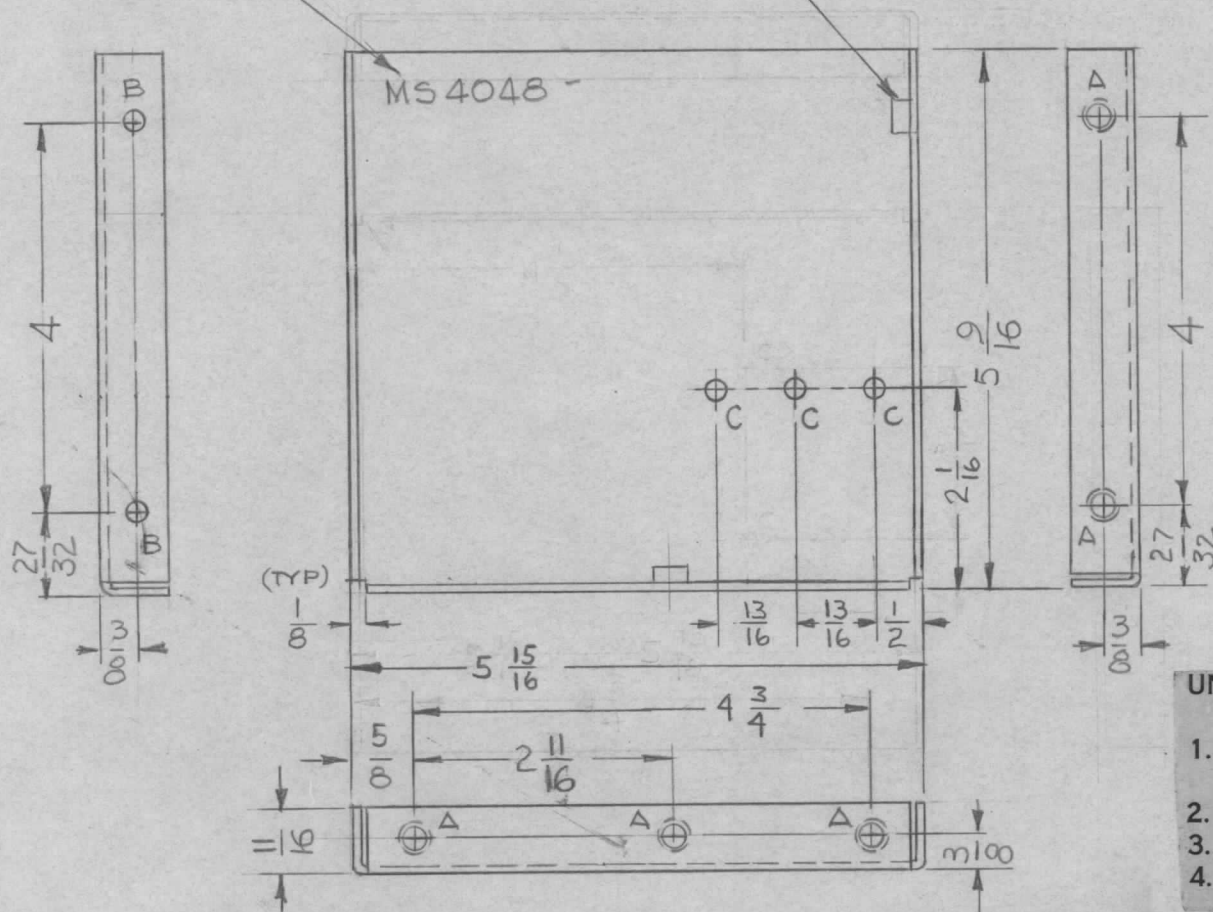
REQ. ITEM	PART NO.	DESCRIPTION	SYMBOL
4	1	NT129-440-3 NUT, PLAIN SPLINE TYPE	A
.051 STOCK SIZE		THE TECHNICAL MATERIEL CORP. MAMARONECK, NEW YORK	
ALUMINUM		PLATED SHIELD	
MATERIAL		PRINTED CIRCUIT	
5052-H32		Q. Law	J.R.S@
TYPE & TEMPER	HEAT TREAT. SPEC.	DRAWN	CHECKED
5404 YELLOW IRIDITE			
FINISH & SPEC. NO.	ELEC. DES. APP.	MECH. DES. APP.	MS4038 B

METAL STAMP TMC P/N.
1/8 HIGH GOTHIC W/LATEST
REV. LETTER

MOUNT IN ALL
"A" HOLES

REQ. PER UNIT	USED ON			MS4048 A
	MODEL	ASS'Y. NO.	DATE	
1	RTMU-1	A3909	10-21-64	

HOLE	DESCRIPTION	REQ.
A	.221 - .224 DIA.	5
B	3/16 DIA.	2
C	1/64 DIA.	3



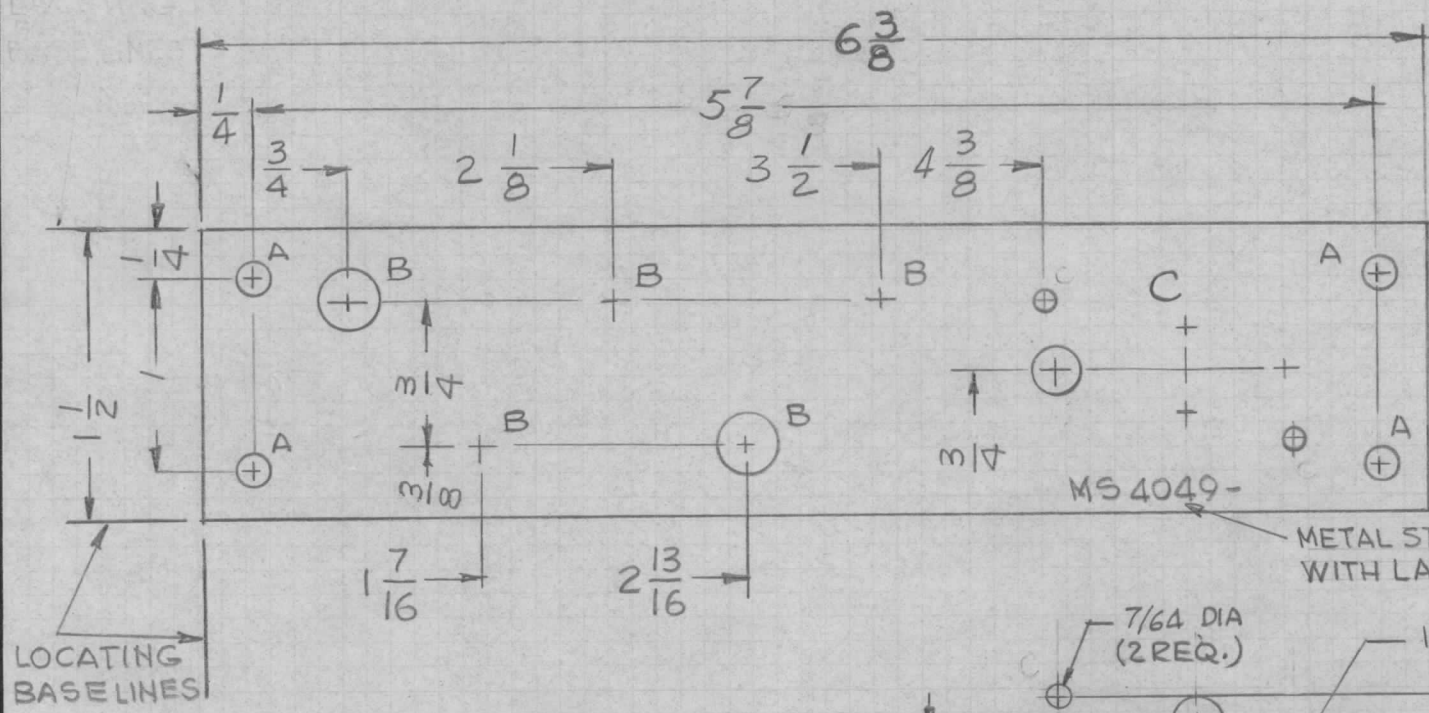
REF. LD 1802

UNLESS OTHERWISE SPECIFIED:

1. USE MATERIAL THICKNESS FOR MAXIMUM RADIUS ON ALL BENDS
2. ALL ANGULAR BENDS 90 DEGREES
3. REMOVE ALL BURRS AND SHARP EDGES
4. MOUNT INSERTS AFTER FINISHING

A		2 "C" HOLES RELOC. & 1 "C" HOLE ADD. W/LOC. DIM; REF. ADD.	3.4.65	13636	92	JOB	5	1	NT129-832-4	NUT, PLAIN, SPLINE	A	
X		ORIGINAL RELEASE FOR PRODUCTION	1/18/65			JM	.081 THK					
X ₁		ADDED "C" HOLES	10/22/64			JL JM W.J.	STOCK SIZE					
X		EXP. RELEASE	10-21-64			G.D.L.	ALUMINUM					
SYM		DESCRIPTION	DATE	CH. NO.	DRAFTS	CHECKER	ENG. APP.	MATERIAL				
		UNLESS OTHERWISE SPECIFIED DIMENSIONS ARE IN INCHES AND INCLUDE CHEMICALLY APPLIED OR PLATED FINISHES	SCALE	1:2			5052-H32					
		DECIMALS .X ± .05 .XX ± .01 .XXX ± .005	TOLERANCES	FRACTIONS ± 1/64 ANGLES ± 0° 30'		CODE A	TYPE & TEMPER		HEAT TREAT. SPEC.	DRAWN	CHECKED	FINAL APPROVAL
						S404 YEL IRIDITE		G.D.L. 10-21-64		W. JORDAN 1/18/65		MS4048 A
						FINISH & SPEC. NO.		ELEC. DES. APP.		MECH. DES. APP.		

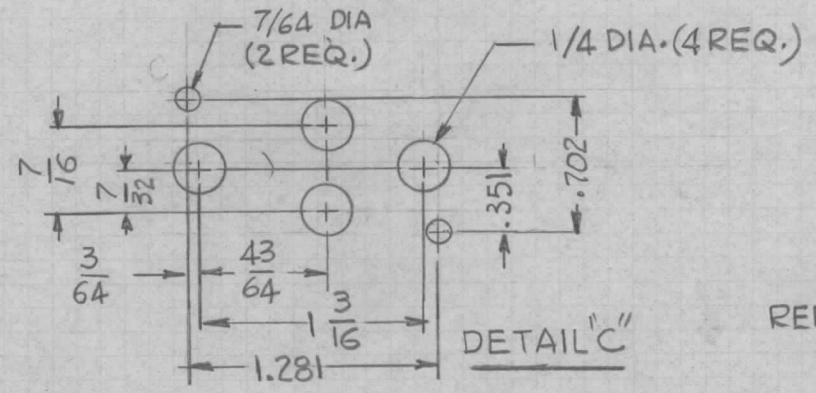
REQ. PER UNIT	USED ON			MS4049 \emptyset
	MODEL	ASS'Y. NO.	DATE	
4	RTMU-1	A3909	10-1-64	



HOLE	DESCRIPTION	REQ
A	11/64 DIA	4
B	5/16 DIA	5
C	SEE DETAIL	1

MS 4049-

METAL STAMP TMC P/No 1/8 HIGH GOTHIC WITH LATEST REVISION LETTER

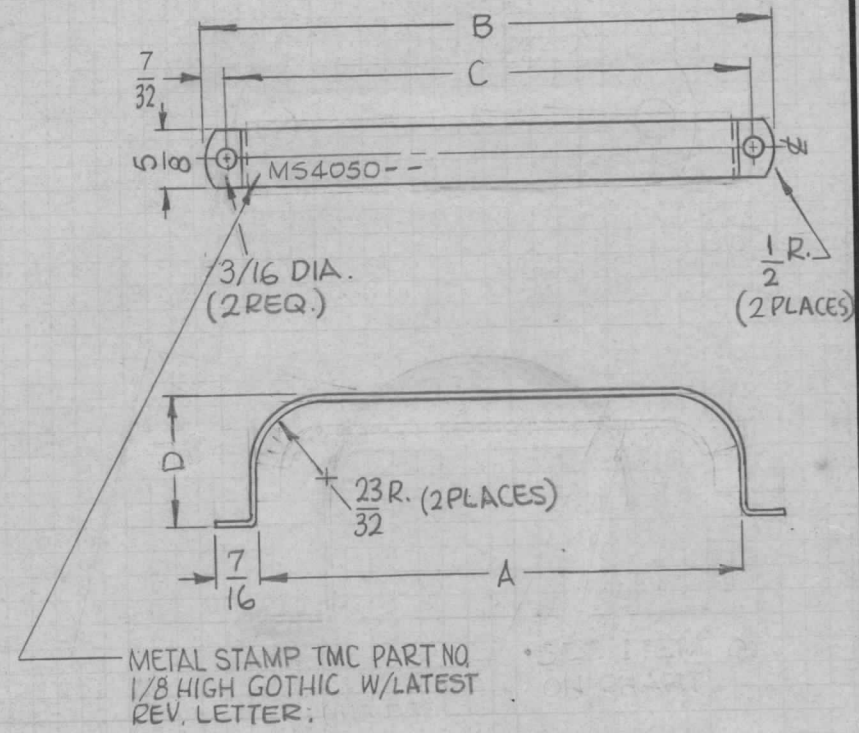


REF: { LD 1619
LD 1620
LD 1621
LD 1622

SYMBOL	DESCRIPTION	DATE	CH. NO.	DRAFTS	CHECKER	ENG. APP.	REQ. ITEM	PART NO.	DESCRIPTION	SYMBOL	
\emptyset	ORIGINAL RELEASE FOR PRODUCTION	10.2.64	\emptyset	JL	JM		1/8 THK		THE TECHNICAL MATERIEL CORP. MAMARONECK, NEW YORK		
X	EXP. RELEASE	10-1-64		G.D.L			STOCK SIZE			PLATE, MTG., COMPONENT	
							ALUMINUM				
							MATERIAL				
	UNLESS OTHERWISE SPECIFIED DIMENSIONS ARE IN INCHES AND INCLUDE CHEMICALLY APPLIED OR PLATED FINISHES	SCALE	1:1				5052-H32		G.D.L 10-1-64	@ 10-2-64	RJC
							TYPE & TEMPER	HEAT TREAT. SPEC.	DRAWN	CHECKED	FINAL APPROVAL
	DECIMALS .X \pm .05 .XX \pm .01 .XXX \pm .005	FRACTIONS \pm 1/64 ANGLES \pm 0° 30'	CODE A	ORIGINAL RELEASE FOR PRODUCTION			5404 YEL IRIDITE		W. JOHNSON 10/2/64		MS4049 \emptyset
	TOLERANCES						FINISH & SPEC. NO.	ELEC. DES. APP.	MECH. DES. APP.		

TMC P/N	A	B	C	D	NO. OF 1-3/8 DIA. COMPONENTS	REQ. PER UNIT	USED ON		
							MODEL	ASS'Y. NO.	DATE
MS 4050-1	4-3/16	5-1/16	4-5/8	1-11/32	3	2	RTMU-1	A3909	10-22-64
MS 4050-2	2-13/16	3-11/16	3-1/4	1-11/32	2	1	RTMU-1	A3909	10-22-64
MS 4050-3	1-7/16	2-5/16	1-7/8	1-11/32	1	1	RTMU-1 RSBA-1	A3909	2-19-65
MS 4050-4	1-7/16	2-5/16	1-7/8	—	—	1	CMR-1 CMRA-1		3-6-67

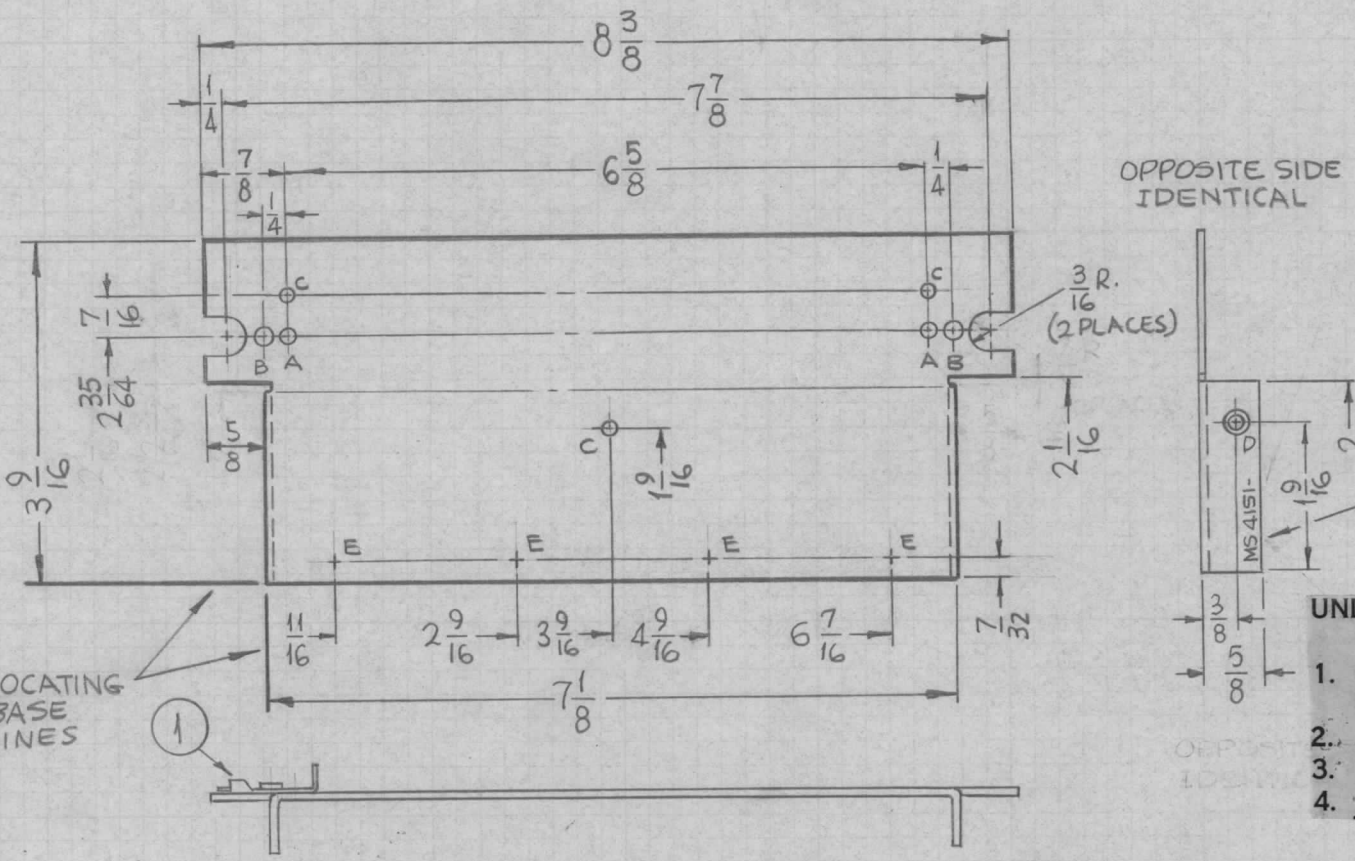
MS 4050 C



SYM	DESCRIPTION	DATE	CH. NO.	DRAFTS	CHECKER	ENG. APP.	REQ. ITEM	PART NO.	EATON	DESCRIPTION	SYMBOL
C	-4 B'DIM W/2 DEL. D'DIM.	1.13.73	20970	GE	EG	EL					
B	COMPLETELY REVISED	9.11.67	18470	H.G		OPT					
A	MS4050-3 2 COMPONENT COL. ADD. TO TMC CHART; IT. 3 ADD. TO B/M.	3.3.65	13607	DL		W.J.		#20 (.0359) GA.		THE TECHNICAL MATERIEL CORP. MAMARONECK. NEW YORK	
Ø	ORIGINAL RELEASE FOR PRODUCTION	1.19.65	Ø	SL				STEEL		BRACKET, MTG, CAPACITOR	
X	EXP. RELEASE	10-22-64	X	SRG				MATERIAL			
	UNLESS OTHERWISE SPECIFIED DIMENSIONS ARE IN INCHES AND INCLUDE CHEMICALLY APPLIED OR PLATED FINISHES	SCALE		—			COLD ROLLED		SRG	@	RJC
							TYPE & TEMPER	HEAT TREAT. SPEC.	DRAWN	CHECKED	FINAL APPROVAL
	DECIMALS .X ± .05 .XX ± .01 .XXX ± .005	TOLERANCES	FRACTIONS ± 1/64 ANGLES ± 0° 30'	CODE A			SI05 CADMIUM PLATE		F. JORDAN 11/19/65	W. JORDAN 11/19/65	MS 4050 C
							FINISH & SPEC. NO.		ELEC. DES. APP.	MECH. DES. APP.	

REQ. PER UNIT	USED ON		
	MODEL	ASS'Y. NO.	DATE
1	RTMU-1	A3908	10-22-64
1	RTPA-1	A3684	10-22-64

MS4051 \otimes



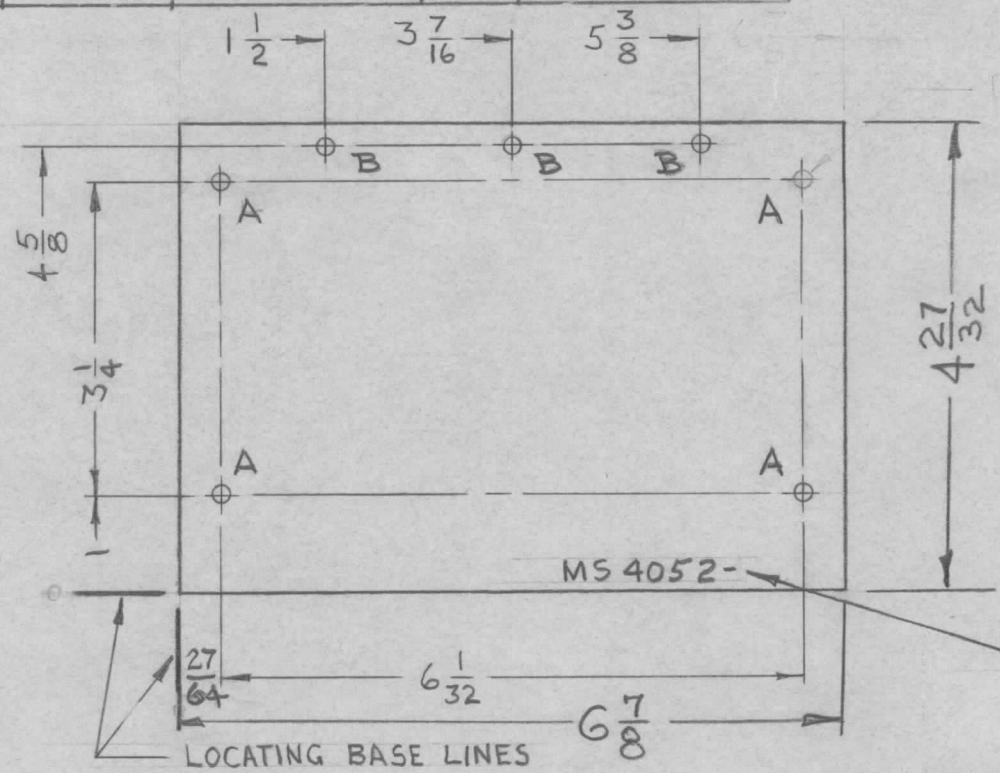
HOLE	DESCRIPTION	REQ.
A	№ 29 (.1360) DR.	2
B	5/32 DIA.	2
C	1/8 DIA.	3
D	.120 DIA. & C'SINK 82° X .230 DIA.	2
E	9/64 DIA.	4

- UNLESS OTHERWISE SPECIFIED:
1. USE MATERIAL THICKNESS FOR MAXIMUM RADIUS ON ALL BENDS
 2. ALL ANGULAR BENDS 90 DEGREES
 3. REMOVE ALL BURRS AND SHARP EDGES
 4. MOUNT FASTENERS AFTER FINISHING IN "A" & "B" HOLES.

REQ.	ITEM	PART NO.	DESCRIPTION	SYMBOL									
2	1	FS 117-4	FASTENER, SNAP SLIDE, SET	A&B									
.064 THK			THE TECHNICAL MATERIEL CORP.										
ALUMINUM			MAMARONECK, NEW YORK										
COVER, P.C. CARD BIN													
SYM	DESCRIPTION	DATE	CH. NO.	DRAFTS	CHECKER	ENG. APP.	MATERIAL	TYPE & TEMPER	HEAT TREAT. SPEC.	DRAWN	CHECKED	FINAL APPROVAL	
	UNLESS OTHERWISE SPECIFIED DIMENSIONS ARE IN INCHES AND INCLUDE CHEMICALLY APPLIED OR PLATED FINISHES	SCALE	1/2:1					5052-H32		SRG	(Signature)	(Signature)	
\otimes	ORIGINAL RELEASE FOR PRODUCTION	1-18-65	\otimes	SRG	J.M.		S404 YELLOW IRIDITE			F. E. Eaton	W. J. Jordan	MS4051 \otimes	
X	EXP. RELEASE	10-22-64	X	SRG						1/18/65	1/18/65		
DECIMALS		FRACTIONS		CODE		FINISH & SPEC. NO.		ELEC. DES. APP.		MECH. DES. APP.			
.X ± .05		± 1/64		A									
.XX ± .01		ANGLES											
.XXX ± .005		± 0° 30'											

TMC PART #	HOLES REQ	MODEL USED ON	REQ	"LD" REF	REQ. PER UNIT	USED ON		
						MODEL	ASSY. NO.	DATE
MS 4052-1	"A" (ONLY)	RTMU-1	1	LD 1629	#	RTMU-1	A3908	1-18-65
		RTPA-1	1	LD 1630	#	RTPA-1	A3684	1-18-65
MS 4052-2	A & B	RTMU-1	1	NONE				
		RTPA-1	1	NONE				

MS 4052 Φ



HOLE LEGEND

HOLE	DIA.	REQ.
A	11/64 DIA	4 (SEE CHART)
B	11/64 DIA	3 (SEE CHART)

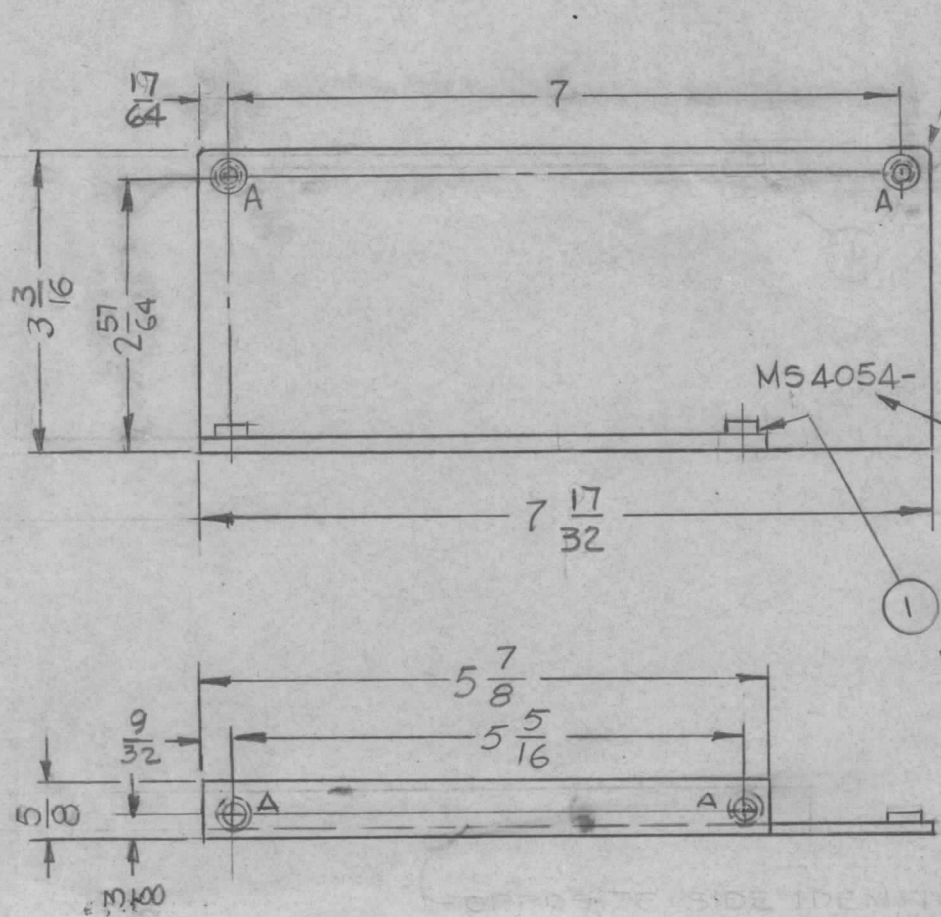
METAL STAMP TMC P/N
1/8 HIGH GOTHIC W/LATEST
REVISION LETTER.

REMOVE ALL BURRS & SHARP EDGES.

REF: MARKING REF (SEE CHART)

SYM	DESCRIPTION	DATE	CH. NO.	DRAFTS	CHECKER	ENG. APP.	REQ. ITEM	PART NO.	EATON	DESCRIPTION SK3071 MS-1	SYMBOL	
Φ	ORIGINAL RELEASE FOR PRODUCTION	1-18-65	Φ	JM			.081 THK.			THE TECHNICAL MATERIEL CORP. MAMARONECK, NEW YORK		
X	EXPER. RELEASE		X	JL			ALUMINUM			PLATE, SIDE - P.C. CARD BIN.		
	UNLESS OTHERWISE SPECIFIED DIMENSIONS ARE IN INCHES AND INCLUDE CHEMICALLY APPLIED OR PLATED FINISHES	SCALE	2:1				5052-H32					
	DECIMALS .X \pm .05 .XX \pm .01 .XXX \pm .005	FRACTIONS \pm 1/64 ANGLES \pm 0° 30'	TOLERANCES				YELLOW IRIDITE PER S404					
							FINISH & SPEC. NO.			ELEC. DES. APP. MECH. DES. APP.	MS 4052 Φ	

REQ. PER UNIT	USED ON			MS 4054
	MODEL	ASS'Y. NO.	DATE	
1	RTTD-1	A3703	9-28-64	



HOLE	DESCRIPTION	REQ.
A	.221 - .224 DIA	4

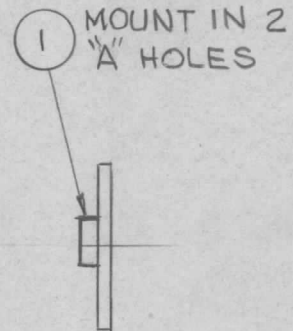
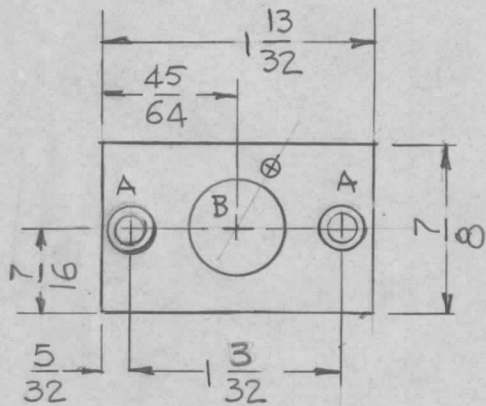
METAL STAMP TMC P/NO W/LATEST REV. LETTER 1/8 GOTHIC.

1 MOUNT IN ALL "A" HOLES

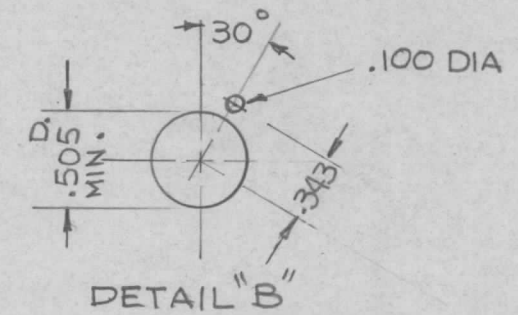
- UNLESS OTHERWISE SPECIFIED:
1. USE MATERIAL THICKNESS FOR MAXIMUM RADIUS ON ALL BENDS
 2. ALL ANGULAR BENDS 90 DEGREES
 3. REMOVE ALL BURRS AND SHARP EDGES
 4. MOUNT INSERTS AFTER FINISHING

4	1	NT129-832-4	NUT, PLAIN, SPLINE		A										
Ø	ORIGINAL RELEASE FOR PRODUCTION	2.10.65	Ø	2 P. GCS	REQ. ITEM	PART NO.	EATON	DESCRIPTION	SYMBOL						
X2	17/64 WAS 9/32, 7/32 WAS 7/16, 3/8 WAS 5/16	10.14.64	X2	WB	.081 THK										
X1	5/8 WAS 17/32, 5/16 WAS 1/4	10-1-64	X1	SRG	STOCK SIZE										
X	EXP. RELEASE	9-28-64	X	G.D.L.	ALUMINUM										
SYM	DESCRIPTION	DATE	CH. NO.	DRAFTS	CHECKER	ENG. APP.	MATERIAL								
UNLESS OTHERWISE SPECIFIED DIMENSIONS ARE IN INCHES AND INCLUDE CHEMICALLY APPLIED OR PLATED FINISHES.		SCALE	1:2			5052-H32									
DECIMALS .X ± .05 .XX ± .01 .XXX ± .005		TOLERANCES		FRACTIONS ± 1/64 ANGLES ± 0° 30'		CODE	S404 YEL. IRIDITE		FINISH & SPEC. NO.						
		A				TYPE & TEMPER		HEAT TREAT. SPEC.		DRAWN		CHECKED		FINAL APPROVAL	
						G.D.L.		GCS		RJC		MS 4054		Ø	
						2/8/65		W. JORDAN		2/8/65					
						ELEC. DES. APP.		MECH. DES. APP.							

REQ. PER UNIT	USED ON			MS 4056	Ø
	MODEL	ASS'Y. NO.	DATE		
2	BSP-6		5-10-65		



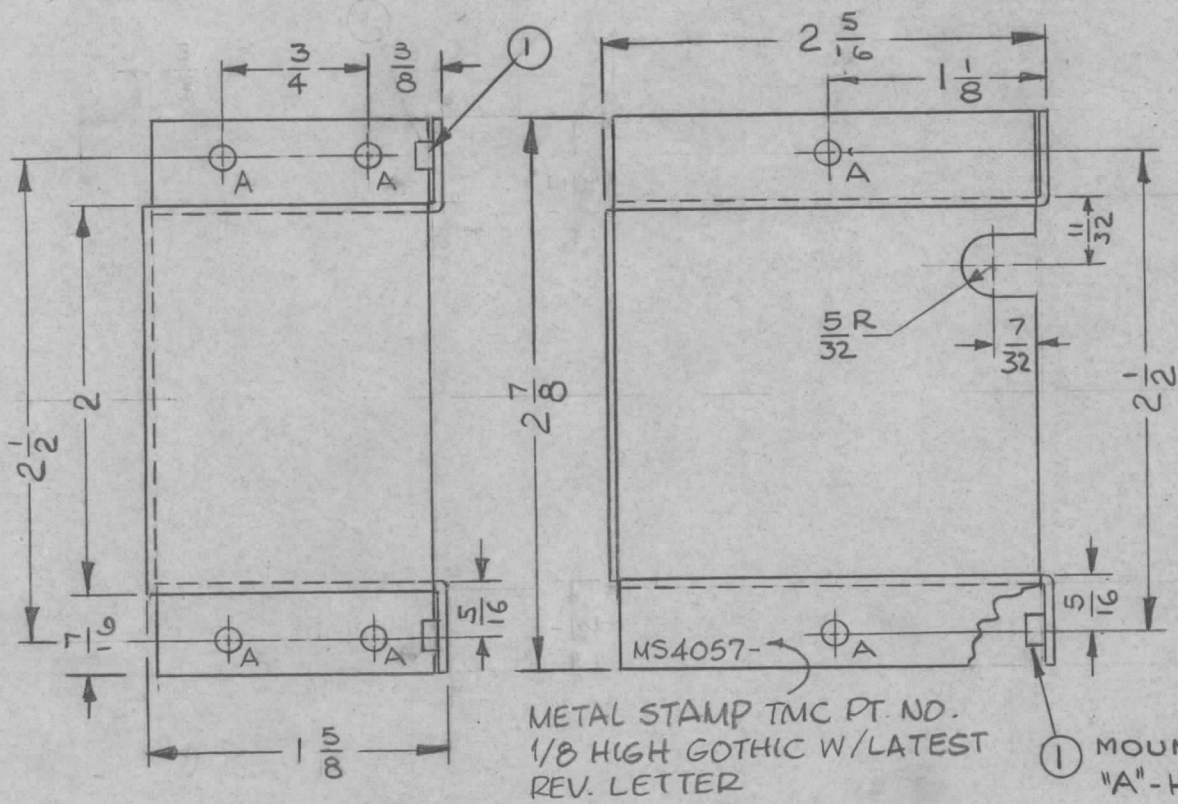
HOLE	DESCRIPTION	REQ
A	.161-.164 DIA	2
B	SEE DETAIL	



		2	1	NT129-440-3	NUT, PLAIN, SPLINE	A
SYM	DESCRIPTION	DATE	CH. NO.	DRAFTS	CHECKER	ENG. APP.
Ø	ORIGINAL RELEASE	5-10-65	Ø	C.D.L.		
UNLESS OTHERWISE SPECIFIED DIMENSIONS ARE IN INCHES AND INCLUDE CHEMICALLY APPLIED OR PLATED FINISHES		SCALE		1:1		
DECIMALS .X ± .05 .XX ± .01 .XXX ± .005	TOLERANCES	FRACTIONS ± 1/64 ANGLES ± 0° 30'	CODE A			
		5052-H32	MATERIAL		ALUMINUM	BRACKET, MTG. CONNECTOR
		TYPE & TEMPER	HEAT TREAT. SPEC.	DRAWN	CHECKED	FINAL APPROVAL
		S404 YEL. IRIDITE		G.D.L.	JOB	M.M.M.
		FINISH & SPEC. NO.	ELEC. DES. APP.	MECH. DES. APP.	MS4056 Ø	

A - .161 - .164 DIA - 6 REQ

REQ. PER UNIT 1	USED ON			MS4057 A
	MODEL RTTD-1	ASS'Y. NO. A3706	DATE 10.1.64	



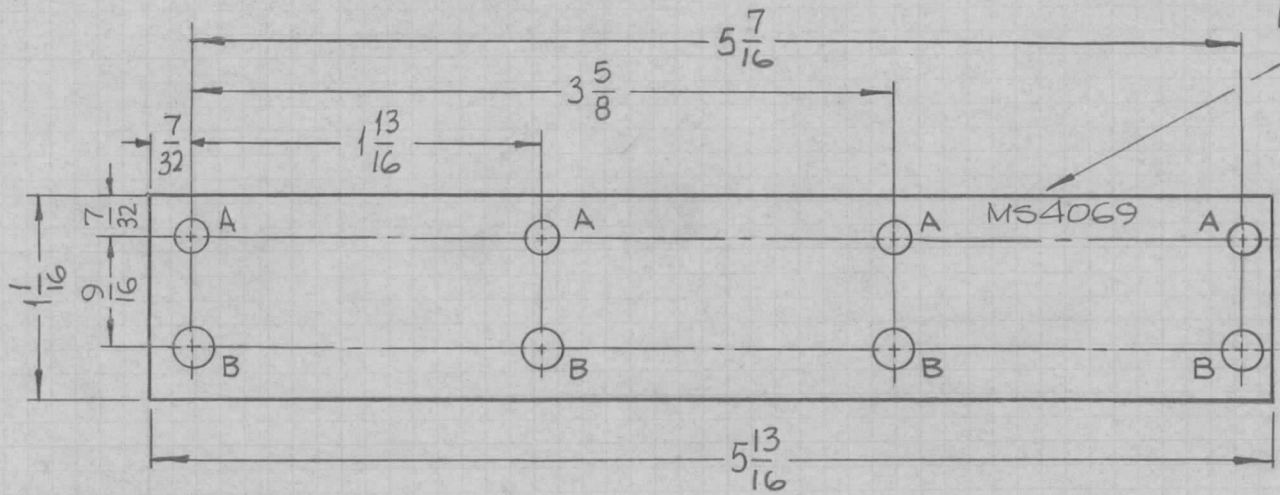
- UNLESS OTHERWISE SPECIFIED:
1. USE MATERIAL THICKNESS FOR MAXIMUM RADIUS ON ALL BENDS
 2. ALL ANGULAR BENDS 90 DEGREES
 3. REMOVE ALL BURRS AND SHARP EDGES
 4. MOUNT INSERTS AFTER FINISHING

A	IT.(2)(EY102-2) DELE. METAL STAMP ADDED	3.4.65	13612	JL.	JCB	JCB
Ø	ORIGINAL RELEASE FOR PRODUCTION	2.10.65	Ø	JL.	JCB	JCB
XZ	REV. 1 5/8 & 2 5/16 DIM. WAS 1 9/16 & 2 1/4; ADDED 7/16 DIM.	11/20/64	XZ	JL.	MUNFORD	W.J.
X1	CALLOUT ① W/NOTE ADDED	10.14.64	X1	W.B.	MUNFORD	W.J.
X	EXPER. RELEASE	10.1.64	X	W.B.		W.J.
SYM	DESCRIPTION	DATE	CH. NO.	DRAFTS	CHECKER	ENG. APP.
UNLESS OTHERWISE SPECIFIED DIMENSIONS ARE IN INCHES AND INCLUDE CHEMICALLY APPLIED OR PLATED FINISHES		SCALE				
		1:1				
DECIMALS	TOLERANCES	FRACTIONS	CODE			
.X ± .05		± 1/64	A			
.XX ± .01		ANGLES				
.XXX ± .005		± 0° 30'				

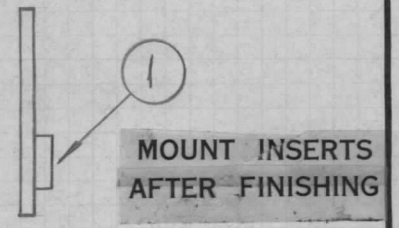
2	DELETED		
6	1	NT129-440-3	NUT, PLAIN, SPLINE
REQ. ITEM	PART NO.	EATON	DESCRIPTION
		SYMBOL	
		A	
		.064 THK	
		STOCK SIZE	
		ALUMINUM	
		MATERIAL	
		COVER, RELAY	
		THE TECHNICAL MATERIEL CORP. MAMARONECK. NEW YORK	
5052-H32	A	W.B.	JCB
TYPE & TEMPER	HEAT TREAT. SPEC.	DRAWN	CHECKED
S404 YELL. IRIDITE		W. JORDAN	2/18/65
FINISH & SPEC. NO.	ELEC. DES. APP.	MECH. DES. APP.	
		MS4057 A	

REQ. PER UNIT	USED ON			MS4069 Ø
	MODEL	ASS'Y. NO.	DATE	
1	YLRB-1	A3771	10-13-64	

HOLES	DESCRIPTION	REQ.
A	5/32 DIA.	4
B	.191-.194 DIA.	4



METAL STAMP TMC PART NO. 1/8 HIGH GOTHIC W/ LATEST REV. LETTER.



						4	1	NT129-632-4	NUT, PLAIN SPLINE	B
						REQ. ITEM		PART NO.	DESCRIPTION	SYMBOL
						.081 THICK			THE TECHNICAL MATERIEL CORP. MAMARONECK, NEW YORK	
						ALUMINUM			PLATE, TERMINAL STRIP MTG.	
						MATERIAL				
						5052-H32		SRG	@ 10-14-64	RL
						TYPE & TEMPER	HEAT TREAT. SPEC.	DRAWN	CHECKED	FINAL APPROVAL
						S404 YELLOW IRIDITE			MP	MS4069 Ø
						FINISH & SPEC. NO.			ELEC. DES. APP.	MECH. DES. APP.

UNLESS OTHERWISE SPECIFIED DIMENSIONS ARE IN INCHES AND INCLUDE CHEMICALLY APPLIED OR PLATED FINISHES

DECIMALS
.X ± .05
.XX ± .01
.XXX ± .005

FRACTIONS
± 1/64
ANGLES
± 0° 30'

TOLERANCES

SCALE 1:1

CODE A

DATE 10-15-64

CH. NO. Ø

DRAFTS RL

CHECKER SRG

ENG. APP.

ORIGINAL RELEASE FOR PRODUCTION

EXP. RELEASE

SYMBOL

DESCRIPTION

DATE

CH. NO.

DRAFTS

CHECKER

ENG. APP.

5052-H32

TYPE & TEMPER

HEAT TREAT. SPEC.

S404 YELLOW IRIDITE

FINISH & SPEC. NO.

SRG

@ 10-14-64

DRAWN

CHECKED

MP

FINAL APPROVAL

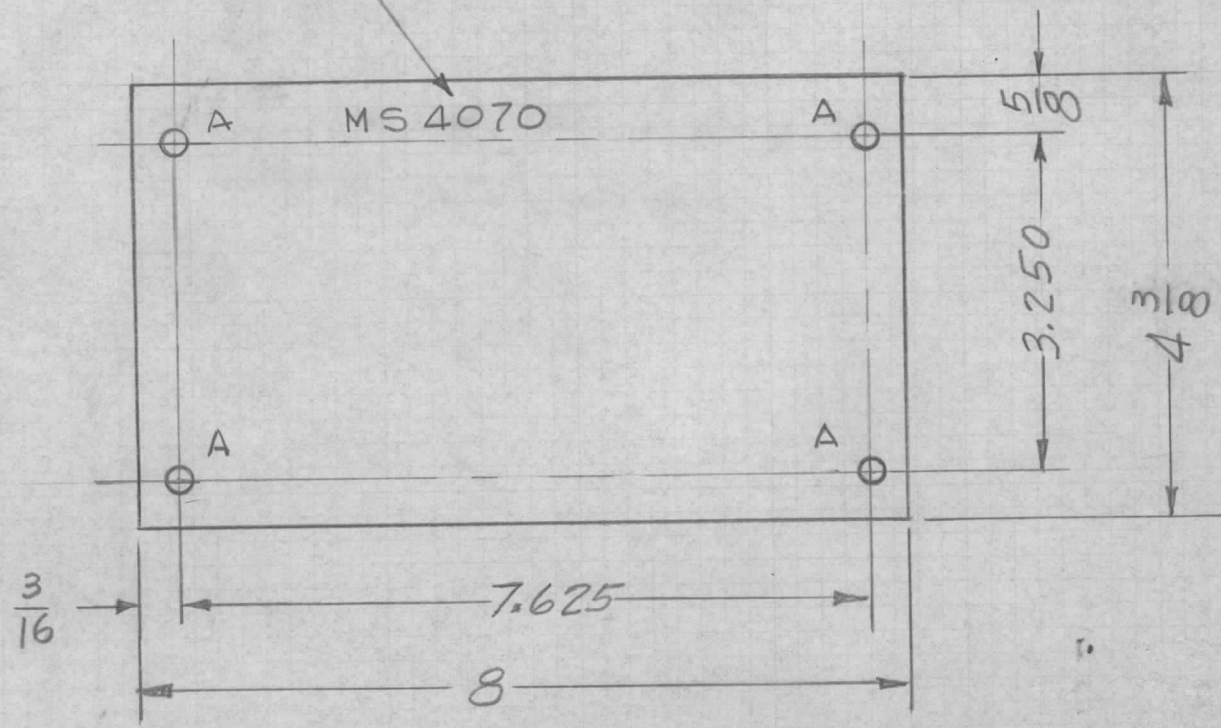
MS4069 Ø

REQ. PER UNIT	USED ON		
	MODEL	ASS'Y. NO.	DATE
1	VLRB-1		

MS4070 \emptyset

METAL STAMP TMC P/No 1/8 HIGH GOTHIC W/LATEST REVISION LETTER

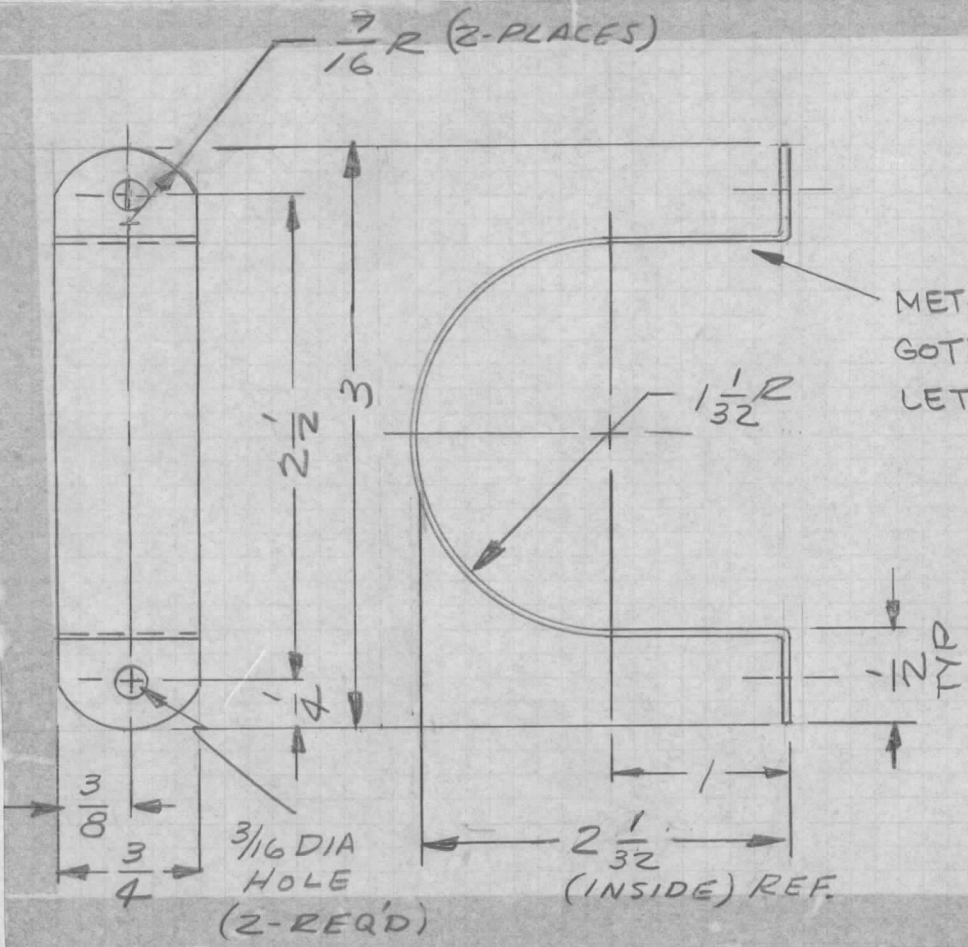
HOLE -
A -.140 DIA. 4 REQ.



REMOVE ALL BURRS & SHARP EDGES

SYM	DESCRIPTION	DATE	CH. NO.	DRAFTS	CHECKER	ENG. APP.	REQ. ITEM	PART NO.	O. POSE	DESCRIPTION	SYMBOL	
								.032 THK.		THE TECHNICAL MATERIEL CORP.		
								STOCK SIZE		MAMARONECK.	NEW YORK	
\emptyset	ORIGINAL RELEASE FOR PRODUCTION	4.9.65	\emptyset	AL				50% ALUMINUM		SHIELD, OSCILLATOR		
X	EXPER. RELEASE											
								MATERIAL				
								5052-H32	D.A.C.	@	4/9/65	
	UNLESS OTHERWISE SPECIFIED DIMENSIONS ARE IN INCHES AND INCLUDE CHEMICALLY APPLIED OR PLATED FINISHES	SCALE	1:2					TYPE & TEMPER	HEAT TREAT. SPEC.	DRAWN	CHECKED	FINAL APPROVAL
								5404 YEL. IRIDIUM				MS4070 \emptyset
								FINISH & SPEC. NO.	ELEC. DES. APP.	MECH. DES. APP.		
DECIMALS	TOLERANCES	FRACTIONS	CODE									
.X \pm .05		\pm 1/64	A									
.XX \pm .01		ANGLES										
.XXX \pm .005		\pm 0° 30'										

REQ. PER UNIT	USED ON			MS4083	Ø
	MODEL	ASS'Y. NO.	DATE		
1	RTIA-1	A4058	1-25-65		

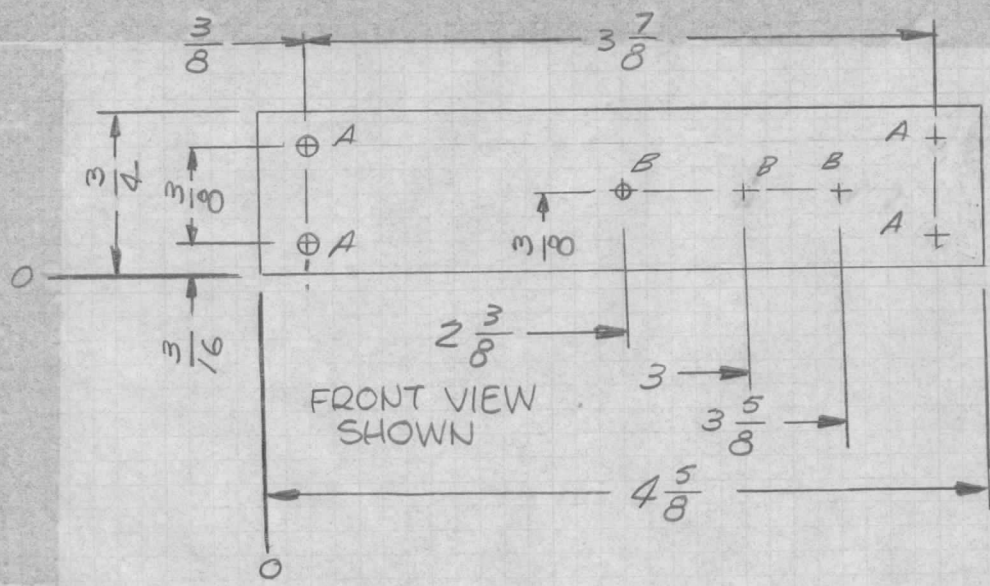


UNLESS OTHERWISE SPECIFIED:

1. USE MATERIAL THICKNESS FOR MAXIMUM RADIUS ON ALL BENDS
2. ALL ANGULAR BENDS 90 DEGREES
3. REMOVE ALL BURRS AND SHARP EDGES

SYM	DESCRIPTION	DATE	CH. NO.	DRAFTS	CHECKER	ENG. APP.	REQ. ITEM	PART NO.	EATON	DESCRIPTION	SYMBOL
Ø	ORIGINAL RELEASE FOR PRODUCTION	2.8.65	Ø	28.			*20 (.0359) GA.			THE TECHNICAL MATERIEL CORP. MAMARONECK, NEW YORK	
X3	REDRAWN - NO CHANGES	125.65	X3	GA	J.M.		STEEL			BRACKET, MTG, CAPACITOR	
	UNLESS OTHERWISE SPECIFIED DIMENSIONS ARE IN INCHES AND INCLUDE CHEMICALLY APPLIED OR PLATED FINISHES						COLD ROLLED	4	Quar	JCS	RJC
	SCALE						TYPE & TEMPER	HEAT TREAT. SPEC.	DRAWN	CHECKED	FINAL APPROVAL
	DECIMALS .X ± .05 .XX ± .01 .XXX ± .005	FRACTIONS ± 1/64 ANGLES ± 0° 30'	CODE A				5105 CAD. PLATE		W. JORDAN 2/8/65	W. JORDAN 2/8/65	MS4083
	TOLERANCES						FINISH & SPEC. NO.		ELEC. DES. APP.	MECH. DES. APP.	

REQ. PER UNIT 2	USED ON		MS4084	Ø
	MODEL RTIA-1	ASS'Y. NO. A 4062		



METAL STAMP TMC P/N 1/8 HIGH GOTHIC, W/LATEST REVISION LETTER, ON REAR.

HOLE	DESCRIPTION	REQ'D
"A"	11/64 DIA	4
"B"	9/64 DIA	3

						REQ. ITEM	PART NO.	EATON	DESCRIPTION	SYMBOL	
							1/8 THK		THE TECHNICAL MATERIEL CORP.		
							STOCK SIZE		MAMARONECK, NEW YORK		
							ALUMINUM		PLATE, MTG, T. B.		
							MATERIAL				
							5052-H32				
							TYPE & TEMPER	HEAT TREAT. SPEC.	DRAWN	CHECKED	FINAL APPROVAL
							3404 YELLOW IRIDITE		W. JORDAN		
							FINISH & SPEC. NO.		ELEC. DES. APP.	MECH. DES. APP.	
											MS4084

UNLESS OTHERWISE SPECIFIED DIMENSIONS ARE IN INCHES AND INCLUDE CHEMICALLY APPLIED OR PLATED FINISHES

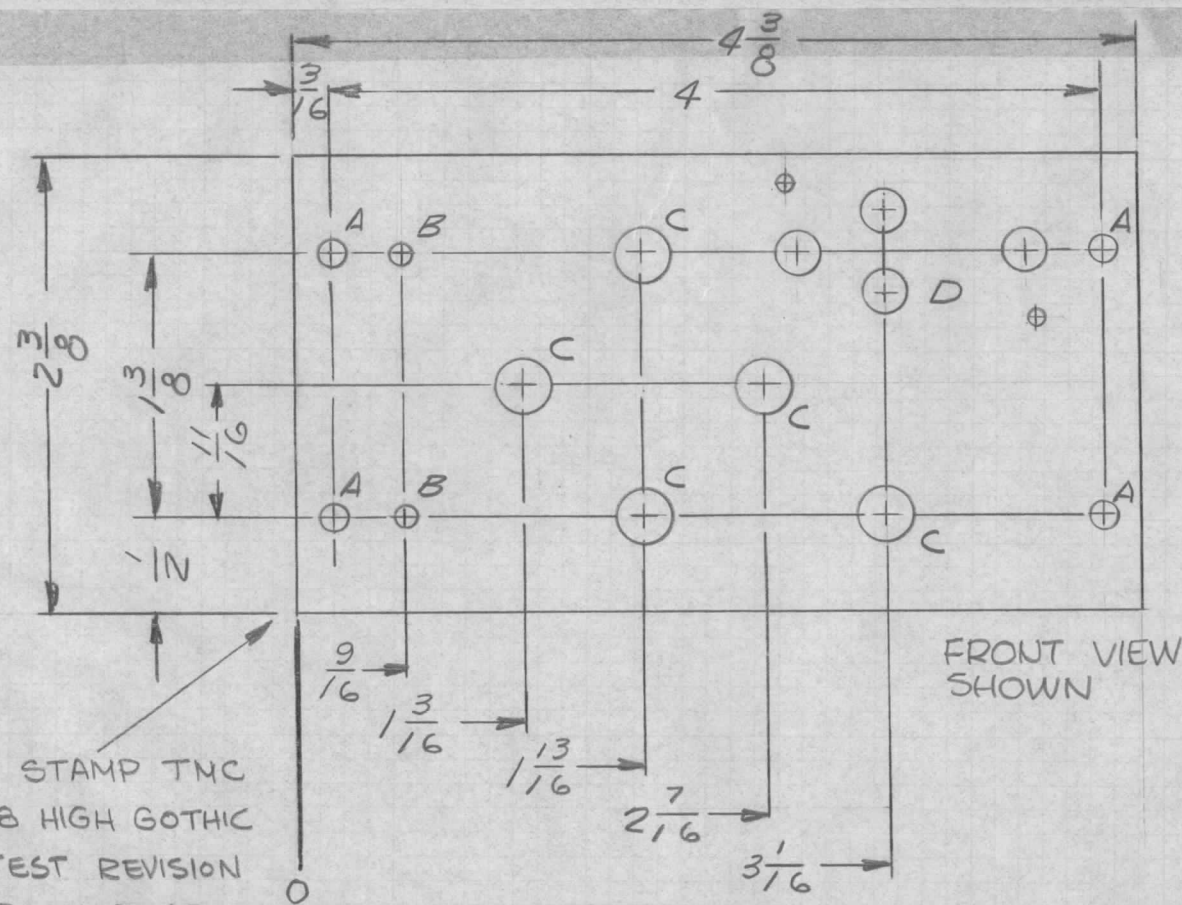
DECIMALS
.X ± .05
.XX ± .01
.XXX ± .005

FRACTIONS
± 1/64
ANGLES
± 0° 30'

TOLERANCES

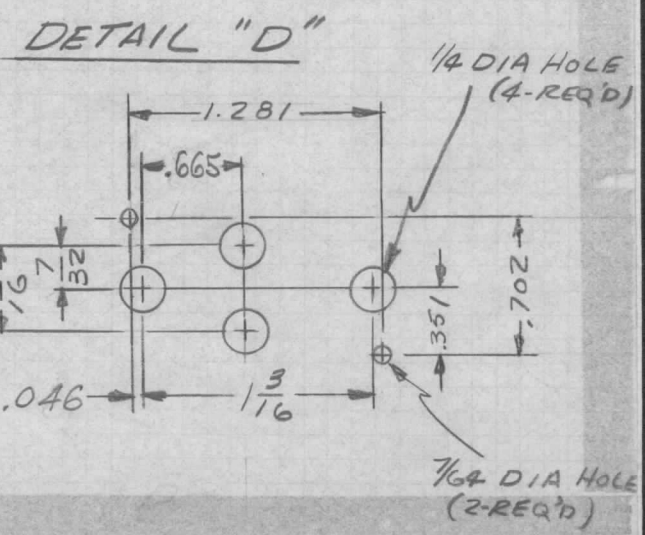
CODE
A

REQ. PER UNIT	USED ON			M54085
	MODEL	ASS'Y. NO.	DATE	
1	RTIA-1	A4067	1-25-65	Ø



HOLE LEGEND

HOLE	DESCRIPTION	REQ'D
"A"	1/64 DIA	4
"B"	3/64 DIA	2
"C"	5/16 DIA	5
"D"	SEE DETAIL	1



METAL STAMP TMC
P/N 1/8 HIGH GOTHIC
W/LATEST REVISION
LETTER ON REAR.

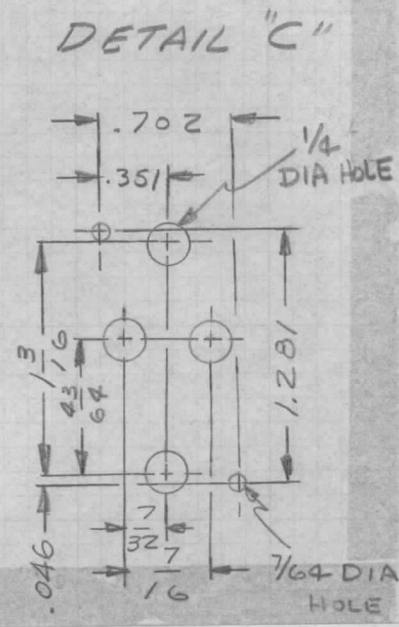
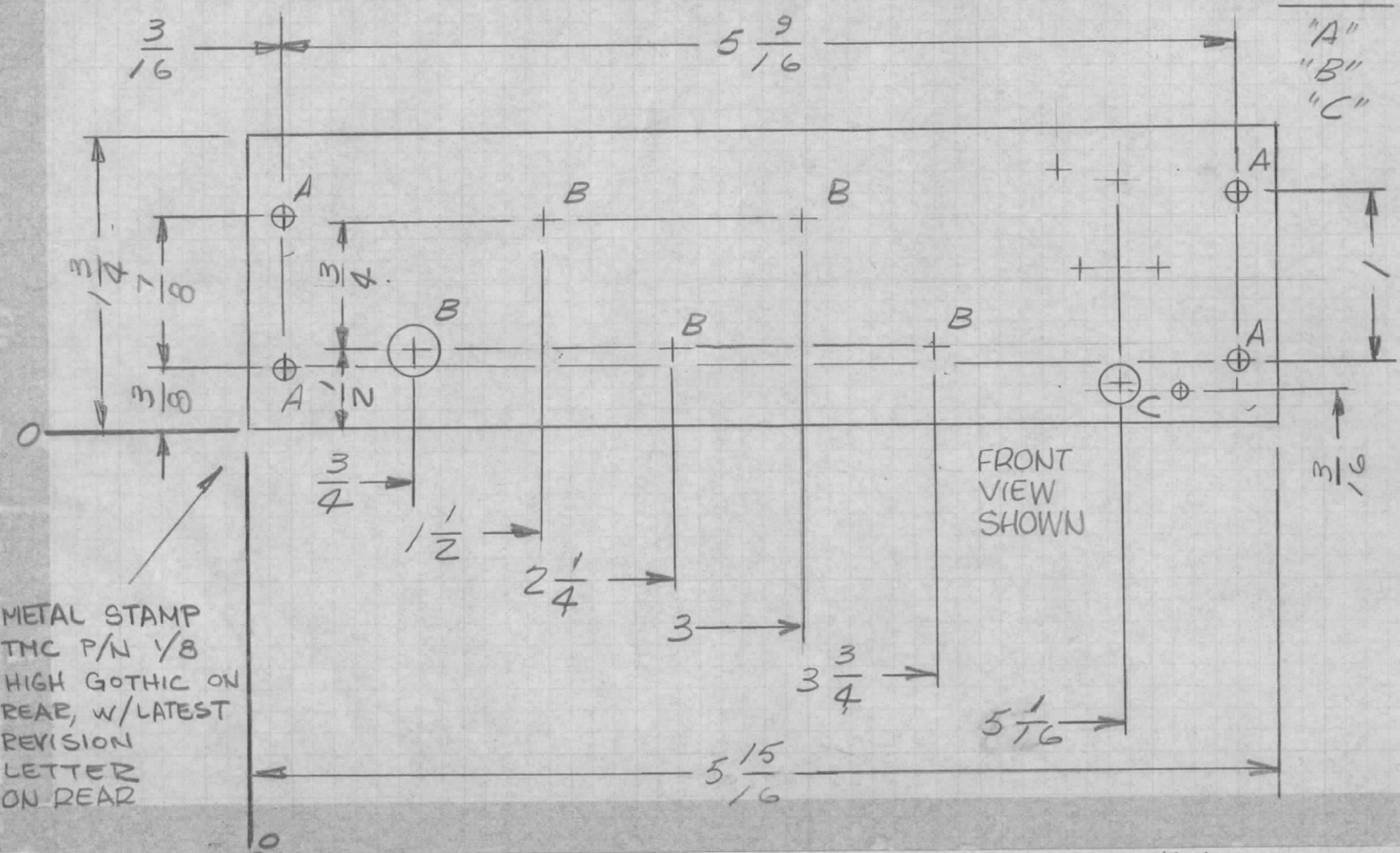
REF: LD1639

REQ. ITEM	PART NO.	EATON	DESCRIPTION	SYMBOL
Ø	ORIGINAL RELEASE FOR PRODUCTION	2.8.65	Ø J.F.	
X3	.046 DIM ON "D" DETAIL WAS 3/64	2/8/65	X3 9E	
X2	REDRAWN-NO CHANGES	1-25-65	X2 J.M.	
SYM	DESCRIPTION	DATE	CH. NO.	DRAFTS
UNLESS OTHERWISE SPECIFIED DIMENSIONS ARE IN INCHES AND INCLUDE CHEMICALLY APPLIED OR PLATED FINISHES		SCALE	4	
DECIMALS .X ± .05 .XX ± .01 .XXX ± .005	TOLERANCES	FRACTIONS ± 1/64 ANGLES, ± 0° 30'	CODE	A
5052-H32	#	W. JORDAN	W. JORDAN	W. JORDAN
TYPE & TEMPER	HEAT TREAT. SPEC.	DRAWN	CHECKED	FINAL APPROVAL
5404 YELLOW IRIDITE		W. JORDAN	W. JORDAN	W. JORDAN
FINISH & SPEC. NO.	ELEC. DES. APP.	MECH. DES. APP.	M54085 Ø	

REQ. PER UNIT	USED ON			MS4086
	MODEL	ASS'Y. NO.	DATE	
1	RTIA-1	A406B	1-25-65	

HOLE LEGEND

HOLE	DESCRIPTION	REQ'D
"A"	1/64 DIA	4
"B"	5/16 DIA	5
"C"	SEE DETAIL 1	1

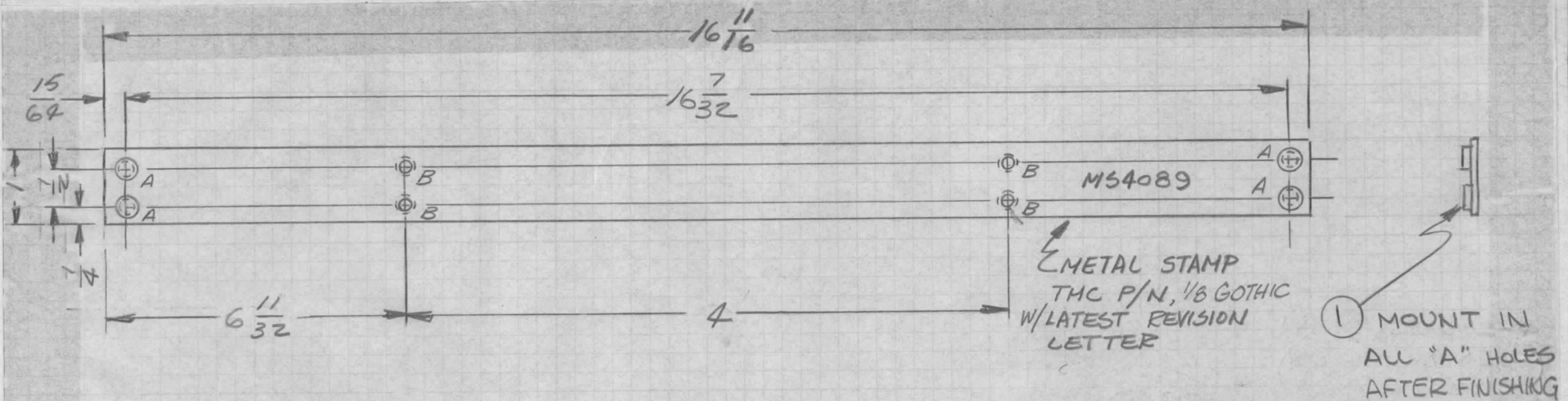


METAL STAMP
TMC P/N 1/8
HIGH GOTHIC ON
REAR, W/LATEST
REVISION
LETTER
ON REAR

REF: LD/640

REQ. ITEM	PART NO.	EATON	DESCRIPTION	SYMBOL
Ø	ORIGINAL RELEASE FOR PRODUCTION	2.8.65	Ø 2L.	
X2	046 DIM ON DETAIL "C" WAS 3/64	2/8/65	X2 1L.	
X1	REDRAWN - NO CHANGES	1-25-65	X1 J.M.	
SYM	DESCRIPTION	DATE	CH. NO.	DRAFTS
UNLESS OTHERWISE SPECIFIED DIMENSIONS ARE IN INCHES AND INCLUDE CHEMICALLY APPLIED OR PLATED FINISHES		SCALE		
DECIMALS .X ± .05 .XX ± .01 .XXX ± .005		FRACTIONS ± 1/64 ANGLES ± 0° 30'		CODE A
TOLERANCES				
5052-H32	#	ALUMINUM	1/8 THK STOCK SIZE	THE TECHNICAL MATERIEL CORP. MAMARONECK, NEW YORK
TYPE & TEMPER		HEAT TREAT. SPEC.		PLATE, MTG, COMPONENT
5404 YELLOW IRIDITE		FINISH & SPEC. NO.		(+ 12 V POWER SUPPLY)
ELEC. DES. APP.		MECH. DES. APP.		
J.P. Eaton		W. Jordan		
2/8/65		2/8/65		MS4086

REQ. PER UNIT	USED ON			MS4089	Ø
	MODEL	ASS'Y. NO.	DATE		
2	RTIA-1	A 4065	10-28-64		



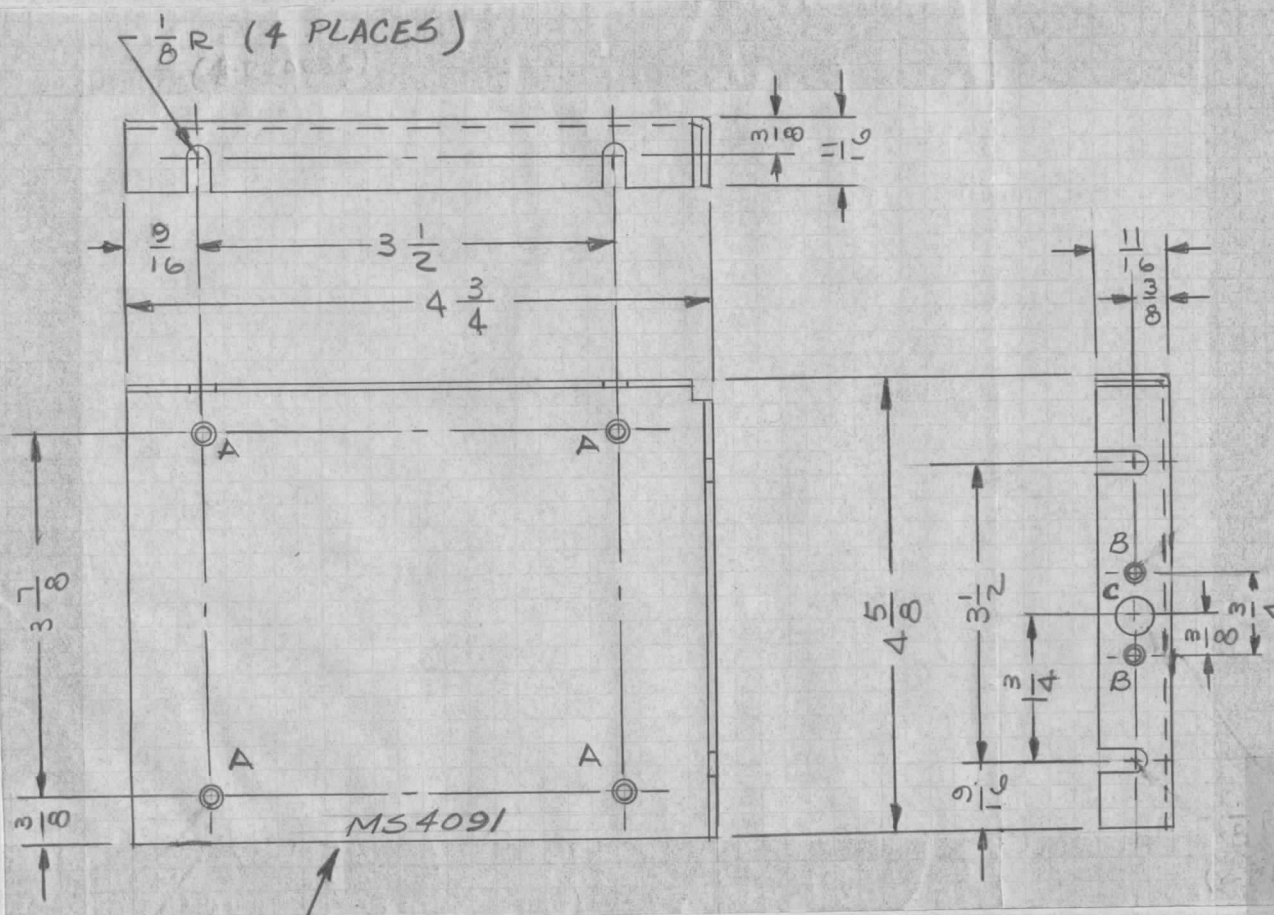
NOTE:
1- REMOVE ALL BURRS & SHARP EDGES.

HOLE LEGEND		
HOLE	DESCRIPTION	REQ'D
"A"	.191-.199 DIA	4
"B"	.144 DIA & C'SINK 82° X.284 DIA, ON REAR AS SHOWN	4

4	1	NT129-632-4	NUT, PLAIN, SPLINE			A	
REQ. ITEM	PART NO.		EATON			DESCRIPTION	SYMBOL
Ø		ORIGINAL RELEASE FOR PRODUCTION	2.8.65	Ø	JL	JM	W.N.
X1		6 1/32 DYM WAS 5 19/32 5 4 WAS 5 1/2	10/29/64	X	JL	JM	W.N.
SYM	DESCRIPTION		DATE	CH. NO.	DRAFTS	CHECKER	ENG. APP.
UNLESS OTHERWISE SPECIFIED DIMENSIONS ARE IN INCHES AND INCLUDE CHEMICALLY APPLIED OR PLATED FINISHES			SCALE		4		
DECIMALS		FRACTIONS		CODE		TOLERANCES	
.X ± .05		± 1/64		A		ANGLES ± 0° 30'	
.XX ± .01							
.XXX ± .005							
5052-H32		4		JL		JCB RAL	
TYPE & TEMPER		HEAT TREAT. SPEC.		DRAWN		CHECKED	
3404 YELLOW IRDITE		2/8/65		W. JORDAN		2/8/65	
FINISH & SPEC. NO.		ELEC. DES. APP.		MECH. DES. APP.		MS4089	

REQ. PER UNIT	USED ON		
	MODEL	ASS'Y. NO.	DATE
2 EA	RTIA-1	SEE CHART	1-22-65

M54091 Ø



HOLE	DESCRIPTION	REQ
A	3/16 DIA, C'SINK 82° TO .337 DIA	4
B	.104 DIA, C'SINK 82° TO .204 DIA.	2
C	3/8 DIA.	1

PART NO.	DESCRIPTION	ASSY NO.
M54091-1	AS SHOWN	A4122
M54091-2	OPPOSITE HAND	A4123

METAL STAMP TMC PART
NO W/LATEST REVISION LETTER
1/8 HIGH GOTHIC

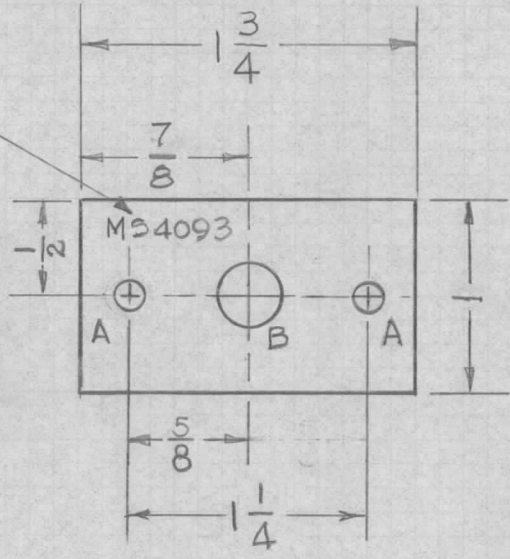
UNLESS OTHERWISE SPECIFIED:

1. USE MATERIAL THICKNESS FOR MAXIMUM RADIUS ON ALL BENDS
2. ALL ANGULAR BENDS 90 DEGREES
3. REMOVE ALL BURRS AND SHARP EDGES

REQ.	ITEM	PART NO.	EATON	DESCRIPTION	SYMBOL
		.081 THK		THE TECHNICAL MATERIEL CORP. MAMARONECK, NEW YORK	
		STOCK SIZE			
		ALUMINUM		PLATE, END - PC CARD BIN	
		MATERIAL			
		5052-H32			
		TYPE & TEMPER	HEAT TREAT. SPEC.	DRAWN	CHECKED
		5404 /EL. IRIDITE		W. JORDAN 2/8/65	MS4091 Ø
		FINISH & SPEC. NO.	ELEC. DES. APP.	MECH. DES. APP.	

REQ. PER UNIT 3	USED ON			MS4093	⊗
	MODEL VLRB-1	ASS'Y. NO.	DATE 10-20-64		

METAL STAMP TMC P/No 1/8 HIGH
GOTHIC W/LATEST REV. LETTER



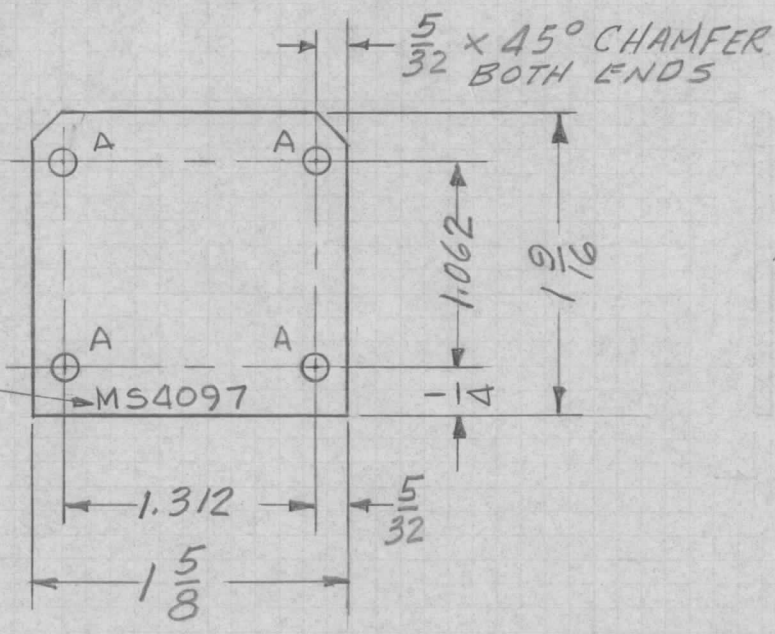
HOLE	DESCRIPTION	REQ.
A	.156 DIA.	2
B	5/16 DIA.	1

REMOVE ALL BURRS AND SHARP EDGES

SYM	DESCRIPTION	DATE	CH. NO.	DRAFTS	CHECKER	ENG. APP.	REQ. ITEM	PART NO.	O. POSE	DESCRIPTION	SYMBOL	
⊗	ORIGINAL RELEASE FOR PRODUCTION	4.9.65	⊗	98								
XI	DIM. 1 3/4 WAS 1 7/8	12-3-64		6DL				.062 THK		THE TECHNICAL MATERIEL CORP. MAMARONECK, NEW YORK		
X	EXPER. RELEASE							ALUMINUM		PLATE, MTC, GROMMET		
	UNLESS OTHERWISE SPECIFIED DIMENSIONS ARE IN INCHES AND INCLUDE CHEMICALLY APPLIED OR PLATED FINISHES	SCALE	1:1					5052-H32		F.A.P	@	1/11 Key 4/9/65
	DECIMALS .X ± .05 .XX ± .01 .XXX ± .005	FRACTIONS ± 1/64 ANGLES ± 0° 30'	CODE A					S404 YEL. IRIDITE				
	TOLERANCES							FINISH & SPEC. NO.	ELEC. DES. APP.	MECH. DES. APP.	MS4093 ⊗	

REQ. PER UNIT	USED ON			MS4097	Ø
	MODEL	ASS'Y. NO.	DATE		
1	VLRB-1				

HOLE -
A - .128 DIA 4 REQ.



METAL STAMP TMC PART No. 1/8 HIGH GOTHIC W/LATEST REVISION LETTER

REMOVE ALL BURRS AND SHARP EDGES

REQ.	ITEM	PART NO.	DESCRIPTION				SYMBOL
Ø			O. POSE				
			.081 THK				THE TECHNICAL MATERIEL CORP. MAMARONECK, NEW YORK
			STOCK SIZE				
XI			ALUMINUM				RETAINER
X							CAM FOLLOWER
SYM	DESCRIPTION	DATE	CH. NO.	DRAFTS	CHECKER	ENG. APP.	
UNLESS OTHERWISE SPECIFIED DIMENSIONS ARE IN INCHES AND INCLUDE CHEMICALLY APPLIED OR PLATED FINISHES		SCALE					
		1:1					
DECIMALS	FRACTIONS	CODE	5052-H32		D.A.C.	@	A/K/May 4/9/65
.X ± .05	± 1/64	Δ	TYPE & TEMPER		CHECKED		
.XX ± .01	ANGLES		5404 YEL. IRIDITE				
.XXX ± .005	± 0° 30'		FINISH & SPEC. NO.		ELEC. DES. APP.	MECH. DES. APP.	MS4097 Ø