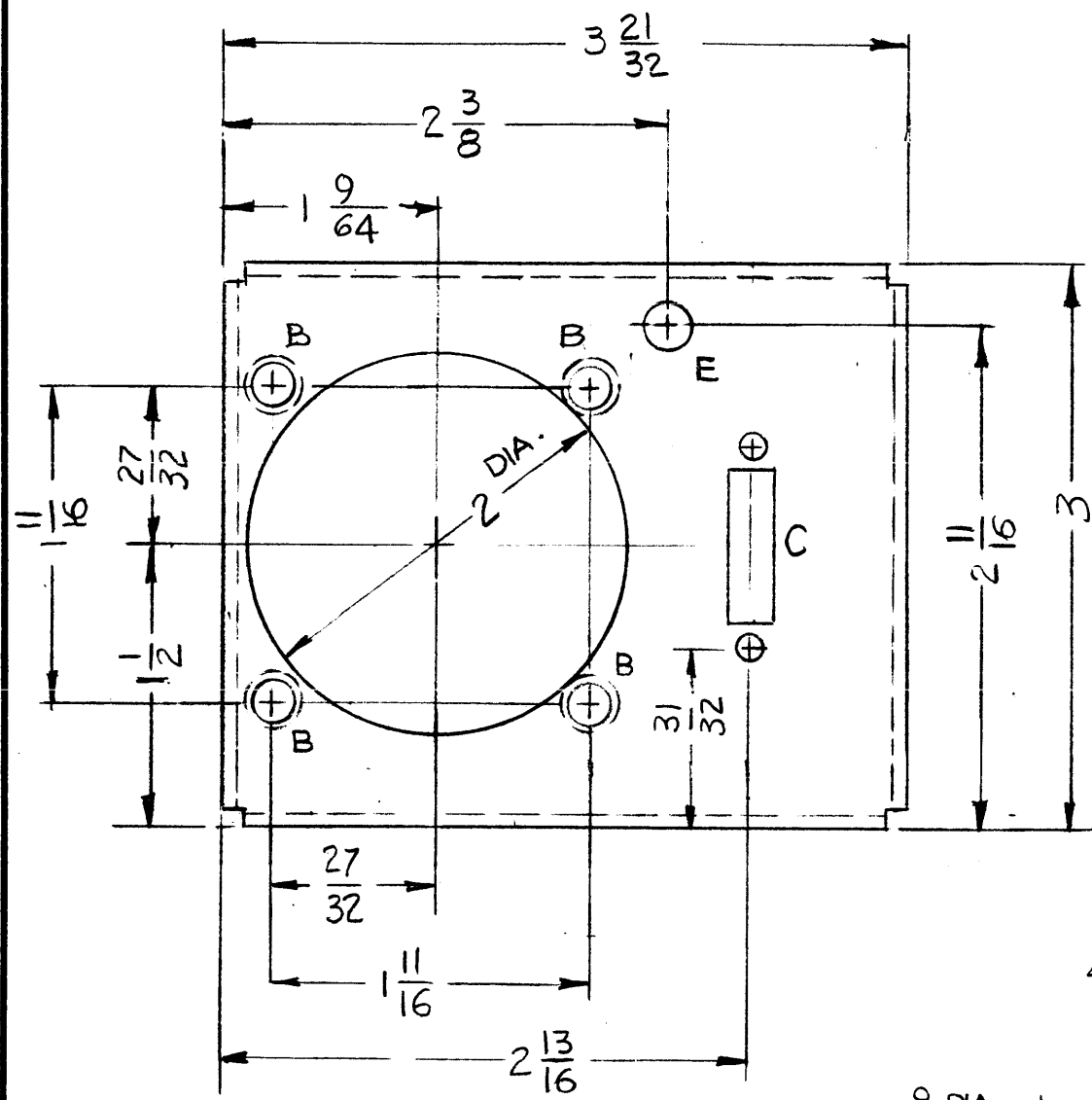


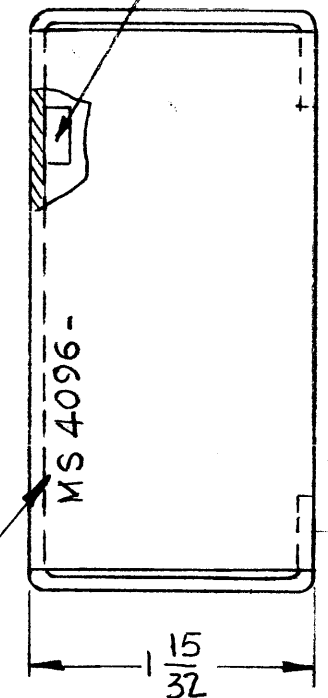
HOLE	DESCRIPTION	REQ
A	DELETED	
B	.191 - .194 DIA.	8
C	SEE DETAIL	1
D	DELETED	4
E	1/4 DIA.	1

MS 4096

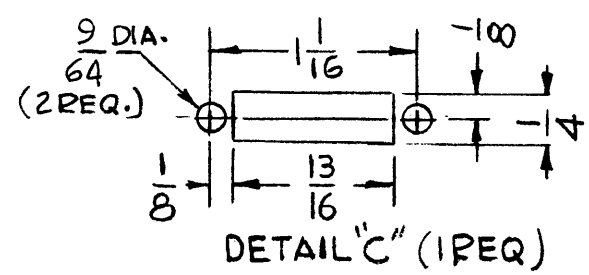
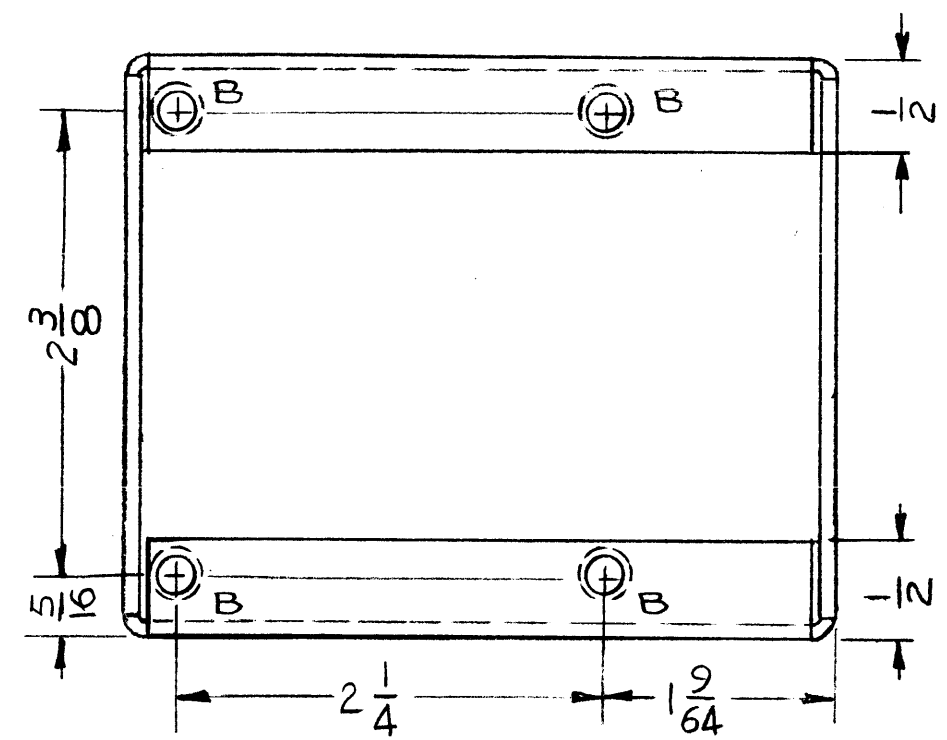
REVISIONS					
SYM	DESCRIPTION	DATE	E.M.N. NO.	DRAFT	CHKD APPD
X	EXP. RELEASE	11-2-64	-	G.D.L.	
X1	4X" HOLES DELETED-ON BOTTOM VIEW "B" HOLES WERE "D" HOLES	11-11-64	-	G.D.L.	
Ø	ORIGINAL RELEASE FOR PRODUCTION	12-28-65	Ø	A.F.	



MOUNT IN ALL "B" HOLES (1)



METAL STAMP TMC P/N 1/8 HIGH GOTHIC W/LATEST REVISION LETTER



- UNLESS OTHERWISE SPECIFIED:
1. USE MATERIAL THICKNESS FOR MAXIMUM RADIUS ON ALL BENDS
  2. ALL ANGULAR BENDS 90 DEGREES
  3. REMOVE ALL BURRS AND SHARP EDGES
  4. MOUNT INSERTS AFTER FINISHING

NOTES

1	RAK 106	
Q'TY./UNIT	MODEL USED ON	ASSY. NO.
SCALE	CODE	
1:1	A	

THE CONTENTS OF THIS DRAWING ARE THE EXCLUSIVE PROPERTY OF THE TECHNICAL MATERIEL CORP. ITS UNAUTHORIZED USE OR REPRODUCTION IN WHOLE OR IN PART IS STRICTLY FORBIDDEN.

REF: LD1661

8	1	NT 129-632-4	NUT, PLAIN, SPLINE	B
REQ'D.	ITEM	PART NUMBER	DESCRIPTION	SYMBOL

O POSE		LIST OF MATERIAL			
MATERIAL		THE TECHNICAL MATERIEL CORP.			
.081 THK. ALUMINUM		MAMARONECK, NEW YORK			
5052 - H32		TITLE			
S404 YEL. IRIDITE		BRACKET, MOUNTING			
FINISH		DRAWN			
UNLESS OTHERWISE SPECIFIED		G.D.L.		DATE	
DIMENSIONS ARE IN INCHES AND INCLUDE		CHECKED		DATE	
CHEMICALLY APPLIED OR PLATED FINISHES		J.S.		12-28-64	
DECIMALS		ELECT. DES.		DATE	
.X ± .05		MECH. DES.		DATE	
.XX ± .01				MS 4096	
.XXX ± .005				SHEET	
FRACTIONS				REV. LTR.	
± 1/64				Ø	
ANGLES					
± 0° 30'					