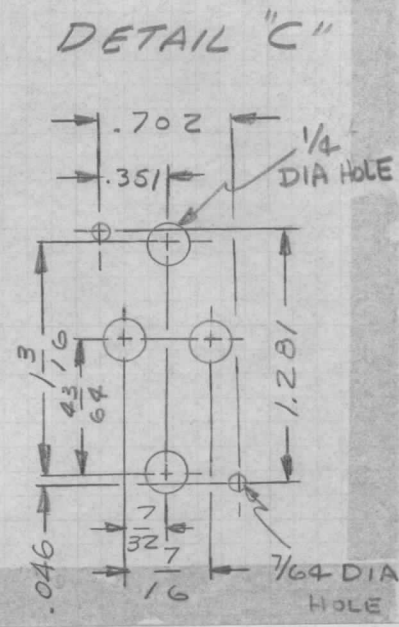
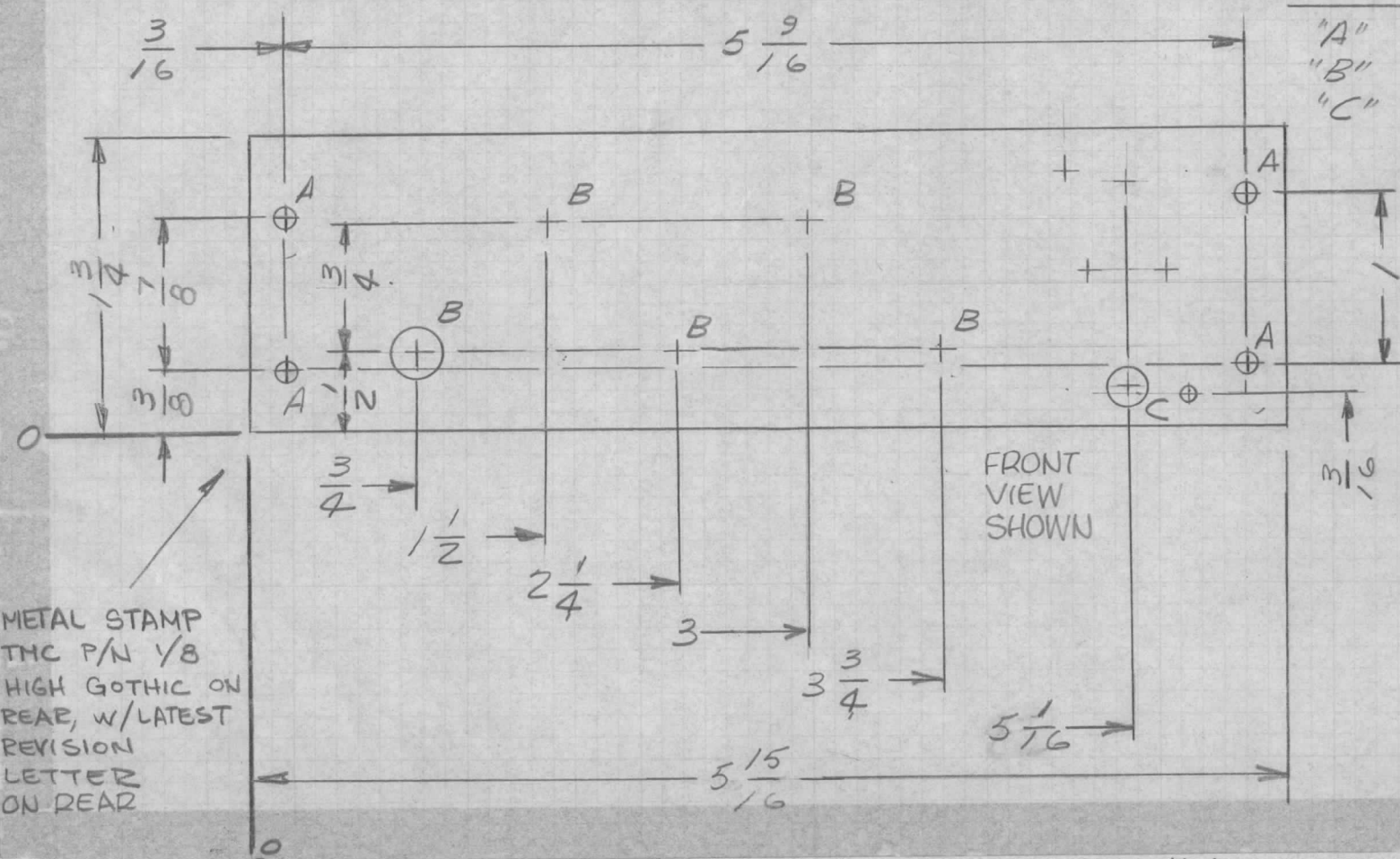


| | | | | |
|---------------|---------|------------|---------|--------|
| REQ. PER UNIT | USED ON | | | MS4086 |
| | MODEL | ASS'Y. NO. | DATE | |
| 1 | RTIA-1 | A406B | 1-25-65 | |

HOLE LEGEND

| HOLE | DESCRIPTION | REQ'D |
|------|--------------|-------|
| "A" | 1/64 DIA | 4 |
| "B" | 5/16 DIA | 5 |
| "C" | SEE DETAIL 1 | 1 |



METAL STAMP
TMC P/N 1/8
HIGH GOTHIC ON
REAR, w/LATEST
REVISION
LETTER
ON REAR

REF: LD/640

| REQ. ITEM | PART NO. | EATON | DESCRIPTION | SYMBOL |
|---|---------------------------------|---|-------------|----------------|
| Ø | ORIGINAL RELEASE FOR PRODUCTION | 2.8.65 | Ø 2L. | |
| X2 | 046 DIM ON DETAIL "C" WAS 3/64 | 2/8/65 | X2 1L. | |
| X1 | REDRAWN - NO CHANGES | 1-25-65 | X1 J.M. | |
| SYM | DESCRIPTION | DATE | CH. NO. | DRAFTS |
| UNLESS OTHERWISE SPECIFIED DIMENSIONS ARE IN INCHES AND INCLUDE CHEMICALLY APPLIED OR PLATED FINISHES | | SCALE | | |
| DECIMALS .X ± .05 .XX ± .01 .XXX ± .005 | | FRACTIONS ± 1/64 ANGLES ± 0° 30' | | CODE A |
| TOLERANCES | | | | |
| 5052-H32 | | HEAT TREAT. SPEC. | | 5 |
| 1/8 THK STOCK SIZE | | ALUMINUM | | |
| THE TECHNICAL MATERIEL CORP. MAMARONECK. NEW YORK | | PLATE, MTG, COMPONENT (+12V POWER SUPPLY) | | |
| DRAWN | | CHECKED | | FINAL APPROVAL |
| ELEC. DES. APP. | | MECH. DES. APP. | | |
| 5404 YELLOW IRIDITE | | 2/8/65 | | MS4086 |