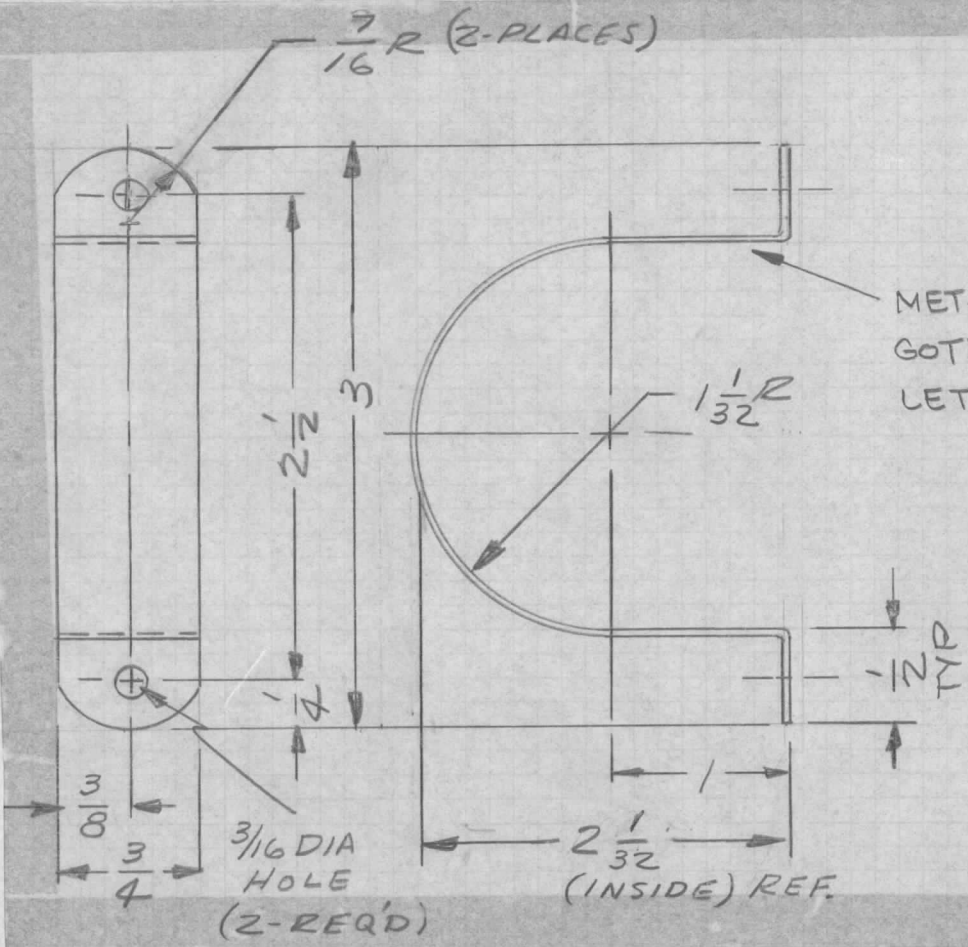


REQ. PER UNIT	USED ON			MS4083	Ø
	MODEL	ASS'Y. NO.	DATE		
1	RTIA-1	A4058	1-25-65		



UNLESS OTHERWISE SPECIFIED:

1. USE MATERIAL THICKNESS FOR MAXIMUM RADIUS ON ALL BENDS
2. ALL ANGULAR BENDS 90 DEGREES
3. REMOVE ALL BURRS AND SHARP EDGES

REQ. ITEM	PART NO.	EATON	DESCRIPTION	SYMBOL								
	#20 (.0359) GA.		THE TECHNICAL MATERIEL CORP. MAMARONECK, NEW YORK									
Ø	ORIGINAL RELEASE FOR PRODUCTION	2.8.65	Ø J.F.									
X3	REDRAWN - NO CHANGES	125.65	X3 G.P. J.M.									
SYM	DESCRIPTION	DATE	CH. NO.	DRAFTS	CHECKER	ENG. APP.	MATERIAL					
UNLESS OTHERWISE SPECIFIED DIMENSIONS ARE IN INCHES AND INCLUDE CHEMICALLY APPLIED OR PLATED FINISHES		SCALE	4		COLD ROLLED		4	Drawn	JCS	RJC		
DECIMALS .X ± .05 .XX ± .01 .XXX ± .005		TOLERANCES		FRACTIONS ± 1/64 ANGLES ± 0° 30'		CODE	A	TYPE & TEMPER	HEAT TREAT. SPEC.	DRAWN	CHECKED	FINAL APPROVAL
						5105 CAD. PLATE		W. JORDAN	2/8/65	2/8/65	MS4083	Ø
						FINISH & SPEC. NO.		ELEC. DES. APP.	MECH. DES. APP.			