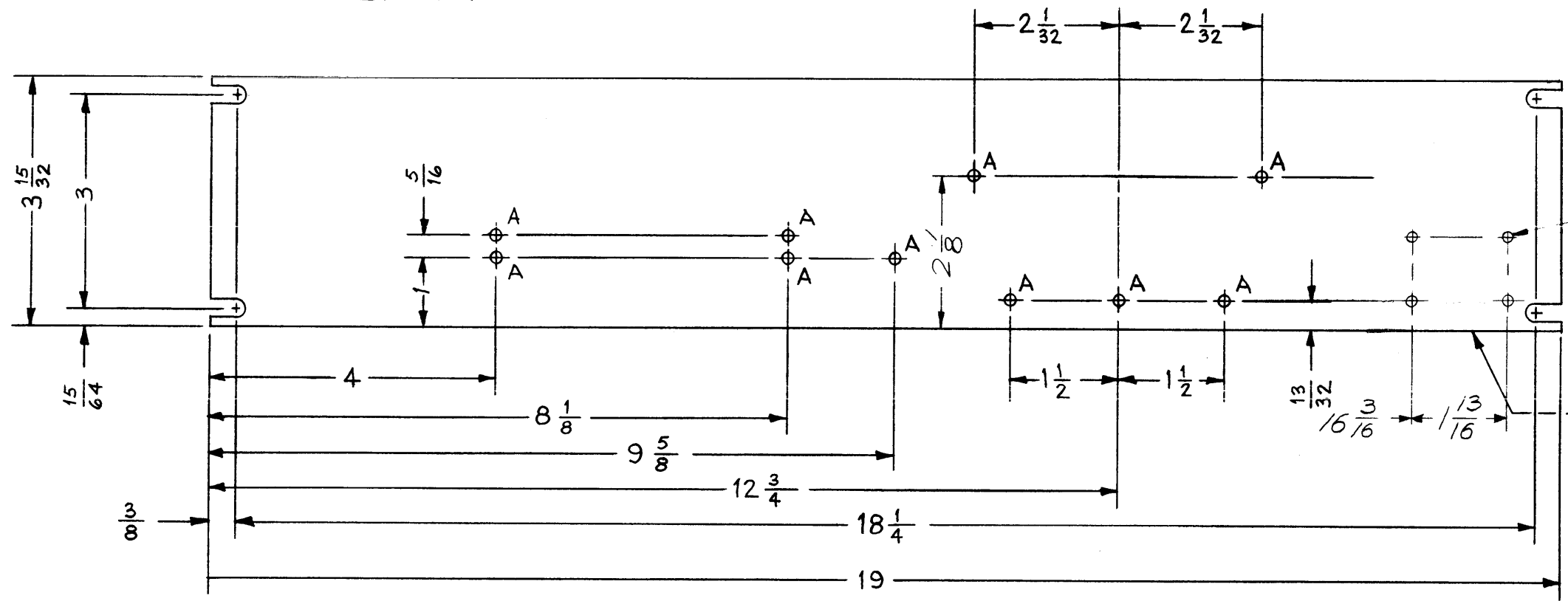


A
MS4071

REVISIONS					
SYM	DESCRIPTION	DATE	E.M.N. NO.	DRAFT	CHKD APPD
Ø	ORIGINAL RELEASE FOR PRODUCTION	10.15.64	Ø	MB	
A	ADD. DETA, REF. & 4 B HOLES (LEGEND)	5.21.69	19443	GE	EFM

LEGEND

HOLE	DESCRIPTION	REQ
A	.144 DIA.	10
B	#50 (.070) DIA.	4



- MACHINING:**
1. MILL ALL EDGES.
 2. HOLES MUST BE DRILLED, UNLESS OTHERWISE SPECIFIED.
 3. LATERAL BOW OF PANEL MUST BE KEPT TO .031 TOLERANCE.
 4. PANEL MUST BE FREE OF ALL MACHINING MARKS, GOUGES AND SCRATCHES. IF NECESSARY, SAND FRONT OF PANEL WITH NO. 120 GRIT SANDPAPER.

- FINISH NOTES:**
1. S404 - IRIDITE 14-2 AL-COAT.
 2. S114 - ZINC CHROMATE PRIMER) FRONT AND
 3. S115 - SMOOTH GRAY ENAMEL) EDGES ONLY

NOTES

	AX-515	
QTY./UNIT	MODEL USED ON	ASSY. NO.
SCALE	CODE	
1:2	A	

THE CONTENTS OF THIS DRAWING ARE THE EXCLUSIVE PROPERTY OF THE TECHNICAL MATERIEL CORP. ITS UNAUTHORIZED USE OR REPRODUCTION IN WHOLE OR IN PART IS STRICTLY FORBIDDEN.

REF. LD 2346

REQ'D.	ITEM	PART NUMBER	DESCRIPTION	SYMBOL
MARTINENGO		LIST OF MATERIAL		
MATERIAL		THE TECHNICAL MATERIEL CORP.		
3 15/32 x 19 x 3/16 ALUMINUM		MAMARONECK, NEW YORK		
2024-T3		TITLE		
FINISH		PANEL, FRONT		
SEE NOTES		DRAWN		
UNLESS OTHERWISE SPECIFIED		M. TANTILLO		DATE
DIMENSIONS ARE IN INCHES AND INCLUDE		10-14-64		FINAL APPROVAL
CHEMICALLY APPLIED OR PLATED FINISHES		CHECKED @		DATE
		10-14-64		
		ELECT. DES.		DATE
		MECH. DES.		DATE
		10-14-64		
DECIMALS		FRACTIONS		
.X ± .05		± 1/64		
.XX ± .01		ANGLES		
.XXX ± .005		± 0° 30'		
TOLERANCES		SHEET		
		MS4071		A
		REV. LTR.		