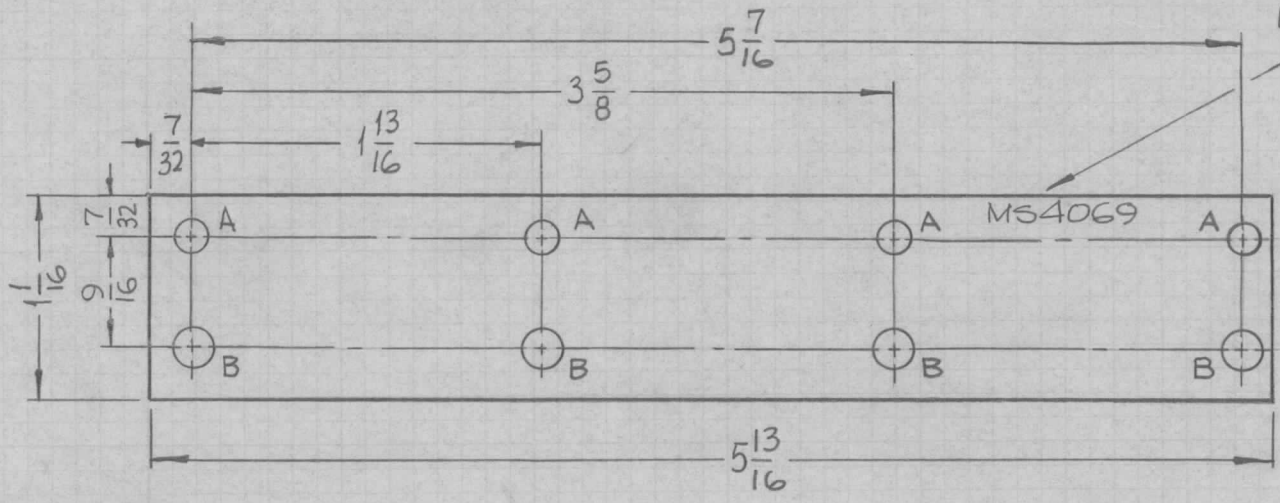
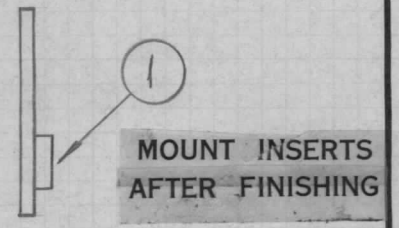


REQ. PER UNIT	USED ON			MS4069 Ø
	MODEL	ASS'Y. NO.	DATE	
1	YLRB-1	A3771	10-13-64	

HOLES	DESCRIPTION	REQ.
A	5/32 DIA.	4
B	.191-.194 DIA.	4



METAL STAMP TMC PART NO. 1/8 HIGH GOTHIC W/ LATEST REV. LETTER.



						4	1	NT129-632-4	NUT, PLAIN SPLINE	B
						REQ. ITEM		PART NO.	DESCRIPTION	SYMBOL
						.081 THICK			THE TECHNICAL MATERIEL CORP. MAMARONECK, NEW YORK	
						ALUMINUM			PLATE, TERMINAL STRIP MTG.	
						MATERIAL				
						5052-H32		SRG	@ 10-14-64	<i>SRG</i>
						TYPE & TEMPER	HEAT TREAT. SPEC.	DRAWN	CHECKED	FINAL APPROVAL
						S404 YELLOW IRIDITE			<i>MP</i>	MS4069 Ø
						FINISH & SPEC. NO.			ELEC. DES. APP.	MECH. DES. APP.

UNLESS OTHERWISE SPECIFIED DIMENSIONS ARE IN INCHES AND INCLUDE CHEMICALLY APPLIED OR PLATED FINISHES

DECIMALS  
.X ± .05  
.XX ± .01  
.XXX ± .005

FRACTIONS  
± 1/64  
ANGLES  
± 0° 30'

TOLERANCES

SCALE 1:1

CODE A

DATE 10-15-64  
CH. NO. Ø  
DRAFTS *RL*  
CHECKER *SRG*  
ENG. APP.

ORIGINAL RELEASE FOR PRODUCTION 10-15-64

EXP. RELEASE 10-13-64

UNLESS OTHERWISE SPECIFIED DIMENSIONS ARE IN INCHES AND INCLUDE CHEMICALLY APPLIED OR PLATED FINISHES

SCALE 1:1

CODE A

DATE 10-15-64  
CH. NO. Ø  
DRAFTS *RL*  
CHECKER *SRG*  
ENG. APP.

TYPE & TEMPER S404 YELLOW IRIDITE  
HEAT TREAT. SPEC.  
FINISH & SPEC. NO.

DRAWN SRG @ 10-14-64  
CHECKED *MP*  
FINAL APPROVAL *SRG*

ELEC. DES. APP. MECH. DES. APP. MS4069 Ø