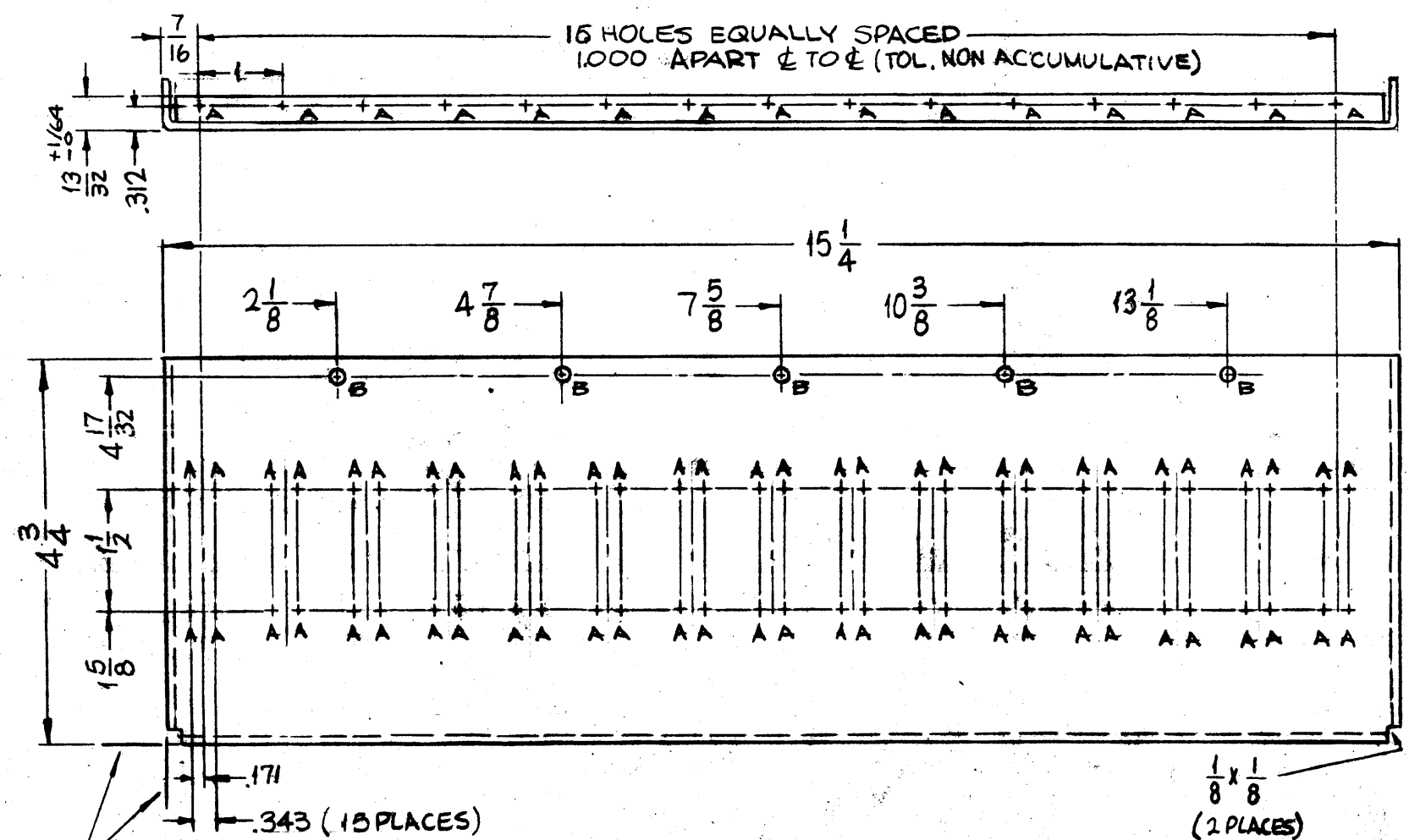


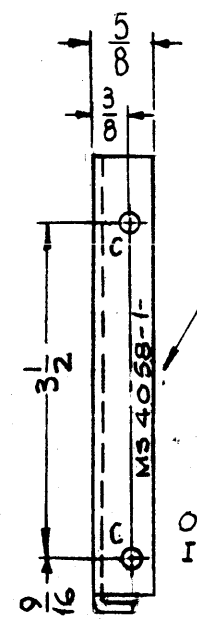
HOLE	DESCRIPTION	REQ
A	1/8 (.1250) DIA	75
B	11/64 DIA.	5
C	3/16 DIA	4

REVISIONS					
SYM	DESCRIPTION	DATE	E.M.N. NO.	DRAFT	CHKD
X	EXP. RELEASE	10-21-64	F	SRG	JM
Ø	ORIGINAL RELEASE FOR PRODUCTION	2-10-65	Ø	SRG	JM

MS 4058



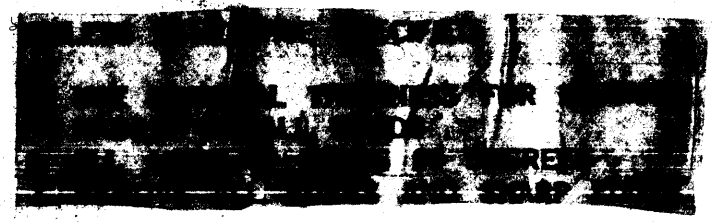
PART NO.	DESCR. PT.	HOLES	REQUIREMENTS	NO. REQ'D	BIN ASSY.#
MS 4058-1	AS DRAWN	A & B	NONE	1	A4121
MS 4058-2	OPPOS. HAND	A	LD1624 LD1623	1	A4120 A4119



METAL STAMP  
TMC PART NO.  
1/8 HIGH GOTHIC  
W/LATEST REV.  
LETTER.  
(STAMP MS 4058-2-  
FOR OPPOSITE  
HAND)

OPPOSITE SIDE  
IDENTICAL

LOCATING  
BASE  
LINES  
(TO BE LOCATED  
OFF "A" HOLE CENTER  
LINES ON FLANGE.)



NOTES

SEE CHART	RTIA - 1	SEE CHART
Q'TY./UNIT	MODEL USED ON	ASS'Y.
SCALE	CODE	
1/2:1	A	

THE CONTENTS OF THIS DRAWING ARE THE EXCLUSIVE PROPERTY OF THE TECHNICAL MATERIEL CORP. IT UNAUTHORIZED USE OR REPRODUCTION IN WHOLE OR IN PART IS STRICTLY FORBIDDEN.

REQ'D.	ITEM	PART NUMBER	DESCRIPTION	SYMBOL
EATON LIST OF MATERIAL				
MATERIAL .081 THICK ALUMINUM 5052-H 32			THE TECHNICAL MATERIEL CORP. MAMARONECK, NEW YORK	
FINISH S404 YELLOW IRIDIUM			TITLE PLATE, SIDE, P.C. CARD BIN	
UNLESS OTHERWISE SPECIFIED DIMENSIONS ARE IN INCHES AND INCLUDE CHEMICALLY APPLIED OR PLATED FINISHES			DRAWN SRG	DATE 10-22-64
DECIMALS .X ± .05 .XX ± .01 .XXX ± .005			CHECKED JM	DATE 2/8/65
FRACTIONS ± 1/64 ANGLES ± 0° 30'			DATE 2/8/65	DATE 2/8/65
TOLERANCES			W. JORDAN	MS 4058
				Ø
				SHEET
				REV. L