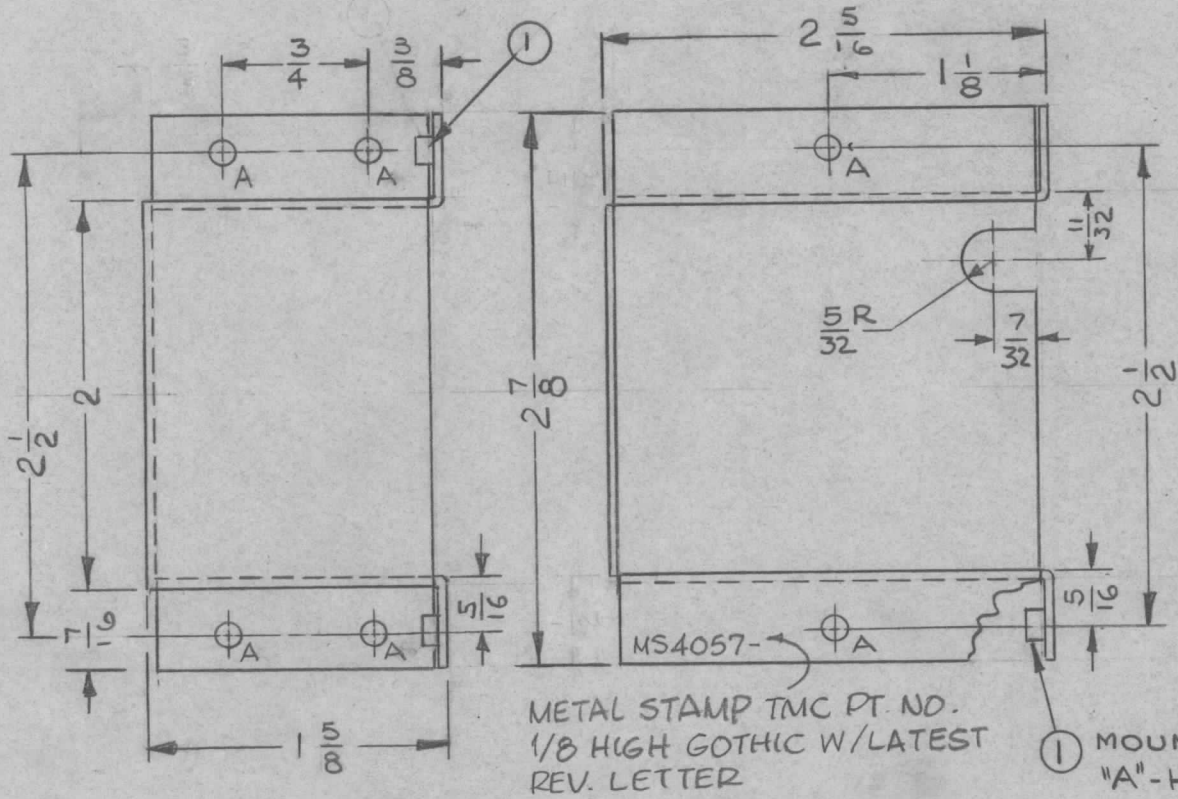


A - .161 - .164 DIA - 6 REQ

REQ. PER UNIT 1	USED ON			MS4057 A
	MODEL RTTD-1	ASS'Y. NO. A3706	DATE 10.1.64	



- UNLESS OTHERWISE SPECIFIED:
1. USE MATERIAL THICKNESS FOR MAXIMUM RADIUS ON ALL BENDS
 2. ALL ANGULAR BENDS 90 DEGREES
 3. REMOVE ALL BURRS AND SHARP EDGES
 4. MOUNT INSERTS AFTER FINISHING

A	IT.(2)(EY102-2) DELE. METAL STAMP ADDED	3.4.65	13612	JL.	JCB	JCB
Ø	ORIGINAL RELEASE FOR PRODUCTION	2.10.65	Ø	JL.	JCB	JCB
XZ	REV. 1 5/8 & 2 5/16 DIM. WAS 1 9/16 & 2 1/4; ADDED 7/16 DIM.	11/20/64	XZ	JL.	MUNFORD	W.J.
X1	CALLOUT ① W/NOTE ADDED	10.14.64	X1	W.B.	MUNFORD	W.J.
X	EXPER. RELEASE	10.1.64	X	W.B.		W.J.
SYM	DESCRIPTION	DATE	CH. NO.	DRAFTS	CHECKER	ENG. APP.
UNLESS OTHERWISE SPECIFIED DIMENSIONS ARE IN INCHES AND INCLUDE CHEMICALLY APPLIED OR PLATED FINISHES		SCALE 1:1				
DECIMALS .X ± .05 .XX ± .01 .XXX ± .005	TOLERANCES	FRACTIONS ± 1/64 ANGLES ± 0° 30'	CODE A			

2	DELETED		
6	1	NT129-440-3	NUT, PLAIN, SPLINE
REQ. ITEM	PART NO.	EATON	DESCRIPTION
		.064 THK	THE TECHNICAL MATERIEL CORP.
		STOCK SIZE	MAMARONECK, NEW YORK
		ALUMINUM	COVER, RELAY
		MATERIAL	
5052-H32	A	W.B.	JCB
TYPE & TEMPER	HEAT TREAT. SPEC.	DRAWN	CHECKED
S404 YELL. IRIDITE		W. JORDAN	2/18/65
FINISH & SPEC. NO.	ELEC. DES. APP.	MECH. DES. APP.	MS4057 A