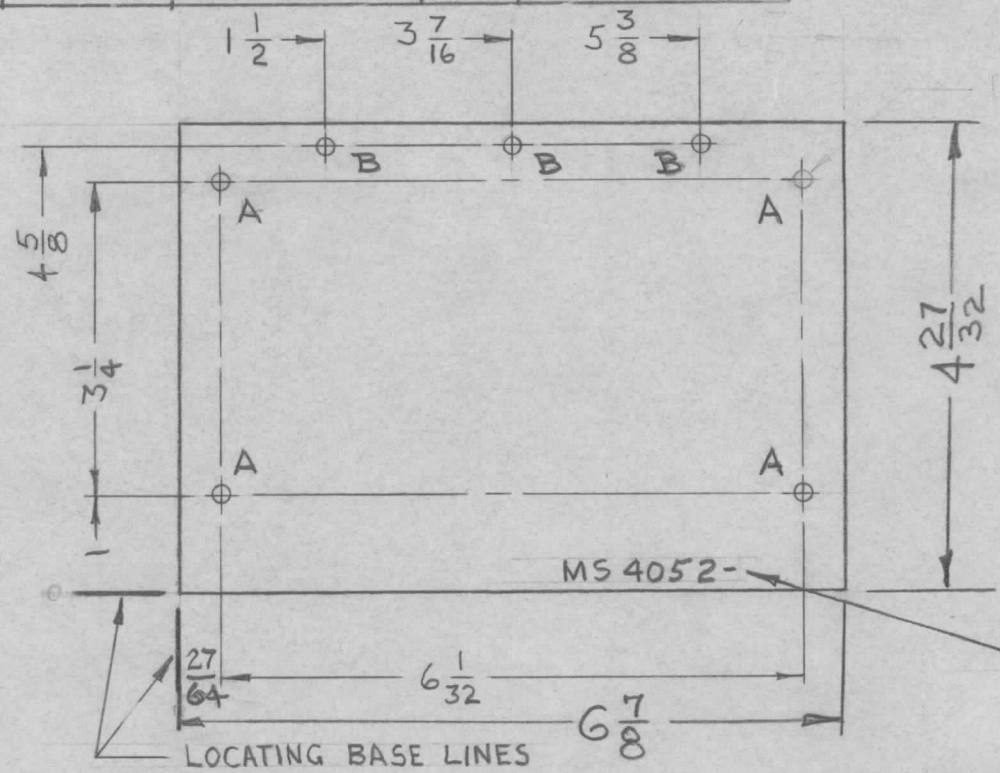


TMC PART #	HOLES REQ	MODEL USED ON	REQ	"LD" REF	REQ. PER UNIT	USED ON		
						MODEL	ASSY. NO.	DATE
MS 4052-1	"A" (ONLY)	RTMU-1	1	LD 1629	#	RTMU-1	A3908	1-18-65
		RTPA-1	1	LD 1630	#	RTPA-1	A3684	1-18-65
MS 4052-2	A & B	RTMU-1	1	NONE				
		RTPA-1	1	NONE				

MS 4052 Φ



HOLE LEGEND

HOLE	DIA.	REQ.
A	11/64 DIA	4 (SEE CHART)
B	11/64 DIA	3 (SEE CHART)

METAL STAMP TMC P/N
1/8 HIGH GOTHIC W/LATEST
REVISION LETTER.

REMOVE ALL BURRS & SHARP EDGES.

REF: MARKING REF (SEE CHART)

REQ.	ITEM	PART NO.	EATON	DESCRIPTION	SK3071 MS-1	SYMBOL
				.081 THK.		
				STOCK SIZE		
Φ	ORIGINAL RELEASE FOR PRODUCTION	1-18-65	Φ	JM		
X	EXPER. RELEASE		X	JL		
SYM	DESCRIPTION	DATE	CH. NO.	DRAFTS	CHECKER	ENG. APP.
UNLESS OTHERWISE SPECIFIED DIMENSIONS ARE IN INCHES AND INCLUDE CHEMICALLY APPLIED OR PLATED FINISHES		SCALE		2:1		
DECIMALS .X \pm .05 .XX \pm .01 .XXX \pm .005		FRACTIONS \pm 1/64 ANGLES \pm 0° 30'		TOLERANCES		
5052-H32		TYPE & TEMPER		HEAT TREAT. SPEC.		FINISH & SPEC. NO.
YELLOW IRIDITE PER S404		DRAWN		CHECKED		FINAL APPROVAL
ELEC. DES. APP.		MECH. DES. APP.		MS 4052 Φ		