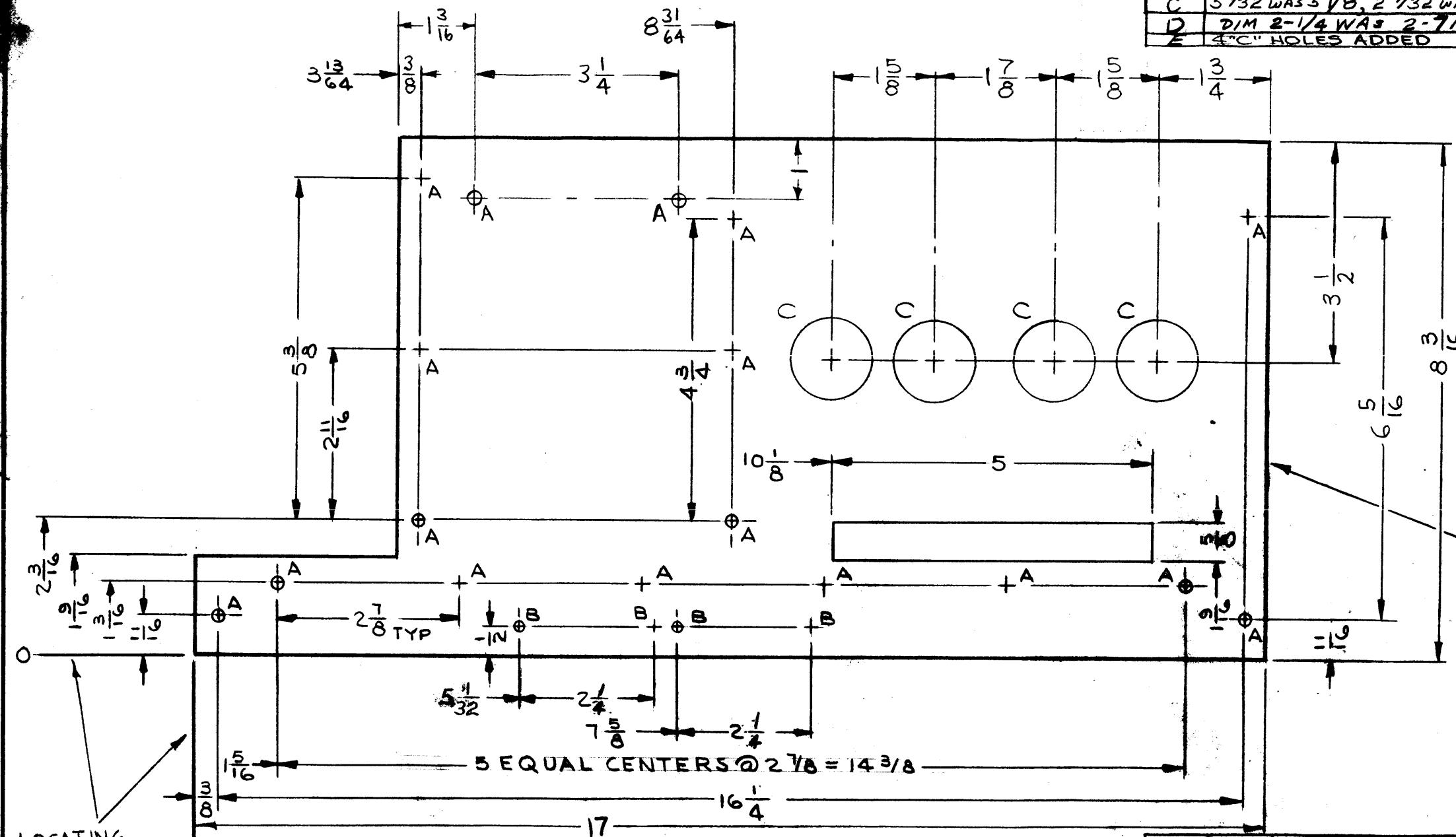


REVISIONS					
SYM	DESCRIPTION	DATE	E.M.N. NO.	DRAFT	CHKD APPD
X5	REDRAWN, NO CHANGES	1/13/68	X5	JL	
Ø	ORIGINAL RELEASE FOR PRODUCTION	1-18-65		AR	J.M.
A	2 "B" HOLES & LOC. DIM. DELE; 2 "A" HOLES & LOC. DIM. ADDED;	3/26/65	13620	RE	ØPZES
B	DIM. 4-3/4 WAS 2-3/4.	4/22/65	13914	RE	ØPZES
C	5/32 WAS 5/8, 2 7/32 WAS 2/8, 2 7/32 WAS 2/8	6/25/65	14348	D.V.V.	ØPZES
D	DIM 2-1/4 WAS 2-7/32 ("B" HOLES)	8/24/65	14716	RVV	ØPZES
E	4 "C" HOLES ADDED	10/27/66	17143	WHO	ØPZES

HOLE LEGEND		
HOLE	DESCRIPTION	REQ'D
A	3/16 DIA	17
B	1/16 DIA	4
C	1/4 DIA	4



ØPZES NO. 1/8 HOLE JOURNAL ON REAR W/LATEST REVISION LETTER

LOCATING BASE LINE

REMOVE ALL BURRS & SHARP EDGES

NOTES

REF.: LD 1662

1	RTMU-1	A3909
Q'TY./	MODEL USED ON	ASS'Y. NO.
SCALE	CODE	
1:2	A	

THE CONTENTS OF THIS DRAWING ARE THE EXCLUSIVE PROPERTY OF THE TECHNICAL MATERIEL CORP. ITS UNAUTHORIZED USE OR REPRODUCTION IN WHOLE OR IN PART IS STRICTLY FORBIDDEN.

REQ'D.	ITEM	PART NUMBER	DESCRIPTION	SYMBOL
F. E. EATON LIST OF MATERIAL				
MATERIAL Ø81THK ALUMINUM 5052-H32			THE TECHNICAL MATERIEL CORP. MAMARONECK, NEW YORK	
FINISH YELLOW IRIDITE PER S404			TITLE PLATE, REAR	
UNLESS OTHERWISE SPECIFIED DIMENSIONS ARE IN INCHES AND INCLUDE CHEMICALLY APPLIED OR PLATED FINISHES			DRAWN J. LESHINSKI	DATE 1/13/68
DECIMALS .X ± .05 .XX ± .01 .XXX ± .005			CHECKED J. M. JORDAN	DATE 1-18-68
FRACTIONS ± 1/64 ANGLES ± 0° 30'			ELECT. DES. W. JORDAN	DATE 1/18/68
			APPROVAL ROR	DATE
			MS4046	E
			SHEET	REV. LTR.