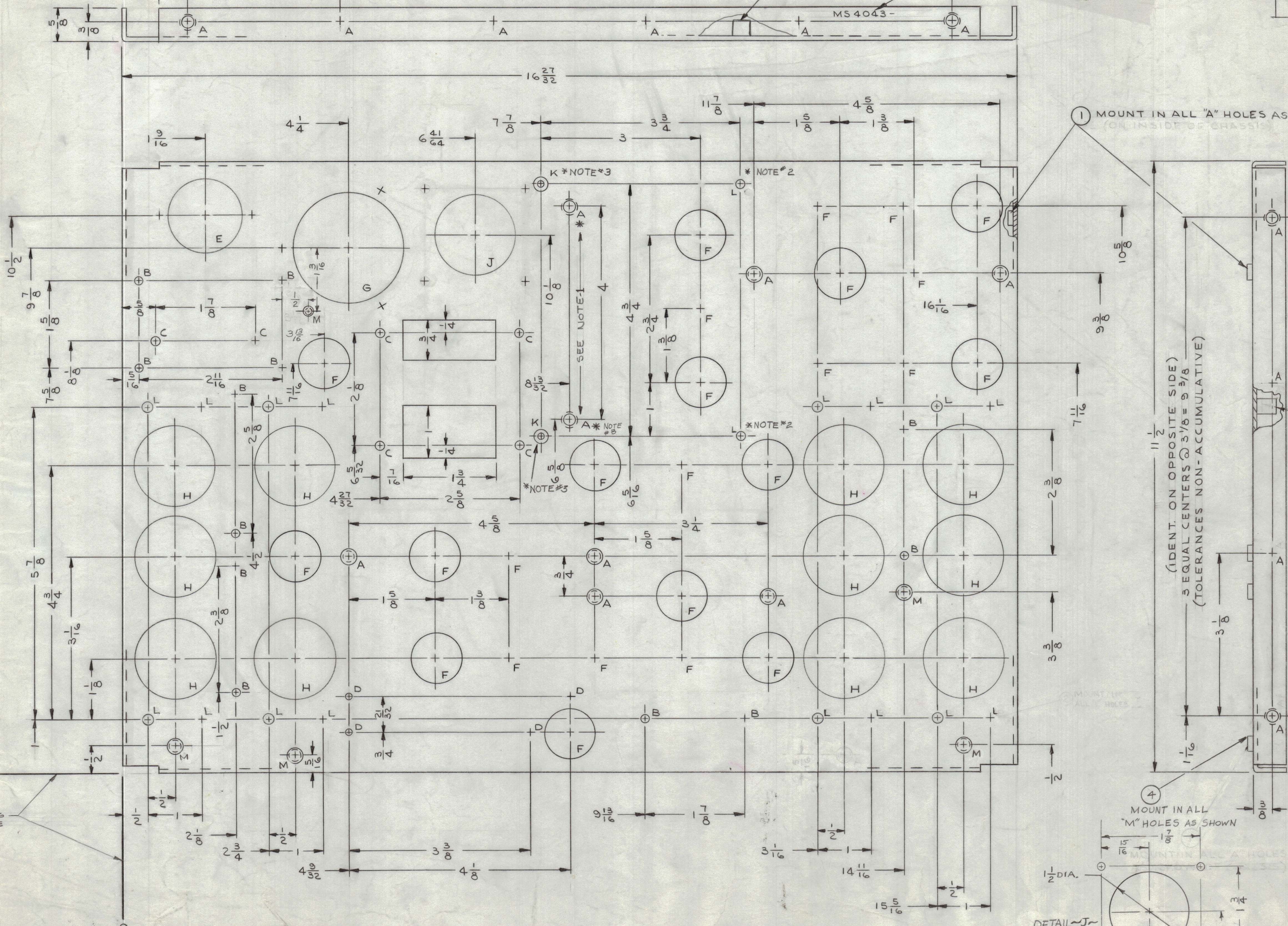


(THIS SIDE ONLY)
 5 EQUAL CENTERS @ $2\frac{7}{8} = 14\frac{3}{8}$
 (TOLERANCES NON-ACCUMULATIVE)

METAL STAMP TMC PART NO. 1/8
 HIGH GOTHIC W/LATEST REV. LETTER

REVISIONS						
ZONE	SYM	DESCRIPTION	DATE	E.M.N. NO.	DRAFT	CHKD
X6		REDRAWN & REVISED	2/26/64		JL	
X7		* NOTE ADDED ON (2) "A" HOLES	1/18/65		JL	J.M.
Q		ORIGINAL RELEASE FOR PRODUCTION	1/20/65		JL	J.M.
A		16 "E" HOLES CHANGED TO "L" HOLES; ON B/M: IT.(1) DES. UPDATED; IT.(2) ADD.	2-10-65	13458	JL	J.M.
B		27, 28, 29, 30, 31, 191-194 QTVS, NOTES 2 & 3 1/4 HOLE 1/3 CHANGES ADDED - 1/4 HOLE DELETED IT. 1/4 27 - 29, 30, 31, 191-194 QTVS, 1/4 1/8 - 1/4 1/8 - 1/4 1/8 - 1/4 1/8	1/18/65	1441	JL	J.M.



1 MOUNT IN ALL "A" HOLES AS SHOWN
 (ON INSIDE OF CHASSIS)

(IDENT. ON OPPOSITE SIDE)
 3 EQUAL CENTERS @ $3\frac{3}{8} = 9\frac{3}{8}$
 (TOLERANCES NON-ACCUMULATIVE)

2 MOUNT IN "L" HOLES, THIS SIDE

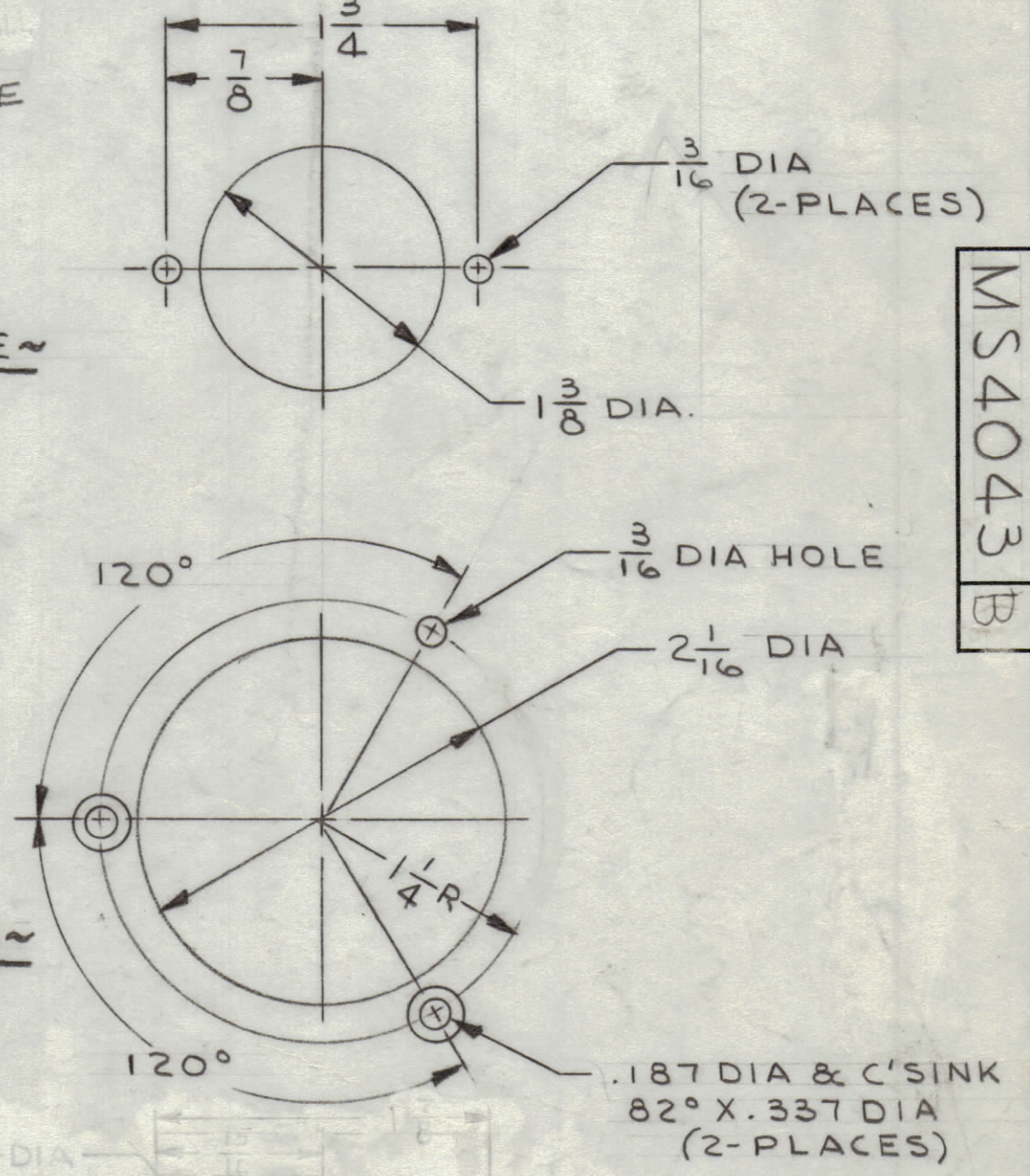
4 MOUNT IN ALL "M" HOLES AS SHOWN

HOLE LEGEND		
HOLE	DESCRIPTION	REQ'D
A	.221-.224 DIA	22
B	11/64 DIA	12
C	3/16 DIA	6
D	3/64 DIA	4
E	SEE DETAIL	1
F	15/16 DIA	25
G	SEE DETAIL	1
H	1/2 DIA	11
J	SEE DETAIL	1
K	.187 DIA & C'SINK 82° X .337 DIA	2
L	.189 DIA.	18
M	.191-.194 DIA.	5

DETAIL-E

DETAIL-G

DETAIL-J



* NOTE:
 1. ITEM 1 TO BE MOUNTED IN THESE 2 HOLES FROM REAR.
 2. MOUNT ITEM 3 IN THESE HOLES FROM REAR.
 3. MOUNT ITEM 5 IN K HOLES FROM REAR.

UNLESS OTHERWISE SPECIFIED:
 1. USE MATERIAL THICKNESS FOR MAXIMUM RADIUS ON ALL BENDS
 2. ALL ANGULAR BENDS 90 DEGREES
 3. REMOVE ALL BURRS AND SHARP EDGES
 4. MOUNT INSERTS AFTER FINISHING

NOTES

QTY./UNIT	MODEL USED ON	ASSY. NO.
1	RTMU-1	A3909

REQ'D.	ITEM	PART NUMBER	DESCRIPTION	SYMBOL
2	5	TE108-19	STANDOFF RIVET TYPE	K
2	4	NT-129-832-4	NUT, PLN, SPLINE	M
2	3	TE 108-16	STANDOFF RIVET TYPE	L
16	2	TE108-12	NUT, PLN, CLINCH	L
22	1	NT-129-832-4	NUT, PLN, SPLINE	A

F.E. EATON LIST OF MATERIAL SK-3071-MS-2

MATERIAL: .081 THK ALUMINUM 5052-H32

FINISH: YELLOW IRIDITE PER S404

UNLESS OTHERWISE SPECIFIED DIMENSIONS ARE IN INCHES AND INCLUDE CHEMICALLY APPLIED OR PLATED FINISHES

THE TECHNICAL MATERIEL CORP. THE TECHNICAL MATERIEL CORP. ITS UNAUTHORIZED USE OR REPRODUCTION IN WHOLE OR IN PART IS STRICTLY FORBIDDEN.

SCALE: 1:1

COOK

REGINALD J. JORDAN

FRACCTIONS: ± 1/64 ANGLE: ± 0° 30'

TOLERANCES: ± .005

DRAWN: J. LESHINSKI DATE: 12/11/64

CHECKED: DATE: 1/16/65

ELECT. DES. DATE: 1/16/65

MECH. DES. DATE: 1/18/65

FINAL APPROVAL: DATE: 1/18/65

TITLE: CHASSIS, ELECTRICAL, MAIN

MS4043 B

REVISIONS: 1

REPROVAL NO. 4408