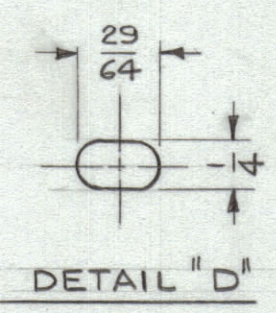
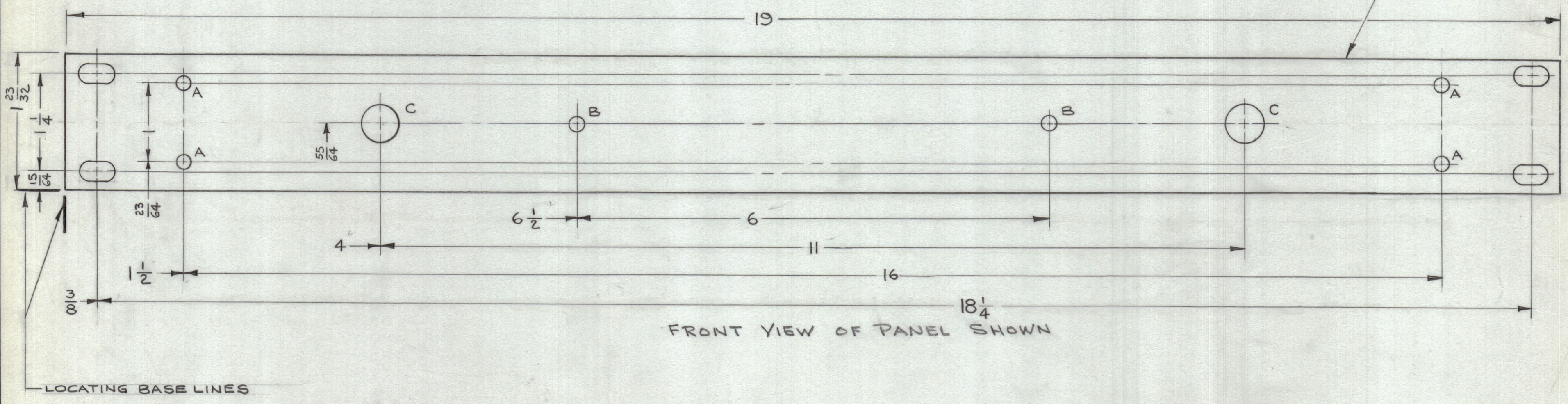


REVISIONS						
ZONE	SYM	DESCRIPTION	DATE	E.M.N. NO.	DRAFT	CHKD
X		EXPERIMENTAL RELEASE	1.15.65	X	KB	
Ø		ORIGINAL RELEASE FOR PRODUCTION	1.20.65	Ø	KB	JM

HOLE	DESCRIPTION	REQ.
A	.175 DIA	4
B	3/16 DIA	2
C	15/32 DIA	2
D	SEE DETAIL	4



METAL STAMP TMC P/N  
1/8 HIGH GOTHIC WITH  
LATEST REV. LETTER  
ON REAR OF PANEL



**MACHINING:**

1. MILL ALL EDGES.
2. HOLES MUST BE DRILLED, UNLESS OTHERWISE SPECIFIED.
3. LATERAL BOW OF PANEL MUST BE KEPT TO .031 TOLERANCE.
4. PANEL MUST BE FREE OF ALL MACHINING MARKS, GOUGES AND SCRATCHES. IF NECESSARY, SAND FRONT OF PANEL WITH NO. 120 GRIT SANDPAPER.

**FINISH NOTES:**

1. S404 - IRIDITE 14-2 AL-COAT.
2. S114 - ZINC CHROMATE PRIMER } FRONT AND
3. S115 - SMOOTH GRAY ENAMEL } EDGES ONLY

**NOTES**

Q'TY./UNIT	MODEL USED ON	ASS'Y. NO.
1	ECPA-1	A-100
SCALE	CODE	
1:1	A	

THE CONTENTS OF THIS DRAWING ARE THE EXCLUSIVE PROPERTY OF THE TECHNICAL MATERIEL CORP. ITS UNAUTHORIZED USE OR REPRODUCTION IN WHOLE OR IN PART IS STRICTLY FORBIDDEN.

REF: LD 1725

REQ'D.	ITEM	PART NUMBER	DESCRIPTION	SYMBOL
BUDGETT LIST OF MATERIAL				
MATERIAL		THE TECHNICAL MATERIEL CORP. MAMARONECK, NEW YORK		
3/16THK ALUMINUM 2024-T3		PANEL, FRONT		
FINISH		TITLE		
SEE NOTES		PANEL, FRONT		
UNLESS OTHERWISE SPECIFIED DIMENSIONS ARE IN INCHES AND INCLUDE CHEMICALLY APPLIED OR PLATED FINISHES		DRAWN KB		
DECIMALS		DATE 1.15.64		
.X ± .05		FINAL APPROVAL		
.XX ± .01		DATE 1-20-65		
.XXX ± .005		DATE 1-20-65		
TOLERANCES		MECH. DES. KB		
FRACTIONS ± 1/64		DATE 1-20-65		
ANGLES ± 0° 30'		SHEET		
		REV. LTR.		

MS 4041