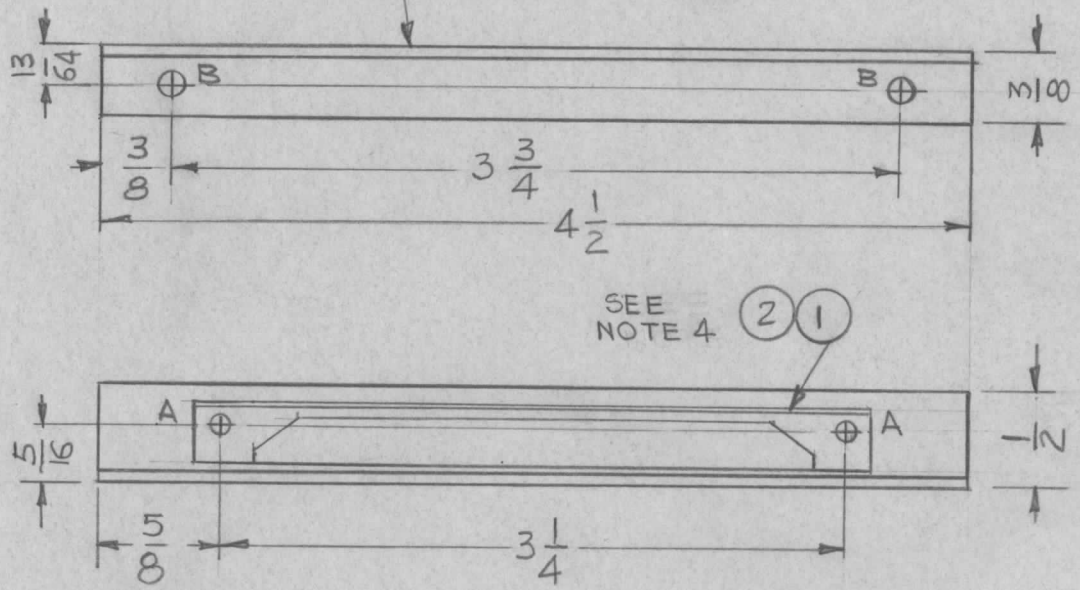


REQ. PER UNIT	USED ON		
	MODEL	ASS'Y. NO.	DATE
2	LESB-1		9-1-64

MS4014 A

METAL STAMP TMC PART NO. 1/8
HIGH GOTHIC W/LATEST REVISION LETTER



HOLE	DESCRIPTION	REQ.
A	.067 DIA.	2
B	1/8 DIA.	2

UNLESS OTHERWISE SPECIFIED:

1. USE MATERIAL THICKNESS FOR MAXIMUM RADIUS ON ALL BENDS
2. ALL ANGULAR BENDS 90 DEGREES
3. REMOVE ALL BURRS AND SHARP EDGES
4. MOUNT INSERTS AFTER FINISHING

2	2	EY100-5	EYELET, ROLLED FLANGE	A
1	1	CU157-4	RETAINER, P.C. BOARD	A
REQ. ITEM		PART NO.	GELLMAN DESCRIPTION	SYMBOL

A	IT. 1 WAS CU 157-1. IT. 2 WAS EY101-3. A HOLE WAS .090 DIA.	6-28-65	14359	D.V.V.		
Ø	ORIGINAL RELEASE FOR PRODUCTION	9-28-64	Ø	DL		
X	EXP. RELEASE	9-1-64	→	G.D.L.		
SYM	DESCRIPTION	DATE	CH. NO.	DRAFTS	CHECKER	ENG. APP.
UNLESS OTHERWISE SPECIFIED DIMENSIONS ARE IN INCHES AND INCLUDE CHEMICALLY APPLIED OR PLATED FINISHES		SCALE 1:1				
DECIMALS .X ± .05 .XX ± .01 .XXX ± .005	TOLERANCES	FRACTIONS ± 1/64 ANGLES ± 0° 30'	CODE A			

.064 THK		THE TECHNICAL MATERIEL CORP. MAMARONECK, NEW YORK			
ALUMINUM		BRACKET, SUPPORT DUMMY CARD			
MATERIAL					
5052-H32		G.D.L. 9-1-64	@	RAC	
TYPE & TEMPER	HEAT TREAT. SPEC.	DRAWN	CHECKED	FINAL APPROVAL	
5404 YEL. IRIDITE				MS4014 A	
FINISH & SPEC. NO.		ELEC. DES. APP.	MECH. DES. APP.		