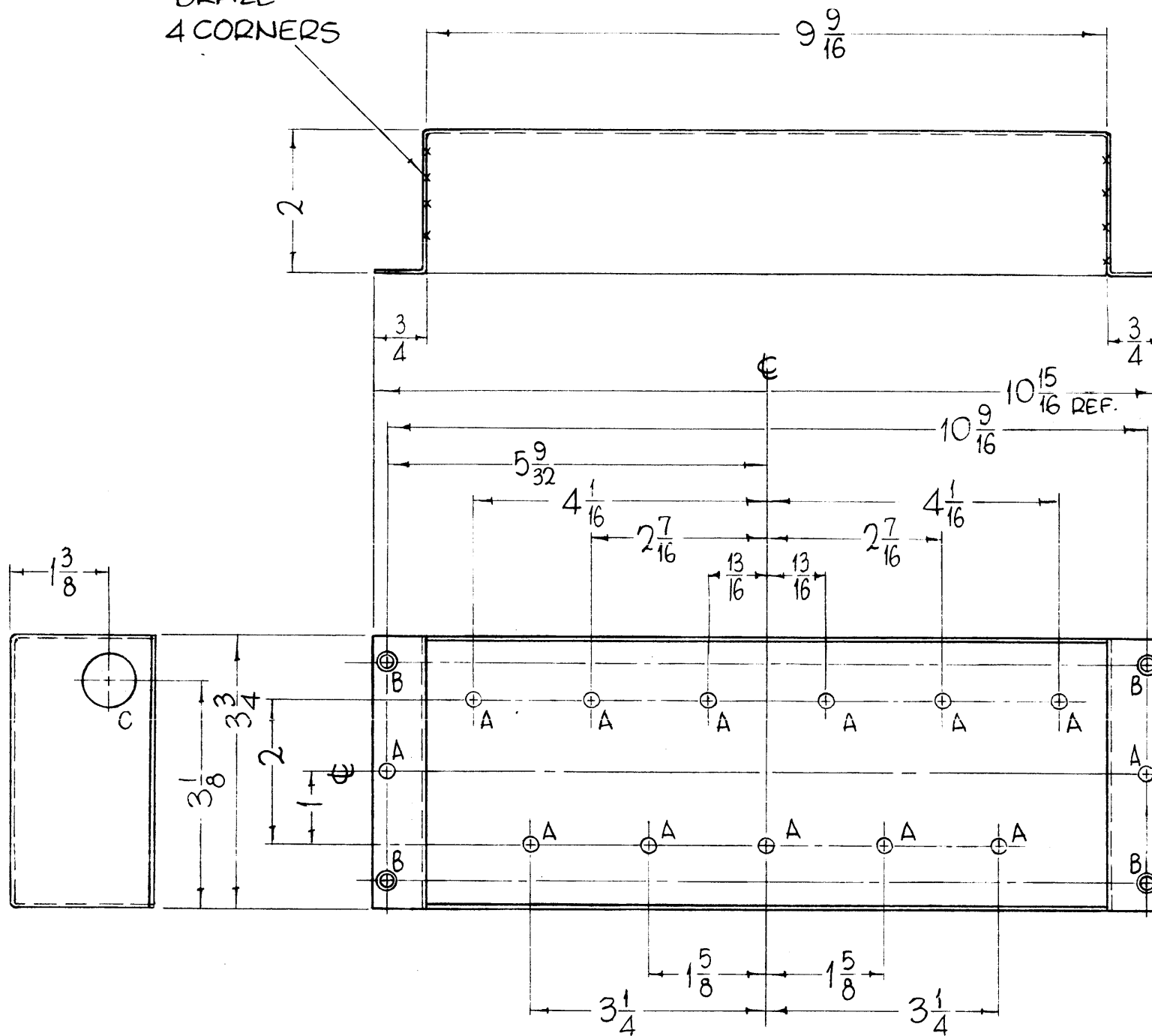


BRAZE  
4 CORNERS



MS3995 Ø

REVISIONS					
SYM	DESCRIPTION	DATE	E.M.N. NO.	DRAFT	CHKD
Ø	ORIGINAL RELEASE FOR PRODUCTION	8-24-64	4	JB	

HOLES	REQ.
A - 11/64 DIA.	13
B - DRILL & C'SK FOR 6-32 FHS	4
C - 3/4 DIA.	2

METAL STAMP TMC PART NO., 1/8 HIGH  
GOTHIC WITH LATEST REVISION LETTER,  
ON THIS SIDE OF LIP.

REF - TMC DWG. LD1591

- UNLESS OTHERWISE SPECIFIED:
1. USE MATERIAL THICKNESS FOR MAXIMUM RADIUS ON ALL BENDS
  2. ALL ANGULAR BENDS 90 DEGREES
  3. REMOVE ALL BURRS AND SHARP EDGES

NOTES

THE CONTENTS OF THIS DRAWING ARE THE EXCLUSIVE PROPERTY OF THE TECHNICAL MATERIEL CORP. ITS UNAUTHORIZED USE OR REPRODUCTION IN WHOLE OR IN PART IS STRICTLY FORBIDDEN.

REQ'D.	ITEM	PART NUMBER	DESCRIPTION	SYMBOL
F. BUDETTI LIST OF MATERIAL				
MATERIAL			THE TECHNICAL MATERIEL CORP.	
.064 THICK, ALUMINUM, 5052-H32			MAMARONECK, NEW YORK	
FINISH			TITLE	
S404-IRIDITE, 14-2, AL-COAT			BOX, R.F. FILTER	
UNLESS OTHERWISE SPECIFIED DIMENSIONS ARE IN INCHES AND INCLUDE CHEMICALLY APPLIED OR PLATED FINISHES		DRAWN	DATE	FINAL APPROVAL
		John C Biele	8-6-64	Rae
		CHECKED	DATE	
		ua		
		ELEC. DES.	DATE	
		JB		
		MECH. DES.	DATE	
		rae	8/24/63	
DECIMALS				MS 3995
.X ± .05				Ø
.XX ± .01				
.XXX ± .005				
FRACTIONS				
± 1/64				
ANGLES				
± 0° 30'				
TOLERANCES				
SHEET				REV. LTR.