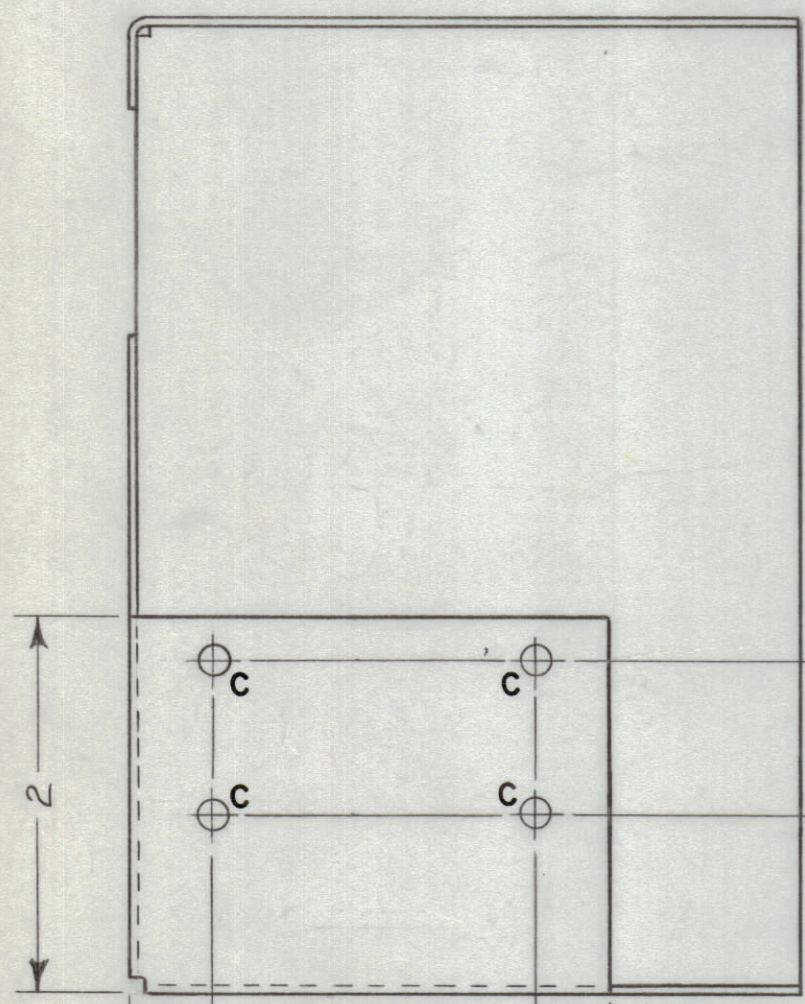
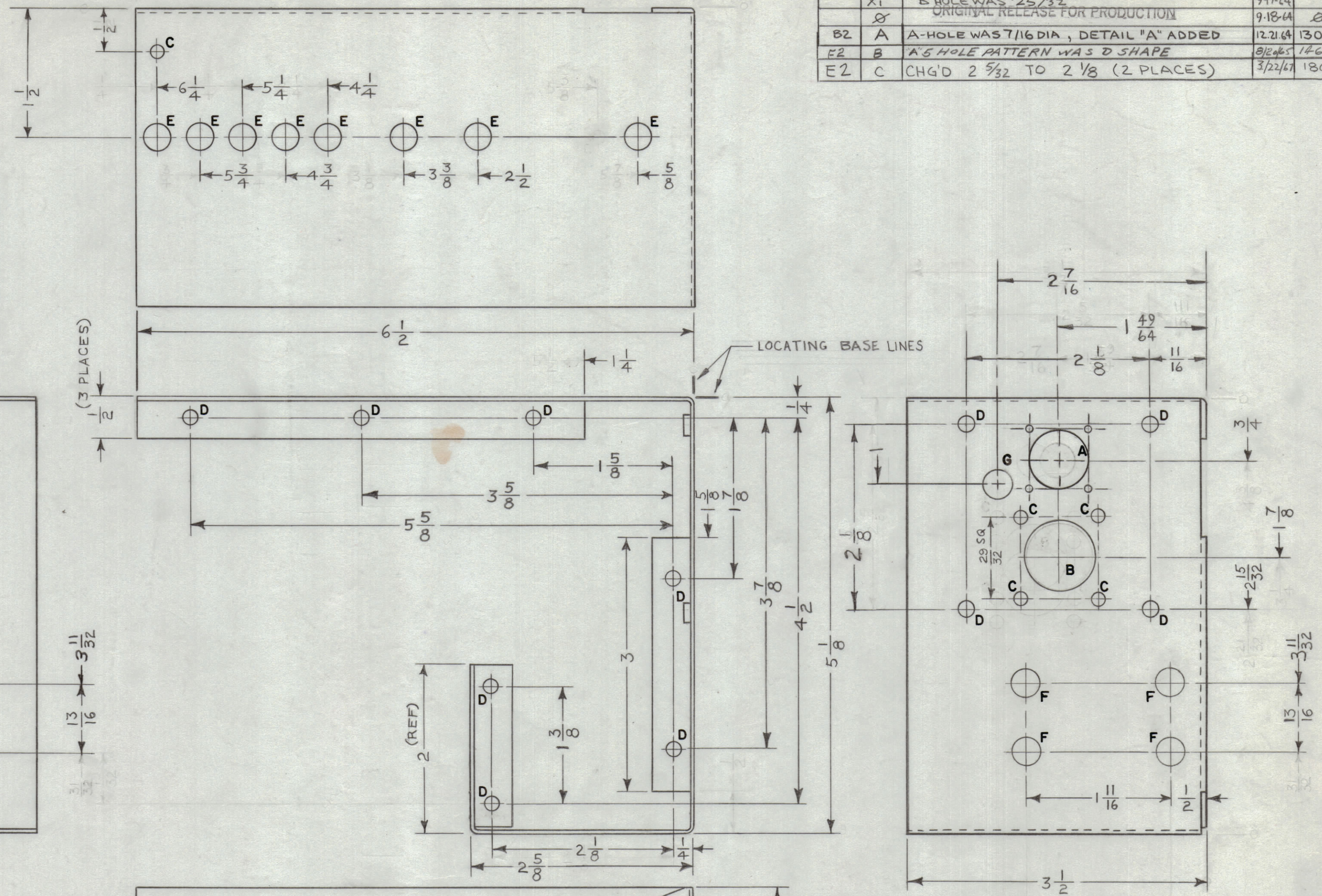


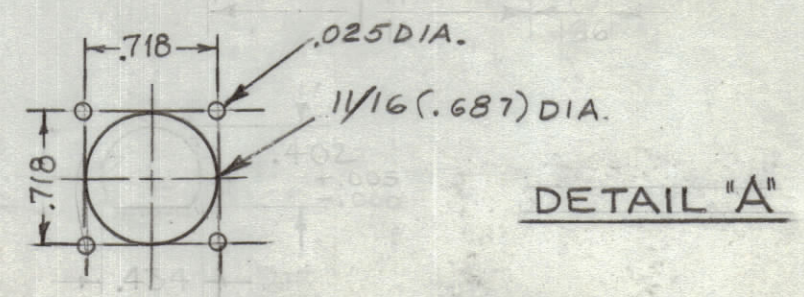
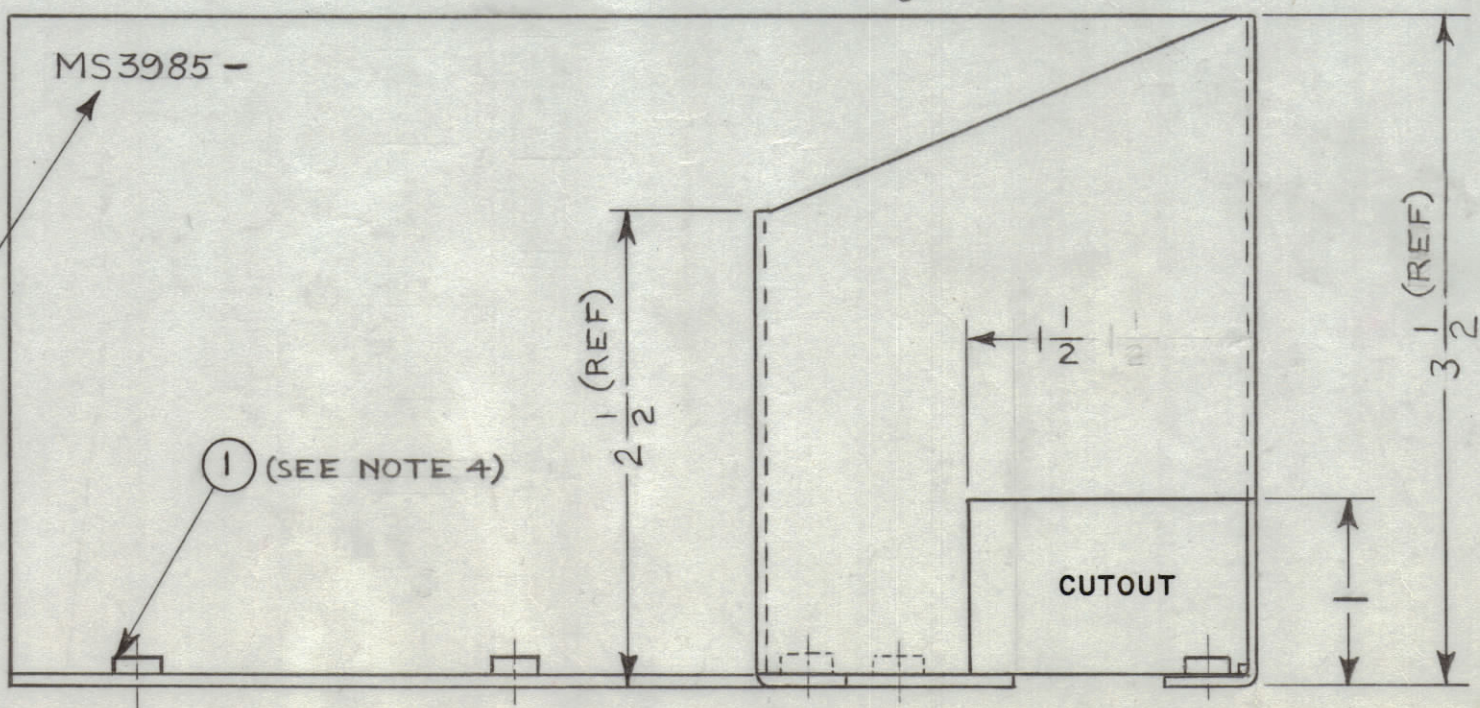
REVISIONS						
ZONE	SYM	DESCRIPTION	DATE	E.M.N. NO.	DRAFT	CHKD
	X	EXPERIMENTAL RELEASE	8-14-64		NP	
	X1	"B" HOLE WAS 25/32	9-17-64		SRG	
	Ø	ORIGINAL RELEASE FOR PRODUCTION	9-18-64	Ø	9.2.	
B2	A	A-HOLE WAS 7/16 DIA., DETAIL "A" ADDED	12-21-64	13023	ASB	
E2	B	A'S HOLE PATTERN WAS D SHAPE	8/12/65	14649	AVV	
E2	C	CHG'D 2 5/32 TO 2 1/8 (2 PLACES)	3/22/67	18009	RME	

HOLE LEGEND		
HOLE	DESCRIPTION	REQD
A	SEE DETAIL	1
B	13/16 DIA	1
C	5/32 DIA	9
D	#11 DR (.191)	11
E	5/16 DIA	8
F	3/8 DIA	4
G	21/64 DIA	1



METAL STAMP TMC PART NO. 1/8 HIGH GOTHIC ON REAR OF PANEL WITH LATEST REVISION LETTER

- UNLESS OTHERWISE SPECIFIED:
1. USE MATERIAL THICKNESS FOR MAXIMUM RADIUS ON ALL BENDS
 2. ALL ANGULAR BENDS 90 DEGREES
 3. REMOVE ALL BURRS AND SHARP EDGES
 4. MOUNT INSERTS AFTER FINISHING



1	TTC-1	
Q'TY./UNIT	MODEL USED ON	ASS'Y. NO.
SCALE 1:1	CODE A	

THE CONTENTS OF THIS DRAWING ARE THE EXCLUSIVE PROPERTY OF THE TECHNICAL MATERIEL CORP. ITS UNAUTHORIZED USE OR REPRODUCTION IN WHOLE OR IN PART IS STRICTLY FORBIDDEN.

11	1	NT129-632-4	NUT, ROUND, SWAGE TYPE	D
REQ'D.	ITEM	PART NUMBER	DESCRIPTION	SYMBOL
A. DUDDLES LIST OF MATERIAL				
MATERIAL .064 THICK 5052-H32 ALUMINUM			THE TECHNICAL MATERIEL CORP. MAMARONECK, NEW YORK	
FINISH IRIDITE 14-2 AL-COAT PER TMC S404			TITLE BRACKET, CONNECTOR	
UNLESS OTHERWISE SPECIFIED DIMENSIONS ARE IN INCHES AND INCLUDE CHEMICALLY APPLIED OR PLATED FINISHES			DRAWN N. Peters	DATE 8-14-64
DECIMALS .X ± .05 .XX ± .01 .XXX ± .005			CHECKED @	DATE 4-17-64
FRACTIONS ± 1/64 ANGLES ± 0° 30'			ELECT. DES. @	DATE 4-17-64
TOLERANCES			MECH. DES. @	DATE
SHEET				REV. LTR.

NOTES

MS3985 C