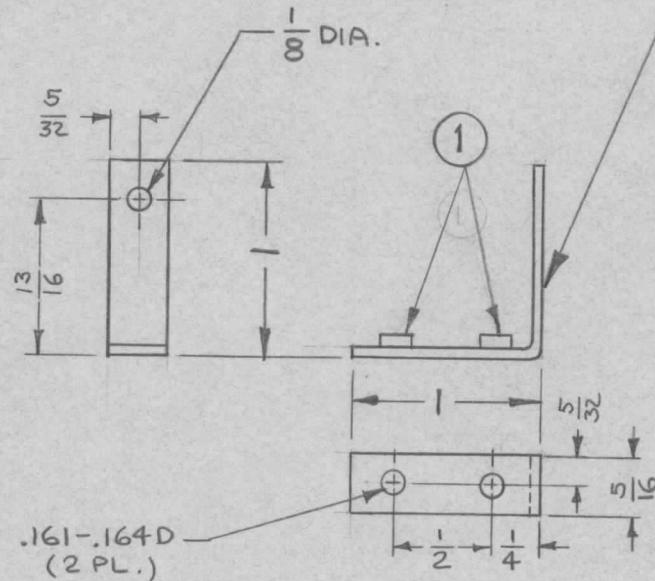


| | | | | | |
|---------------|---------|------------|--------|--------|---|
| REQ. PER UNIT | USED ON | | | MS3977 | Ø |
| | MODEL | ASS'Y. NO. | DATE | | |
| / | VLRB-1 | | 8.4.64 | | |

METAL STAMP TMC PART NO. 1/8
HIGH GOTHIC, WITH LATEST
REVISION LETTER.



UNLESS OTHERWISE SPECIFIED:

1. USE MATERIAL THICKNESS FOR MAXIMUM RADIUS ON ALL BENDS
2. ALL ANGULAR BENDS 90 DEGREES
3. REMOVE ALL BURRS AND SHARP EDGES
4. MOUNT INSERTS AFTER FINISHING

| | | | | | | |
|---|---------------------|---|--|-------------|----------------|-----------|
| 2 | 1 | NT-129-440-4 | NUT, ROUND, SWAGE TYPE | | | |
| REQ. ITEM | PART NO. | | GELLMAN | DESCRIPTION | SK 3136-MS-31 | SYMBOL |
| Ø | .081 | | THE TECHNICAL MATERIEL CORP. MAMARONECK, NEW YORK | | | |
| X ₁ | STOCK SIZE WAS .080 | | BRACKET, RELAY | | | |
| SYM | DESCRIPTION | DATE | CH. NO. | DRAFTS | CHECKER | ENG. APP. |
| UNLESS OTHERWISE SPECIFIED DIMENSIONS ARE IN INCHES AND INCLUDE CHEMICALLY APPLIED OR PLATED FINISHES | | SCALE 1:1 | | | | |
| DECIMALS .X ± .05 .XX ± .01 .XXX ± .005 | TOLERANCES | FRACTIONS ± 1/64 ANGLES ± 0° 30' | CODE A | | | |
| 5052-H32 | | HEAT TREAT. SPEC. | DRAWN | CHECKED | FINAL APPROVAL | |
| S404 YELL. IRIDITE | | | | | MS3977 Ø | |
| FINISH & SPEC. NO. | | ELEC. DES. APP. | MECH. DES. APP. | | | |