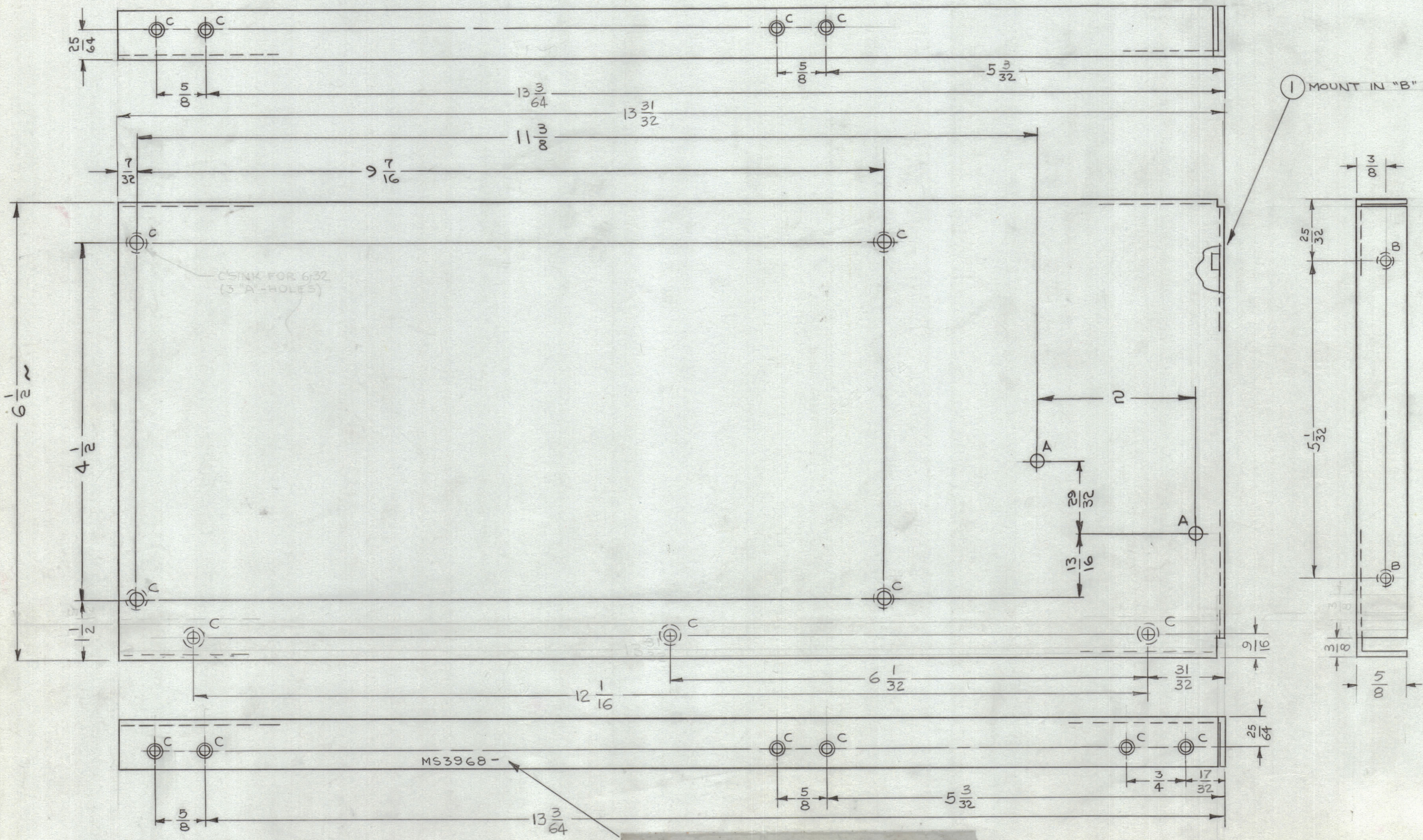


REVISIONS						
ZONE	SYM	DESCRIPTION	DATE	E.M.N. NO.	DRAFT	CHKD
#	X1	COMPLETELY REDESIGNED	6-16-63	2	W.B.	
#	X2	ITEM (1) ADDED; (2) "B" HOLES ADDED (10) "C" HOLES ADDED; (3) "C" HOLES WERE "A" HOLES ON TOP & BOTTOM VIEW "C" HOLES REDIMENSIONED - 3 "C" HOLES ADDED	6-24-64	3	W.B.	
#	X3		7-2-64		G.D.L.	
	Ø	ORIGINAL RELEASE FOR PRODUCTION	8-3-64	+	W.B.	



HOLE	DESCRIPTION	REQ
A	5/32 DIA	2
B	.191-.194 DIA	2
C	.144 D. CSNK 82° X .284 D.	17

UNLESS OTHERWISE SPECIFIED:

1. USE MATERIAL THICKNESS FOR MAXIMUM RADIUS ON ALL BENDS.
2. ALL ANGULAR BENDS 90°.
3. REMOVE ALL BURRS AND SHARP EDGES.
4. MOUNT INSERTS AFTER FINISHING.

METAL STAMP TMC PART NO. 1/8 HIGH GOTHIC, WITH LATEST REVISION LETTER.

REQ'D.	ITEM	PART NUMBER	DESCRIPTION	SYMBOL
2	1	NT129-632-4	NUT, ROUND, SWAGE TYPE	B

**GELLMAN LIST OF MATERIAL SK3136-MS-10**

MATERIAL	.081 ALUMINUM 5052-H32	TITLE	BRACE, CENTER
FINISH	S404 YELLOW IRIDITE	DRAWN	W. Langman
		CHECKED	W. Langman
		DATE	6-16-63
		DATE	8-3-64
		DATE	8-3-64
		DATE	8-3-64

UNLESS OTHERWISE SPECIFIED  
DIMENSIONS ARE IN INCHES AND INCLUDE  
CHEMICALLY APPLIED OR PLATED FINISHES

DECIMALS: .X ± .05, .XX ± .01, .XXX ± .005  
FRACTIONS: ± 1/64, ANGLES: ± 0° 30'

THE CONTENTS OF THIS DRAWING ARE THE EXCLUSIVE PROPERTY OF THE TECHNICAL MATERIEL CORP. ITS UNAUTHORIZED USE OR REPRODUCTION IN WHOLE OR IN PART IS STRICTLY FORBIDDEN.

NOTES: THE CONTENTS OF THIS DRAWING ARE THE EXCLUSIVE PROPERTY OF THE TECHNICAL MATERIEL CORP. ITS UNAUTHORIZED USE OR REPRODUCTION IN WHOLE OR IN PART IS STRICTLY FORBIDDEN.