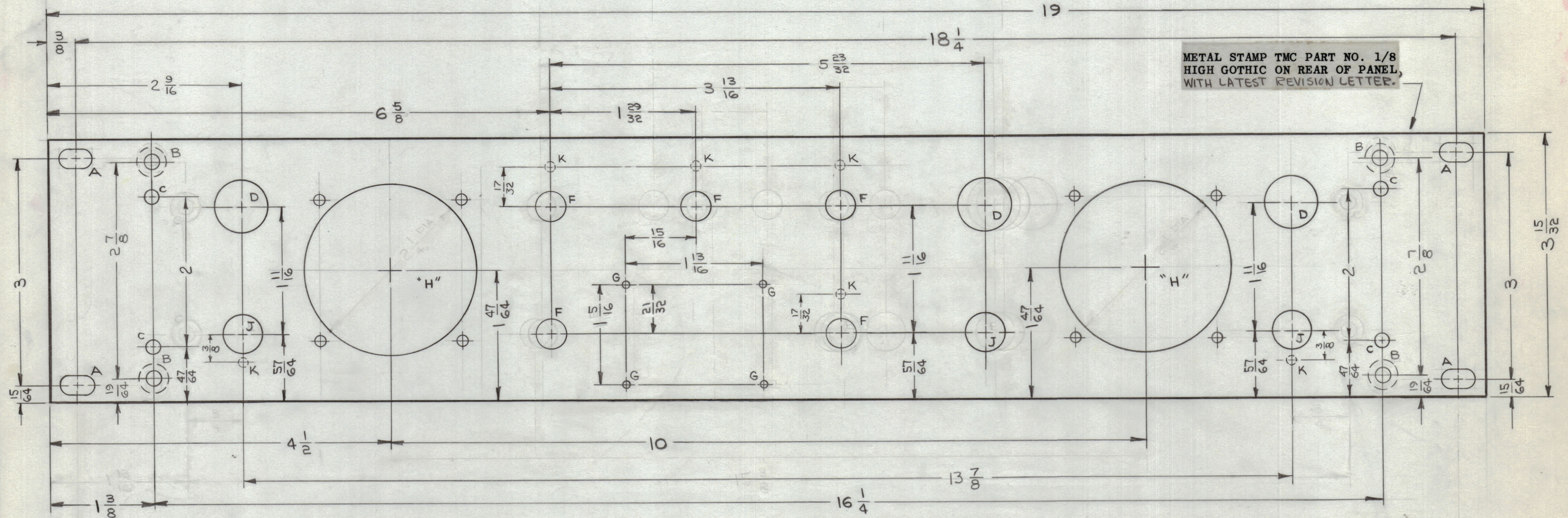
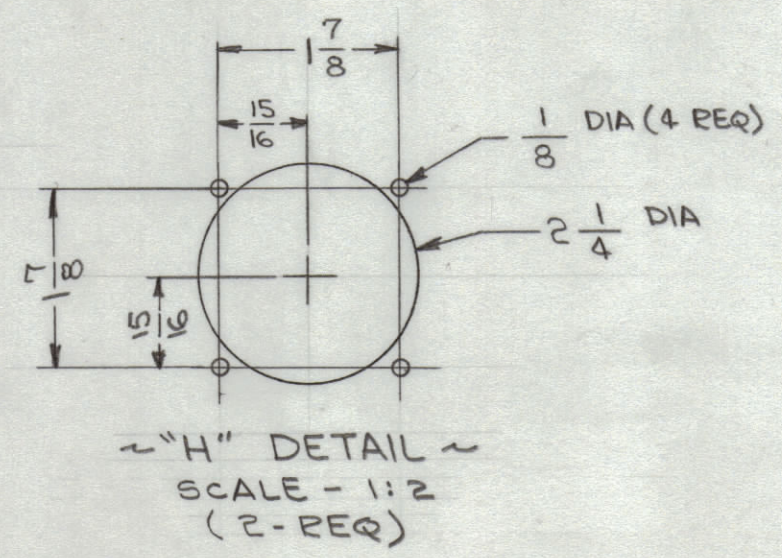


REVISIONS						
ZONE	SYM	DESCRIPTION	DATE	E.M.N. NO.	DRAFT	CHKD
#	X1	EXPER. RELEASE	6-27-64	1		
	X1	(4) "B" HOLES RELOCATED	7-9-64	2		@
	X2	(4) "C" HOLES RELOCATED, (1) "J" & (6) "K" HOLES ADDED "C" HOLE WAS 13/64 DIA. "E" HOLE WAS 4 REQ. "F" WAS REQ.	7-27-64			hwb
	X3	2 "E" HOLES DELETED, "J" HOLE WAS ONE	7-27-64			hwb
	Ø	ORIGINAL RELEASE FOR PRODUCTION	8-31-64	Ø		IL



HOLE	DESCRIPTION	REQ.
A	1/4 x 29/64 SLOT	4
B	.196 DIA HOLE, C'SINK 82° TO .390 DIA	4
C	11/64 DIA.	4
D	11/16 DIA.	3
E	DELETED	2
F	3/8 DIA.	5
G	.076 DIA.	4
H	SEE DETAIL	2
J	15/32	3
K	DR. FROM REAR 9/64 DIA 3/32 DP.	6



- FINISH NOTES:**
- S404 - IRIDITE 14-2 AL-COAT.
  - S114 - ZINC CHROMATE PRIMER) FRONT AND
  - S115 - SMOOTH GRAY ENAMEL ) EDGES ONLY

- MACHINING:**
- MILL ALL EDGES.
  - HOLES MUST BE DRILLED, UNLESS OTHERWISE SPECIFIED.
  - LATERAL BOW OF PANEL MUST BE KEPT TO .031 TOLERANCE.
  - PANEL MUST BE FREE OF ALL MACHINING MARKS, GOUGES AND SCRATCHES. IF NECESSARY, SAND FRONT OF PANEL WITH NO. 120 GRIT SANDPAPER.

REF: LD1574 (4)

REQ'D.	ITEM	PART NUMBER	DESCRIPTION	SYMBOL
GELLMAN LIST OF MATERIAL SK3136MS-1				
MATERIAL		THE TECHNICAL MATERIEL CORP. MAMARONECK, NEW YORK		
FINISH		TITLE PANEL, FRONT		
UNLESS OTHERWISE SPECIFIED DIMENSIONS ARE IN INCHES AND INCLUDE CHEMICALLY APPLIED OR PLATED FINISHES		DRAWN G. Sauer	DATE 6-29-64	FINAL APPROVAL [Signature]
DECIMALS .X ± .05 .XX ± .01 .XXX ± .005		CHECKED [Signature]	DATE 8-27-64	DATE
FRACTIONS ± 1/64 ANGLES ± 0° 30'		ELECT. DES. [Signature]	DATE	DATE
TOLERANCES		MECH. DES. [Signature]	DATE	DATE
		SHEET	MS3952	Ø

REF: LD1574

**NOTES**

LFCA-1		
QTY./UNIT	MODEL USED ON	ASSY. NO.
SCALE 1:1	CODE A	
THE CONTENTS OF THIS DRAWING ARE THE EXCLUSIVE PROPERTY OF THE TECHNICAL MATERIEL CORP. ITS UNAUTHORIZED USE OR REPRODUCTION IN WHOLE OR IN PART IS STRICTLY FORBIDDEN.		

MS 3952 Ø