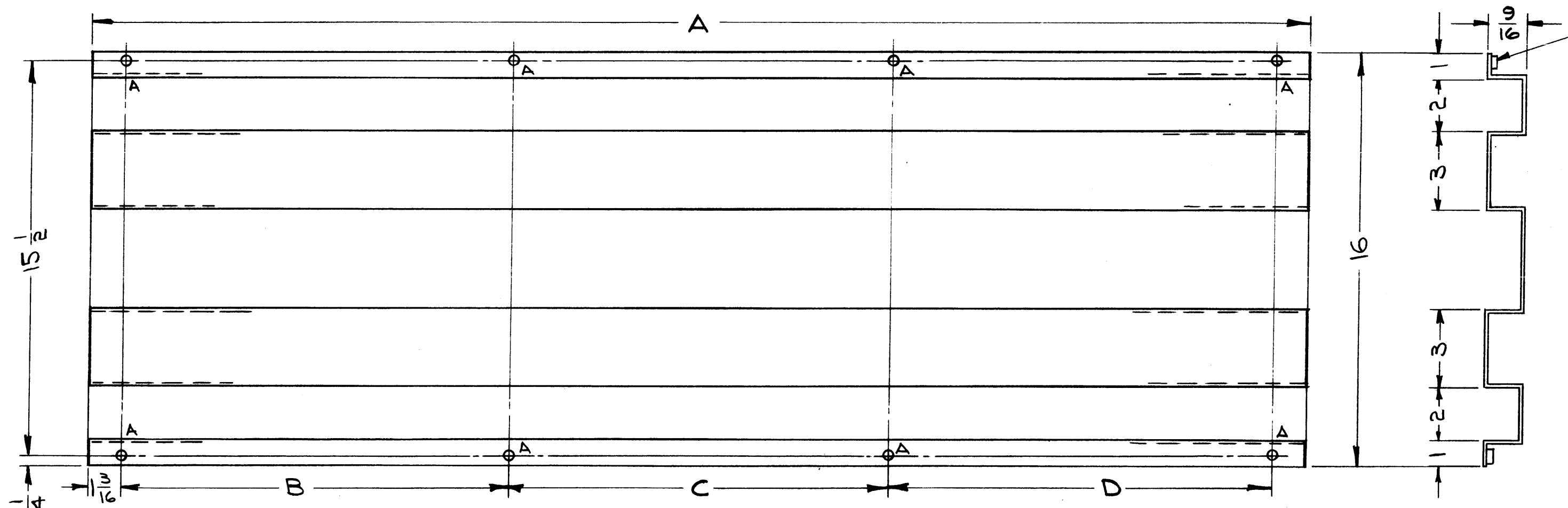


TMC PART NUMBER	DIMENSIONS				USED ON	MATERIAL	FINISH	REVISIONS						
	A	B	C	D				SYM	DESCRIPTION	DATE	E.M.N. NO.	DRAFT	CHKD	APPD
MS3948-1	REPLACED BY MS3884 (SHEET 6 OF 8)							X	EXPER. RELEASE	7/27/66	X	Plummer		
MS3948-2	58 7/16	18.687±.010	18.687±.010	18.687±.010	MS3954	16 GA STEEL	S114-ZN-CROMATE PRM S520-PAINT, BLU-GY TEX.	X1	MS3948-1 DELETED "A" 72 3/8 "B" 21±.010, "C" 28±.010 "D" 21±.010, ON-2 MS3954 ADDED TO-2	9/3/65	X1	JC	JLB	
MS3948-3	58 7/16	18.687±.010	18.687±.010	18.687±.010	MS4756-2	.063 THK ALUM 5052-H32	S404-TRIDITE YEL S114-ZN-CROMATE PRM S520-PAINT, BLU-GY TEX.	X2	MATERIAL, FINISH COL. & MS3948-3 ADDED 1/32R. DELETED	9/20/65	X2	H.V.		
								A	REPLACES MS3948-2, REDRAWN COMPLETELY	2-7-66	15675	HZA	JCB	MM

MOUNT IN ALL "A" HOLES AS SHOWN. ①



HOLE	DESCRIPTION	REQ.
A	.191-.194 DIA	8

REQ'D.	ITEM	PART NUMBER	DESCRIPTION	SYMBOL
8	1	NT129-632-4	NUT, PLAIN, SPLINE	A

M. STURMER		LIST OF MATERIAL		
MATERIAL	SEE CHART	THE TECHNICAL MATERIEL CORP. MAMARONECK, NEW YORK		
FINISH	SEE CHART	TITLE SUPPORT, CHAMBER, AIR		

- UNLESS OTHERWISE SPECIFIED:
1. USE MATERIAL THICKNESS FOR MAXIMUM RADIUS ON ALL BENDS
 2. ALL ANGULAR BENDS 90 DEGREES
 3. REMOVE ALL BURRS AND SHARP EDGES
 4. MOUNT INSERTS AFTER FINISHING

2	RAK-43	
Q'TY./UNIT	MODEL USED ON	ASS'Y. NO.
SCALE 1	CODE A	

UNLESS OTHERWISE SPECIFIED DIMENSIONS ARE IN INCHES AND INCLUDE CHEMICALLY APPLIED OR PLATED FINISHES		DRAWN G. Sauer	DATE 7/27/66	FINAL APPROVAL [Signature]	DATE 2/29/66
DECIMALS .X ± .05 .XX ± .01 .XXX ± .005	FRACTIONS ± 1/64 ANGLES ± 0° 30'	CHECKED JCB	DATE 2-9-66	M53948	
TOLERANCES		ELECT. DES.	DATE	A	
		MECH. DES.	DATE	REV. LTR.	

NOTES

THE CONTENTS OF THIS DRAWING ARE THE EXCLUSIVE PROPERTY OF THE TECHNICAL MATERIEL CORP. ITS UNAUTHORIZED USE OR REPRODUCTION IN WHOLE OR IN PART IS STRICTLY FORBIDDEN.