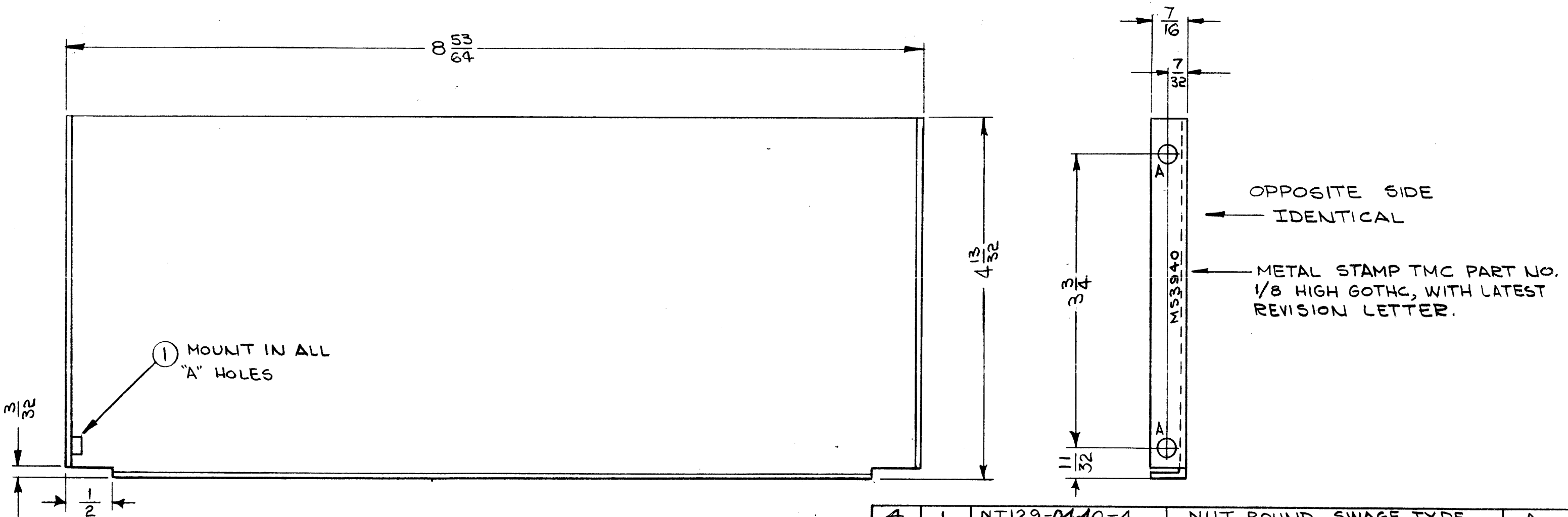


HOLE	DESCRIPTION	REQ.
A	.161-.164 DIA	4

MS3940

REVISIONS					
SYM	DESCRIPTION	DATE	E.M.N. NO.	DRAFT	CHKD
X	EXPERIMENTAL RELEASE	7-21-64	X	NP	
X1	BOTTOM LIP ADDED	8-24-64	X1	<i>J. Peter</i>	
X2	DIMS. 4-31/32 WAS 4-25/32; 3-3/4 WAS 4-1/8	8-31-64	X2	<i>J. Peter</i>	
X3	7/16 WAS 3/8	7-11-64	X3	@	
Ø	ORIGINAL RELEASE FOR PRODUCTION	9-28-64	Ø	<i>J.L.</i>	



- UNLESS OTHERWISE SPECIFIED:
1. USE MATERIAL THICKNESS FOR MAXIMUM RADIUS ON ALL BENDS
 2. ALL ANGULAR BENDS 90 DEGREES
 3. REMOVE ALL BURRS AND SHARP EDGES
 4. MOUNT INSERTS AFTER FINISHING

NOTES

14	LFSB-1	
QTY./UNIT	MODEL USED ON	ASS'Y. NO.
SCALE 1:1	CODE A	

THE CONTENTS OF THIS DRAWING ARE THE EXCLUSIVE PROPERTY OF THE TECHNICAL MATERIEL CORP. ITS UNAUTHORIZED USE OR REPRODUCTION IN WHOLE OR IN PART IS STRICTLY FORBIDDEN.

4	1	NT129-0440-4	NUT, ROUND, SWAGE TYPE	A
REQ'D.	ITEM	PART NUMBER	DESCRIPTION	SYMBOL

M. GELLMAN LIST OF MATERIAL

MATERIAL .064 ALUMINUM 5052-H32

FINISH S404 - YELLOW IRIDITE

THE TECHNICAL MATERIEL CORP. MAMARONECK, NEW YORK

TITLE SEPARATOR, MODULE

UNLESS OTHERWISE SPECIFIED DIMENSIONS ARE IN INCHES AND INCLUDE CHEMICALLY APPLIED OR PLATED FINISHES

DECIMALS	FRACTIONS
.X ± .05	± 1/64
.XX ± .01	ANGLES ± 0° 30'
.XXX ± .005	

DRAWN <i>N. Peter</i>	DATE 7-21-64	FINAL APPROVAL <i>RJ</i>	DATE
CHECKED @	DATE 7-15-64		
ELECT. DES.	DATE	MS3940	Ø
MECH. DES. <i>M. Gellman</i>	DATE 7-27-64	SHEET	REV. LTR.