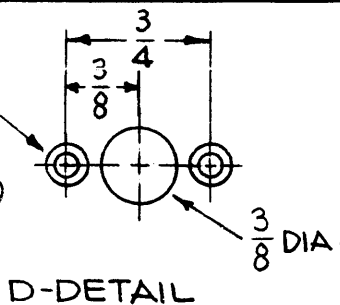


HOLE	DESCRIPTION	REQ.
A	.191-.194 DIA.	4
B	#27 DR. (.444) C'SK 82° ON REAR TO .284 DIA.	6
C	1/4 DIA.	6
D	SEE DETAIL	4

7/64 (.109) DIA.
C'SINK 82° TO
.204 DIA. (2REQ.)

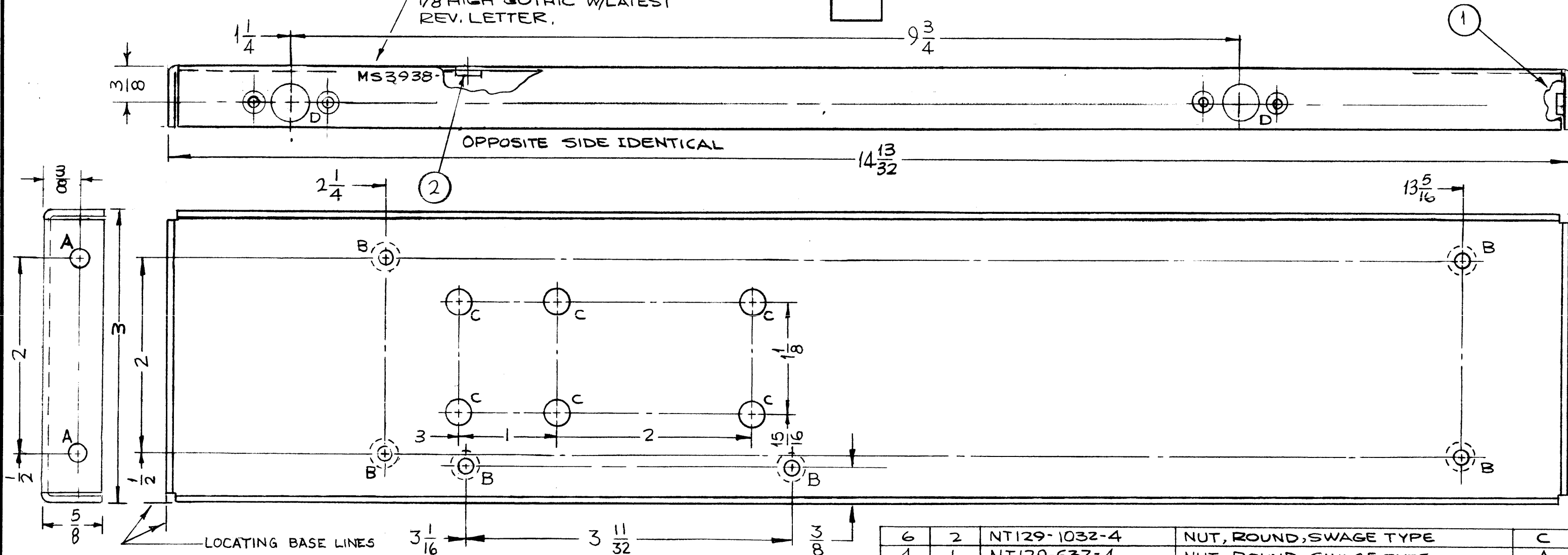


D-DETAIL

MS3938

REVISIONS					
SYM	DESCRIPTION	DATE	E.M.N. NO.	DRAFT	CHKD APPD
X	EXPERIMENTAL RELEASE	8-21-64	X	SRG	
Ø	ORIGINAL RELEASE FOR PRODUCTION	8-31-64	Ø	JL.	
A	2'B' HOLES RELOC. C'SINK ON ALL 'B' HOLES REVERSED	9-25-64	12459	JL.	@ [Signature]

METAL STAMP TMC PART NO.
1/8 HIGH GOTHIC W/LATEST
REV. LETTER.



OPPOSITE SIDE IDENTICAL

LOCATING BASE LINES

UNLESS OTHERWISE SPECIFIED:

1. USE MATERIAL THICKNESS FOR MAXIMUM RADIUS ON ALL BENDS
2. ALL ANGULAR BENDS 90 DEGREES
3. REMOVE ALL BURRS AND SHARP EDGES
4. MOUNT INSERTS AFTER FINISHING

NOTES

1	LFC-A-1	
QTY./UNIT	MODEL USED ON	ASS'Y. NO.
SCALE 1:1	CODE A	

THE CONTENTS OF THIS DRAWING ARE THE EXCLUSIVE PROPERTY OF THE TECHNICAL MATERIEL CORP. ITS UNAUTHORIZED USE OR REPRODUCTION IN WHOLE OR IN PART IS STRICTLY FORBIDDEN.

REQ'D.	ITEM	PART NUMBER	DESCRIPTION	SYMBOL
6	2	NT129-1032-4	NUT, ROUND, SWAGE TYPE	C
4	1	NT129-632-4	NUT, ROUND, SWAGE TYPE	A

M. GELLMAN		LIST OF MATERIAL	
MATERIAL .081 THICK ALUMINUM 5052-H32		THE TECHNICAL MATERIEL CORP. MAMARONECK, NEW YORK	
FINISH S404 YELLOW IRIDITE		TITLE PLATE, LEFT SIDE	
UNLESS OTHERWISE SPECIFIED DIMENSIONS ARE IN INCHES AND INCLUDE CHEMICALLY APPLIED OR PLATED FINISHES		DRAWN SRG	DATE 8-21-64
DECIMALS .X ± .05 .XX ± .01 .XXX ± .005		CHECKED [Signature]	DATE 9-1-64
FRACTIONS ± 1/64 ANGLES ± 0° 30'		ELECT. DES. [Signature]	DATE
TOLERANCES		MECH. DES.	DATE
		FINAL APPROVAL [Signature]	
		DATE	
		SHEET	
		MS3938	
		A	
		REV. LTR.	