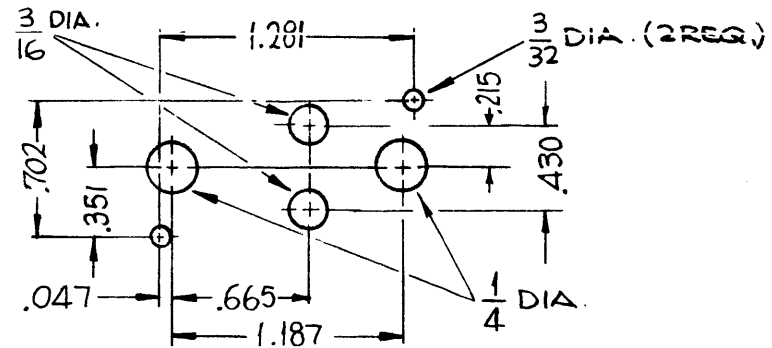


HOLE	DESCRIPTION	REQ.
A	.191-.194 DIA.	4
B	5/32 DIA.	9
C	1/8 DIA.	4
D	SEE DETAIL	3
E	13/64 DIA.	1

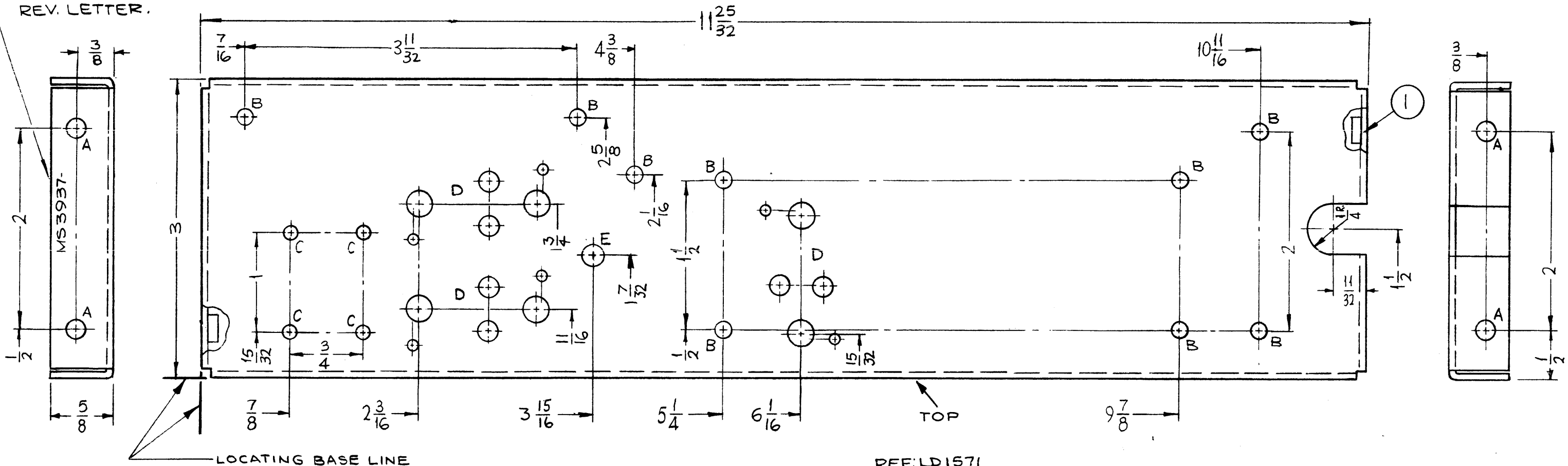


D-DETAIL

MS3937 A

REVISIONS					
SYM	DESCRIPTION	DATE	E.M.N. NO.	DRAFT	CHKD
X	EXPERIMENTAL RELEASE	8-17-64	X	SRG	
X <sub>1</sub>	DIMENSIONING METHOD CHANGED	8-28-64	X.	MB	
Ø	ORIGINAL RELEASE FOR PRODUCTION	8-31-64	Ø	AL	
A	"E" HOLE W/LOC. DIM. ADD. TO PICT. & HOLE LEGEND.	2-1-65	13392	SR	JKS

METAL STAMP TMC PART NO. 1/8 HIGH GOTHIC W/LATEST REV. LETTER.



**UNLESS OTHERWISE SPECIFIED:**

1. USE MATERIAL THICKNESS FOR MAXIMUM RADIUS ON ALL BENDS
2. ALL ANGULAR BENDS 90 DEGREES
3. REMOVE ALL BURRS AND SHARP EDGES
4. MOUNT INSERTS AFTER FINISHING

**NOTES**

REF: LD1571

4	1	NT 129-632-4	NUT, ROUND, SWAGE TYPE	A
REQ'D.	ITEM	PART NUMBER	DESCRIPTION	SYMBOL
M. GELLMAN			LIST OF MATERIAL	
MATERIAL .081 THICK ALUMINUM 5052-H32			THE TECHNICAL MATERIEL CORP. MAMARONECK, NEW YORK	
FINISH S404 YELLOW IRIDITE			TITLE CHANNEL, RIGHT SIDE	
UNLESS OTHERWISE SPECIFIED DIMENSIONS ARE IN INCHES AND INCLUDE CHEMICALLY APPLIED OR PLATED FINISHES			DRAWN SRG	DATE 8-17-64
DECIMALS .X ± .05 .XX ± .01 .XXX ± .005			TOLERANCES	FRACTIONS ± 1/64 ANGLES ± 0° 30'
THE CONTENTS OF THIS DRAWING ARE THE EXCLUSIVE PROPERTY OF THE TECHNICAL MATERIEL CORP. ITS UNAUTHORIZED USE OR REPRODUCTION IN WHOLE OR IN PART IS STRICTLY FORBIDDEN.			CHECKED @	DATE 9-1-64
			ELECT. DES. @	DATE
			MECH. DES.	DATE
			FINAL APPROVAL KRC	DATE
			MS 3937	A
			SHEET	REV. LTR.