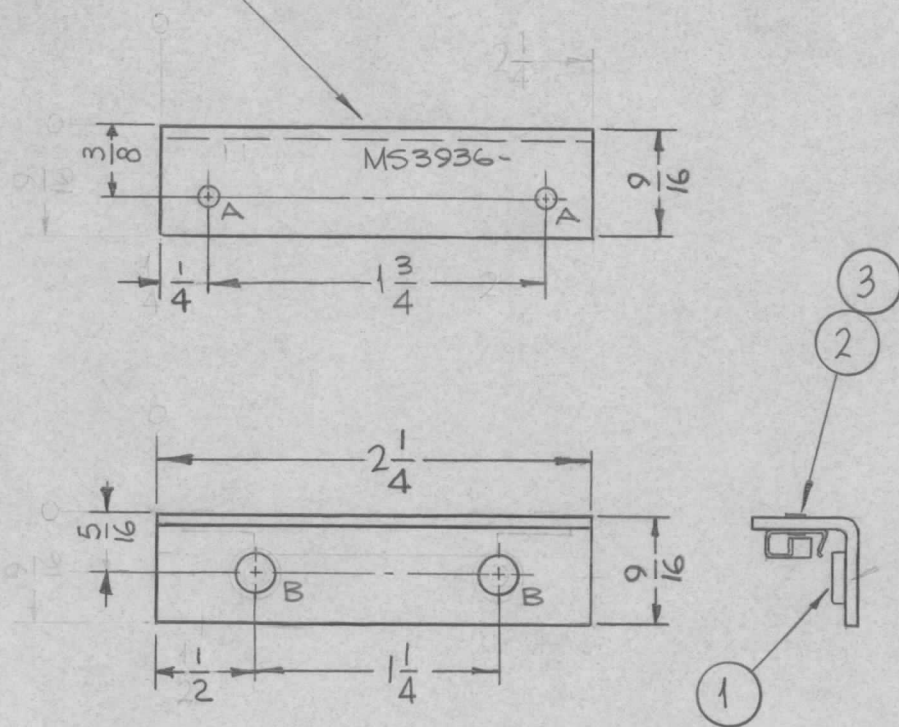


METAL STAMP TMC PART NO.
1/8 HIGH GOTHIC W/LATEST
REV. LETTER.

REQ. PER UNIT	USED ON			MS3936 Ø
	MODEL	ASS'Y. NO.	DATE	
2	LFCA-1		8-17-64	



HOLE	DESCRIPTION	REQ.
A	3/32 DIA.	2
B	.191-.194 DIA.	2

UNLESS OTHERWISE SPECIFIED:

1. USE MATERIAL THICKNESS FOR MAXIMUM RADIUS ON ALL BENDS
2. ALL ANGULAR BENDS 90 DEGREES
3. REMOVE ALL BURRS AND SHARP EDGES
4. MOUNT INSERTS & RETAINERS AFTER FINISHING

2	3	EY101-3	EYLET, ROLLED FLANGED	A
1	2	CU157-2	RETAINER PC BOARD	A
2	1	NT129-632-4	NUT, ROUND, SWAGE TYPE	B

SYM	DESCRIPTION	DATE	CH. NO.	DRAFTS	CHECKER	ENG. APP.	REQ. ITEM	PART NO.	M. GELLMAN DESCRIPTION	SYMBOL	
Ø	ORIGINAL RELEASE FOR PRODUCTION	8-31-64	Ø	FL					.064 THICK STOCK SIZE ALUMINUM MATERIAL	THE TECHNICAL MATERIEL CORP. MAMARONECK, NEW YORK BRACKET, RISER CARD STORAGE	
X ₁	DIM. METHOD CHANGED	8-28-64	X ₁	HB							
X	EXPERIMENTAL RELEASE	8-17-64	X	SRG							
UNLESS OTHERWISE SPECIFIED DIMENSIONS ARE IN INCHES AND INCLUDE CHEMICALLY APPLIED OR PLATED FINISHES							SCALE 1:1				
DECIMALS .X ± .05 .XX ± .01 .XXX ± .005		FRACTIONS ± 1/64 ANGLES ± 0° 30'		TOLERANCES A		CODE A		5052-H32		SRG @ RC	
								TYPE & TEMPER 5404 YELLOW IRIDITE		HEAT TREAT. SPEC.	
								DRAWN		CHECKED	
								FINISH & SPEC. NO.		ELEC. DES. APP. MECH. DES. APP.	
										FINAL APPROVAL MS3936 Ø	