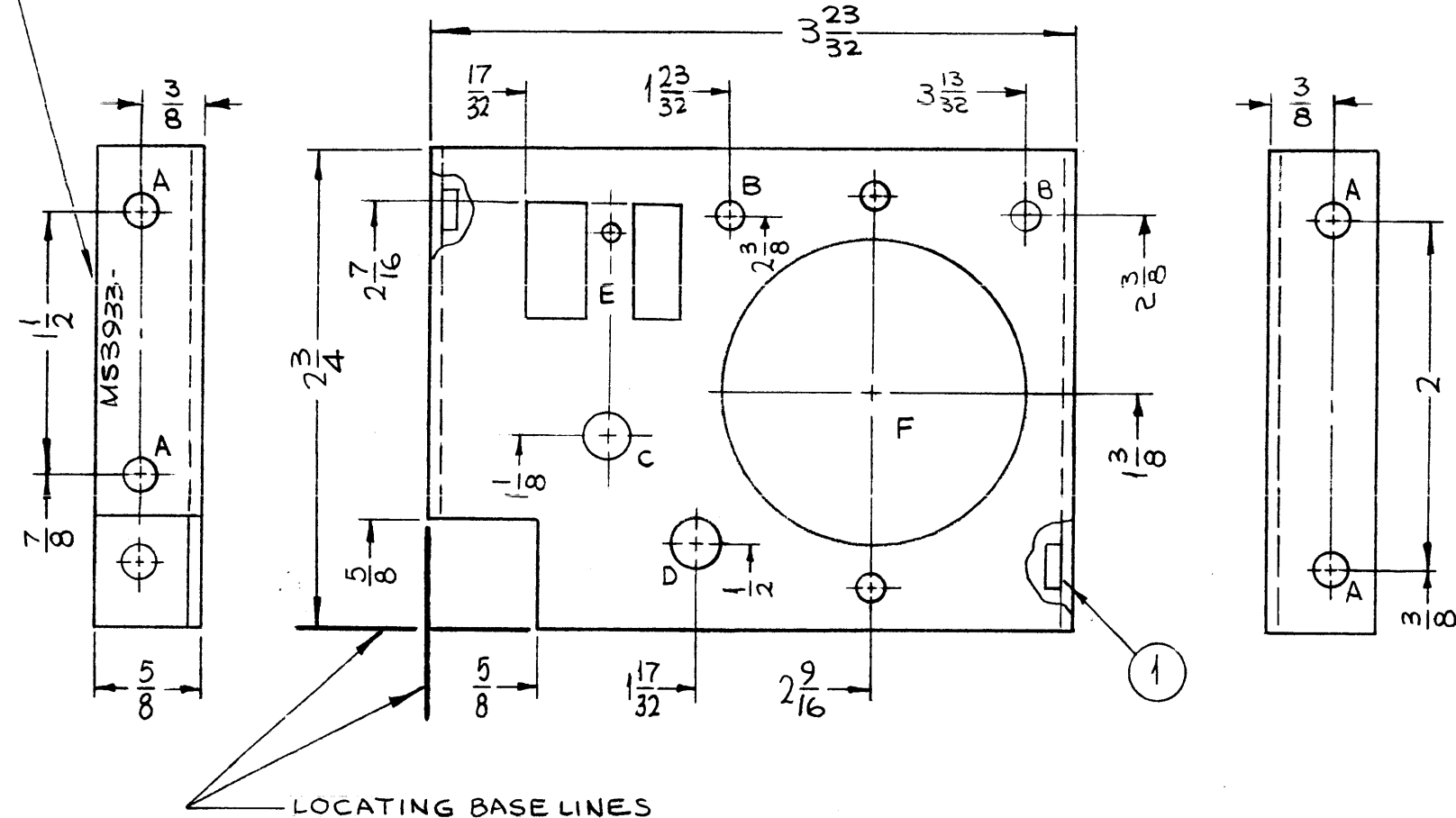


A
MS3933

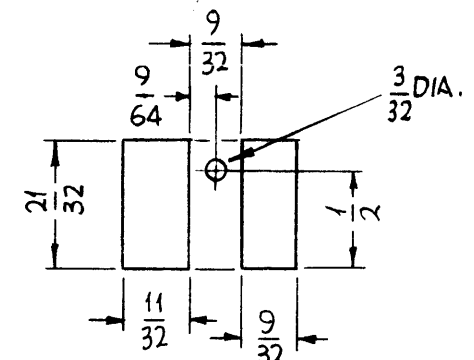
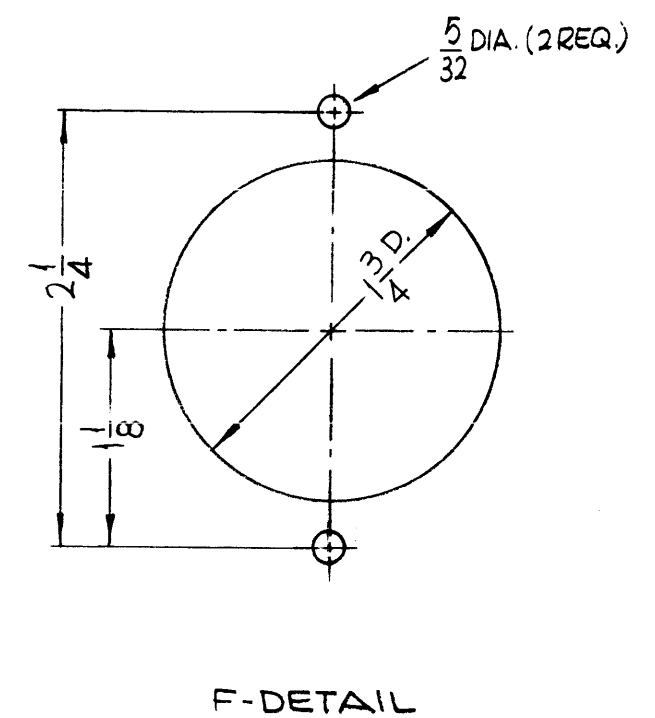
REVISIONS

SYM	DESCRIPTION	DATE	E.M.N. NO.	DRAFT	CHKD	APPD
X	EXPERIMENTAL RELEASE	8-18-64	X	SRG		
X ₁	1" C"-HOLE RELOC. TO BE CENTERED WITH DETAIL E	8-28-64	+	WB		
Ø	ORIGINAL RELEASE FOR PRODUCTION	8-31-64	Ø	JK		
Δ	(1) "B" HOLE ADDED	3-22-65	13609	ghen	JK	

METAL STAMP TMC PART NO. 1/8 HIGH GOTHIC W/LATEST REV. LETTER.



HOLE	DESCRIPTION	REQ.
A	.191-.194 DIA.	4
B	5/32 DIA.	2
C	17/64 DIA.	1
D	9/32 DIA.	1
E	SEE DETAIL	1
F	SEE DETAIL	1



REF: LD1575

4	1	NT129-632-4	NUT, ROUND, SWAGE TYPE	A
REQ'D.	ITEM	PART NUMBER	DESCRIPTION	SYMBOL

MATERIAL		THE TECHNICAL MATERIEL CORP.	
.081 THICK ALUMINUM 5052-H32		MAMARONECK, NEW YORK	
FINISH		TITLE	
S404 YELLOW IRIDITE		BRACKET, RELAY	
UNLESS OTHERWISE SPECIFIED DIMENSIONS ARE IN INCHES AND INCLUDE CHEMICALLY APPLIED OR PLATED FINISHES		DRAWN	DATE
		SRG	8-18-64
		CHECKED	DATE
		JK @	9-1-64
		ELECT. DES.	DATE
		MECH. DES.	DATE
		FINAL APPROVAL	
		DATE	
		MS3933	
		A	
		SHEET	
		REV. LTR.	

- UNLESS OTHERWISE SPECIFIED:
1. USE MATERIAL THICKNESS FOR MAXIMUM RADIUS ON ALL BENDS
 2. ALL ANGULAR BENDS 90 DEGREES
 3. REMOVE ALL BURRS AND SHARP EDGES
 4. MOUNT INSERTS AFTER FINISHING

NOTES

1	LFCA-1	
Q'TY./UNIT	MODEL USED ON	ASS'Y. NO.
!!!	A	
SCALE	CODE	

THE CONTENTS OF THIS DRAWING ARE THE EXCLUSIVE PROPERTY OF THE TECHNICAL MATERIEL CORP. ITS UNAUTHORIZED USE OR REPRODUCTION IN WHOLE OR IN PART IS STRICTLY FORBIDDEN.

DECIMALS	FRACTIONS
.X ± .05	± 1/64
.XX ± .01	ANGLES
.XXX ± .005	± 0° 30'