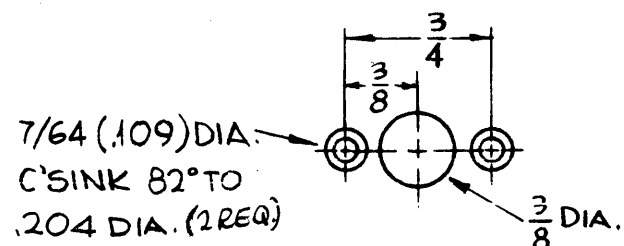


HOLE	DESCRIPTION	REQ.
A	.191-.194 DIA.	4
B	#27 DRILL (.144) C'SK 82° TO .284	6
C	1/4 DIA.	6
D	SEE DETAIL	4

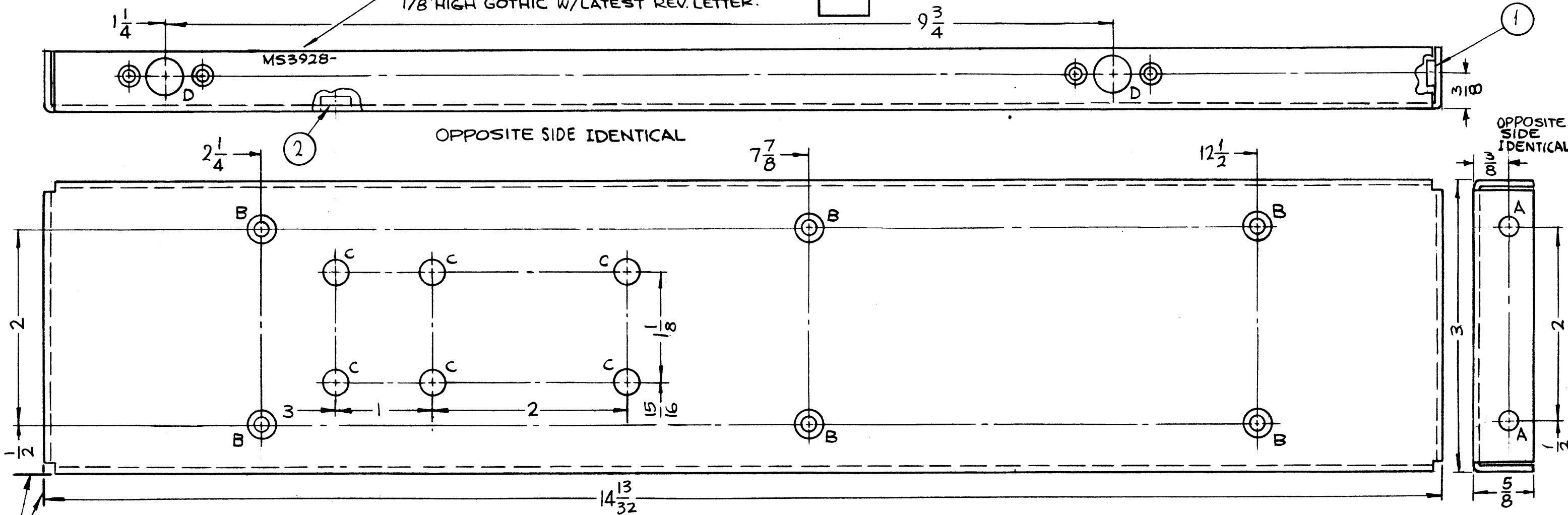


D-DETAIL

MS3928

REVISIONS					
SYM	DESCRIPTION	DATE	E.M.N. NO.	DRAFT	CHKD APPD
X	EXPERIMENTAL RELEASE	8-18-64	X	SRG	
X	DIMENSIONING METHOD CHANGED	8-28-64	X	JLB	
Ø	ORIGINAL RELEASE FOR PRODUCTION	8-31-64	Ø	JL	

METAL STAMP TMC PART NO. 1/8 HIGH GOTHIC W/LATEST REV. LETTER.



- UNLESS OTHERWISE SPECIFIED:
- USE MATERIAL THICKNESS FOR MAXIMUM RADIUS ON ALL BENDS
 - ALL ANGULAR BENDS 90 DEGREES
 - REMOVE ALL BURRS AND SHARP EDGES
 - MOUNT INSERTS AFTER FINISHING

NOTES

1	LFCA-1	
Q'TY./UNIT	MODEL USED ON	ASS'Y. NO.
SCALE 1:1	CODE A	

THE CONTENTS OF THIS DRAWING ARE THE EXCLUSIVE PROPERTY OF THE TECHNICAL MATERIEL CORP. ITS UNAUTHORIZED USE OR REPRODUCTION IN WHOLE OR IN PART IS STRICTLY FORBIDDEN.

REQ'D.	ITEM	PART NUMBER	DESCRIPTION	SYMBOL
6	2	NT129-1032-4	NUT, ROUND, SWAGE TYPE	C
4	1	NT129-632-4	NUT, ROUND, SWAGE TYPE	A

M. GELLMAN		LIST OF MATERIAL	
MATERIAL .081 THICK ALUMINUM 5052-H32		THE TECHNICAL MATERIEL CORP. MAMARONECK, NEW YORK	
FINISH S404 YELLOW IRIDITE		TITLE PLATE, RIGHT SIDE	
UNLESS OTHERWISE SPECIFIED DIMENSIONS ARE IN INCHES AND INCLUDE CHEMICALLY APPLIED OR PLATED FINISHES		DRAWN SRG	DATE 8-18-64
DECIMALS .X ± .05 .XX ± .01 .XXX ± .005		CHECKED @	DATE 9-1-64
FRACTIONS ± 1/64 ANGLES ± 0° 30'		ELECT. DES. MOC	DATE
TOLERANCES		MECH. DES.	DATE
		FINAL APPROVAL KOC	
		DATE	
		MS3928	
		Ø	
		SHEET	
		REV. LTR.	