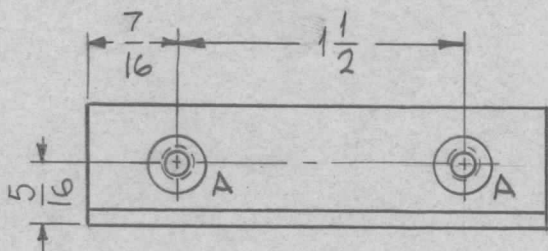
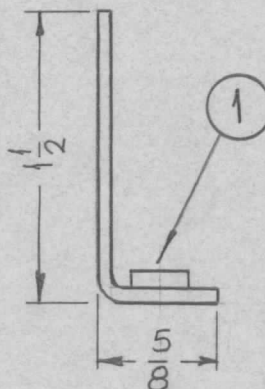
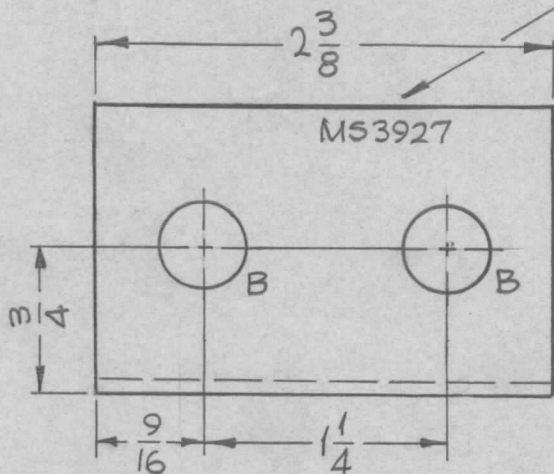


REQ. PER UNIT	USED ON			MS 3927 Ø
	MODEL	ASS'Y. NO.	DATE	
3	RAK-102		7-21-64	



METAL STAMP TMC
PART NO. 1/8 HIGH
GOTHIC W/LATEST REV.
LETTER.

HOLE	DESCRIPTION	REQ.
A	.191-.194 DIA.	2
B	7/16 DIA.	2



NOTES:

- 1~ USE MATERIAL THICKNESS FOR MAX. RADIUS ON BEND.
- 2~ ANGULAR BEND 90°
- 3~ REMOVE ALL BURRS & SHARP EDGES
- 4~ MOUNT INSERTS AFTER FINISHING.

						2	1	NT 129-632-4	NUT, ROUND, SWAGE TYPE	A
						REQ. ITEM		PART NO.	EATON DESCRIPTION	SYMBOL
								.081 THICK STOCK SIZE	THE TECHNICAL MATERIEL CORP. MAMARONECK, NEW YORK	
Ø	ORIGINAL RELEASE	8-25-64	+	WJB				ALUMINUM	BRACKET, FILTER MTG.	
X	EXPERIMENTAL RELEASE	7-21-64	0	SRG	RG					
SYM	DESCRIPTION	DATE	CH. NO.	DRAFTS	CHECKER	ENG. APP.	MATERIAL			
UNLESS OTHERWISE SPECIFIED DIMENSIONS ARE IN INCHES AND INCLUDE CHEMICALLY APPLIED OR PLATED FINISHES		SCALE 1:1						5052-H32	SRG	TRG RAC
DECIMALS .X ± .05 .XX ± .01 .XXX ± .005	TOLERANCES	FRACTIONS ± 1/64 ANGLES ± 0° 30'	CODE A					TYPE & TEMPER 5404 YELLOW IRIDITE	HEAT TREAT. SPEC. JEE 7/31/64	DRAWN CHECKED FINAL APPROVAL
						FINISH & SPEC. NO.		ELEC. DES. APP.	MECH. DES. APP.	MS 3927 Ø