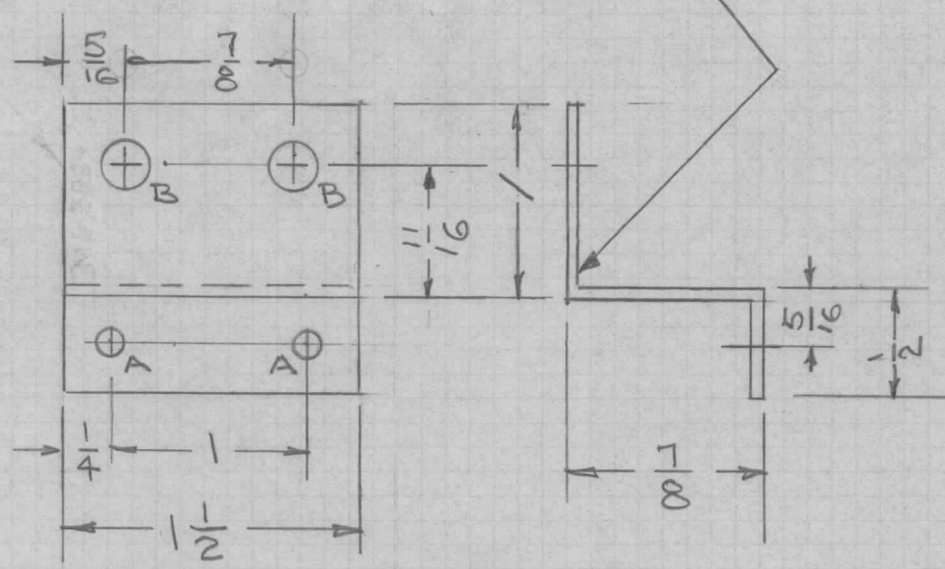


REQ. PER UNIT	USED ON			MS 3924	A
	MODEL	ASS'Y. NO.	DATE		
1	STR-1A		7-23-64		

METAL STAMP TMC PART NO. 1/8  
HIGH GOTHIC WITH LATEST REV. LETTER



A - 5/32 DIA 2 REQ.  
B - 1/4 DIA 2 REQ

UNLESS OTHERWISE SPECIFIED:

1. USE MATERIAL THICKNESS FOR MAXIMUM RADIUS ON ALL BENDS.
2. ALL ANGULAR BENDS 90°.
3. REMOVE ALL BURRS AND SHARP EDGES.

REF: LD 1566

REQ. ITEM	PART NO.	DESCRIPTION		SYMBOL						
1A	RELOC P/N STAMP	12.13.66	17470 RME	THE TECHNICAL MATERIEL CORP. MAMARONECK, NEW YORK						
Ø	ORIGINAL RELEASE FOR PRODUCTION	9.24.64	Ø 9L							
X	EXPERIMENTAL RELEASE	7/24/64								
SYM	DESCRIPTION	DATE	CH. NO.	DRAFTS	CHECKER	ENG. APP.	MATERIAL	BKT, MTG, POTENTIOMETER		
UNLESS OTHERWISE SPECIFIED DIMENSIONS ARE IN INCHES AND INCLUDE CHEMICALLY APPLIED OR PLATED FINISHES		SCALE	4		5052 H32		II	Re	BT@	KTC
DECIMALS .X ± .05 .XX ± .01 .XXX ± .005		FRACTIONS ± 1/64 ANGLES ± 0° 30'		TOLERANCES		CODE	S404 YELLOW IRIDITE	THW		
						FINISH & SPEC. NO.	ELEC. DES. APP.	MECH. DES. APP.	MS3924 A	