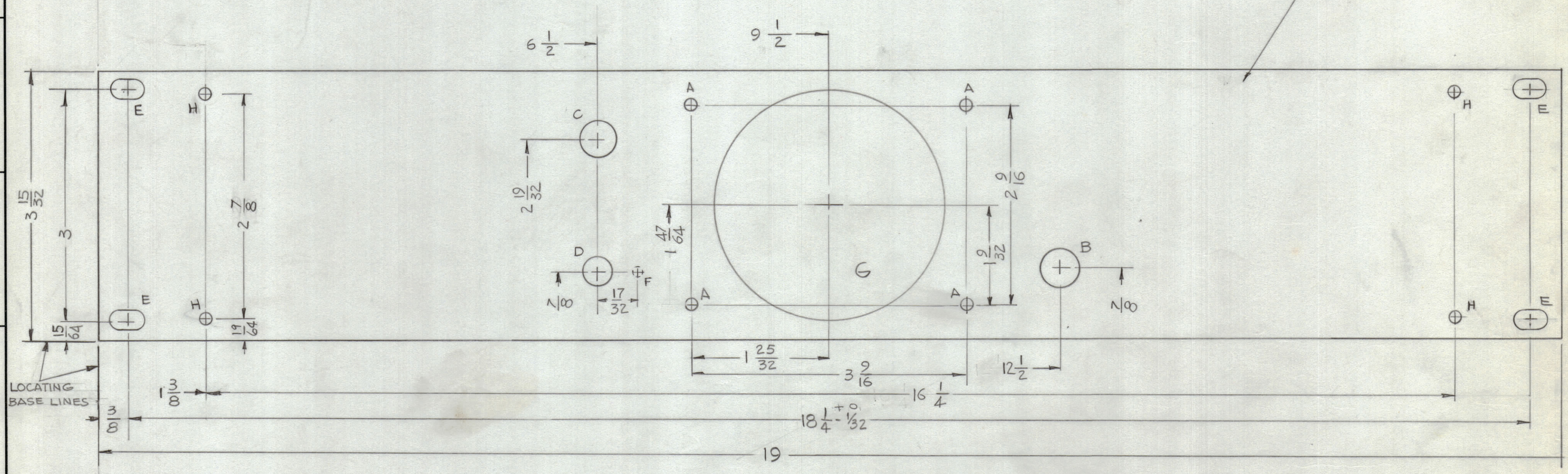


REVISIONS

ZONE	SYM	DESCRIPTION	DATE	E.M.N. NO.	DRAFT	CHKD	APPD
+	X	EXP. RELEASE	7-1-64	#	A.M.		
+	X1	"B" HOLE RELOCATED DIA. WAS 5/16	8-31-64	+	G.D.L.		
0		ORIGINAL RELEASE FOR PRODUCTION	12-18-64	0	R.F.		

HOLE	DESCRIPTION	REQ.
A	5/32 DIA.	4
B	1/2 DIA.	1
C	15/32 DIA.	1
D	25/64 DIA.	1
E	1/4 DIA. X 29/64 SLOT	4
F	1/8 DIA. X 1/8 DEEP ON REAR OF PANEL	1
G	3 DIA.	1
H	13/64 DIA.	4

METAL STAMP TMC PART NO. 1/8 HIGH GOTHIC ON REAR OF PANEL WITH LATEST REVISION LETTER



MS 3882

MACHINING:

1. MILL ALL EDGES.
2. HOLES MUST BE DRILLED, UNLESS OTHERWISE SPECIFIED.
3. LATERAL BOW OF PANEL MUST BE KEPT TO .031 TOLERANCE.
4. PANEL MUST BE FREE OF ALL MACHINING MARKS, GOUGES AND SCRATCHES. IF NECESSARY, SAND FRONT OF PANEL WITH NO. 120 GRIT SANDPAPER.

FINISH NOTES:

1. S404 - IRIDITE 14-2 AL-COAT.
2. S114 - ZINC CHROMATE PRIMER) FRONT AND
3. S115 - SMOOTH GRAY ENAMEL) EDGES ONLY

REF: LD1564

REQ'D.	ITEM	PART NUMBER	DESCRIPTION	SYMBOL
	R-HAY		LIST OF MATERIAL	
MATERIAL	3/16 THK ALUMINUM 2024-T3		THE TECHNICAL MATERIEL CORP. MAMARONECK, NEW YORK	
FINISH	SEE NOTE		TITLE PANEL, FRONT	
UNLESS OTHERWISE SPECIFIED DIMENSIONS ARE IN INCHES AND INCLUDE CHEMICALLY APPLIED OR PLATED FINISHES	DRAWN MARINO	DATE 7-1-64	FINAL APPROVAL RAC	DATE 12-18-64
DECIMALS .X ± .05 .XX ± .01 .XXX ± .005	TOLERANCES	FRACTIONS ± 1/64 ANGLES ± 0° 30'	ELECT. DES. MECH. DES.	DATE 12/18/64 SHEET
THE CONTENTS OF THIS DRAWING ARE THE EXCLUSIVE PROPERTY OF THE TECHNICAL MATERIEL CORP. ITS UNAUTHORIZED USE OR REPRODUCTION IN WHOLE OR IN PART IS STRICTLY FORBIDDEN.		MS3882		

NOTES

Q'TY./UNIT	MODEL USED ON	ASS'Y. NO.
SCALE 1:1	CODE A	