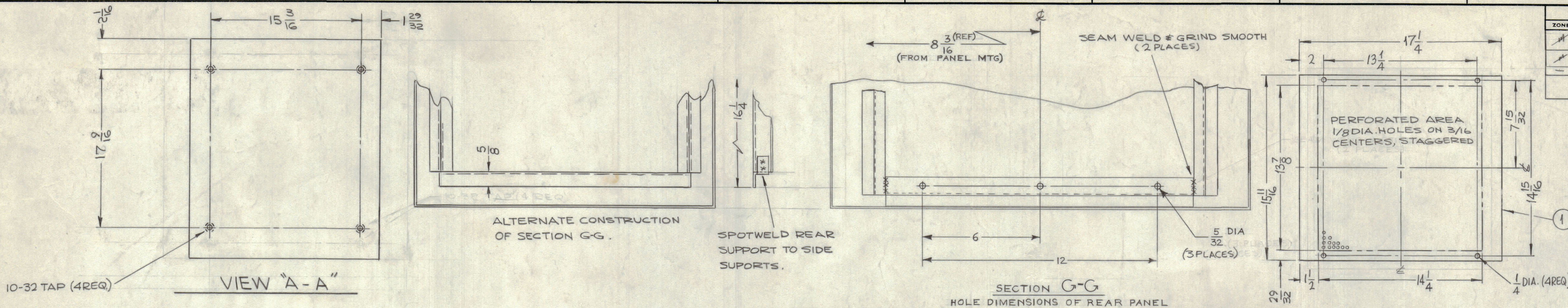
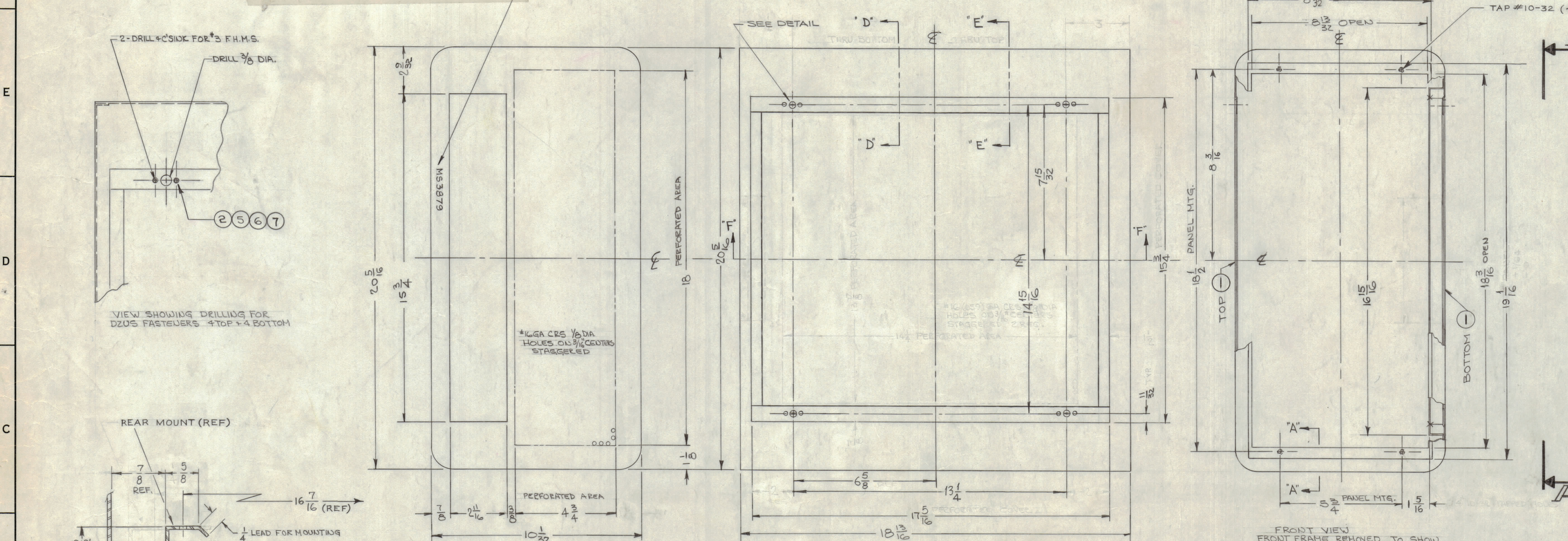


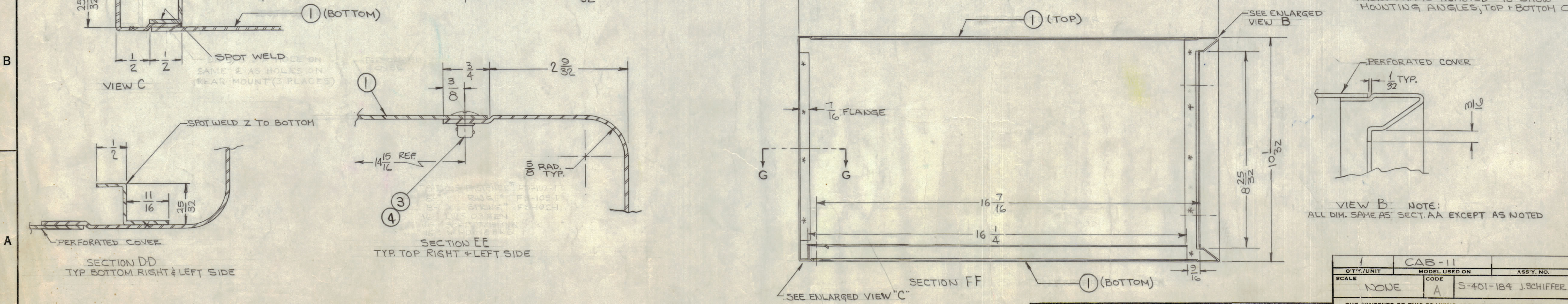
		REVISIONS					
ZONE	SYM	DESCRIPTION	DATE	EM.N. NO.	DRAFT	CHKD	APPD
X1		REAR MTG & SIDE MTGS EXTENDED HOLES ON REAR MTG, ADDED	8-10-64	X1	NP		
X2		ITEMS (1) THRU (7), AND VIEW "A-A" ADDED CALLOUTS & PICTORIAL UPDATED	8-18-64	X2	SRG		
		ORIGINAL RELEASE FOR PRODUCTION	8-18-64	O	SRG		
A		COVER & ALT CONSTRUCTION DETAILS ADDED, REAR MOUNT DETAIL REV DIM 19 1/16 WAS 19 1/32, 18 3/16 WAS 18 1/8, 25 1/8 WAS 25 3/16, 25 1/16 WAS 25 1/8, 17 9/16 WAS 16 9/16, 25 3/16 WAS 24 1/4	9-18-64	12365	SRG		



METAL STAMP TMC PART NO. 1/8 HIGH GOTHIC, WITH LATEST REVISION LETTER



- NOTES
- SEAM WELD AND GRIND SMOOTH WHERE REQUIRED.
  - SPOT WELD ALL JOINING PARTS SECURELY.
  - USE MATERIAL THICKNESS FOR MAX. RADIUS ON ALL BENDS UNLESS OTHERWISE NOTED.
  - ALL ANGULAR BENDS 90° UNLESS NOTED.
  - REMOVE ALL BURS AND SHARP EDGES.
  - FINISH: 5520-BLUE-GRAY TEXTURED VINYL PAINT, OR CUSTOMER SPECIFICATIONS TO BE SUPPLIED BY MANUFACTURER.



REQ'D.	ITEM	PART NUMBER	DESCRIPTION	SYMBOL
16	7	NTH0348BG	NUT, HEX.	
16	6	LW303MRN	WASHER, LOCK	
16	5	SCFP0348BG	SCREW, MACHINE	
B	4	FS110-1	STUD, SLOTTED HEAD	
B	3	FS109-1	RING, STUD RETAINING	
B	2	FS102-1	SPRING, TYPE "S"	
X	1	SEE NOTE #7	COVER, TOP & BOTTOM	

GELLMAN LIST OF MATERIAL		THE TECHNICAL MATERIEL CORP.	
MATERIAL #16 (059) GA CRS 4AS NOTED		MAMARONECK, NEW YORK	
FINISH	TITLE	DATE	FINAL APPROVAL
AS NOTED	CABINET, GPR-92	2-17-64	KRC
UNLESS OTHERWISE SPECIFIED DIMENSIONS ARE IN INCHES AND INCLUDE CHEMICALLY APPLIED OR PLATED FINISHES		DATE	DATE
DECIMALS ± .05	FRACTIONS ± 1/64	DATE	DATE
ANGLES ± .05	ANGLES ± .01	DATE	DATE

QTY./UNIT	MODEL USED ON	ASSY. NO.
SCALE	CODE	S-401-184 J.SCHIFFER
1	A	

NOTES

MS3879 A